

# 15<sup>th</sup> Annual RANCHER'S BULL SALE

SELLING ANGUS & SIMMENTAL BULLS

smartauctions

Bid In-Person or Online at  
WWW.SMARTAUCTIONS.AUCTION  
Bidding Hotline: 1.866.419.6279

**SUN. FEBRUARY 22**  
**ALBION, NEBRASKA**

Boone Co. Fairgrounds • Bids Close at 5 p.m. CST



**2026 NATIONAL WESTERN STOCK SHOW GRAND CHAMPION CARLOAD OF ANGUS BULLS - THEY ALL SELL!**

**CIRCLE B CONGRESS N25**  
AAA: 21401509  
Elite trait stock and visual quality



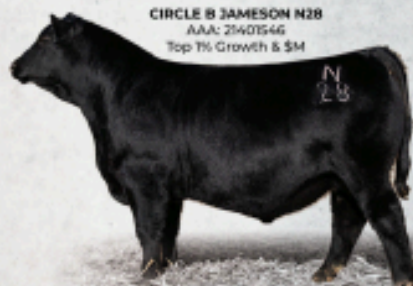
**CIRCLE B JAMESON N29**  
AAA: 21401675  
Unique CE to growth +  
Top 1% SW and SM



**CIRCLE B TRUE BALANCE N36**  
AAA: 21401628  
Calving ease star



**CIRCLE B JAMESON N28**  
AAA: 21401546  
Top 1% Growth & SM



**CIRCLE B DYNAMIC N3**  
AAA: 21414450  
Stacked CE (Top 1%) & Top 20% Growth -  
Stellar build



**CIRCLE B PACIFIC N13**  
AAA: 21358034  
Real balance



**MARK AND ALISCIA  
BENES FAMILY**

2276 HWY 14 - ALBION, NEBRASKA  
Mark: 402/741-0380 • Aliscia: 308/539-6199  
Braden: 402/608-0577 • Brant: 402/608-0353  
circleblivestockllc@gmail.com





## Lot 1      Circle B Dynamic N3

Purebred Angus

AAA: [21414450](#)

DOB: 2/4//25

BW: 74

Adj WW: 778

Current Weight: 1340

SC: 39 cm



One of the very best ever produced here, this is a stat-stuffing, all-around herd builder from a wonderful cow that has delivered nothing but hits from all natural calves including a beautiful full sister to this bull

plus another good one just delivered; she is a massive, docile cow with a great udder. This bull stacks 11 traits in the top third of the Angus population featuring Top 1% ranks for CED, BW, and CEM that he balances with Top 20% growth. He is a wide, flexible, massive individual with handsome good looks and easy movement. A true, blue heifer bull with all sorts of extras and the lead-off bull from our 2026 National Western Champion Angus Carload!

CED	BW	WW	YW	YH	SC	HP	Teat	UDDR	MH
+17	-3.3	+82	+142	+.2	+1.02	+10.7	+.82	+.70	+.1
1%	1%	20%	20%	85%	45%	70%	10%	15%	80%

DOC	PAP	MARB	RE	\$M	\$F	\$W	\$G	\$B	\$C
+14	+3.51	+.72	+.60	+75	+79	+93	+52	+132	+246
75%	95%	55%	65%	30%	80%	5%	55%	75%	70%

## Lot 2 Circle B Jameson N28

Purebred Angus

AAA: [21401546](#)

DOB: 2/15//25

BW: 84

Adj WW: 664

Current Weight: 1320

SC: 42 cm



A power tank with huge growth that ranks in the top 1% of the breed for weaning and top 3% for yearling weight, if you sell your calves by the pound and need to keep females

then this is definitely a premium option for you! Not just a one-hit wonder for growth, however, N28 posts 17 different EPD in the top 25% of the Angus breed and is backed by a beautiful Pacific daughter that is striking from every angle. He blends performance with eye appeal, structural correctness, and added body dimension while ranking near the top of the entire crop for SC. Big topped, square hipped, and built with longevity in mind, this is the kind of power bull that can move the needle in any progressive cow herd while still keeping the kind of phenotype that works in real-world production.

CED	BW	WW	YW	YH	SC	HP	Teat	UDDR	MH
+9	+2.0	+100	+164	+.8	+1.12	+10.6	+.79	+.68	+.8
30%	70%	1%	3%	25%	35%	70%	10%	20%	20%

DOC	PAP	MARB	RE	\$M	\$F	\$W	\$G	\$B	\$C
+29	+.74	+1.32	+.90	+93	+101	+97	+192	+192	+342
10%	45%	15%	30%	10%	40%	3%	15%	15%	10%

## Lot 3 Circle B Pacific N13

Purebred Angus

AAA: [21398094](#)

DOB: 2/14//25

BW: 92

Adj WW: 690

Current Weight: 1320

SC: 39.5 cm

The second stud in a row from the G021 cow that also had our high seller in 2025, this is a powerhouse member of our National Western Champion Carload.



The judges and crowd loved his true muscle and size and his balanced-trait package that stacks 12 different traits among the best 25% of the Angus population. This is a powerful, maternally built bull - his mother has a gorgeous udder and this bull is wonderfully correct - that offers balance, fertility, and longevity; one you'll want to keep every daughter out of for years to come!

CED	BW	WW	YW	YH	SC	HP	Teat	UDDR	MH
+6	+4	+65	+119	+7	+1.07	+10.1	+76	+81	+8
55%	30%	60%	55%	35%	40%	70%	15%	4%	20%

DOC	PAP	MARB	RE	\$M	\$F	\$W	\$G	\$B	\$C
+14	+1.75	+1.00	+68	+93	+127	+67	+68	+195	+319
75%	65%	30%	55%	50%	10%	50%	30%	15%	15%



## Lot 4 Circle B Jonesboro N12

Purebred Angus

AAA: [21428032](#)

DOB: 2/10//25

BW: 86

Adj WW: 784

Current Weight: 1420

SC: 42.5 cm



The heaviest of the bulls with the largest scrotal, this is another powerfully-maternal son of the great D14 cow - she is a real beauty - that has been behind several of our recent best

include two previous sale leaders. This is another Denver favorite for his size, power, and masculine build. He offers a Top 1% SC EPD with stout growth data and real-world cow power. A moderate, efficient, stout-made, huge-middled Jonesboro son, the kind that doesn't come around very often.

CED	BW	WW	YW	YH	SC	HP	Teat	UDDR	MH
+4	+1.6	+73	+131	+3	+2.57	+10.5	+42	+36	+2
70%	60%	40%	35%	75%	1%	70%	80%	90%	75%

DOC	PAP	MARB	RE	\$M	\$F	\$W	\$G	\$B	\$C
+13	+.94	+.45	+.70	+65	+93	+75	+42	+136	+241
80%	45%	80%	50%	55%	55%	30%	75%	75%	75%

## Lot 5 Circle B Jameson N29

Purebred Angus

AAA: [21401675](#)

DOB: 2/15//25

BW: 78

Adj WW: 742

Current Weight:

1300

SC: 40 cm



A unique find and all-around beef business bull for the progressive breeder! This is a calving ease Jameson son - a hard-to-find commodity in

itself - with strong tabulations across the board featuring Top 1% \$M and \$W, Top 10% WEPD, Top 25% YEPD, and Top 15% \$C among 14 different EPD among the best quarter of the Angus breed. Beyond that, he is a husky powerhouse with worlds of shape and dimension including a huge middle and especially stout hip plus a very gentle disposition and our seconds best mark for scrotal. A real favorite that can do it all!

CED	BW	WW	YW	YH	SC	HP	Teat	UDDR	MH
+13	-.9	+90	+138	+.5	+.54	+13.2	+.62	+.60	+.2
10%	15%	10%	25%	55%	75%	30%	35%	35%	75%

DOC	PAP	MARB	RE	\$M	\$F	\$W	\$G	\$B	\$C
+21	-.07	+1.11	+.49	+119	+87	+111	+70	+158	+324
45%	25%	20%	80%	1%	65%	1%	25%	45%	15%

## Lot 6 Circle B Pacific N35

Purebred Angus

AAA: [21403732](#)

DOB: 2/20//25

BW: 84

Adj WW: 742

Current Weight:

1230

SC: 38 cm



A powerful cow maker from a winning show heifer, this is a perfect structured, square-hipped, huge-bellied bull with loads of back and body.

His Top 2% SC EPD shows and he offers a very balanced calving to growth data set. Keep every female from him and sell his steers high!

CED	BW	WW	YW	YH	SC	HP	Teat	UDDR	MH
+9	+8	+72	+120	+3	+2.17	+9.5	+.57	+.58	+.1
30%	40%	40%	55%	75%	2%	85%	50%	40%	80%

DOC	PAP	MARB	RE	\$M	\$F	\$W	\$G	\$B	\$C
+8	-1.01	+.49	+.43	+60	+95	+67	+40	+135	+235
95%	15%	75%	85%	65%	50%	50%	80%	75%	80%



## Lot 7 Circle B Congress N25

Purebred Angus

AAA: [21401509](#)

DOB: 2/14//25

BW: 80

Adj WW: 598

Current Weight:

1180

SC: 39 cm

For extra pounds and improved end product, this is a wise selection. He boasts a Top 5% WEPD and Top 15% YEPD



with agreeable calving ease and Top 1% \$W plus a Top 20% \$C figure. In addition, he is a balanced, correct, attractive bull from a favorite, young cow. In total, he stacks 15 traits in the best 25% of the Angus herd book.

CED	BW	WW	YW	YH	SC	HP	Teat	UDDR	MH
+7	+1.0	+91	+147	+9	+1.21	+11.9	+52	+54	+5
45%	45%	5%	15%	15%	30%	50%	60%	50%	45%

DOC	PAP	MARB	RE	\$M	\$F	\$W	\$G	\$B	\$C
+14	-.57	+9	+1.08	+92	+102	+108	+71	+173	+316
75%	20%	35%	15%	10%	35%	1%	25%	30%	20%



## Lot 8 Circle B Summation N40

Purebred Angus

AAA: [21420597](#)

DOB: 2/25//25

BW: 74

Adj WW: 552

Current Weight:

1220

SC: 40 cm



A true cow bull with a massive ribeye, big carcass weight, added mature height, and big mature size, backed by 13

EPDs ranking in the top 25% of the breed. He is long bodied, big hipped, and big stifled, offering extra scale and power in a rugged, functional package. He charts in the top 5% of the breed for \$F, top 20% for \$B, and posts a +1.1 Yearling Height, making him a growth-and-yield specialist built to add pounds and carcass value to mature cow herds.

CED	BW	WW	YW	YH	SC	HP	Teat	UDDR	MH
+1	+3.2	+80	+145	+1.1	+88	+10.8	+67	+61	+1.1
90%	90%	20%	15%	10%	55%	65%	30%	35%	10%

DOC	PAP	MARB	RE	\$M	\$F	\$W	\$G	\$B	\$C
+2	+73	+42	+1.39	+36	+130	+70	+53	+184	+275
95%	45%	85%	2%	95%	5%	40%	55%	20%	45%

## Lot 9 Circle B Congress N31

Purebred Angus

AAA: [21405336](#)

DOB: 2/18//25

BW: 92

Adj WW: 678

Current Weight:

1260

SC: 37 cm

Another  
Congress son  
out of our  
Black Rose  
donor who was  
Reserve  
Champion  
Breeding  
Heifer at the  
Nebraska State



Fair in 2015. Black Rose hits it out of the park every year; she stays fat year round and always breeds up early. This Congress son has the extra neck extension and size combined with a PAP EPD in the top 4%, and an \$EN that is in check

CED	BW	WW	YW	YH	SC	HP	Teat	UDDR	MH
+0	+2.1	+68	+110	+.7	-.01	+10.0	+.62	+.64	+.2
90%	70%	55%	70%	35%	95%	80%	35%	30%	75%

DOC	PAP	MARB	RE	\$M	\$F	\$W	\$G	\$B	\$C
+14	-1.81	+.85	+.51	+70	+75	+70	+62	+137	+248
75%	5%	40%	75%	45%	90%	40%	35%	70%	70%



## Lot 10      Circle B Dynamic N33

Purebred Angus

AAA: [21414525](#)

DOB: 2/20//25

BW: 76

Adj WW: 668

Current Weight: 1130

SC: 38.5 cm

Deluxe heifer bull! This is another Denver favorite and for many good reasons. He is a good looker with balance and great structure plus he reads like a real beef bull. He



offers 16 traits in the Top 25% of Angus bulls including all calving to yearling EPD among the best 20% plus his daughters will be bigger framed yet calve easier than the average by a good margin. His remarkable 12-year-young dam settles AI each year and just laid down and had a set of twin Pacific heifers plus his maternal sister shown here is a looker as well. Load him!

CED	BW	WW	YW	YH	SC	HP	Teat	UDDR	MH
+11	+.1	+88	+144	+.8	+.50	+14.2	+.72	+.72	+1.0
15%	25%	10%	20%	2%	75%	15%	20%	15%	10%

DOC	PAP	MARB	RE	\$M	\$F	\$W	\$G	\$B	\$C
+12	+.04	+1.00	+.53	+68	+113	+91	+65	+178	+299
85%	30%	30%	75%	50%	20%	10%	35%	25%	25%

## Lot 11      Circle B True Balance N36

Purebred Angus

AAA: [21401628](#)

DOB: 2/20//25

BW: 82

Adj WW: 570

Current Weight:

1170

SC: 38 cm



Sleep all night  
with this heifer  
specialist and  
Denver

Champion! His  
Top 10% CED  
and BW plus  
Top 5% CEM  
and Top 2%

Udder combine

to make him a maternal specialist with as Top 15% \$M ranking. He is the first  
bull calf from a consistent dam.

CED	BW	WW	YW	YH	SC	HP	Teat	UDDR	MH
+13	-1.5	+57	+102	+.1	+.86	+11.3	+.76	+.90	-.1
10%	10%	80%	80%	90%	55%	60%	15%	2%	90%

DOC	PAP	MARB	RE	\$M	\$F	\$W	\$G	\$B	\$C
+17	-.80	+1.37	+.39	+86	+94	+61	+82	+176	+314
65%	15%	10%	85%	15%	55%	60%	15%	25%	20%



## Lot 12      CBLN Upside N37

Purebred

Simmental

ASA: [4650158](#)

DOB: 2/24/25

BW: 76

Adj WW: 556

Current Weight:

1170

SC: 40 cm



The first Simmental in the lineup, this is the second stud in a row from the E45 cow. She had a \$17,000

to-selling red

baldie a year ago and this year's version is a proud and thick black baldy with size and substance. His dam is a beautiful cow and hard to fault in production.

CE	BW	WW	YW	ADG	MWW	STAY	DOC
+12.4	+0.0	+66.9	+105.9	+.24	+56.1	+19.3	+10.1
25%	30%	95%	80%	60%	85%	15%	75%

CW	YG	MARB	BF	REA	API	TI
+25.1	-.37	+.2	-0.074	+.8	+139.8	+74.6
80%	45%	50%	40%	70%	40%	75%

## Lot 13      CBLN Upload N42

¾ Simmental 1/4

Angus

ASA: [4631849](#)

DOB: 2/28/25

BW: 92

Adj WW: 530

Current Weight:

1160

SC: 37 cm



A

good-looking,  
black baldy  
with  
tremendous  
bone and XXL  
pants, this guy  
looks like he  
will create  
some real

premiums! He offers excellent carcass traits and lots of extra value from a white-faced dam that everyone loves.

CE	BW	WW	YW	ADG	MWW	STAY	DOC
+8.8	+1.3	+71.6	+107.5	+.22	+52.5	+12.4	+9.7
80%	75%	75%	80%	85%	95%	75%	85%

CW	YG	MARB	BF	REA	API	TI
+31.5	-.35	+.19	-0.059	+.92	+108.7	+70.9
70%	10%	85%	25%	15%	85%	90%



## Lot 14      CBL Up Road N34

¾ Simmental ¼

Angus

ASA: [4631848](#)

DOB: 2/20/25

BW: 88

Adj WW: 680

Current Weight:

1230

SC: 35 cm

A

heavyweight  
Simmental  
with all types  
of grit and  
guts, this  
bull is by  
Roadgrader,  
one of our  
favorite



Simmental sires for extra pounds and muscle and his dam has been a herd bull factory. Like we expected, he offers loads of back, butt, and body. Use him to shape up a set of heavier feeders and make some stout replacements!

CE	BW	WW	YW	ADG	MWW	STAY	DOC
+9.3	+1.5	+67.6	+98.9	+.2	+54.0	+12.2	+9.3
75%	80%	85%	90%	90%	90%	80%	90%

CW	YG	MARB	BF	REA	API	TI
+29.2	-.35	+0.04	-0.078	+.74	+98.2	+64.7
80%	10%	99%	10%	40%	95%	99%

## Lot 15      CBLN Loaded N Rollin N54

¾ Simmental 1/4 Angus

ASA: [4631850](#)

DOB: 3/17/25

BW: 90

Adj WW: 535

Current Weight: 1120

SC: 38.5 cm



Another  
super-stout baldy!  
This bull ranks  
near the top of the  
Simmental for all  
traits and he will  
be one of our  
heaviest at sale  
time. Super wide,  
thick, and hairy -  
all sorts of rugged!

CE	BW	WW	YW	ADG	MWW	STAY	DOC
+9.6	+1.2	+72.8	+112.2	+.25	+55.6	+14.0	+12.5
70%	75%	70%	70%	70%	85%	65%	55%

CW	YG	MARB	BF	REA	API	TI
+36.7	-.38	+.16	-0.063	+1.05	+112.8	+71.8
55%	5%	90%	15%	10%	85%	85%

## Lot 16      Circle B Congress N9

Purebred Angus

AAA: [21401504](#)

DOB: 2/9//25

BW: 90

Adj WW: 605

Current Weight:

1220

SC: 39 cm



Balanced calving and growth from Couch Congress and a reliable dam, this is one of the biggest framed and heaviest bulls in the crop and he

will impress you. His body depth and total capacity make him a quick favorite of many and his foot quality and disposition are excellent as well.

CED	BW	WW	YW	YH	SC	HP	Teat	UDDR	MH
+9	+1.7	+75	+128	+.4	+.92	+9.9	+.44	+.37	+.3
30%	60%	35%	40%	65%	50%	80%	75%	90%	65%

DOC	PAP	MARB	RE	\$M	\$F	\$W	\$G	\$B	\$C
+19	-1.05	+.91	+.61	+68	+92	+70	+64	+156	+270
55%	15%	35%	65%	50%	55%	40%	35%	50%	50%



## Lot 17      Circle B Congress N39

Purebred Angus

AAA: [21401503](#)

DOB: 2/24//25

BW: 80

Adj WW: 635

Current Weight:

1220

SC: 39 cm

All sorts of growth and performance with very agreeable calving ease, this is a beef business bull from a gorgeous dam.



This bull is

super complete and docile with extra size and Top 15% WEPD, Top 20% YEPD, Top 15% Foot scores and a calving number among the breed's best third. Buy with confidence.

CED	BW	WW	YW	YH	SC	HP	Teat	UDDR	MH
+9	+1.2	+84	+143	+.8	+.75	+11.9	+.39	+.53	+.6
30%	50%	15%	20%	25%	60%	50%	85%	55%	35%

DOC	PAP	MARB	RE	\$M	\$F	\$W	\$G	\$B	\$C
+27	-1.87	+.83	+.56	+82	+103	+86	+62	+165	+296
15%	4%	40%	70%	20%	35%	15%	35%	40%	30%

## Lot 18      Circle B Congress N43

Purebred Angus

AAA: [21401644](#)

DOB: 2/28//25

BW: 84

Adj WW: 525

Current Weight:

1120

SC: 35.5 cm



Assured calving ease and maternal strength! He is out of an 11-year-old dam that has been so good to us and has placed several sons in

previous sales. This bull is great on his feet and legs with the most muscle and shape of any of her sons!

CED	BW	WW	YW	YH	SC	HP	Teat	UDDR	MH
+10	+.4	+60	+109	+.3	-.17	+7.8	+.73	+.79	+.4
20%	30%	75%	70%	75%	95%	95%	20%	10%	55%

DOC	PAP	MARB	RE	\$M	\$F	\$W	\$G	\$B	\$C
+14	-1.67	+1.32	+1.13	+57	+113	+58	+91	+205	+323
75%	10%	15%	10%	75%	20%	65%	10%	10%	15%

## Lot 19      Circle B Moke N52

Purebred Angus

AAA: [21398097](#)

DOB: 3/18//25

BW: 88

Adj WW: 505

Current Weight: 1090

SC: 37 cm

The second-youngest Angus bull to make the cut, this bull will be ready to go when it matters, and he brings plenty of length and thickness to the table. He offers a balanced trait portfolio.



CED	BW	WW	YW	YH	SC	HP	Teat	UDDR	MH
+3	+2.3	+69	+120	+.6	+.57	+8.0	+.41	+.43	+.8
75%	75%	50%	55%	45%	75%	95%	80%	80%	20%

DOC	PAP	MARB	RE	\$M	\$F	\$W	\$G	\$B	\$C
+8	+.44	+.45	+.95	+44	+107	+69	+49	+156	+246
95%	35%	80%	25%	95%	30%	45%	60%	50%	70%



**Lot 20      Circle B 500 N47**

## Purebred Angus

AAA: 21506433

DOB: 4/3//25

BW: 66

Adj WW: 510

Current Weight: 990

SC: 37 cm

Calving ease and more! This is an April bull by Colossal 500 and a big bodied dam that is filled with performance.

[illegible][illegible]

## **Lot 21      Circle B Moke N51**

Angus X

DOB: 3/7/25

BW: 88

Adj WW: 592

Current Weight:

1160

SC: 35.5 cm

The Simmental in this bull is too low to register but he is a big, stout yearling with plenty of pounds to offer. He is especially deep ribbed, efficient, and built on great feet.



## **Lot 22      Circle B Summation N27**

Angus X

DOB: 2/4/25

BW: 64

Adj WW: 570

Current Weight:

1100

SC: 39.5 cm

Another good bull with too little breed percentage to register, this bull recorded the lowest actual BW in the crop. He sure looks heifer-safe and has excellent feet and legs with an attractive profile.



His young dam was Reserve Champion MaineTainer Female at the Nebraska State Fair.

## Lot 23      CBL Vulcan N67

¾ Simmental ½ Red Angus ¼

Angus

ASA: 4648802

DOB: 5/29/25

BW: 82

Adj WW: N/A

Current Weight: 800

SC: 32 cm



The youngest calf in the crop but still good enough to get to work with, this is a flashy red-baldy that is super stout and good looking! If you like to calve a little later, you will give a little and get a lot here!

CE	BW	WW	YW	ADG	MWW	STAY	DOC
+10.7	-0.2	+64.5	+101.6	+.23	+69.7	+15.3	+12.7
60%	50%	90%	85%	80%	25%	50%	55%

CW	YG	MARB	BF	REA	API	TI
+25.1	-.37	+.2	-0.074	+.8	+139.8	+74.6
85%	55%	70%	65%	80%	75%	90%