

# OMAA

ohio maine anjou association

## THE 2020 BULL & FEMALE AUCTION

March 20 & 21 • Columbus, Ohio



60 Bulls  
31 Females  
3 Elite Embryo Lots

# The 2020 OMAA BULL-NANZA

*The Largest & Best Maine Offering in the USA!*



**OMAA BULL-NANZA 2020**  
 Be on the seats for \$500  
 Buying Credit drawings  
 before & after the sale  
 See page 5  
 for details!

*Ohio/Mid Eastern Maine Anjou Association:*

OMAA President.....Tom Wilcox, Kenton, Ohio  
 OMAA Sec/Treasurer.....Candace Muir, Wapakoneta, Ohio  
 Sale Committee.....Terry Muir, Wapakoneta, Ohio

*Marketing Personnel:*

Sale Day Phones.....419/350-9159, 513/256-8575  
 Auctioneer.....Col. Kevin Wendt  
 PrimeTIME, Inc.....Greg Meyer, 513/256-8575  
 Sale Manager.....PRIME TIME, INC.



P.O. Box 305 • Perrysburg, Ohio 43552  
 877/800-9230, phone • 419/350-9159, sale days  
 567/336-6170, facsimile  
 craig@primetimeagrimarketing.com  
 www.primetime.marketing

*Schedule of Events:*  
**Thursday, March 19**  
 10:00 a.m. Maine Anjou Sale Check-In and Processing - O'Neill Building  
 1:00 pm OMAA Membership Meeting

---

**Friday, March 20**  
 9:00 a.m. Trade Show Opens  
 4-6:30 p.m. Maine-Anjou Happy Hour in the stalls of the O'Neill Building

---

**Saturday, March 21**  
 9:00 a.m. Trade Show Opens and Breed Sales Begin  
 2:00 p.m. The Ohio Maine Anjou Sale - Sale Ring II - Voinovich Center

---

**Sunday, March 22**  
 8:00 a.m. The Ohio Beef Expo Junior Show - Cooper Arena  
 9:00 a.m. Trade Show Opens

**Be Watching for Updated Sale Information at [www.primetime.marketing](http://www.primetime.marketing)**

**For Instant Updates and Continuing Information Follow Us on Twitter and Facebook**

@ptamn



## Sale Day Phones: 419/350-9159 or 513/256-8575

### Buyer Registration and Settlement:

All prospective buyers will need to register for a bidding number prior to the auction. Bidding numbers will be available at the sale preview on Friday afternoon and throughout Saturday prior to the auction in both the "Maine Alley" and near Sale Ring II in the Voinovich Center. Buyers will need a current driver's license to register. Settlement will be made and health papers/insurance may be picked up at the clerk's desk.

### Absentee Bidding & Transportation Cost Share:

If you would like to invest in some of the top genetics being offered in this sale but will be unable to attend, feel free to contact the sale manager or a member of the marketing staff as far ahead of the sale as possible. We will be happy to consult with you about the cattle, represent you on sale day at no charge, and arrange to have your purchases delivered to your farm or ranch. Live telephone bidding is available but not guaranteed. Trucking charges will not exceed \$350 per head to central points in the USA. All absentee bidders must be pre-approved.

### Lodging:

#### Sale Headquarters

The Polaris Hilton Hotel - 1-888-864-8055

### ON-SITE TRAILER PARKING FOR BUYERS ONLY!!!

On Sale Day – Saturday – Only... Buyers with trailers may enter thru the ELEVENTH AVENUE GATE for access to special trailer parking within walking distance of the sale areas. This parking is available to buyers only and is only available on Saturday morning. Exit Interstate 71 at Eleventh Avenue and follow the signs!

## Current AMAA Sire Summary Statistics

### Breed Average EPD Values:

#### Non-Parent Maine-Anjou Cattle

CED 7 BW 1.5 WW 43 YW 55 M 19 TM 41

#### Non-Parent MaineTainer Cattle

CED 8 BW 0.7 WW 44 YW 59 M 17 TM 39

Please note that bulls below 37.50% Maine-Anjou may not be shown in national shows.

*NOTE: All bulls and many females in this sale will have current ultrasound data collected by The Ohio State University. All cattle will have current weight per day of age (WDA) information. Bulls over a year of age will have also passed a breeding soundness examination (BSE) and several will qualify for the SOACDF Genetic Improvement Cost-Share Program.*

## Our 2020 OMAA Sale is Dedicated to the Maine-Anjou Memories of JOYCE MCKEE, New Paris, Ohio (August 26, 1940-May 13, 2019)

### Affordable Delivery Is Available Throughout The USA!!!

Make your purchases with any of the Marketing Personnel and we'll arrange to have them delivered directly to your farm or ranch or to a central point near you at a cost not to exceed \$350/ head.

## Sale Office Phone: 419.350.9159

Watch for updates, performance data, and sale order at [www.primetime.marketing](http://www.primetime.marketing).

### Important Sale Information:

**Terms:** Cash or check made payable to the sale clerk immediately after the sale and before any cattle are loaded. Invoiced (absentee) accounts are payable in full within 10 days of the sale or are subject to a 2% finance charge on the tenth day. A fee of \$50 will be assessed to all returned checks. **Liability:** All animals and merchandise will be at the buyer's risk as soon as bid off but will be cared for by the seller(s) for a reasonable amount of time during and immediately following the sale. Neither the owners, auctioneers, sale manager or other affiliated personnel may be held responsible for any accidents that may occur. PrimeTIME AgriMarketing NETWORK, Inc. acts only as an agent between buyer and seller and may not be held responsible for any livestock or merchandise. It is to be clearly understood that PrimeTIME AgriMarketing NETWORK, Inc. and its representatives act only as a medium between buyer and seller, and may not be held liable, financially or otherwise, for any failure on the part of the same to fulfill any obligations set forth in this sale or for the truth of any warranties expressed or implied. Neither does PrimeTIME AgriMarketing NETWORK, Inc. assume any financial obligations to collect or enforce the collection of monies between buyer and seller. This catalog has been prepared by the sale manager from information provided by the seller(s) and is assumed accurate as presented to us. However, PrimeTIME AgriMarketing NETWORK, Inc. will in no way guarantee age, pedigree, or reproductive status of the animals selling. All exceptions taken and adjustments made are between buyer and seller. **Health:** All animals will be accompanied by a health paper valid for interstate shipment. Buyers should make themselves aware of their respective state's/country's health requirements prior to the sale. **Registration and Transfer:** All registered cattle sell with complete registration certificates which will be transferred to the new owners, free of charge, following the sale. **Guarantee:** All animals sell with the standard guarantee endorsed by the AMAA. For more information, contact the AMAA office at 816/431-9950. **Insurance:** Purchases may be insured at the clerk's desk. **Announcements:** Any announcements made from the sale block by the owners, auctioneer, or sale manager take precedence over any printed materials. **Sale Booklet Prepared by:** Craig M. Reiter, Sale Manager.

# - The 2020 OMAA Sale Team -

## **ALEXANDER SHOW CATTLE**

SABINA, OH  
(937) 302-0078  
Lots: 1, 9, 20, 27, 56, 84, 100

## **BARNES BROTHERS**

W ALEXANDRIA, OH  
(937) 510-2354  
Lots: 31, 36, 97

## **BIG APPLE CATTLE CO**

GOWANDA, NY  
(716) 640-1375  
Lots: 58, 101

## **DOUBLE R FARMS/ JOHNSON & GRAY CATTLE COMPANY**

SUBLETTE, IL  
(815) 712-4327  
Lot: 46

## **DOWN FARMS**

WYOMING, IL  
(309) 238-6220  
Lot: 90

## **DUNSON FARMS**

KENTON, OH  
(567) 674-5721  
Lot: 87

## **FRIES FARMS**

WILLARD, OH  
(567) 224-2131  
Lot: 78

## **GARRETT SHOW CATTLE**

WILLIAMSBURG, IN  
(765) 969-0154  
Lots: 45, 51

## **GEIGER SHOW CATTLE**

COLUMBIA CITY, IN  
(260) 479-5397  
Lot: 43

## **GOETTEMOELLER SHOW CATTLE**

FARMLAND, IN  
(937) 459-0209  
Lots: 8, 40, 86, 94

## **GREEN OAK FARM**

NEW PARIS, OH  
(765) 546-0395  
Lots: 30, 80

## **HR CATTLE CO**

REPUBLIC, OH  
(419) 618-9092  
Lots: 4, 15, 28, 42

## **JAMES FARMS**

PARIS, MO  
(573) 473-8912  
Lots: 7, 12, 39

## **JMR SHOW STOCK**

HASTINGS, MI  
(269) 838-2930  
Lots: 85, 89

## **JONES CATTLE CO**

CHAPIN, IL  
(815) 228-7820  
Lots: 2, 6, 17, 18, 19, 21, 32, 35,  
49, 63, 68, 69, 88

## **KO CATTLE**

JACOBSBURG, OH  
(740) 312-2373  
Lots: 38, 41, 57

## **MARTIN LIVESTOCK**

BARGERSVILLE, IN  
(317) 514-6389  
Lot: 55

## **RANDY MASON & FAMILY**

LOGANSPORT, IN  
(765) 652-5201  
Lots: 5, 75

## **MOUNT ZION CATTLE**

BROOKSVILLE, KY  
(606) 402-1233  
Lot: 24

## **MUIR CATTLE COMPANY**

WAYNESFIELD, OH  
(419) 231-0738  
Lots: 3, 47

## **PARKS SHOW CATTLE**

METAMORA, MI  
(309) 781-2074  
Lots: 10, 26, 33, 54, 60, 65, 74, 96

## **PETTIGREW FARMS**

COLUMBIA CITY, IN  
(260) 229-0917  
Lots: 34, 48, 95

## **PHELPS FARMS**

MILFORD CENTER, OH  
(847) 732-9332  
Lot: 83

## **PUSHETA CREEK CATTLE**

WAPAKONETA, OH  
(419) 303-3316  
Lots: 10, 44, 66

## **NEW THIS YEAR!!!**

## **2020 MAINE-ANJOU HAPPY HOUR**

Friday, March 20 at 4 pm – In the stalls

Join us for displays of the sale cattle, food, refreshments, drawings, and more!

*Visit with the breeders about their cattle – Join the OMAA!*

# - The 2020 OMAA Sale Team -

## **R&L CATTLE COMPANY**

CLAYSVILLE, PA  
(724) 747-8589  
Lots: 53, 76

## **RINKES SHOW CATTLE**

HARRISVILLE, OH  
(740) 312-2667  
Lots: 37, 77

## **ROCK'N RL CATTLE/ BLIND BADGER RANCH**

NORTH JUDSON, IN  
(219) 869-0007  
Lots: 67, 91

## **SAGER FARMS**

FAYETTE, OH  
(419) 583-9908  
Lot: 92

## **STORK FAMILY SHOW CATTLE**

CLARE, MI  
(989) 429-6934  
Lots: 72, 73

## **THORNTON FARMS**

AMANDA, OH  
(740) 601-8566  
Lot: 93

## **TOM FARMS**

CHANDLERSVILLE, OH  
(740) 221-7141  
Lot: 25

## **SHARP FARMS**

BELOIT, OHIO  
(330) 206-5417  
Lot 102

## **TRAILS END FARM**

BELMONT, OH  
(740) 310-2170  
Lots: 81, 82

## **WINEGARDNER SHOW CATTLE**

LIMA, OH  
(419) 236-4375  
Lots: 29, 52, 59, 61, 62

## **WILLOW SPRINGS**

CATTLE COMPANY  
PRAIRIE GROVE, AR  
(479) 979-5223  
Lots: 11, 14, 16, 50

## **WROTEN LIVESTOCK**

CROWN CITY, OH  
(740) 645-0732  
Lot: 79

*An Elite Set of Cattle from These Progressive Breeders.  
They're worth your trip to see them all!*

## **OMAA BULL-NANZA 2020**

**\$500 In Buying Credits will be Drawn Before and After the Auction!**

Register for the OMAA Sale & You Are Entered to Win – Pick the High-Selling Bull & You Could Win Again

**Two prizes will be drawn at \$250 each.**

One before the auction and one after the bull sale, before the female sale.

Prizes will be applied at settlement to purchases made sale day

### **BULL VOTING**

Opens Friday at 2 pm and Closes Saturday at 1 pm

Cast your vote at the OMAA booth and be entered to win up to \$500

Pick the high seller and win!

*Join Us!*

*Our Biggest Junior  
Event is Coming to  
OHIO in 2020!*



**MAINE-ANJOU + CHIANINA NATIONAL JUNIOR SHOW  
JUNE 28 - JULY 4, 2020**

**OWNERSHIP DEADLINE - MAY 1**

**ENTRY DEADLINE - MAY 1**

**LATE ENTRY - MAY 15**

QUESTIONS?

LINDSEY@AMAAPC.COM or (816) 858-9954

**AMAA**  
AMERICAN JUNIOR MAINE-ANJOU ASSOCIATION

# - Maine-Anjou Bulls -

75% and Higher - Cattle are listed by age and breed percentage.



BW: 64  
THF - PHAF

## ASC Overdrive 181G

BULL 75% BLACK SCURRED  
CALVED: 1/03/19 AMAA: P507900

CMAC HARD CORE  
DCC HARD DRIVE 138R  
MVH MISS PINNACLE 4J  
GOET 1-80

FFF MACI  
FFF AUBURN 53

*A very unique high-percentage bull! This bull is double-bred for calving ease and arrived with just a 64 lb BW yet he is so stout featured, big hipped, and square topped, with the structure and belly to add substance and structure to any cow herd. Calving ease and the phenotype to make some great ones, this one's future is extremely bright.*

**Seller: Alexander Show Cattle**



Lot 1



BW +2.9  
WW +42.0  
YW +53.0  
M +14.0

BW: 88  
THF - PHAF

## JCC Gio 33G ET

BULL 75% BLACK POLLED  
CALVED: 2/22/19 AMAA: 501545

BPF MERCEDES BENZ 131U  
NMR MATERNAL MADE  
NMR 0-04X  
PJAJ PREMONITION 22X  
PJAJ BELIZE 414B  
PJAJ RED ALI RUBY

*Plenty to love from the great Maternal Made and a champion donor dam, this powerfully-designed bull is big footed, big hipped, and extra stout. His dam won numerous shows and a full sister sold privately this fall for more than \$10,000.*

**Seller: Jones Cattle Co**



Lot 2

**Check the Update Sheet  
for Weights, Scrotals,  
and Ultrasound Data!**



BW +1.0  
WW +35.0  
YW +45.0  
M +22.0

BW: 78  
THF - PHAF

## MCCF Giovanni 10G

BULL PB BLACK POLLED  
CALVED: 2/27/19 AMAA: 507561

BBBN X2 201X  
BNWZ DATA BANK 1311C ET  
BNWZ CALYPSO 28Y  
PREDATOR 19U

JSC KATIE 52Z  
JSC KATIE 12W

*This Databank son is going to grow into a beast in the pasture and we are excited to see what he can do! He is super sound and stout plus really cool in his build. All of our Databank calves have come easily.*

**Seller: Muir Cattle Company**



Lot 3



BW: 80  
THF - PHAF

### HR Elevated 52G

BULL 75% BLK/WHT POLLED  
CALVED: 3/02/19 AMAA: 507963

BOE GARTH  
BOE EPIC  
MISS BOE 502R  
LFCC UNSTOPPABLE 727X  
STJR NIXON  
HALLS ENCHANTRESS 936W

*As unique in his color pattern as he is in his pedigree, this impressive bull is by the red-hot Epic and from a largely outcross dam; there is no Ali, I-80, or Maternal Made in his pedigree. He has an awesome set of feet and legs plus enough dimension and shape to sire some really exciting offspring in a wide variety of scenarios.*

**Seller: HR Cattle Company**

## The OMAA Sale is Home to National Champions and Breed Leaders

*Who will it be this year?!*



BW: 78  
THF - PHAF

### RMFM Chief 4I

BULL 75% BLACK POLLED  
CALVED: 3/03/19 AMAA: 502941

SRF MASTER OF PUPPETS  
CIMM FIRST AND GOAL 12B  
CIMM NORTH STAR  
SEVEN ELEVEN  
MASON'S PENNY 5B  
MASON'S GABBY 85Z

*This is a really-good, high-percentage bull. He is bred right from a former graduate of this sale that has done awesome work, and he should have a place in any herd.*

**Seller: Randy Mason & Family**



BW +3.8  
WW +51.0  
YW +66.0  
M +18.0  
BW: 84  
THF - PHAF

### JCC Gonzo 413G

BULL PB BLACK POLLED  
CALVED: 3/03/19 AMAA: 501546

MINN HARD WHISKEY 591Y  
BOE GARTH  
BOE MISS JOLENE  
DCC HARD DRIVE 138R  
PJAJ BRENDA 412B  
PJAJ TYRA 17T

*This powerful purebred was recently selected as the Reserve Grand Champion of the 2020 Fort Worth Stock Show! He is right in every way including outstanding size and performance, plenty of muscle, easy movement, and a powerful growth profile that ranks him in the top 2% of young Maine-Anjou bulls.*

**Seller: Jones Cattle Co**







BW +4.5  
 WW +56.0  
 YW +80.0  
 M +27.0  
 BW: 90  
 THF - PHAF

### JF Ignitor 87G

BULL 75% BLACK POLLED  
 CALVED: 3/04/19 AMAA: 505623  
 MINN HARD WHISKEY 591Y  
 BOE GARTH  
 BOE MISS JOLENE  
 GVC CLOSING BELL 10U  
 GVC EBONY 015A  
 GVC EBONY 12X

An exciting Garth son from a very proven cow, this bull has done everything right and is sure to make great property. His dam has proven herself to be one of the top cows in the James outfit with a first calf selling for \$5200, a second that was a Missouri State Fair Champion, and a third being a strong herd sire.

**Seller: James Farms**



BW +1.4  
 WW +42.0  
 YW +59.0  
 M +19.0  
 BW: 78  
 THF - PHAF

### GOET 641G

BULL PB BLACK DE-HORNED  
 CALVED: 3/05/19 AMAA: 508435  
 BK UNLIMITED POWER 472  
 LDSC UNLEASHED ET  
 MISS WHISKEY DREAMS 30Z  
 BBBN X 483X  
 GOET MISS JEWELS ET  
 BPF DESTINY 110W

Quite a purebred! This bull is bred to succeed on a high level and he is off to the right start. His dam is a purebred, maternal sister to a former Ohio State Fair Champion Steer and the great sire, Drivin' 80.

**Seller: Goettemoeller Show Cattle**



BW: 62  
 THF - PHAF

### ASC Easy Money 190G ET

BULL PB BLACK POLLED  
 CALVED: 3/07/19 AMAA: P507902  
 GOET I-80  
 DADDY'S MONEY 55Z  
 JSC VELVET 112W  
 HAA WISDOM 505S  
 PKE SMART N SASSY 10Z  
 JSC COVERGIRL 2U

If you are playing the percentage game or just in the business of making good stock you need to pay attention here. This guy is a three-quarter brother to a \$9,250 feature of our 2017 lineup from a dam that was a NJHS division winner and multiple Top 5 Overall placer. By the deceased Daddy's Money, you won't find many purebreds with this kind of design and functionality, structure, center body, plus calving ease. His flush mate sister was a high seller this fall and we are planning to have many of this pedigree; they're the right kind!

**Seller: Alexander Show Cattle**



BW +0.5  
 WW +41.0  
 YW +53.0  
 M +22.0  
 BW: 80  
 THF - PHAF

### PSC Data Bank Safe 309G

BULL PB BLACK DE-HORNED  
 CALVED: 3/09/19 AMAA: 507866  
 BBBN X2 201X  
 BNWZ DATA BANK 1311C ET  
 BNWZ CALYPSO 28Y  
 TJSC HOT COMMODITY  
 TJSC COVERGIRL 10X  
 KACM 1M

This purebred bull is long bodied, up headed and clean fronted with adequate muscle. He is also loaded with genetic potential and opportunity on both the top and bottom sides.

**Seller: Pusheta Creek Cattle/Parks Show Cattle**

# MAINE-ANJOU HAPPY HOUR

Friday - 4-6:30 pm - In the stalls  
 Good times & great stock!



BW +4.4  
 WW +51.0  
 YW +70.0  
 M +26.0  
 BW: 82  
 THF - PHAF

### WSSC Chip Shot ET 298G

BULL 75% BLACK POLLED  
 CALVED: 3/10/19 AMAA: 508182  
 MINN HARD WHISKEY 591Y  
 BOE GARTH  
 BOE MISS JOLENE  
 DAINES DR SEUSS 79P  
 PHY 1Z

*Garth genetics are very limited, and they are taking not only the show world by storm but the commercial sector as well. This is a stout and rugged bull that's slam packed with power and substance all while remaining good at the ground. His growth and milk indicators rank him among the breed's most elite yearling bulls.*

**Seller: Willow Springs Cattle Company**



BW +3.5  
 WW +57.0  
 YW +80.0  
 M +19.0  
 BW: 85  
 THF - PHAF

### JF Focus 31G

BULL PB BLACK POLLED  
 CALVED: 3/11/19 AMAA: 505624  
 GVC DITTO Z56  
 GVC REMINGTON B33  
 MISS GREEN VALLEY 840U  
 GVC STATESMAN 4R ET  
 MISS GREEN VALLEY 822U  
 MISS GREEN VALLEY 310N

*Top 1% weaning and yearling growth! Focus 31G is very complete in a sound package. His Green Valley dam is a beautiful Statesman daughter with volume, a sweet udder and strong milking ability plus a super quiet disposition. This bull should make a great female sire.*

**Seller: James Farms**



BW +3.4  
 WW +49.0  
 YW +63.0  
 M +20.0  
 BW: 80  
 THF - PHAF

### WSSC Long Drive ET 151G

BULL PB BLACK POLLED  
 CALVED: 3/15/19 AMAA: 508058  
 MINN HARD WHISKEY 591Y  
 BOE GARTH  
 BOE MISS JOLENE  
 HAA WISDOM 5055  
 GRIMMS MISS WISDOM 33  
 GRIMMS MS JAZZ 33

*It is hard to make purebred Maine cattle these days that have the body, muscle and skeletal build this Garth son brings to the table. Optimal birth weight, double clean, and triple good!*

**Seller: Willow Springs Cattle Company**



BW: 82  
 THF - PHAF

### HR Epic 51G

BULL PB BLACK POLLED  
 CALVED: 3/18/19 AMAA: 507358  
 BOE GARTH  
 BOE EPIC  
 MISS BOE 502R  
 GOET I-80  
 STJR ARIZONA  
 WHRM SELMA 76W

*This purebred Epic son brings the unique pieces his sire is offering the Maine-Anjou breed in the look and build of a calving ease sire. He is small headed and smooth shouldered with a low birth weight bottom side pedigree; we'd trust this guy to clean up some heifers. His structure is impeccable and his great extension while still having enough punch is a hard combination to make. His dam was a multi-time champion and has turned into a model beef cow with a perfect udder.*

**Seller: HR Cattle Company**



BW +4.4  
 WW +56.0  
 YW +78.0  
 M +20.0  
 BW: 85  
 THF - PHAF

### WSSC Birdie Putt ET 376G

BULL PB BLACK POLLED  
 CALVED: 3/25/19 AMAA: 508195

MINN HARD WHISKEY 591Y  
 BOE GARTH  
 BOE MISS JOLENE  
 COWAN'S ALI 4M  
 NMR ALI 9/916  
 RR 901 ICEPICK

*From a great Ali daughter that never misses, this is another purebred bull that can really tune up a cow base! He is flat shouldered with a massive top and hip plus extra look and presence from the side. He will be a man at maturity.*

**Seller: Willow Springs Cattle Company**



Lot 16



BW: 83  
 TH - PHAA

### JCC TCDR Gino 23G

BULL PB BLACK POLLED  
 CALVED: 3/28/19 AMAA: P508556

BK UNLIMITED POWER 472  
 LDSC UNLEASHED ET  
 MISS WHISKEY DREAMS 30Z  
 PREDATOR 19U  
 TCDR MISS PREDATOR 23B  
 BEF MS EXPECTATION 102Y

*A black, polled, sweet-looking purebred with a largely unusual pedigree, this is a strong outcross bull you can use! He is ultra-complete and will add some attractiveness and look without sacrificing growth and power.*

**Seller: Jones Cattle Co**



Lot 17

**Check the Update Sheet  
 for Weights, Scrotals,  
 and Ultrasound Data!**



BW +3.0  
 WW +49.0  
 YW +66.0  
 M +15.0  
 BW: 82  
 THF - PHAF

### JCC Gone Rogue 604G

BULL PB BLACK DE-HORNED  
 CALVED: 3/30/19 AMAA: 507688

MINN HARD WHISKEY 591Y  
 ALL THAT MATTERS 109B  
 MINN PORSCHE 109W  
 SLC SOONER 101M  
 JCC DANICA 604D  
 KKT M BROCKLE'S FEAR THIS

*This bull has been a favorite of many for his proper structure combined with growth and substance. His depth, clean build, and unique genetics are hard to find.*

**Seller: Jones Cattle Co**



Lot 18



BW +0.5  
 WW +38.0  
 YW +49.0  
 M +13.0

---

BW: 80  
 THF - PHAF

### JCC George 695G

BULL 75% BLACK POLLED  
 CALVED: 4/02/19 AMAA: 507676

COWAN'S ALI 4M  
 BPF MERCEDES BENZ 131U  
 DCC MERCEDES 701P  
 SLC SOONER 101M  
 BBR DANA 695D ET  
 BBR ZENA 298Z

*This is a lower birth weight, polled, all-clean purebred whose dam (Sooner x X x Raptor x Whiskey) is a maternal sister to the Arthur family's heifer that is winning this season. This bull has always been one of the most eye catching and best haired in the crop.*

**Seller: Jones Cattle Co**

## Full sib embryos sell in the NJHS Fund Raiser during the auction



BW +1.5  
 WW +45.0  
 YW +63.0  
 M +16.0

---

BW: 65  
 THF - PHAF

### ASC Hustler 217G

BULL 75% BLACK POLLED  
 CALVED: 4/05/19 AMAA: 507898

BK UNLIMITED POWER 472  
 LDSC UNLEASHED ET  
 MISS WHISKEY DREAMS 30Z  
 JSC 8U  
 PKE DIANE 24A  
 PKE COVERGIRL RIHANNA 3Y

*A great bull from a great flush, this is a big opportunity package filled with hot genetics! His dam was only shown once but she won her division at the National Junior Show and she has turned into a special cow. Her son is so smooth in his makeup yet plenty stout and whistle necked plus he can really move. He will bring a lot of added value to a commercial herd as well as make show heifers on your AI cows.*

**Seller: Alexander Show Cattle**



BW: 81  
 THF - PHA

### JCC TCDR Gabe 150G

BULL PB BLACK POLLED  
 CALVED: 4/06/19 AMAA: P508557

BK UNLIMITED POWER 472  
 LDSC UNLEASHED ET  
 MISS WHISKEY DREAMS 30Z  
 BNWZ JOSE 703Y  
 TCDR MISS JOSE 150D  
 TCDR MISS PREDATOR 23B

*We love the pedigree blend of this stout, square-hipped bull that will add some bone and foot size yet keep them attractive. Keep in mind that he is four months younger than some of the others in this purebred offering but still plenty big enough to use this summer.*

**Seller: Jones Cattle Co**

# - Maine Tainer Bulls -

## Cattle are listed by age and breed percentage.



BW: 84  
THF - PHAF

### MTZ Thunderstruck F07

BULL 37.5% BLACK POLLED  
CALVED: 11/07/18 AMAA: P507585

GOET I-80  
GMAF 80 PROOF 148Y  
GMAF 148S  
BANDWAGON

25C

QUOTA

By the Frozen Gold top seller, 80 Proof, this older bull will cover plenty of cows this spring. He is big footed, sound structured, and attractive with all the power of his sire. He offers the in-demand Maine x Simmental pedigree from a dam by Bandwagon, and he comes with an awesome front end and the build of an athlete.

**Seller: Mount Zion Cattle**



Lot 24



BW: 63  
THF - PHAF

### TF Simple Solution 42F

BULL 50% BLACK DE-HORNED  
CALVED: 11/20/18 AMAA: 503413

BSC SIMPLICITY 44U  
KBSC SIMPLIFY 22C  
AGH IRISH CREAM  
WL SATCHMO  
TEF GREEN 30B  
HD BLOODSTONE

This is an exceptionally low birth weight son of Simplify that continues to impress. He puts all of the pieces together and is well balanced throughout. He gets out and fills his tracks with an easy stride and, with his advanced maturity, will be ready to cover more heifers and cows for you this year.

**Seller: Tom Farms**



Lot 25



BW +2.4  
WW +52.0  
YW +74.0  
M +13.0  
BW: 76  
THF - PHAF

### PSC Maternal Made 98F ET

BULL 25% BLACK SCURRED  
CALVED: 11/25/18 AMAA: 508478

BPF MERCEDES BENZ 131U  
NMR MATERNAL MADE  
NMR 0-04X  
BBB WM MAMAS BOY  
PSCS LUCY 210B  
100T

A favorite for many reasons, this late-fall bull checks a lot of boxes for quality and versatility. He is easy on the eyes with his racy-necked, clean-profiling design yet he is surely stout enough and plenty masculine. His dam is a full sister to the Lucy 407Z who captured Supreme Overall Female of the 2013 American Royal before becoming a very successful donor female.

**Seller: Parks Show Cattle**



Lot 26



BW +1.0  
 WW +61.0  
 YW +75.0  
 M -1.0

---

BW: 69  
 THF - PHAF

### ASC Outlaw 182G

BULL 25% BLK/WHT DE-HORNED  
 CALVED: 1/05/19 AMAA: 507896

GOET I-80  
 BAILEYS I67 948Y  
 BAI MARIAH 948W  
 CRR ABOUT TIME 743  
 H ASM 743 MINDY 007  
 WPH 739GTUNDRA 17S ET

*This bull has been an eye catcher from the beginning and, he has one of the most unique pedigrees in the offering being the natural son of a many-time Champion Hereford dam. He is super-maternal in his design, soggy-middled and cat sound with calving ease expectations, maternal ability, and the leading performance of a great herd bull.*

**Seller: Alexander Show Cattle**



BW: 75  
 THF - PHAF

### HGEN Ace Of Spades 125G

BULL 25% BLACK POLLED  
 CALVED: 1/25/19 AMAA: 499652

GOET I-80  
 DUALTHREAT 305A  
 MS ACE 308Y  
 MR HOC BROKER  
 BMW ACE 408 ET  
 MS ROCKN ACE 36U

*Already a champion and backed by a big-winning dam, this is an exciting package of tri-registered quality. This bull was already selected as the Champion Chi Bull of the 2019 Ohio State Fair and he was by his dam's side as the Champion Cow/Calf of the 2019 AJCA Junior National Show - all of this after his dam was the Fifth Overall Female of the 2018 Ohio State Fair and a division winner of the NAILE. Expectations were high for his dam - she stems from Winegardner's super-productive Rock'n Ace line that also has another top bull in this sale at Lot 61 - as she entered production and she has thus far surpassed them all. This bull is much more than a great photo.*

NOTE: This bull is also registered with the Chi and Simmental associations.

**Seller: HR Cattle Company**



**Dam of Lot 28**



BW +1.2  
 WW +47.0  
 YW +62.0  
 M +10.0

---

BW: 80  
 THF - PHAF

### BMW Mr Maternal Made 126G ET

BULL 25% BLACK POLLED  
 CALVED: 1/26/19 AMAA: 508015

BPF MERCEDES BENZ 131U  
 NMR MATERNAL MADE  
 NMR 0-04X  
 TR TRAIL BLAZER 2CA  
 TR/TKMY NOT PCA  
 TR NELLIE 375

*A real breeding bull from the ever-consistent Y Not donor, this high performer is a full brother to a set of females that averaged over \$15,000 in the 2019 Harvest of Excellence Sale. He is a full or maternal sibling to a long list of winners and previous top sellers from a PCA dam that gives this bull 15.11% Chi blood. This is a big, burly one with plenty of herd building capabilities. His younger brother also sells as Lot 59.*

**Seller: Winegardner Show Cattle**



BW: 85  
THF – PHAF

### GOF Maternal Man 80G

BULL 25% BLACK POLLED  
CALVED: 1/28/19 AMAA: 508599

BPF MERCEDES BENZ 131U  
NMR MATERNAL MADE  
NMR 0-04X  
SILVEIRAS STYLE 9303  
BPF MISS ME 528C  
BPF MISS ME 910Y

*An impressive bull from a great flush of a champion dam, this all clean and polled bull is strong and stout from every angle. His dam was Reserve Champion Chi of the 2018 Ft. Worth Stock Show and his flush mate sister was Champion Chi of the 2019 Hoosier Congress.*

**Seller: Green Oak Farm**



BW: 68  
THF – PHAF

### BBDK Primetime 904G

BULL 50% BLACK POLLED  
CALVED: 2/01/19 AMAA: 507514

PREDATOR 19U  
MINN LIVE ACTION 203Y  
JSC KATIE 5S  
IRISH WHISKEY  
M.A.C. IRISH PRIDE 216Z  
E&B LADY NEW DESIGN 2148

*From a model Irish Whiskey cow, this Live Action son exhibits that cool look while possessing the muscle, soundness, structure and hair we breed for. Just 68 pounds of birth weight with an excellent disposition.*

**Seller: Barnes Brothers**



## BULL-NANZA 2020!

**Pick the high-selling bull  
and register to bid and  
WIN UP TO \$500!**



BW +2.2  
WW +54.0  
YW +76.0  
M +15.0

BW: 88  
THF – PHAF

### JCC Granger 82G

BULL 25% BLK/WHT POLLED  
CALVED: 2/06/19 AMAA: 507687

BPF MERCEDES BENZ 131U  
NMR MATERNAL MADE  
NMR 0-04X  
BEB JUNEAU 104  
PJAJ 2T TRISTA  
LEMENAGER LADY PANDA

*Always a favorite in the crop, this black-baldy is out of a tremendous Sim-Angus cow. He checks all the boxes and will stay good a long time.*

**Seller: Jones Cattle Co**





Lot 33



Dam of Lot 33



BW +2.1  
WW +44.0  
YW +58.0  
M +17.0

BW: 72  
THF - PHAF

### PSC Maternal Made 17G ET

BULL 25% BLACK SCURRED  
CALVED: 2/09/19 AMAA: 508475

BPF MERCEDES BENZ 131U  
NMR MATERNAL MADE  
NMR 0-04X  
BBB WM MAMAS BOY

LUCY 407Z  
100T

An own son of the Supreme Overall Female of the 2013 American Royal, this bull is truly complete from any angle. His ideal body length and square hips allow him to stand with a perfect profile. The curvature of his legs and pasterns make this one unique in his structure. This future herd sire has great depth of body, forerib, and flank; all positive attributes to improve your calf crop. His in-demand dam is really stamping her calves with quality and several wins!

**Seller: Parks Show Cattle**



Lot 34



BW -0.6  
WW +40.0  
YW +51.0  
M +9.0

BW: 68  
THF - PHAF

### JPF God's Country 65G

BULL 50% BLACK POLLED  
CALVED: 2/10/19 AMAA: 501348

GOET 1-80  
DADDY'S MONEY 55Z  
JSCVELVET 112W  
GCC NEW GAME 5654C  
TJSC LUCKY LADY 135E  
FSJC CAMPBELL LUCKY LADY

A stimulating, all-clean package from the breeder of Daddy's Money and more, this low BW bull is easy to love. He is balanced, square hiped, deep ribbed, and stout legged with great flex and foot size.

**Seller: Pettigrew Farms**



Lot 35



BW +2.7  
WW +48.0  
YW +63.0  
M +11.0

BW: 82  
THF - PHAF

### JCC Gavin 31IG

BULL 62.5% BLACK POLLED  
CALVED: 2/10/19 AMAA: 501557

BPF MERCEDES BENZ 131U  
NMR MATERNAL MADE  
NMR 0-04X  
IRISHMAN  
PJAJ ALWAYS IRISH 311A  
JDS NOLA

If you need to add valuable pounds at weaning then this is your bull! This guy is big backed, big hiped, big butted and big middled with an all clean status and a heavy duty shape.

**Seller: Jones Cattle Co**





BW: 72  
THF - PHAF

### BBDK Iceman 912G

BULL 50% BLACK POLLED  
CALVED: 2/11/19 AMAA: F503430

BPF MERCEDES BENZ 131U  
BPF MIDDLE MAN 511A  
DCC LEXI 183M  
IRISH WHISKEY  
M.A.C. TEMPTRESS 62X  
E&B LADY E161 PRECISION

A heavy-duty bull from the incredible 62X cow, Iceman 912G will add power and pounds to any program. This is the same great cow family that produced the impressive Middle Man son that sold with the top of our 2019 offering. This bull is extra stout and thick all the way through, and his proven cow family is as good as it gets.

**Seller: Barnes Brothers**



BW: 85  
THF - PHAF

### RINK The Gambler 214G

BULL 25% BLACK POLLED  
CALVED: 2/14/19 AMAA: 500731

HEAT WAVE  
MONOPOLY  
WTF RUTH MEDINA  
GOET I-80  
TAG 03  
RINK 13

The son of a very predictable cow that has raised a long list of top calves including an Ohio's BEST Reserve Champion, this bull has been a standout all along and he ought to sire some tremendous calves. He is by the original Monopoly and out of a great female that has several daughters working in the herd after being selected as show winners themselves. The consistency in this cow line is remarkable, and this bull would not be offered for sale if so many of his sisters were not already in the herd.

**Seller: Rinkes Show Cattle**



BW +2.6  
WW +42.0  
YW +56.0  
M +15.0

BW: 82  
THF - PHAF

### KOSC Taylor Made 198G

BULL 62.5% BLACK POLLED  
CALVED: 2/18/19 AMAA: 507295

BPF MERCEDES BENZ 131U  
NMR MATERNAL MADE  
NMR 0-04X  
PREDATOR 19U  
MISS TAYLOR  
GVC MARISSA 026Y

If you're looking for a bull that will add true muscle shape and dimension to a set of calves without sacrificing maternal qualities, be sure to check this guy out. His second dam was a former IJBBA Maine-Anjou Show Heifer of the Year for Kori Jean McLaughlin and a top seller for Green Valley, NE, and Nowatzke, IN.

**Seller: KO Cattle**



BW: 87  
THF - PHAF

### JF Optimizer 90G

BULL 50% BLACK POLLED  
CALVED: 2/19/19 AMAA: 505622

DAMERON FIRST CLASS  
COLBURN PRIMO 5153  
SILVEIRAS SARAS DREAM 1339  
GOET I-80  
GVC CHARITY C02 ET  
GVC CHARITY 2W

This guy has been a standout since he first stood up! He is very thick, deep ribbed, and very smooth plus easy fleshing with great hair and great at the ground. Primo is proving himself as a great sire of Maine/Angus quality, and this bull is out of one of two daughters of the great Green Valley Charity 2W cow in the James herd; both are making excellent donors themselves.

NOTE: Seller is reserving the right to collect 200 units of semen for in-herd use.

**Seller: James Farms**



Lot 40



Cindy



BW +0.7  
 WW +46.0  
 YW +63.0  
 M +20.0

BW: 86  
 THF - PHAF

### GOET Drivin 644G

BULL 50% BLACK POLLED  
 CALVED: 2/22/19 AMAA: 508453

GOET I-80  
 GOET DRIVING 80  
 BPF DESTINY 110W  
 HI HO SILVER

644D  
 FABER'S CHANTEL 1Z

*A big timer from a full sister to a former Illinois State Fair Grand Champion Steer, this double-clean bull is a grandson of the famous Chantel 1Z "Charlie" donor that raised the bar for Goettemoeller and Green Oak and was a \$96,000 high-selling prospect heifer. This pedigree blends two of the most dominant females in the game and this bull will get you excited.*

**Seller: Goettemoeller Show Cattle**

## Check the Update Sheet for Weights, Scrotals, and Ultrasound Data!



Lot 41



BW +1.8  
 WW +59.0  
 YW +89.0  
 M +19.0

BW: 92  
 THF - PHAF

### KOSC What It Takes 200G

BULL 50% BLACK SCURRED  
 CALVED: 2/22/19 AMAA: 507296

PLAINVIEW LUTTON E102  
 S&R ROUNDTABLE J328  
 PVF PROVEN QUEEN 786  
 GOET I-80

ZIRCONIA  
 BNWZ HENRIETTA 2W

*This is what a Maine-Angus bull should be. He's heavy boned, beautifully structured, powerful and hairy, all while having a clean neck and smooth shoulder. His sire is yielding winners in Angus rings, and his purebred dam is a maternal sister to AI sires like General Lee and the \$75,000 Stockbroker that is the highest-selling bull in the history of this event.*

**Seller: KO Cattle**



Lot 42



BW: 83  
 TH - PHA

### HR Paternal Made 50G

BULL 62.5% BLACK POLLED  
 CALVED: 2/23/19 AMAA: P508589

BPF MERCEDES BENZ 131U  
 NMR MATERNAL MADE  
 NMR 0-04X  
 LFCC UNSTOPPABLE 727X

JDR BEAU  
 HALLS ENCHANTRESS 936W

*Here's a bull that reads really rugged and dimensional in his build. Super square in his back shape and out through his pin set which transfers down to a stout set of feet and legs. Combine that with his extra extension out front and big hair coat, and his next generation can have some extra flare to be successful from not only a practicality standpoint but in the show ring as well. His extra Maine percentage ensures every calf he sires will be eligible Maintainer, and it doesn't hurt that his mother is a former Ohio State Fair Champion either.*

**Seller: HR Cattle Company**



BW: 81  
THF – PHAF

### GEIG Wicked Whiskey ET 15G

BULL 50% BLACK SCURRED  
CALVED: 2/25/19 AMAA: 507726  
BK ICE PICK 47J  
IRISH WHISKEY  
NTC 615 EVER READY  
HEAT WAVE  
MISS SPICE GIRL  
BEF MS 75K

The highly-productive dam of this standout is a full sister to the famous Bellar 14R that combined with Irish Whiskey to produce the \$90,000 BEF Whiskey Chic that has become an elite producer for Goettermoeller, IN, and Rodgers, IA, including several top selling steers and AI sires like Burning Man. The disposition of this double-clean bull is excellent and he should make square built, attractive, sound calves.

**Seller: Geiger Show Cattle**



Lot 43



BW -0.4  
WW +45.0  
YW +67.0  
M +23.0

BW: 75  
THF – PHAF

### ACLM Space Lord 16G

BULL 50% BLACK POLLED  
CALVED: 2/26/19 AMAA: 508148  
BBBN X2 201X  
BNWZ DATA BANK 1311C ET  
BNWZ CALYPSO 28Y  
BCC CRUCIAL POINT 406  
BCC ALISHA 602  
BOOTH HILL ALISHA 927

The Angus dam of this bull is nothing but consistent. She has produced heifers that always seem to end up in the keeper pen and bulls that customers are always pleased with after purchasing them from the OMAA sale. This Maine-Angus bull is athletic and flexible for the amount of power, muscle and dimension that he has.

**Seller: Pusheta Creek Cattle**



BW: 70  
THF – PHAF

### GSC Eddie 227G

BULL 25% BLACK POLLED  
CALVED: 2/27/19 AMAA: P507186  
GOET I-80  
DUAL THREAT 305A  
MS ACE 308Y  
BHN TINMAN  
PEACHES & CREAM 013ET  
RECC SNOW WHITE 201

Look in here! What a tremendous black bull that is very soft made with power and style. Check out the genetic package here and consider that he has just a 70 pound birth weight to go with all of his shape and substance.

**Seller: Garrett Show Cattle**



Lot 45



BW: 85  
THP – PHAF

### RAPP Grand Finale 9G ET

BULL 25% BLACK POLLED  
CALVED: 2/28/19 AMAA: P508605  
HEAT WAVE  
MONOPOLY  
WTF RUTH MEDINA  
DMCC LAMBORGINI 58L  
R&C MISS LAMBORGINI 5S  
LCHMN BLK BALDY J7063

This Monopoly x Lamborghini bull is a special entry and a full brother to numerous banner winners around the USA. A full sister was Supreme Female of the Ohio Beef Expo and Reserve Maintainer at the American Royal for Crystal Creek Farms, OH, to name just one plus maternal siblings include sires like Armada and multiple high-premium stock. This is the last bull that will be produced from this combination and he is worth trying to for sure!

**Seller: Double R Farms/Johnson & Gray Cattle Company**



Lot 46



A full sister to Lot 47



BW +1.9  
 VVW +54.0  
 YW +84.0  
 M +14.0

---

BW: 79  
 THF - PHAF

### MCCF Gladiator ET 15G

BULL 37.5% BLACK POLLED  
 CALVED: 3/01/19 AMAA: 507501

GAMBLES HOT ROD  
 SILVEIRAS STYLE 9303  
 SILVEIRAS ELBA 2520  
 DCC HARD DRIVE 138R  
 TJSC HARMONY 125Y  
 BOLAN MISS HARMONY 533R

*This is one of the coolest matings produced at Muir Cattle Company! This is another great son of Harmony 125Y, herself a big winner, and he can qualify as a Maine-Angus as well as Mainetainer. He is ultra sound, unique in his build, and very complete made. His full sister, shown here, has been very popular and successful on the show scene now.*

**Seller: Muir Cattle Company**



Lot 48



BW -0.9  
 VVW +52.0  
 YW +79.0  
 M +21.0

---

BW: 76  
 THC - PHAF

### JPF Rip 40G ET

BULL 50% BLACK SCURRED  
 CALVED: 3/02/19 AMAA: F507667

GAR GRID MAKER  
 SAV BISMARCK 5682  
 SAV ABIGALE 0451  
 BBBN X 483X  
 CHAM MISS DAISY  
 MISS RIHANNA

*A smooth killer with a loaded pedigree, this bull is one you need to see in the 2020 lineup! He is bred just like a dominant show heifer for Becca Chamberlin, IN, and this guy looks ready to dominate all on his own. His dam was a \$53,000 Calf Champion at both Kansas City and Louisville, and her first son to sell is a massive, stout, monster ribbed, geek necked, wild haired one that can do it.*

**Seller: Pettigrew Farms**



Lot 49



BW +2.2  
 VVW +67.0  
 YW +98.0  
 M +19.0

---

BW: 88  
 THF - PHAF

### JCC Griffin 301G

BULL 37.5% BLACK POLLED  
 CALVED: 3/02/19 AMAA: 502657

DAMERON FIRST CLASS  
 EXAR CLASSEN 1422B  
 EXAR PRINCESS 2006  
 GOET I-80  
 PJAJ ANNA MAE 101A  
 PJAJ SAMMY ALI 24Y

*A royally bred Maine-Angus that has a tremendous look to him, this bull is long and extended through his front third and ties his neck super high into his shoulder. He is super sound and soft on his pasterns with WEPD and YEPD data that ranks him among the best 1% of the breed.*

**Seller: Jones Cattle Co**



BW +4.4  
 WW +43.0  
 YW +55.0  
 M +15.0

BW: 85  
 THF - PHAF

### WSSC Kelso ET 146G

BULL 37.5% BLACK POLLED  
 CALVED: 3/05/19 AMAA: 508194

BPF MERCEDES BENZ 131U  
 NMR MATERNAL MADE  
 NMR 0-04X  
 MAV CHARISMA 906W  
 STECK CHELSIE C 411B ET  
 SCSP CHELSIE 269M

*A fully legitimate powerhouse from Whitney Walker's Grand Champion Female of the 2016 Maine/Chi Junior Nationals, this bull is awesome in terms of muscle, rib and structure. Come to buy a real cow changer here!*

**Seller: Willow Springs Cattle Company**



BW: 65  
 THF - PHAF

### LBG Mojo 39G

BULL 25% BLACK POLLED  
 CALVED: 3/09/19 AMAA: 507187

GOET I-80  
 DUAL THREAT 305A  
 MS ACE 308Y  
 RIST CHUCKWAGON  
 LBG DIXIE I CA  
 SHIR LBG DIXIE

*By Dual Threat, sire of more than one National Champion, this is a low birth weight bull with thickness, squareness, and plenty of depth.*

**Seller: Garrett Show Cattle**



BW: 71  
 THF - PHAF

### BAW Mr Driving 80 310G ET

BULL 50% BLACK POLLED  
 CALVED: 3/10/19 AMAA: 508020

GOET I-80  
 GOET DRIVING 80  
 BPF DESTINY 110W  
 DUFF DISTINCTION 9105  
 FOREVER LADY 325B  
 WCC FOREVER LADY Y5

*This F-1 Maine x Angus bull is really complete and attractive. He catches your eye with this balance and great structure plus his calving ease and all-clean pedigree make him even easier to use.*

**Seller: Winegardner Show Cattle**



BW: 64  
 THF - PHAF

### R&L Smart 80 29G ET

BULL 50% BLACK POLLED  
 CALVED: 3/12/19 AMAA: 507879

COWAN'S ALI 4M  
 GOET I-80  
 BPF MILEY 80T  
 NICHOLS BLK DESTINY D12  
 S&S MISS SMARTY PANTS  
 WAR O FANCY PANTS 603

*A full brother to the Core family's American Royal and North American Supreme Champion Junior Female, this bull is impressively stout despite his low, low birth weight. He claims multiple brothers and sisters that have been winners and top producers like a \$43,000 full sister whose first calf brought \$17,000 this fall.*

**Seller: R&L Cattle Company**





BW +2.7  
 WW +47.0  
 YW +63.0  
 M +10.0

---

BW: 68  
 THF – PHAF

### PSC Maternal Made 31G ET

BULL 50% BLACK POLLED  
 CALVED: 3/13/19 AMAA: 508476

BPF MERCEDES BENZ 131U  
 NMR MATERNAL MADE  
 NMR 0-04X  
 SLC SOONER 101M  
 JSC MADONNA 49U  
 SF NURSES AIDE 378

*The natural son of Madonna 49U, this calf absolutely excels in terms of body shape, muscle, and power. He has ideal turn and shape to his upper rib and top, and he is big hipped and carries thickness clear to his hock. He has a maternal sister in this sale at Lot 65 plus his brother by I-80 brought \$10,000 here a year ago. This cow always delivers!*

**Seller: Parks Show Cattle**



BW +2.6  
 WW +52.0  
 YW +76.0  
 M +14.0

---

BW: 85  
 THF – PHAF

### ML Shoot To Thrill 58G

BULL 50% BLACK POLLED  
 CALVED: 3/15/19 AMAA: 508290

NMR MATERNAL MADE  
 ML MVP 23E ET  
 MISS GREEN VALLEY 535R  
 EXAR BLUE CHIP 1877B  
 BPF NEW DREAMS 59D ET  
 GCC NFLL NEW DREAMS 725T

*From the first crop by the Triple Crown Champion, MVP, this is also the first son to sell from a sweet, young female in the Martin herd. This bull offers exciting growth with more than enough look and power. Remember the bull that Martin's sold here in 2019 – The Shootist - went on to garner Reserve Champion banners at Louisville, Kansas City, and Denver.*

**Seller: Martin Livestock**



BW +2.7  
 WW +49.0  
 YW +64.0  
 M +20.0

---

BW: 79  
 THF – PHAF

### ASC TNT 197G

BULL 50% BLACK POLLED  
 CALVED: 3/16/19 AMAA: 507897

SVF STEEL FORCE S70I  
 FBF1 COMBUSTIBLE  
 LAZY H BURN BABY BURN R34  
 BBBN X 483X  
 PKE COVERGIRL 2A  
 JSC COVERGIRL 2U

*A dual-registered Sim/Maine with a great design, plenty of size and extension, plus excellent structure and depth. His dam is a direct daughter out of the cornerstone donor Covergirl 2U. This is an all-purpose, strong bull with the build to last for years.*

**Seller: Alexander Show Cattle**



BW +0.5  
 WW +52.0  
 YW +77.0  
 M +21.0

---

BW: 88  
 THF – PHAF

### KOSC Gold Peak 210G

BULL 37.5% BLACK HORNED  
 CALVED: 3/17/19 AMAA: 507298

SILVEIRAS STYLE 9303  
 MINN HYBRID 101D ET  
 JSC KATIE 55  
 GOET I-80  
 MISS SWEET TEA  
 MA BRANDYWINE 9609

Out of a great Holiday Classic cow from McCauley's esteemed Brandy cow family, this is a pedigree that always delivers. This bull is great fronted with a long neck and smooth shoulder. There's lots to like here including strong rib and top shape plus a great hip.

**Seller: KO Cattle**



BW: 89  
 THF – PHAF

### EJB Rose From Ashes 321B ET

BULL 37.5% BLACK HORNED  
 CALVED: 3/21/19 AMAA: 501529

BPF MERCEDES BENZ 131U  
 NMR MATERNAL MADE  
 NMR 0-04X  
 IRISH WHISKEY  
 BMA JADES IRISH ROSE U01  
 RF BLACK JADE 950N

This auction has produced a number of national leaders over the years and we have some great options for you again this spring including this well-bred MaineTainer that has already earned a state fair banner. Study this bull closely – inside and out – and consider that his unique pedigree is built around maternal Maine and Sim legends like Whiskey and RF Black Jade. He has elite potential and should add quality to a wide variety of cows. NOTE: Look for embryos from his dam in this auction also.

**Seller: Big Apple Cattle Co**



BW +0.9  
 WW +47.0  
 YW +62.0  
 M +10.0

---

BW: 77  
 THF – PHAF

### BMW Mr Maternal Made 322G ET

BULL 25% BLACK POLLED  
 CALVED: 3/22/19 AMAA: 508016

BPF MERCEDES BENZ 131U  
 NMR MATERNAL MADE  
 NMR 0-04X  
 TR TRAIL BLAZER 2CA  
 TR/TKMY NOT PCA  
 TR NELLIE 375

More of the strong stuff from the accomplished Y Not donor that has yielded multiple big winners, this is the flush brother to Lot 29 and a set of heifers that averaged over \$15,000 this fall. This bull is a little younger but he might be better. Please note his 15.11% Chi out-cross pedigree.

**Seller: Winegardner Show Cattle**



BW: 71  
 THF – PHAF

### CCSE First Responder 37G

BULL 50% BLACK POLLED  
 CALVED: 3/23/19 AMAA: 508555

EXG RS FIRST RATE S903 R3  
 STCC/ML FIRST CLASS ACT  
 DAMERON NORTHERN MISS 3114  
 GOET I-80  
 BKCC SARAH  
 SOONER'S X-TRA 1X

By the now-deceased full brother to Dameron First Class that highlighted a past Frozen Gold Sale, this Maine-Angus bull is really a combination package that will suit a critical eye. He is heavy and high performing yet smooth and flawless in his structure. He should sire pounds of profit and females to brag about.

**Seller: Parks Show Cattle/EBS Cattle Co**





**BMW Onset**



**Maternal sister to Lot 61**



**Lot 62**



**Full sister to Lot 62**



**Lot 63**



BW -2.4	
WW +34.0	
YW +38.0	
M +9.0	
<hr/>	
BW: 70	
THF - PHAF	

**BMW Mr Daddy's Money 325G ET**

BULL 37.5% BLACK POLLED  
CALVED: 3/25/19 AMAA: 508017

GOET I-80  
DADDY'S MONEY 55Z  
JSC VELVET 112W  
RDD DESTINY'S ACE  
MS ROCKN ACE 36U  
SLC LACI 4123P

From the amazing Rock'n Ace 36U cow that raises influential cattle with regularity, here is the maternal brother to BMW Onset. He is the first bull to sell by Daddy's Money and he offers reliable good looks and class with improved calving ease. His older sisters include nearly 50 high sellers and big winners by various bulls like Thomas Willis' ACA National Champion Female in 2019 and Sara Sullivan's National Western Reserve Champion in 2019 plus the donor dam of Lot 28.

**Seller: Winegardner Show Cattle**



BW +2.2	
WW +44.0	
YW +58.0	
M +17.0	
<hr/>	
BW: 81	
THF - PHAF	

**BMW Mr Maternal Made 326G ET**

BULL 25% BLACK POLLED  
CALVED: 3/26/19 AMAA: 508018

BPF MERCEDES BENZ 131U  
NMR MATERNAL MADE  
NMR 0-04X  
BBB WM MAMAS BOY  
HANNAHS LUCY  
25

An exciting product of a great flush, this younger bull is the full brother to the Frye family's 2019 National Western Grand Champion Junior MaineTainer Female. The gifts and potential are obvious here. All clean, all good, loaded.

**Seller: Winegardner Show Cattle**



BW +1.3	
WW +57.0	
YW +89.0	
M +16.0	
<hr/>	
BW: 80	
THF - PHAF	

**JCC Calypsos Primo 588G**

BULL 50% BLACK POLLED  
CALVED: 4/09/19 AMAA: 507675

DAMERON FIRST CLASS  
COLBURN PRIMO 5153  
SILVEIRAS SARAS DREAM 1339  
SLC SOONER 101M  
BBR CALYPSOS BABE 588C  
BNWZ CALYPSO 403Z

We are excited to present this 2020 lineup of bulls that is filled with good ones from youngest to oldest. This Primo son stems from the same great cow family that yielded BNWZ Databank and his great sisters. This lower BW bull will help with rib shape, muscle, and fleshing ability.

**Seller: Jones Cattle Co**



# - Maine Anjou Females -

Cattle are listed by age and breed percentage.



BW +0.6  
 WW +42.0  
 YW +52.0  
 M +18.0  
 THF - PHAF

## PSC Fancy Lady 418F ET

COW 75% BLACK POLLED  
 CALVED: 4/18/18 AMAA: 493174

COWAN'S ALI 4M  
 GOET I-80  
 BPF MILEY 80T  
 SLC SOONER 101M  
 JSC MADONNA 49U  
 SF NURSES AIDE 378

**Bred to calve March 22 to Data Bank – Calf Sex: Heifer**

Winning blood and great looks from the great Madonna 49U that also gave us Lot 54 plus a \$10,000 bull a year ago not to mention banners at the World Beef Expo, Aksarben, Iowa State Fair, and Michigan Winter Classic, this is a high-percentage package built for immediate profit! This heifer was unbeaten in her show career and she will calve right when you get her home to Data Bank... with a heifer calf!

**Seller: Parks Show Cattle**



BW +0.4  
 WW +47.0  
 YW +66.0  
 M +21.0  
 THF - PHAF

## ACLM Grace 15G

COW 75% BLACK POLLED  
 CALVED: 3/20/19 AMAA: 508113

BBBN X 483X  
 BNWZ DATA BANK 1311C ET  
 BNWZ CALYPSO 28Y  
 GVC MAVERICK 05U  
 ACLM JUICY WIGGLE 5B  
 SEXY AND I KNOW IT

**Sells open**

Capacity and power hits the nail on the head with this heifer, and cow power to boot. She is a granddaughter of ACLM Sexy and I Know It, a full sister to KS She's So Sweet 9, a leader at Jones Show Cattle, OH. ACLM Grace 15G is deep bodied with substance and muscle yet has the athletic ability to move around with ease.

**Seller: Pusheta Creek Cattle**

**MAINE-ANJOU  
 HAPPY HOUR**  
 Friday – 4-6:30 pm – In the stalls  
*Good times & great stock!*



BW +0.2  
 WW +42.0  
 YW +55.0  
 M +17.0  
 THF - PHAF

## BBR Grand Lady 3G ET

COW 75% BLACK POLLED  
 CALVED: 4/04/19 AMAA: 508035

BBBN X 483X  
 BBR DENVER 1D ET  
 BPF EVA 517Y  
 MINN HARD WHISKEY 591Y  
 GEF MISS DOMINATRIX 236A

**Sells open**

Red hot and winning genetics, this Denver daughter is out of the wildly hot, GEF Miss Dominatrix, dam of a recent Ft. Worth Champion and several other wins in recent crops. This heifer has the front pasture fashion!

**Seller: Rock'n RL Cattle/Blind Badger Ranch**





BW +1.9
WW +33.0
YW +42.0
M +17.0
TH - PHA

### JCC Galant 705G

COW 75% BLACK POLLED  
 CALVED: 4/07/19 AMAA: 507678  
 COWAN'S ALI 4M  
 BPF MERCEDES BENZ 131U  
 DCC MERCEDES 701P  
 BK UNLIMITED POWER 472  
 PJAJ ELANTRA 14E  
 PJAJ MISS POLYGRAPH 14

**Sells open**

*The kind that wins, this heifer is exciting and has a super disposition. Her mother is a full sister to the 2016 Illinois Expo and Illinois State Fair Champion Maine-Anjou Female.*

**Seller: Jones Cattle Co**



BW -0.9
WW +38.0
YW +42.0
M +16.0
THF - PHAF

### JCC Gisella 703G

COW PB BLACK POLLED  
 CALVED: 4/14/19 AMAA: 507682  
 COWAN'S ALI 4M  
 BPF MERCEDES BENZ 131U  
 DCC MERCEDES 701P  
 DMCC LAMBORGINI 58L  
 PJAJ MISS LAMBORGINI 204  
 LAPE CINNAMON GIRL 421P

**Sells open**

*Here is a calving ease purebred heifer with the softer middle and easier movement that shows well and makes money after.*

**Seller: Jones Cattle Co**

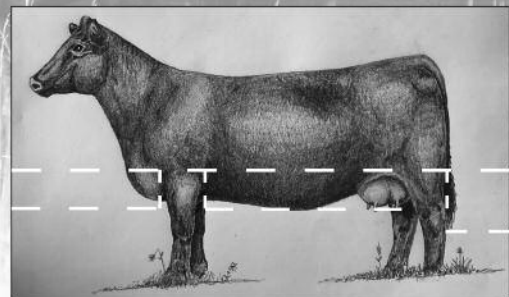
# MAINE ANGUS

For a full description of  
 Maine Angus requirements,  
 visit our website:  
[maine-anjou.org](http://maine-anjou.org)

### MAINE ANGUS COLOR STANDARDS

All qualifying individuals will be predominately solid black or red in color. White markings are only allowed on the underline and switch of the tail. Feet and legs must be solid black or red.

- NOTE: All Maine Angus animals that do not meet the color requirement, but were registered prior to Jan. 1, 2019, will retain their Maine Angus papers. They will not be able to exhibit/show in the Maine Angus division, but are still eligible to show as Mainetainers.
- If an animal is registered Maine Angus, but is found to not meet the color requirements, they will be reverted to a Mainetainer registration.



# - Maine Tainer Females -

Cattle are listed by age and breed percentage.



CAF

## Polly's Pride 200F

COW PB BLACK POLLED  
CALVED: 2/13/18 AAA: 19463596

SILVEIRAS CONVERSION 8064  
SAC CONVERSATION  
LAFLINS FARRAH 0252  
GCC KING GEORGE 650A  
CARDINAL POLLYANNA 34D  
GCC POLLYANNA 670A

**Bred to calve April 2 to LLW CARD Simplify 436F**

*Doug Stork always brings his best breeds to this sale and this year is no different. This is an Angus female bred to CARD Simplify 436F, and she is a steer making dream. Her width, dimension and muscle shape will help you raise those unicorns we are all searching for. If raising steers isn't your thing, her rib shape and easy fleshing ability will let you raise outstanding females as well.*

**Seller: Stork Family Show Cattle**



Service Sire to Lots 72 and 73



BW +0.5  
WW +49.0  
YW +64.0  
M +17.0  
THF - PHAF

## DJKS Miss Pearl 400F

COW 25% BLK/WHTPOLLED  
CALVED: 4/03/18 AMAA: 500943

GOET I-80  
FM MR 180  
SJF MISS DRIVER  
WALKS ALONE  
LLW PEPPER'S PICK 72B  
3C MACHO

**Bred to calve April 27 to LLW CARD Simplify 436F**

*Another super nice bred from the Stork Family! Her dam is a Walks Alone daughter purchased from Cardinal Cattle that was successfully campaigned in MI a few years ago. Pearl 400F is beautiful on the profile yet doesn't disappoint from behind. She takes a long and easy stride off both ends and is ready to go to work for you.*

**Seller: Stork Family Show Cattle**



Dam of Lot 73



BW +2.0  
WW +38.0  
YW +44.0  
M +15.0  
THP - PHAF

## PSC Cookie Dough 518F ET

COW 50% BLACK POLLED  
CALVED: 5/18/18 AMAA: 501513

WALKS ALONE  
HERE I AM  
GORS 805  
COWAN'S ALI 4M  
PSC I-69 3Y  
BPF MILEY 80T

**Bred to calve March 25 to Daddy's Money - Calf Sex: Bull**

*This powerful heifer was a multiple winner for Brendan Parks, MI, and her dam - the full sister to I-80 - is one of the most consistent females working in our business. Not many heifers can win the market heifer division one day then win the breeding heifer division the next. This one has great expectations as a high-quality producing female and she will pay you back quickly.*

**Seller: Parks Show Cattle**



Lot 74



Donor 3Y



TH - PHA

### RMFM Mercy 13F

COW 62.5% BLACK POLLED  
CALVED: 12/06/18 AMAA: 499966

SRF MASTER OF PUPPETS  
CICM FIRST AND GOAL 12B  
CICM NORTH STAR  
KKLM MR SMOKIN ICE 25X  
MASON'S GABBY 85Z  
MASON'S FANCY

**Sells open**

*A class winner at the Indiana State Fair, this is a very good heifer and a daughter of the top cow in the Mason herd.*

**Seller: Randy Mason & Family**



THF - PHAF

### R&L Primo Candy 01G

COW 25% BLACK POLLED  
CALVED: 1/21/19 AMAA: 501699

DAMERON FIRST CLASS  
COLBURN PRIMO 5153  
SILVEIRAS SARAS DREAM 1339  
GOET I-80  
ROLC I-80 CANDY 04D ET  
LLSF EYE CANDY Y792

**Sells open**

**Seller: R&L Cattle Company**



THF - PHAF

### RINK Dream Girl 203G

COW 37.5% BLACK POLLED  
CALVED: 2/03/19 AMAA: 504086

DAMERON FIRST CLASS  
COLBURN PRIMO 5153  
SILVEIRAS SARAS DREAM 1339  
GOET I-80

ML JESS

DOUBLE BARREL X AN X MA

**Sells open**

*A daughter of the high-selling cow in the 2019 Dream Girls Sale, this is a special heifer that is only being sold for two reasons: (1) lack of space (2) the desire to watch her show. This heifer will get noticed as soon as she enters the ring and her dam was a winning show heifer herself.*

NOTE: Seller is reserving the right to two flushes or not less than 10 embryos at their expense and buyer's convenience.

**Seller: Rinkes Show Cattle**



BW +3.4  
VW +41.0  
YW +52.0  
M +18.0  
THC - PHAF

### FFF Buckeye Whiskey 32G

COW 50% BLACK POLLED  
CALVED: 2/10/19 AMAA: 508002

DCC HARD DRIVE 138R  
MINN HARD WHISKEY 591Y  
JSC KATIE 5S  
HEAT WAVE  
EKCC MISS BUCKEYE  
EKCC CX X MA X AN

**Sells open**

*There is nothing typical about this heifer that brings power all the way from the ground up. Her donor dam is a past Ohio State Fair Market Heifer Champion and this unit has the mass, hair, and structure to make a major producer herself. Here's a bet that she'll pay for herself with the first steer calf she raises.*

**Seller: Fries Farms**



THF - PHAF

### WL Miss Watch This 01G

COW 25% BLK/WHT POLLED  
 CALVED: 2/13/19 AMAA: 507909  
 HETN NO WORRIES 138Z  
 WATCH ME WORK  
 CYT CARMELE'S DIAMOND ET  
 LFCC UNSTOPPABLE 727X  
 SLFA LABYEJUST A PHENOMENON

**Sells open**

*This is Wroten Livestock's OMAA Sale debut and they've brought a really nice female to set the tone! She combines a good foot, great hair and a smooth front third, all in a beautiful feminine package. It's tough to poke a hole in her and she moves like a cat!*

**Seller: Wroten Livestock**



THU - PHAF

### GOF Miss Wow 30G

COW 25% BLACK POLLED  
 CALVED: 2/21/19 AMAA: 508598  
 BPF MERCEDES BENZ 131U  
 NMR MATERNAL MADE  
 NMR 0-04X  
 BC LOOKOUT  
 WOW FACTOR  
 HEAT WAVE

**Sells open**

*The first daughter to sell here from a former National Western division champion, this heifer definitely has some "wow" to her!*

**Seller: Green Oak Farm**



## All Cattle Selling are Eligible for the 2020 National Junior Show in Lima, Ohio

ENTRY DEADLINE: MAY 1, 2020



THF - PHAF

### TEF Noakley 4G

COW 37.5% BLK/WHT POLLED  
 CALVED: 3/01/19 AMAA: 501780  
 GOET I-80  
 HETN NO WORRIES 138Z  
 RAPP NATURAL WOMAN 138U  
 SMA WATCHOUT 482  
 SULL CRYSTAL 7086E ET  
 SULL LADY CRYSTAL 434P1

**Sells open**

*Here is a brockle-faced female that you sure can get excited about! She was shown once and was named Supreme Champion Female as a 4-month-old calf and her dam was a big winner during her day as well. This gal has all kinds of power but is still very much a female!*

**Seller: Trails End Farm**





Lot 82



THU - PHAF

### TEF Harley 2G

COW 37.5% BLACK POLLED  
 CALVED: 3/10/19 AMAA: 502339  
 SILVEIRAS STYLE 9303  
 TSSC HIGH STYLE 677D ET  
 JSUL WHO DAT LADY 2037Z  
 GOET I-80

TEF HAZEL  
 TEF RED 52

**Sells open**

A big time show prospect here from the breeder of the 2019 NAILE Grand Champion Steer! You've got to love this one's outline, soundness, and power. Her mother was Reserve Champion of the calf division at the North American in 2016, and this heifer is dual registered both Chianina & Maintainer so let the summer fun begin!

**Seller: Trails End Farm**



Lot 83



THF - PHAF

### PFK Bear 29G ET

COW 37.5% BLACK POLLED  
 CALVED: 3/14/19 AMAA: 508003  
 GOET I-80  
 DADDY'S MONEY 55Z  
 JSC VELVET 112W  
 MR HOC BROKER  
 CHEZ STCC MILEY 5034C  
 GF/HS MILEY X243

**Sells open**

Book your rooms for Lima and get ready to have some success with this first Maine daughter of Miley 5034C, a winner herself and now one of the lead donors at Trennepohl Farms, IN. This heifer has looked special since birth and she now offers impressive performance, great balance, and great structure. Her older sister was Res. Champion Simmental of the 2018 Hoosier Congress for Camryn Clapp, IN.

**Seller: Phelps Farms**



Lot 84



BW -1.2  
 VVW +48.0  
 YW +68.0  
 M +12.0  
 THF - PHAF

### ASC Miss Uno 198G

COW 50% BLACK POLLED  
 CALVED: 3/17/19 AMAA: 503249  
 OCC LEGEND 616L  
 GCC LEGEND 6668D  
 ETR GCC FORMERA A776  
 DADDY'S MONEY 55Z  
 GCC MISS UNO 7441E ET  
 BK UNO 809

**Sells open**

This special Maine-Angus is a reluctant sale offering as she has been on the fast track to the donor pen. Her dam was the high-selling Maine bred heifer of the Griswold Classic Sale so we know how this heifer will develop. She is so good in her front third, so deep and so much the look of a great cow and show heifer. The Junior Nationals are in Ohio this year with a special division for these Maine-Angus cattle, this one needs to be there.

**Seller: Alexander Show Cattle**



THF - PHAS

### JMRSS Elle 325G

COW 62.5% BLK/WHT POLLED  
 CALVED: 3/25/19 AMAA: 507148  
 HETN NO WORRIES 138Z  
 SHAT NOT WORRIED  
 SHAT MS STOP ME  
 IRISH WHISKEY  
 ML ELLIE 121B  
 BBR WAVERLY 996W

**Sells open**

Here is a colored up heifer that is backed by some breed greats. Her sire traces to Rowe Peerless and he has a pedigree that reads like a show steer. Her dam - Irish Whiskey and BBR Waverly 996W, a National Champion - is a maternal powerhouse. This heifer could go any direction in a program, especially with her 62.50% pedigree. She'll catch your eye with her markings and how well designed she is.

**Seller: JMR Show Stock**



BW -0.5  
 WW +32.0  
 YW +37.0 M  
 +22.0  
 THU - PHAF

### GOET Getcha Some Mercy 63G ET

COW 37.5% BLACK POLLED  
 CALVED: 3/25/19 AMAA: 508434

GOET I BELIEVE  
 GETCHA SOME ET  
 ASR DREAMS COMETRUE 301Z  
 COWAN'S ALI 4M  
 BPF MERCEDES 128U  
 DCC MERCEDES 701P

**Sells open**

An own daughter of Goettemoeller's amazing Mercedes 128U, herself a National Champion, and now the well-proven dam of greats like an Ohio State Fair Supreme Champion Female, a Louisville Reserve Grand Champion Female, steers over \$50,000, and amazing bulls like Man 2 Man, Set Me Free, and Big Ticket to name a few. Buy, show, win, love. Mercy.

**Seller: Goettemoeller Show Cattle**



Lot 86



THC - PHAF  
 DSC

### Dunson 33G

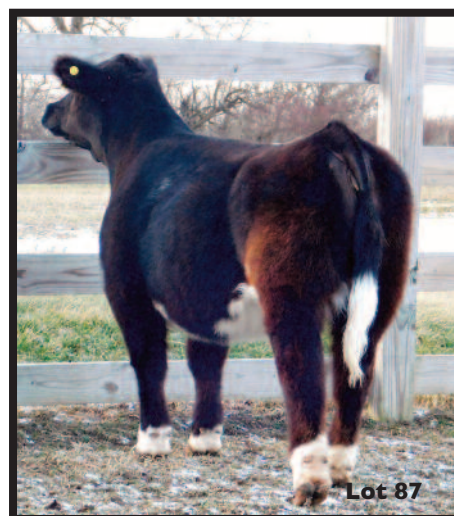
COW 25% BLK/WHT POLLED  
 CALVED: 4/03/19 AMAA: 507571

MONOPOLY  
 FU MAN CHU  
 MISS DOLLY 309P  
 BPF PRINCESS 62Y  
 DCC PLAYMATE 32S

**Sells open**

This chromed up female is really good looking and she can strike a pose with ease. She is wide made, deep bodied, big boned, with added muscle and shape, while being good necked, sound and very hairy.

**Seller: Dunson Farms**



Lot 87



BW +3.6  
 WW +32.0  
 YW +45.0  
 M +20.0  
 THF - PHAF

### JCC Georgia 59G ET

COW 62.5% BLACK POLLED  
 CALVED: 4/03/19 AMAA: 507677

MONOPOLY  
 LFCC UNSTOPPABLE 727X  
 LFCC LADY K 727T  
 BBR RUMOR MILL  
 BBR BOMBSHELL 473B  
 BBR MISS 941W

**Sells open**

This heifer has all the pieces to be super competitive this season. Her donor dam is a \$25,000-valued female that keeps stamping out quality. This daughter is double clean and polled with sweet feet, hair, and look.

**Seller: Jones Cattle Co**



Lot 88



TH - PHA

### JMRSS Lacy 48G

COW 37.5% BLK/WHT POLLED  
 CALVED: 4/08/19 AMAA: 507149

HETN NO WORRIES 138Z  
 SHAT NOT WORRIED  
 SHAT MS STOP ME  
 MSF JOURNEY  
 JMRSS 2/20C  
 HHB LACY 352A

**Sells open**

She may be young, but does she pack a punch. This heifer is big boned, choke necked, big topped and just so uniquely designed. This baldy female is sure to stand out in a crowd.

**Seller: JMR Show Stock**



THP - PHAU

### Down Ruby Tuesday 908G

COW 37.5% RED/WHT POLLED  
 CALVED: 4/10/19 AMAA: 508561  
 GOET DRIVING 80  
 ITOWN  
 LLL RED LADY DOCTOR 02A  
 MAN AMONG BOYS  
 CARD RUBY 114B  
 CARD IRIS 911X

**Sells open**

*A redheaded show stopper from a predictable cow family, this heifer is sure to turn plenty of judge's heads this summer. She may be dual registered as a Chi if desired. Her dam was a featured high seller of a past Program Female Sale, is a model cow, and this heifer looks identical to her!*

**Seller: Down Farms**



BW +1.3  
 WW +45.0  
 YW +60.0  
 M +13.0  
 THF - PHAF

### BBR Great Class 16G

COW 50% BLK/WHT POLLED  
 CALVED: 4/11/19 AMAA: 502881  
 DADDY'S MONEY 55Z  
 MINN CLASS ON CLASS 77E ET  
 JSC KATIE 5S  
 SILVEIRAS STYLE 9303  
 BBR DEVINE 671D  
 BBR MORGAN 1278Z

**Sells open**

*Big color. Big quality. Sired by the popular Class On Class and out of a striking Style daughter at Blind Badger Ranch, this female has all the makings to be a program feature for years to come. Stout, soft footed and big legged, accompanied by great balance will propel this female to the front of your program.*

**Seller: Rock'n RL Cattle/Blind Badger Ranch**



THP - PHAU

### SAGR Georgie 1G

COW 37.5% BLACK POLLED  
 CALVED: 4/19/19 AMAA: 508115  
 SAK SUMMIT 1Y  
 SAK MCKINLEY 96C  
 SAK 989  
 LFCC UNSTOPPABLE 727X  
 ACLM PISTOL SMOKE 11C  
 ACLM PISTOL SMOKE 11X

**Sells open**

**Seller: Sager Farms**



THF - PHAF

### BCST Frosty Lady 10G

COW 37.5% BLACK POLLED  
 CALVED: 4/21/19 AMAA: 503942  
 GOET I-80  
 DADDY'S MONEY 55Z  
 JSC VELVET 112W  
 EXAR BLUE CHIP 1877B  
 FROST CHIPS 15E  
 FROST ANITA 546A

**Sells open**

**Seller: Thorton Farms**



BW +1.9  
 WW +34.0  
 YW +44.0  
 M +20.0  
 THP - PHAF

### GOET Believe In Mercedes 699G

COW 25% BLACK POLLED  
 CALVED: 4/24/19 AMAA: 508433  
 MONOPOLY  
 FU MAN CHU  
 MISS DOLLY 309P  
 GOET I BELIEVE  
 BELIEVE MERCEDES 699D ET  
 BPF MERCEDES 128U

**Sells open**

*Another knockout from the Mercedes 128U line at Goettemoeller Show Cattle, this heifer is a maternal sister to Lot 86. You can see the quality and potency in this pedigree and this heifer will get your heart started when you think of what she can do. A full sister to her dam was a winner and is now a popular donor for Kendra Folkerts, MN. The Mercedes 128U daughters are elite cows.*

**Seller: Goettemoeller Show Cattle**





BW +2.7  
 WW +52.0  
 YW +74.0  
 M +18.0  
 THF – PHAF

### JPF Miss April 51G

COW 37.5% BLACK POLLED  
 CALVED: 4/28/19 AMAA: 507331  
 BK UNLIMITED POWER 472  
 LDSC UNLEASHED ET  
 MISS WHISKEY DREAMS 30Z  
 CSCX BANDWAGON 513A  
 BSC APRIL 51C  
 51

#### Sells open

The maternal sister to the high-selling female of our 2019 offering that went to Young Cattle Company, OH, this is another fancy daughter of a great cow. She will make a dynamic breeding piece with her square hip and top, bold rib, and flat shoulder.

**Seller: Pettigrew Farms**



BW +0.9  
 WW +50.0  
 YW +70.0  
 M +12.0  
 THF – PHAF

### PSC Black Cougar 508G

COW 25% BLACK POLLED  
 CALVED: 5/08/19 AMAA: 508479  
 COLBURN PRIMO 5153  
 PSC BLACK PANTHER 523E ET  
 JSC MADONNA 49U  
 HERE I AM  
 PSC MISS SHELBY 53E ET  
 M.A.C. SHELBY 106Y

#### Sells open

A smooth and sultry killer with a loaded pedigree, this heifer is sure to be popular. She is extra-long and level, freaky necked, and beautiful headed with the best kind of hair. Note the presence of Parks' great Madonna 49U and Shelby 106Y in this pedigree. She is legit and what about that profile!

**Seller: Parks Show Cattle**



THF – PHAF

### DCBB Sweet Rose 933G

COW 37.5% BLACK POLLED  
 CALVED: 9/30/19 AMAA: 508100  
 HAUN JESSE JAMES  
 SWEET BABY JAMES  
 MS 180 244Z  
 GVC MAVERICK 05U  
 BBBDK ROSE  
 WBCC REVOLUTION ROSE 5086

#### Sells open

For the fall division and ready to start winning after the sale, this young one is super flashy and extended. You'll get extra show time from this heifer due to her age and she ought to be great fun all along!

**Seller: Barnes Brothers**

## Welcome to The Beast In the East!

Dear Friends and Cattlemen:

What an event our 2020 OMAA Sale promises to be! I am so excited to gather next month for what sure looks to be the most exciting set of Maine cattle that we've been able to offer yet. I salute the great breeders in this offering for bringing out their best for your appraisal in this annual event. Make your travel plans now to be on the seats when ownership is decided. Columbus is a great town and I know we will have some fun!

Big things are happening in the Maines and big things are coming to Ohio! The 2020 National Junior Show will be held this June in Lima, Ohio and it is always a great event for juniors interested in cattle or livestock in general. Plan to get involved in any of the contests and remember that the entry deadline is May 1. **EVERYTHING we sell March 21 can go to this special show and all of the heifers can show in Sunday's Ohio Expo Junior Show.**

Thanks so much to my crew, the OMAA board, our consignors, and the Ohio Expo Committee for making the Ohio Expo such a special and fun event. If you have never been, I strongly urge you to attend this year to take in an awesome trade show, a tough junior show, and our OMAA Sale; we will stack our offering up against any you will find.

Please call any of the auction staff or the consignors if you have questions about the cattle; they'll be happy to chat with you and some will have more to share than what we can fit in this book. **REMEMBER, online bidding is NOT AVAILABLE** for this auction so plan ahead. We can buy for you – and we're good at it – but it is way better if you attend. The Beast In the East is an event to remember!

Happy Calving...Spring is here!

Craig Reiter, Auction Manager

419.350.9159 | craig@primetime.marketing | @ptamm



# - OMAA Embryos - Elite Packages from Breed Leaders

## Special NJHS Fundraiser Item



Full brother to Lot 100

### Embryos of PKE Diane 24A

REG. 75% MAINE-ANJOU COW 444796  
BLACK POLLED

SLC SOONER 101M

JSC 8U

SF NURSES AID 378

DCC HARD DRIVE

PKE COVERGIRL RIHANNA 3Y

JSC COVERGIRL 2U

THF - PHAF

**DONOR PEDIGREE - FOR REFERENCE ONLY**



### Lot 100 - Three embryos by LDSC Unleashed ET

At least one pregnancy is guaranteed when implanted by a certified tech within 18 months of auction time

The first embryos to sell from this former Division Champion of the AJMAA National Junior Heifer Show, the proceeds from the auction of this lot will go to benefit the 2020 National Junior Show that will be held in Lima, Ohio. The calves from this combination will make full mates to the Lot 20 standout in this offering.

**Seller: Alexander Show Cattle**

**See Lot 20 for more information**

### Embryos of BMA Jades Irish Rose U01

REG. 37.5% AMERICAN MAINTEINER COW 421469

BK ICE PICK 472J

IRISH WHISKEY

NTC 615 EVER READY

MEYER RANCH 734

RF BLACK JADE 950N

LBF/DB BLACK JADE J950

**DONOR PEDIGREE - FOR REFERENCE ONLY**



### Lot 101A - Three embryos by Class On Class

### Lot 101B - Three embryos by Class On Class

Available for pickup or shipping sale day

At least one pregnancy/package is guaranteed when implanted by a certified tech within 18 months of auction time

Hot stuff from a lasting line of great cattle, these are the first of this combination to ever sell! See Lot 58 for proof of what this donor will produce and consider that the Black Jade 950N cow raised multiple national winners and progeny up to \$90,000. These calves should be some jack necked, sow bellied half-blood Maines built for the future.

**Seller: Big Apple Cattle Co**

**Pickup or ship embryos sale day**

**See Lot 58 for more information**



Irish Rose U01

## Embryos of BPF Mariah 54X

REG. 37.5% OMAA FEMALE 407924

COWAN'S ALI 4M  
BPF MERCEDES BENZ 131U  
DCC MERCEDES 701P  
MOSSY OAK  
BPF MARIAH X  
ANGUS

DONOR PEDIGREE – FOR REFERENCE ONLY



**Lot 102A – Three IVF Female Embryos by Databank**

**Lot 102B – Three IVF Female Embryos by Databank**

Available for pickup or shipping sale day

At least one pregnancy/package is guaranteed when implanted by a certified tech within 18 months of auction time

Hot embryos from the National Western winner and \$30,000 Holiday Classic topper, Mariah 54X, here is your first chance to create full sisters to her most recent success.

This cow has been hot since she started but she blended with Databank to create the Tebo family's Champion Maine-Anjou Heifer of the 2019 Hoosier Congress in her first time out.

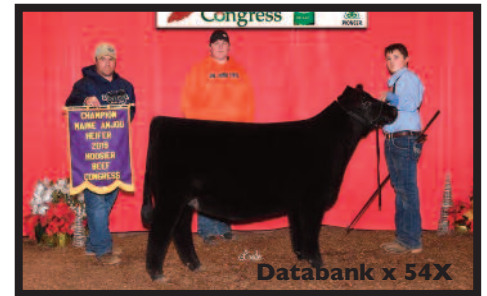
Other calves from Mariah 54X this past fall included three over \$10,000 as both market heifers and steers. It will not be long before she records a big time bull calf either. Get in.

**Seller: Tolle Show Cattle and Sharp Farms**

*Pickup or ship embryos sale day*



Mariah 54X



Databank x 54X

# JOIN US AT THE OMAA HAPPY HOUR & DISPLAY

Friday – 4-6:30 pm – In the stalls  
*Cattle on display with food & fun!*

## Congratulations to Coal Creek Cattle, Lafayette, CO!

The sire of this premium steer and several others in their 2019 calf crop was purchased sight-unseen in the 2018 OMAA Sale.

Great work by the Serrano family and  
THANKYOU for your continued  
trust and business!





P.O. Box 305  
Perrysburg, Ohio 43552

[www.primetimeagrimarketing.com](http://www.primetimeagrimarketing.com)



DATED MATERIAL - DO NOT DELAY

# OMAA

ohio maine anjou association

**THE 2020  
BULL & FEMALE AUCTION**

**March 20 & 21 • Columbus, Ohio**