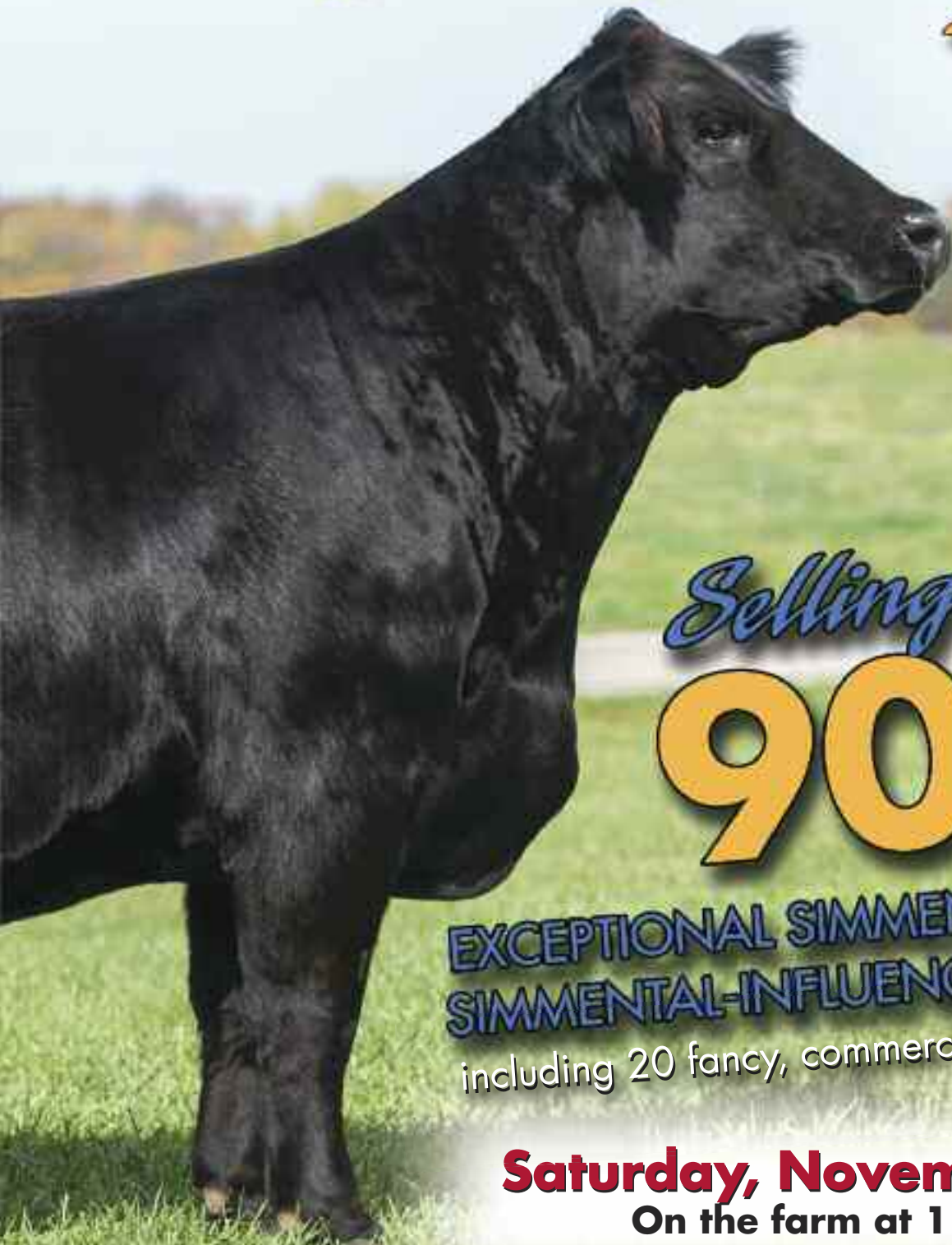




Right By Design

2014



Selling
90

**EXCEPTIONAL SIMMENTAL AND
SIMMENTAL-INFLUENCED CATTLE**
including 20 fancy, commercial bred heifers!

Saturday, November 29

On the farm at 1 pm

Just off US 36 and I-69 near Middletown, Indiana

COW POWER *that Shows*

Easy Doing, Heavy Milking, Genetically Clean Stock from Our Pasture to Yours!



Camryn Clapp, IN, with the top selling heifer calf of our 2013 sale

Great Quality and Value!

Many registered females sold between
\$2,500-\$3,500 in our previous sales

2013 PRICE RANGE = \$2,200 TO \$56,000 WITH AN AVERAGE PRICE OF \$3,901/HD

Come and See for Yourself!

AN INDIANA FAMILY FARM SINCE 1938 – WWW.TRENNEPOHLFARMS.COM

Trennepohl Farms'

Right 2014

by DESIGN

Saturday afternoon, November 29 – 1 pm EST

On the farm near Middletown, Indiana
Minutes from I-70 and I-69 in east-central Indiana

GPS Address: 6591 W County Road 625 N – Middletown, Indiana 47356

Plan to join us Friday and Saturday for all-day cattle viewing, great food, and a Late Thanksgiving Party on Friday night with live music by Walker County!



SIMMENTAL - SIMANGUS - SHORTHORN
Hay - Straw - Grain

6591 W County Road 625 N • Middletown, IN 47356

765.620.1700 - Scott
765.620.0733 - Jeff

Wes Hartzell, Crops & Equipment: 317.212.8982
Thomas Lundy, Show and Sale Cattle: 502/471-0354

www.trennepohlfarms.com

**New in
2014!**

BUYING BONUSES!!!

Gold (Top) Buyer will receive
3 embryos
Silver (2nd) Buyer will receive
10 straws of semen
Bronze (3rd) Buyer will receive
5 straws of semen

Driving Directions:

From US 36 & SR 3 near New Castle, IN take US 36 west for 6.5 mi to 700W. Turn north to farm.

From US 36 & SR 109 at Emporia, IN take US 36 east for 6 mi. past high school to 700W. Turn north to farm.

Nearby Lodging:

Hampton Inn - Anderson - 765/622-0700

Holiday Inn - Anderson - 765/779-0111

Fairfield Inn - Anderson - 765/644-4422

Super 8 - Anderson - 765/642-2222

Garden Inn - New Castle - 765/529-0345

Steve Alford Inn - New Castle - 765/593-1212

Ask for the Trennepohl Farms block

Right By Design *Female Sale*

Right By Design Event Schedule

Now thru November 26

See the cattle anytime on the farm or stop by our NAILE stalls for more information

November 27

Have a Happy Thanksgiving!

Friday, November 28

Food & Refreshments available all day

Noon - Official cattle display begins

6:00 p.m. - Dinner is served at the Trennepohl Farms

After-Thanksgiving Party featuring live music by Walker County

Saturday, November 29

9:00 a.m. - Cattle on display

Noon - Steak & more for lunch

1:00 p.m. EST - Right By Design Sale 2014



***Join us Friday night in the sale barn
for live music from Walker County!***

Trennepohl Farms Special Flush Reward:

Trennepohl Farms reserves the right to flush any female selling at the buyer's convenience. If this option is selected, Trennepohl Farms will pay the buyer \$2,000 for this right!

Auction Office Phone:

419/350-9159

Trennepohl Farms Marketing Staff:

Auction Manager:

P.O. Box 305 - Perrysburg, OH 43552

419/862-0117, office

419/350-9159, sale days

craig@primetimeagrimarketing.com

www.primetimeagrimarketing.com



Auctioneer: Ron Kreis, 740/683-3235

Sales Representatives:

Alan Sears, Sears Marketing: 970/396-7521

Kent Jaecke, Focus Marketing: 405/408-2440

Mark Murphy: 937/459-2530

Dalton Lundy: 502/727-6898

Roger Allen: 715/684-9222

Trevor Tuell: 970/630-4108

Patrick Shuter: 765/208-2424

Chance Ujadowski, 920/740-7536

Buddy Robertson: 580/747-7000

Feel free to contact any of these associates regarding the offering and any absentee purchasing. All buyers must be pre-registered. Please call as early as possible for best service.

Watch and Bid Live via high-speed internet at:

LiveAuctions TV

Internet Bidding Info: 937.515.1194

A high-speed connection is required to bid and pre-registration is required. The auction manager reserves the right to refuse bidding privileges without prior notice. Internet bidders are responsible for all updates and announcements. The auction will settle all bidding disputes.



Follow us @ptamn for instant auction updates

Livestock Insurance: Jamie Secondino Krieger, 812/208-0956

Trucking: Sam Harroun: 319/325-9389

*Join Us On the Farm for
Great Fun and Great Cattle!*

Serena 74Y "Lola" ... The New Foundation **Selling the Buyer's Choice of Confirmed Pregnancies from A Great Champion**



HF Serena 74Y "Lola"

SPECIAL LOT A – PREGNANCIES OF HF SERENA 74Y

PB SM 2584182 DOB: 2/08/11 1074
 ELLINGSON LEGACY M229
MR NLC UPGRADE U8676
 MS NLC MOJO S6119 B
 SS GOLDMINE L42
MISS KNOCKOUT 74T
 SLOW POKE 74R
 CE 8.1 | BW 2.5 | WW 71.8 | YW 103.2 | M 25.3 | API 127.7 | TI 74.1
 For Reference Only – Donor Dam

Lot A

Lot A1 - Confirmed, unsexed pregnancy by SVF Steel Force S701
 Due to calve January 17, 2015 - Available sale day – Recipient is a crossbred cow

Lot A2 - Confirmed, unsexed pregnancy by TLLC One Eyed Jack
 Due to calve January 17, 2015 - Available sale day – Recipient is a crossbred cow

Lot A3 - Confirmed, sexed pregnancy by WS All Around
 Due to calve January 25, 2015 - Available sale day – Recipient is a crossbred cow

Lot A4 - Confirmed, sexed pregnancy by LLSF Pays to Believe ZU194
 Due to calve February 8, 2015 - Available sale day – Recipient is a crossbred cow

It is the very rare female – especially a purebred – that backs up dominant show ring performances with even greater performance in the pasture. Serena 74Y "Lola" is doing exactly that and we simply could not be more excited about what this young donor is doing for us and our partners. We are lucky enough to have several great cows in our herd but we are earnest in our intentions to build around Serena 74Y because she continues to do everything right. This spring we intend to turn out 2 sons, 1 full brother, and another impressive bull that was produced from a maternal sister to 74Y.

Serena 74Y is an across-the-board breed leader for multiple performance traits and she was Claire's AJSA Summer Classic and NAILE Grand Champion of both the Junior and Open Shows plus she was the Supreme Champion of the 2012 Indiana State Jr. Fair. Her dam is one of the most valuable females in the breed and her sire will go down as one of the most dominant Simmental bulls in history. Serena 74Y recently delivered a fancy heifer calf and is pictured here just 12 days postpartum. She is quite an animal and we are proud to highlight our 2014 offering with these exciting pregnancy options. Trust us, you will want to own a piece of this rock!

NOTE: 50% semen interest is retained by Trennepohl and Clearwater in all resulting bull calves.



See her first bull calves at Lot 19!

Donor T85...The Dam of Long Haul...She Sells!



MISS FANCY YARDLEY T85

PB SM 2413517 DOB: 3/01/07 7085

MEYER RANCH 734
 3C MACHO M450 BZ
 3C CROCUS H112 B
 WLE POWER STROKE
 MISS YARDLEY P50
 MISS YARDLEY L67

Lot 1

Sells open with a bull by Optimus Prime born 9/25/14
 CE 5.1 | BW 1.7 | WW 63.3 | YW 83.8 | M 19.3 | API 99.4 | TI 65.0

One of the great improvement and investment opportunities of the fall, we are proud to lead-off our 2014 sale with one of the most consistent cows we've ever run and her amazing bull calf – together, an amazing opportunity. This special cow has delivered fantastic results for us since we started her; and her importance has only grown with the great success of her sons and daughters. She is the dam of Long Haul, our "sold out", \$80,000 sire whose first crop has included big winners and high sellers across the country, and other favorites and young leaders like STCC Shock My Fancy, an NAILE and Hoosier Congress division winner. The consistent performance of this donor speaks for itself because you should see the studly natural bull at her side now. He is a real bonus for sure from a cow that is one of the great ones!

OWNED WITH RIST SHOW CATTLE



PREGNANCY OF MISS FANCY YARDLEY T85

Lot 1A - Confirmed, unsexed pregnancy by TLCC One Eyed Jack

Due to calve March 5, 2015 - Available sale day - Recipient is a crossbred cow

We've been dying to make this combination and we finally got to it. This should be special!

**SOLD
OUT**



PB SM 2540264 DOB: 3/20/10
CNS DREAM ON L186
STF SHOCKING DREAM SJ14
STF MISS J0114
3C MACHO M450 BZ
MISS FANCY YARDLEY T85
MISS YARDLEY P50
**His Dam
Sells as
Lot 1**
CE 14.8 | BW 0.4 | WW 66.9 | YW 91.3 | M 18.2 | API 127.6 | TI 70.6

Mark Sired
STCC Long Haul 033X

Watch for semen selling exclusively this winter at:

SimMagic on Ice – Denver, CO
Frozen Gold 14 – Columbus, OH

THANKS TO THESE MEMBERS OF THE LONG HAUL CLUB

- Yardley Cattle Company – Utah
- Donald Bangma – Tennessee
- Bill Graber – Wisconsin
- Gonsior Simmental – Nebraska
- Horstman Cattle Company – Indiana
- Phelps/Scheiderer – Ohio
- Top Hat Simmental – Utah
- Tuell Cattle – CO



6591 W County Road 625 N
Middletown, Indiana 47356

SIMMENTAL - SIMANGUS - SHORTHORN
Hay - Straw - Grain

765.620.1700 - Scott
765.620.0733 - Jeff

www.trennepohlfarms.com

Thomas Lundy, Show & Sale Cattle:
502.471.0354



*STCC Jimmy John
Sired by Long Haul*



*A top seller at the
Griswold Classic
Sired by Long Haul*



*A multiple winner
for Mitchell Smith
Sired by Long Haul*

A Fantastic Cut of Prime—Aged Cows!

Simmental and SimAngus Bred Cows and Fall Pairs



STCC MIRANDA 034X

PB SM 2540260 DOB: 3/10/10 0034

CNS DREAM ON L186
 DHF JADES DREAMWORKS
 RF BLACK JADE 950N
 TRIPLE C INVASION R47K
 TCF RHF MIRANDA U1985
 TRIPLE C CRAZY QUEEN L98

*Sells open with a heifer by Optimus Prime born 9/27/14
 CE 4.4 | BW 3.5 | WW 63.1 | YW 63.1 | M 18.6 | API 106.7 | TI 61.7*

A fantastic 4-year old with a fantastic heifer at-side, this embryo daughter of our top-selling Miranda U1985 donor that we own with Martin Livestock, IN, is one of many features that are sure to provide big rewards. The build of this young cow is ideal with powerfully correct feet and legs, supreme udder quality, and power from front to rear. This is quite a powerful pair and the calf may be more valuable than the cow... wow!

Lot 2



Miranda U1985

Join us Friday night for Cattle Viewing, Great Food, and Live Music by Walker County!

Sponsored in part by:



Brian Hannon - 219-869-8030
 Austin Wolf - 517-401-0370

RHF/DMR ATLANTA X05

3/4 SM 2537204 DOB: 1/08/10 X05

CNS DREAM ON L186
 DHF JADES DREAMWORKS
 RF BLACK JADE 950N
 AFTERSHOCK
 STCC RUBY P172
 MS BECKY

*Sells open with a heifer by Optimus Prime born 10/12/14
 CE -0.5 | BW 4.4 | WW 60.5 | YW 81.4 | M 16.5 | API 71.4 | TI 53.8*

We've got some awesome pairs to sell this year and this striking, streamlined full sister to Houston is one of several elites in the group. She is powered up and exciting — especially with the fancy Optimus Prime heifer at her side — and her brother was a big winner before joining the sire roster at Griswold Cattle, OK. This family is built around the consistency of our great Ruby P172 donor that provided us with years of premium cattle. This one is double-bred for "fancy"!



Lot 3



Houston

SS EBONYS DREAM CHILD

PB SM 2282213

DOB: 3/15/05

5049

NICHOLS LEGACY G151

CNS DREAM ON L186

CNS SHEEZA DREAM K107W

HC POWER DRIVE 88H

SOSF EBONYS JOY L-123

NJC/TJF JOY

Lot 4

Bred to calve 12/22 to Mr HOC Broker

CE 14.1 | BW 0.1 | WW 57.8 | YW 77.2 | M 23.6 | API 146.9 | TI 71.4

A direct daughter of the great SOSF Ebony's Joy L-123 foundation donor, this genetic powerhouse is equally powerful on the hoof. She is a big, balanced, extra-stout beef machine and we've got several on the way from her. She should ring the bell with Broker and many more!



Lot 4



Lot 5

STCC ROLE MODEL 014X

1/4 SM 2569696

DOB: 2/13/10

0014

EYER RANCH 734

WR ROLE MODEL 848T

WAG HAIRIETTA 9145J CAX

ANGUS

128

ANGUS

Lot 5

Bred to calve 2/22 to Yardley Utah Y361 – PE 5/23-7/25 to STCC/RHF Deputy One 016X – Safe-in-calf

CE 2.5 | BW 1.3 | WW 50.7 | YW 69.6 | M 19.7 | API 71.8 | TI 54.3

The dam of sale calves the past two years that averaged just over \$3,000 this a good-looking, hard-working Role Model daughter set up right. She can raise them right and Utah should be a nice complement to her level, attractive, fault-free form.

WHSP OAKS SWEET VICTORY 208Z

PB SM 2641536

DOB: 2/14/12

2208

CNS DREAM ON L186

SVF STEEL FORCE S701

SVF SHEEZA BEAUTY L901

O C C EMBLAZON 854E

GCF MISS ZEL'S U37

ZEIS MISS DRIVE N423

Lot 6

Bred to calve 3/10 to STCC Long Haul – PE 6/02-7/01 to JS Bulldozer 11Z – Safe-in-calf

CE 10.9 | BW 0.7 | WW 60.7 | YW 93.3 | M 16.3 | API 117.0 | TI 63.9

A big potential, young Steel Force with excellent tools and early performance. Check the unusual foot size and stoutness here, study the performance profile, and consider the great mating. The right kind!



Lot 6

Real Beef Cows that Work...Bred to Perform!



Lot 7



First Class Act

STCC 008X

AN 16735858

DOB: 3/07/10

0008

WAR COWBOY UP 3102
RIST CHUCKWAGON
DCC DIXIE ERICA 001
NORTHERN IMPROVEMENT 4480 GF
STCC NORTHERN VALOR 139S
F B F EXPLOSION VALOR 8G

Lot 7

Bred to calve 2/26 to First Class Act – PE 5/23-7/25 to STCC/RHF Deputy One 016X – Safe-in-calf

An Angus stunner with a hot calf on the way and very proven pedigree! Check this sale book and past editions for several impressive siblings – including National Champions – to this beauty that leads the way among Angus cows for width of hip and base, udder quality and more. She is the kind and she'll deliver one of the very first by our full brother to First Class!

GINSENG 606 OF 301 GP

AN 15413921

DOB: 1/03/06

159

N BAR EMULATION EXT
O C C GREAT PLAINS 943G
DIXIE ERICA OF C H 1019
RITO 9FB3 OF 5H11 FULLBACK
GINSENG 301 OF 910 FULLBACK
GINSENG 910 OF H7 1418

Lot 8

Bred to calve 2/14 to TLLC One Eyed Jack – PE 5/23-6/29 to STCC Solution 094Z – Safe-in-calf

BW 1.7 | WW 41.0 | YW 76.0 | M 21.0

Own a special family here! This impressive Great Plains x Fullback blend looks like a premium producer and she sure is. A top daughter sells here and this sweet necked, balanced purebred should get her best shot yet with Jack this spring.



Lot 8



Lot 8A

STCC MS SHERIFF 161A

3/8 SM 2771568

DOB: 5/12/13

3161

3C MACHO M450 BZ
STCC SHERIFF TAYLOR
AUNT BEA
OCC GREAT PLAINS 943G
GINSENG 606 OF 301 GP
GINSENG 301 OF 910 FULLBACK

Lot 8a

Bred to calve 2/12 to TLLC One Eyed Jack – PE 5/10-6/23 to TLLC One Eyed Jack – Safe-in-calf

CE 4.5 | BW 0.9 | WW 54.7 | YW 75.3 | M 25.6 | API 83.5 | TI 58.4

A bold, soggy beauty by "The Sheriff", this is the premium quality you can expect from her dam. This heifer reminds us a lot of the one that Griswold Cattle, OK, selected from our 2012 lineup before her first calf – by Long Haul – topped the SimAngus division of their Classic Sale at \$16,000. This is the kind that lasts and brings you back for more!

STCC MS OPIE 03W

3/8 SM 2514112

DOB: 3/23/09

9003

3C MACHO M450 BZ

STCC OPIE

AUNT BEA
OCC ANCHOR

P01

ONYX x VANITY FAIR

Bred to calve 2/14 to Yardley Utah Y361 – PE 5/31-7/23 to TLLC One Eyed Jack – Safe-in-calf

CE 3.9 | BW 1.2 | WW 43.8 | YW 52.5 | M 19.7 | API 67.1 | TI 45.2

A power-producing, lower percentage cow from our ever-lasting Vanity Fair tribe that claims more NAILE winners than nearly any you will find, a son of this cow was one of our high selling bulls in the 2014 Premium Source Bull Sale in CO. This is one interesting and productive beast. She is ideally sized with more power and more length of front. Her dam was at-side of the 2002 ACA National Champion Cow and her quality shows through here..

MISS YARDLEY X62

PB SM 2571795

DOB: 2/23/10

0062

WLE POWER STROKE

GWS EBONY'S TRADEMARK 6N

NJC EBONY ANTOINETTE
CNS DREAM ON L186

MISS YARDLEY S25

MISS YARDLEY P153

PE 5/23-7/25 to STCC/RHF Deputy One 016X – Safe-in-calf

CE 11.8 | BW 0.1 | WW 44.0 | YW 49.9 | M 16.6 | API 125.0 | TI 57.7

This Trademark/Dream On blend has been especially productive with two recent sale bulls to her credit that averaged just over \$4,000. She is long, feminine and productive with impressive calving ease and API values.

Lot 9

Lot 10

Happy Thanksgiving from Trennepohl Farms!!

On behalf of our entire family and crew we thank you for taking your time to look through our catalog, review the cattle and hopefully be a part of our 2014 Right By Design Sale – the third one on our family farm near Middletown, Indiana.

It's hard to believe that we are getting together again for this, the 3rd annual Right by Design Sale. It seems like just yesterday we were walking through the cattle and visiting with our friends and fellow cattlemen preparing for the 2nd Sale. That being said, let us stop right here and thank each one of our past and present buyers without whom NONE of this would be possible. THANK YOU! Let us also extend a warm welcome to any and all first time visitors to the 2014 Right by Design.

We thoroughly enjoy the many friends and relationships cattle have allowed us all to make. Cattle shows and cattle sales have provided us with these opportunities. These many friends will be cherished by us for years to come.

We want to give a big "shout out" to Thomas Lundy for all of his hard work and his "Simmental brain". Thomas joined us just over a year ago and we are glad he decided to drive north. He is greatly appreciated!

This set of cattle excites us because of the show ring, cow power and donor prospect possibilities. Their potential is endless! The addition of One Eyed Jack to our already strong herd bull arsenal has raised eyebrows. One Eyed Jack has a bright future in the Simmental breed and his calves are already exceeding expectations across the country.

We believe in bull power and cow power! The day we purchased HF Serena 74Y "Lola" we thought she was "for real". As it turned out, she far exceeded all expectations! There will be the opportunity to be a part of her genetics in this year's sale.

Enough about the cattle... if you know us, you know how very important our family is to us. This past August, one of our biggest supporters and helpers, our mother, passed away after a courageous six year battle with ovarian cancer. We want to remember her in a special way and there will be a chance to help support a local high school scholarship in her memory. This MAY be associated with homemade Trennepohl family pies! Be on the lookout!

Last but certainly not least, a huge thank you to each one of our extended family members for all that they do to help us each year. There is absolutely no way that this sale could ever happen without them. This includes our brother, aunts, uncles, cousins, nieces, nephews, children, grandchildren and a very special older sister to Tom, "Miss Florence".

So come out and spend your Friday afternoon and Saturday with us enjoying Trennepohl food and hospitality. It's always a great time!

Thank you in advance for giving our cattle a look.

Jeff and Karen Trennepohl
Scott and Judy Trennepohl



Elite Flush Opportunities from Our Youngest Donors!
Reputation Cow Families and Tremendous Individual Quality



Missy A3054 – The Lot 11 Donor

Lot 11

THE RIGHT TO FLUSH WLE MISSY A3054

PB SM 2743621 DOB: 1/08/13 3054

ELLINGSON LEGACY M229

MR NLC UPGRADE U8676

MS NLC MOJO S6119 B

SS GOLDMINE L42

SHAWNEE MISS 770P

NLC LG770

CE 9.7 | BW 2.0 | WW 72.1 | YW 104.3 | M 27.2 | API 125.3 | TI 76.8

For Reference Only – Donor Dam

Lot 11 – The Right to Flush WLE Missy A3054

TERMS OF THE FLUSH: The flush is guaranteed to yield not less than six (6) transferable embryos with a 1:1 split over 10. The buyer may elect to split two flush procedures and will pay 50% of hammer price sale day and is responsible for all flush and semen expense. A3054 will be available for flushing in late April 2015 or after. Guarantee is void if sexed semen is used.

Red-hot and proven genetics from the ever-consistent Shawnee Miss 770P, here is a great first flush opportunity fresh off the tanbark. The super-impressive donor here is a maternal sister to leading young bulls like Twang and Big Deal plus WLE Uno Mas, himself a NAILE Reserve Champion and one of the leading Simmental sires in the long history of the Select Sires AI Stud. Another maternal sister was Champion Cow-Calf for Horstman Cattle Company whose 2014 Factory Direct Sale featured a \$21,000 daughter and a \$15,000 right to flush from that young 770P daughter. Circle M Farms, TX, recently purchased 770P at private treaty due to her consistent performance.

This Upgrade daughter is one of the most intriguing products of her great dam. She checks all the boxes for performance values plus she is tremendously powerful and ideally sized with everything pointed in the proper direction. Another great young Upgrade daughter to build around!

OFFERED WITH SHUTER SHOW STOCK



Uno Mas



Maxie's Image 94A – The Lot 12 Donor

Lot 12

THE RIGHT TO FLUSH PFK MAXIE'S IMAGE 94A

1/2 SM 2757164 DOB: 3/04/13 3094

DIKEMANS SURE BET

TJ SHARPER IMAGE 809U

T J MISS BANDO S27

MAXIMUS 391

ZEIS BLL MISS MAXIMUS

GCF MISS LUCKY GAL N42

CE 6.2 | BW 2.4 | WW 72.4 | YW 109.6 | M 21.3 | API 110.3 | TI 71.6

For Reference Only – Donor Dam

Lot 12 – The Right to Flush PFK Maxie's Image 94A

TERMS OF THE FLUSH: The flush is guaranteed to yield not less than six (6) transferable embryos with a 1:1 split over 10. The buyer may elect to split two flush procedures and will pay 50% of hammer price sale day and is responsible for all flush and semen expense. 94A will be available for flushing in late April 2015 or after. Guarantee is void if sexed semen is used.

Another great youngster in our outfit, Maxie's Image 94A was the top-selling heifer of The Social 2013 and she has been a popular member of our show string this past season. She is the latest of a string of high-selling progeny from the Lucky Gal N42 family that has produced National Western Champions in recent years.

Study the incredible mass and functional stoutness in this young donor whose pedigree is surely unique to so many of her likely mates. We expect her to explode in the breeding pen and, like her sisters before her, to take this successful family to even greater heights!

OFFERED WITH PHELPS FARMS

Elite Pregnancy and Embryo Packages

Big Opportunity Options from Our Best!



Miss Yardley S141 – The Lot 14 Donor



STCC Taylor Swift

Lot 14

PRODUCE OF MISS YARDLEY S141

1/2 SM 2366127 DOB: 3/14/06 6141

MR BLACK GX 6W
MEYER RANCH 734
MISS GX 728R
PAPA OPTIMA TRAVELER 411

E BAR V ANNIE 434
E B V ANNIE 370
CE -1.4 | BW 1.7 | WW 46.5 | YW 62.0 | M 18.2 | API 66.2 | TI 49.8
For Reference Only – Donor Dam

Lot 14A - Confirmed, unsexed pregnancy by CNS Pays To Dream T759
Due to calve March 5, 2015 - Available sale day – Recipient is a crossbred cow

Lot 14B – Embryos of Miss Yardley S141
Selling three embryos by Mr NLC Upgrade U8676

Lot 14C – Embryos of Miss Yardley S141
Selling three embryos by CNS Pays To Dream T759

Available sale day for shipping or pickup. A guarantee of at least one 90-day pregnancy applies when terms are followed

Treat yourself to a package of sure things from the \$56,000 top seller of our 2013 Right By Design Sale! The donor here is one of the most reliable females we've ever worked producing favorites for us like STCC Taylor Swift, our National Western and Hoosier Congress winner.

These pregnancy and embryo options blend the reliability of a great Meyer 734 daughter with the reliability and dominant performance of Upgrade and/or the eye appeal and maternal power of Pays to Dream.
OFFERED BY PROSPECT CATTLE COMPANY



Black Star Y201



CNS Black Star T702

Lot 15

PRODUCE OF LAZY H/ADKINS BLK STAR Y201

PB SM 2589875 DOB: 3/05/11 1201

CNS DREAM ON L186
SVF/NJC BUILT RIGHT N48
NJC EBONY ANTOINETTE
HC POWER DRIVE 88H

CNS BLACK STAR T702
BH MISS MT 02K
CE 11.3 | BW 1.7 | WW 57.3 | YW 83.3 | M 22.6 | API 117.3 | TI 62.3
For Reference Only – Donor Dam

Lot 15A - Confirmed, unsexed pregnancy by STCC Long Haul
Due to calve February 1, 2015 - Available sale day – Recipient is a registered Simmental cow

Lot 15B – Embryos of Lazy H/Adkins Blk Star Y201
Selling three embryos by Yardley Utah Y361

Lot 15C – Embryos of Lazy H/Adkins Blk Star Y201
Selling three heifer embryos by TLLC One Eyed Jack

Available sale day for shipping or pickup. A guarantee of at least one 90-day pregnancy applies when terms are followed.

Our Black Star and one of the new sources of future power in our program, these packages are loaded with opportunity!

Black Star Y201 was our choice as the top-selling feature of the 2011 Lazy H Game Day Sale and her dam was the recent \$88,000-valued top seller of their historic dispersion. This pedigree delivers the goods with full sisters that topped two past Lazy H sales at \$30,000 and \$34,000 with one being selected as the Reserve Champion Female of both the 2013 Ft. Worth and San Antonio Stock Shows for the Maulsby family, TX. This pedigree wins because of its unusual combination of beauty and power with flawless structure; and that is surely the case with this great youngster. Experience the power of Black Star here with great options by Long Haul, Jack, and Utah!
OFFERED WITH MCELROY SIMMENTAL

Lot 16



STF Nostalgia 155Z

EMBRYOS OF STF NOSTALGIA 155Z

PB SM 2639754 DOB: 1/11/12 2155

SVF STEEL FORCE S701
TJSC OPTIMUS PRIME 12W
KS MISS SHES SO SWEET 9
STF DOMINANCE T171

STF ONYX 451W

GCF MISS CALIENTE
CE 7.7 | BW 1.6 | WW 55.5 | YW 78.6 | M 20.2 | API 97.5 | TI 56.2
For Reference Only - Donor Dam

Lot 16A – Embryos of STF Nostalgia 155Z

Selling three embryos by SVJ Wild Fires Dream

Lot 16B – Embryos of STF Nostalgia 155Z

Selling three embryos by TLLC One Eyed Jack

Available sale day for shipping or pickup. A guarantee of at least one 90-day pregnancy applies when terms are followed.

The power of Silver Towne's great Onyx 451W blended with the appeal and versatility of our Optimus Prime, we knew this donor was destined for greatness at a young age. She started off right when she was selected as the Grand Champion Female of the 2013 Eastern Regional and the 2013 Indiana State Fair Junior Show and she has entered production right on cue. Her dam is, of course, the 2-time Louisville Champion and the foundation dam of top sellers and trendsetters like the top sellers of recent sales including several selling for more than \$20,000 with one this fall at \$57,000. Nostalgia 155Z is a real powerhouse – inside and out - and we know what she will do in production – create big rewards!



STF Onyx 451W



Jack x Bella Marie 180X



Donor 1017Y



Mr HOC Broker – The full brother to the Lot 17 and 18 Donors

EMBRYOS OF STCC BELLA MARIE 180X

PB SM 2579078 DOB: 9/28/10 0180

CNS DREAM ON L186
SVF STEEL FORCE S701
SVF SHEZA BEAUTY L901
G&L BLACKFOOT 716D

JM BF H25

YC MISS BIK B80
CE 7.5 | BW 1.7 | WW 59.7 | YW 91.7 | M 21.1 | API 116.4 | TI 60.2
For Reference Only - Donor Dam

Lot 17 – Embryos of STCC Bella Marie 180X

Selling three embryos by TLLC One Eyed Jack

Available sale day for shipping or pickup. A guarantee of at least one 90-day pregnancy applies when terms are followed.

One of two exceptional full sisters to Broker in our young donor battery, this valuable breeding piece was a winning show heifer – division winner at the AJSA Summer Classic and Reserve Grand of the 2011 Indiana State Fair – and now she is the proven dam of the spectacular Lot 26 selling here. These embryos will produce full siblings.

EMBRYOS OF STCC STELLA MARIE 1017

PB SM 2591810 DOB: 1/30/11 1017

CNS DREAM ON L186
SVF STEEL FORCE S701
SVF SHEZA BEAUTY L901
G&L BLACKFOOT 716D

JM BF H25

YC MISS BIK B80
CE 7.5 | BW 1.7 | WW 59.7 | YW 91.7 | M 21.1 | API 116.4 | TI 60.2
For Reference Only - Donor Dam

Lot 18A – Embryos of STCC Stella Marie 1017

Selling three embryos by STCC/ML First Class Act

Lot 18B – Embryos of STCC Stella Marie 1017

Selling three embryos by WAGR Upside

Available sale day for shipping or pickup. A guarantee of at least one 90-day pregnancy applies when terms are followed.

Our other full sister to Broker and another great, young donor that is just starting to shine, this female was the top selling, half-interest female of our 2012 Right By Design Sale. She is extra impressive in production and this Angus mating to First Class Act blends two of the most dominant cow families in both herd books! OFFERED WITH JARRET AND TREMBLE

Lot 17

Lot 18

Young Sire Opportunities Our Best Bull Calves from 2014!



Lot 19a



STCC JACKED UP 4070

PB SM 2886365 DOB: 3/27/14 4070

LONG`S SHEAR PLEASURE

TLLC ONE EYED JACK

LONG`S MISS SWEET TREAT

MR NLC UPGRADE U8676

HF SERENA 74Y

MISS KNOCKOUT 74T

CE 8.3 | BW 2.2 | WW 70.8 | YW 101.1 | M 25.4 | API 118.6 | TI 71.2

Selling one-half interest in the buyer's choice of Lot 19A or Lot 19B

Jack and Serena 74Y... a magical combination for sure. Check the fantastic quality of these first two sons from the first embryo crop of Serena 74Y, our NAILE, NWSS, ISF, and AJSA Champion Female that is fulfilling her destiny as the elite source of quality we expected her to become. These bulls are fantastic – each different but equally compelling – and we will be using them heavily in our program plus we think they have AI-caliber quality. This bull is going to be a fantastic female sire. His structure is absolutely flawless and you rarely find a high-performing bull calf with his degree of balance and smooth good looks. We have made the commitment to build around his incredible dam; and bulls like these are exactly the start we wanted. Get in early.



Lot 19b

STCC JACKED AROUND 4031

PB SM 2886364 DOB: 4/10/14 4031

LONG`S SHEAR PLEASURE

TLLC ONE EYED JACK

LONG`S MISS SWEET TREAT

MR NLC UPGRADE U8676

HF SERENA 74Y

MISS KNOCKOUT 74T

CE 8.3 | BW 2.2 | WW 70.8 | YW 101.1 | M 25.4 | API 118.6 | TI 71.2

Selling one-half interest in the buyer's choice of Lot 19A or Lot 19B

An absolute powerhouse performer and a cowmaker deluxe! Like his brother and their incredible donor dam, this bull holds fantastic improvement and profit potential. He is a real stud with awesome feet and leg construction plus special balance and extra power combined with leading testicle size and the masculine, eye-catching look of a real herd bull. Serena 74Y does everything right and her first sons are doing the same!



Lot 20



STCC WOMACK 4042

1/2 SM DOB: 2/08/14

4042

SVF STEEL FORCE S701

MR HOC BROKER

JM BF H25

TWIN VALLEY PRECISION E161

GRANDVIEW WOMACK MISS 7172

GRANDVIEW WOMACK MISS 1900

Selling one-half interest and possession

We are blending dominant Simmental and Angus families to bring out the best in both! This powerful Broker son is the product of a tremendous flush of the famous 7172 Donor at Womack Angus, KY, that also produced two exciting heifers we would be happy to show you.

This bull is a big backed, high performing, high capacity cow maker that will impress you with his growth, foot size, and movement. His dam was the 2003 National Junior Angus Show Grand Champion Bred-and-Owned Female and later sold one-half interest for \$17,000 as the featured Lot 1 of the 2003 Womack Sale. She was a great champion that has proven herself to produce in-kind. Siblings to this bull include an impressive array of sale toppers and champions including 74-51 Changing Times 060, the 2012 National Western Reserve Grand Champion Bull, and his flush sister, Womack Miss New Era 061, who sold for \$25,000 to Pollard Farms and 74-51 Cattle Co.



STCC SPOT ON 4027

1/2 SM 2886369 DOB: 3/16/14

4027

STF SHOCKING DREAM SJ14

STCC LONG HAUL 033X

MISS FANCY YARDLEY T85

DANNY BOY

7114

ANGUS

CE 11.4 | BW 1.5 | WW 64.8 | YW 88.8 | M 19.4 | API 117.5 | TI 66.5

Selling one-half interest and possession

Lot 21

With a pedigree and a look very similar to STCC Jimmy John, a high seller of our 2013 Right by Design Sale that went on to win the Dixie National last winter, this bull is another big bodied, SimAngus cowmaker that is filled with performance and total quality. He is one of the biggest, longest, highest capacity bulls in the crop and his straight-ahead structure and high maternal pedigree make him a great tool in any outfit.

Our Best-Ever Spring Heifer Calves!
Exceptional Simmental and SimAngus™ Options



STCC ROYAL PRIDE 4018

1/2 SM DOB: 2/10/14 4018

CNS DREAM ON L186
SVF STEEL FORCE S701
 SVF SHEZA BEAUTY L901
 SAV ROYALTY 8471
KNC ROYAL PRIDE 009
 HP ROYAL PRIDE 67

Selling the Buyer's Choice of Lots 22A or Lot 22B – Only one will sell
Sells open

Lot 22a

A gorgeous, half-blood Steel Force from a winning Angus family, this heifer is a favorite for many reasons. She is wonderfully big bodied, balanced, and attractive and she will be a real stunner at maturity. Plus, her SAV-bred dam has been a top performer and her second dam is a maternal sister to BT Crossover that was herself a Champion Cow of the Indiana Angus Preview.



STCC NICOLE 4016

1/2 SM 2886378 DOB: 2/20/14 4016

SVF STEEL FORCE S701
MR HOC BROKER
 JM BF H25
 DANNY BOY

7120
 ANGUS

Selling the Buyer's Choice of Lots 22A or Lot 22B – Only one will sell
Sells open

Lot 22b

CE 5.6 | BW 3.0 | WW 64.8 | YW 96.4 | M 20.4 | API 92.0 | TI 60.1

More of the great looking, great-bodied kind that works, you get to pick your favorite of these two front runners and we'll keep what's left; it'll still be pretty sweet. This Broker daughter is heavy-bodied and powerful from start to finish but she still looks great with a sweet shoulder/chest blend and the right kind of front end. A tough choice sells here!



Lot 23



STCC CINDERELLA 4039

PB SM 2886416 DOB: 3/27/14 4039

LONG 'S SHEAR PLEASURE
 TLCC ONE EYED JACK
 LONG 'S MISS SWEET TREAT
 CNS DREAM ON L186
 MATLOCK MISS S031
 LEIGHBERT MISS M031

Selling one-half interest - Sells open

CE 9.8 | BW 2.1 | WW 64.5 | YW 87.1 | M 23.6 | API 121.3 | TI 67.1

An awesome display of physical and genetic power from the first crop by "Jack" and the incomparable Matlock Miss S031 "Cinderella", this heifer is one of the most impressive, purebred donor candidates that we've ever produced. Her dam was a \$48,000 highlight of the Lazy H Dispersal and her sisters have been high-selling favorites as well including one at \$90,000 that went on to win the 2013 NAILE Jr. Simmental Show for Megan Reed, OH. Study the real width and muscle that this special heifer blends with an exceptional head and neck shape plus performance indicators that exceed the average of young ASA females. She is a rare one indeed!

STCC MS PRIME SWIFT 4013

5/8 SM 2886367 DOB: 2/27/14 4013

SVF STEEL FORCE S701
 TJSC OPTIMUS PRIME 12W
 KS MISS SHES SO SWEET 9
 MEYER RANCH 734
 MISS YARDLEY S141
 E BAR V ANNIE 434

Sells open

CE 1.9 | BW 1.9 | WW 56.4 | YW 80.0 | M 18.1 | API 74.6 | TI 54.1

From the \$56,000 top-seller of our 2013 Right by Design Sale, this is one massive and high-potential heifer calf! She is a maternal sister to the big-winning STCC Taylor Swift that was the \$18,000 top seller of our 2009 crop, and her donor dam is one of the most productive females we've run. This heifer explodes with quality including extreme volume, great lines, a huge hip, and fantastic hair.



PCC CARLY 4019

3/4 SM DOB: 2/18/14 4019

STF SHOCKING DREAM SJ14
 STCC LONG HAUL 033X
 MISS FANCY YARDLEY T85
 TRIPLE C OPPORTUNITY
 STCC CARLY 1031
 P302

Sells open

A sweet package from Long Haul and a dam by the National Champion, Opportunity, this three-quarter heifer is stout hipped, large boned, and great haired. OWNED BY PROSPECT CATTLE COMPANY

Lot 25



STCC BELLAS BEAUTY 4002

PB SM 2886366 DOB: 3/12/14 4002

LONG ` S SHEAR PLEASURE
 TLLC ONE EYED JACK
 LONG ` S MISS SWEET TREAT
 SVF STEEL FORCE S701

STCC BELLA MARIE 180X
 JM BF H25

*Selling one-half interest
 Sells open*

Lot 26

CE 8.2 | BW 1.7 | WW 64.4 | YW 94.9 | M 23.3 | API 112.8 | TI 64.2

Another great "Jack" heifer, this stunner was produced from one of two top-producing females we own that are full sisters to the red-hot Mr HOC Broker. This heifer has looked great from the start and she continues to add winning shape and power to an elegant and eye-catching frame. She is big and ready to rock them now!



STCC ML MISTY 4014

3/4 SM DOB: 2/18/14 4014

LONG ` S SHEAR PLEASURE
 TLLC ONE EYED JACK
 LONG ` S MISS SWEET TREAT
 CNS DREAM ON L186

RIST MISTY 816U
 HAYDEN 816 (6807 X EXT)

Sells open

Lot 27

The first crop from One Eyed Jack is as good – or better – than expected and this is some of his very best work! There is so much performance, quality, and style in the Jack babies and this one is backed by a powerful donor dam that sold one-half interest as Lot # 44 in our 2013 sale. This heifer is so good in terms of rib shape, internal dimension, bone, and real muscle plus she adds ideal length and smooth movement to an already great looking package. She is ready to win now and often!

Our Best-Ever Spring Heifer Calves!
Exceptional Simmental and SimAngus™ Options



STCC JEANNIE 4012

1/2 SM DOB: 2/13/14 4012

GCC HARD AS STEEL
YARDLEY UTAH Y361
 YARDLEY MISS T170
 WR ROLE MODEL 848T
STCC ROLE MODEL 097X
 348

Lot 28a

**Selling the Buyer's Choice of Lots 28A or Lot 28B – Only one will sell
 Sells open**

We will be making more of these Utah daughters as well; they're very impressive and consistent in our herd. This heifer is shaped like a young leader with more width and more muscle plus a softer, longer-lasting pastern and rear leg.

Lot 28A

STCC BIRDY 4005

5/8 SM DOB: 3/05/14 4005

GCC HARD AS STEEL
YARDLEY UTAH Y361
 YARDLEY MISS T170
 MAXIMUS 391
STCC SARA 109X
 CC SARA 8R

Lot 28b

**Selling the Buyer's Choice of Lots 28A or Lot 28B – Only one will sell
 Sells open**

As sharp and high potential as anything we can offer, this Utah daughter has the sweet feet, the great hair, and wonderful balance and look of a winning show piece. She looks great from every angle and will no doubt be a favorite of many this year. This is the deepest set of heifer calves we have ever produced – come see them!



Lot 28B



STCC/MA FACIA 4143

3/4 SM 2886380 DOB: 5/12/14 4143

MR NLC UPGRADE U8676
STCC SEBAGO 1010
 JM BF H25
 TJSC OPTIMUS PRIME 12W
STCC MS PRIMA FACIA 083Z
 STCC OPIE 116X

Lot 29

Sells open

CE 5.5 | BW 2.4 | WW 65.0 | YW 95.3 | M 22.5 | API 98.8 | TI 62.7

What a cow! What a show heifer! Here is the youngest heifer in the offering but one of the best as well. Her dam sold in our 2013 Right by Design Sale to Lester Ward, OH, and this heifer offers exceptional body shape with great movement and foot placement. Get her on some good Purina and watch her go!
OWNED WITH MARLES ACRES

Lot 29

STCC JACKS JEWEL 4130

PB SM 2886376

DOB: 4/15/14

4130

LONG'S SHEAR PLEASURE

TLLC ONE EYED JACK

LONG'S MISS SWEET TREAT

CNS DREAM ON L186

Y1 BDAZZLED X20

MISS YARDLEY U83

Lot 30

Sells open

CE 9.9 | BW 1.4 | WW 65.7 | W 88.0 | M 21.2 | API 122.4 | TI 66.7

A dazzler from Y1 B-Dazzled, the top-selling female of the 2010 Yardley Sale, this April heifer calf is really well built with extra foot, bone, and excellent balance. She is a maternal sister to STCC Solution, a young bull that is seeing heavy use here and at Tuell Cattle Company, CO.



Lot 30



STCC Solution



Lot 31



Hart Hollywood Queene E700

STCC JACKS DRAMA 4103

PB SM 2886377

DOB: 4/20/14

4103

LONG'S SHEAR PLEASURE

TLLC ONE EYED JACK

LONG'S MISS SWEET TREAT

TRIPLE C INVASION R47K

TRIPLE C DRAMA W75P

TRIPLE C DRAMA QUEEN P75

Lot 31

Sells open

CE 6.5 | BW 2.5 | WW 63.0 | YW 89.1 | M 21.4 | API 105.5 | TI 63.8

The biggest backed, biggest hipped calf in the crop, this is one powerful donor prospect from a great Simmental family that is backed by the world famous Hart's Hollywood Queene E700. This late April "Jack" is one of the biggest bodied females we raised this year and she offers smooth cow power that will really pay!

PSSS PRIMA BELLE 422

1/2 SM 2884171

DOB: 4/17/14

422

SVF STEEL FORCE S701

TJSC OPTIMUS PRIME 12W

KS MISS SHES SO SWEET 9

GARTEN'S 3-D

RIST BLUE BELLE 613S

WAG HAIRIETTA 9145J CAX

Lot 32

Sells open

CE 2.7 | BW 2.6 | WW 57.9 | YW 78. | M 17.3 | API 67.6 | TI 51.9

Another great youngster from Blue Belle 613S! This blaze-faced Optimus Prime daughter is one of the best haired, best boned, most eye-catching calves in the crop. Her productive dam is a direct daughter of the famed WAG Hairietta 9145J, and she produced 5 daughters that sold in our 2013 Right by Design Sale for just over a \$4,000 average.

OWNED BY SHUTER SHOW STOCK



Lot 32



Lot 33A



BC Lookout

STCC ROLLER GIRL 4009

PB SM 2886379

DOB: 2/17/14

4009

SVF STEEL FORCE S701
 FBFS WHEEL MAN 649W
 SVF STAR STRUCK S199
 WAGR UPSIDE 020X
 LAH MIGNONNE 242Z
 PRC LOOKING GOOD T94

Lot 33a

Selling the Buyer's Choice of Lots 33A or Lot 33B – Only one will sell Sells open

CE 5.0 | BW 4.2 | WW 69.0 | YW 105.0 | M 18.9 | API 111.9 | TI 68.0

Steeped in proven cow power and built like any great producer at a young age, this Wheel Man embryo heifer stems from the same great family that produced the dominant AI sire, BC Lookout. Her second dam was the high seller of the 2013 Factory Direct Sale and this youngster will make great property herself as she matures. Check the balance, extension, and eye appeal here.

STCC PRIMROSE 4024

1/2 SM

DOB: 2/25/14

4024

SVF STEEL FORCE S701
 FBFS WHEEL MAN 649W
 SVF STAR STRUCK S199
 SAV IRON MOUNTAIN 8066
 LHF PRIMROSE 221
 LHF PRIMROSE 413 OF RITO

Lot 33b

Selling the Buyer's Choice of Lots 33A or Lot 33B – Only one will sell Sells open

We only have two of these Wheel Man daughters and we want them both but we've elected to offer your choice here; one will stay to work for us. This heifer is another exciting prospect with long, lovely design and a great, balanced profile. She is extra good in her lines with a softer leg and smooth, easy movement.



Lot 33B



Lot 34

STCC COUNTRY GIRL 4050

3/4 SM 2886368

DOB: 4/12/14

4050

MR NLC UPGRADE U8676
 STCC SEBAGO 1010
 JM BF H25
 3C MACHO M450 BZ
 STCC MS 1011
 9354

Lot 34

Sells open

CE 5.5 | BW 1.7 | WW 62.8 | YW 89.3 | M 25.2 | API 102.4 | TI 66.2

A young star-headed star from Sebago, our maternal brother to Mr HOC Broker, this April heifer is loaded with quality! She is especially bold sprung and great haired with ideal muscle shape.



STCC BURN IT DOWN 4108

1/2 SM 2886373 DOB: 4/14/14 4108

MR NLC UPGRADE U8676

JS BULLDOZER 11Z

JS BURNING DESIRE 22U

TC FRANKLIN

9102

ANGUS

**Selling the Buyer's Choice of Lots 35A or Lot 35B – Only one will sell
Sells open**

Lot 35a

CE 11.9 | BW 0.0 | WW 63.4 | YW 89.3 | M 27.4 | API 126.7 | TI 73.3

From the fabulous first crop by JS Bulldozer, this very young half-blood is one of many that have us excited from his first work. This heifer is really attractive and balanced with the fault-free, feminine shape that only gets better with age. The powerful dam of Bulldozer recently sold for \$40,000 and we want to keep as many of his daughters as possible so you can only have one of these; you tell us which one.



STCC BURNING UP 4037

1/2 SM 2886371 DOB: 3/20/14 4037

MR NLC UPGRADE U8676

JS BULLDOZER 11Z

JS BURNING DESIRE 22U

TC FRANKLIN

9103

ANGUS

**Selling the Buyer's Choice of Lots 35A or Lot 35B – Only one will sell
Sells open**

Lot 35b

CE 11.4 | BW 0.6 | WW 64.8 | YW 91.4 | M 27.1 | API 124.6 | TI 71.4

See what we mean about the quality and cow potential in these Bulldozer daughters? You should see the bulls. This is a powerful first crop from a great young sire whose dam was a high-seller of the Fall 2014 season. This young donor is explosive down her top with increased total mass and width of base. What a cow she will be!

Two Great Shorthorn Calves...New in 2014!



Lot 36

STCC DIANNE 020B

SH *x4212459

DOB: 3/21/14

4020

CF TRUMP X
HD BLOODSTONE 603 ET
 NPS DESERT ROSE 004
 CCS PACER 010

STCC DANICA 200T
 WHR BLB DIANE D 5N15 ET

Sells open

Lot 36

BW 6.0 | WW 58.0 | YW 71.0 | M 17.0

Our Shorthorn offering is small but mighty and here is the first of two well-bred, great-looking purebreds that are sure to turn some heads and create lots of memories. This March heifer is an embryo daughter of STCC Danica, our 2009 National Jr. Shorthorn Show Champion Bred & Owned Female, the dam of STCC Go Daddy. Both of these Shorthorn heifers share the same second dam; this is our best family!



Lot 37

STCC DIANNE 036B

SH *x4212460

DOB: 4/25/14

4036

DF PURE GOLD 3N
SBF HENNESSY 32Z
 CF SPECIAL BRANDI 8126 ET
 HD BLOODSTONE 603 ET

STCC DIANNE X 99W BS ET
 WHR BLB DIANE D 5N15 ET

Sells open

Lot 37

BW 5.3 | WW 62.0 | YW 77.0 | M 20.0

A great Shorthorn heifer from a great family of cattle! These two purebred heifers are sure to win in many ways and both are favorites for their class and cow potential. This heifer is really great at the ground and her rib shape is outstanding. Her dam was a class winner in Louisville, and her second dam is a 2-time ASA All-American that also produced the dam of the Lot 36 heifer.

Simmental and SimAngus™ Bred Heifers

Purebred and Percentage Females Bred for Quick Returns

STCC YOGI 075A

1/2 SM 2768802 DOB: 3/01/13 3075

MR NLC UPGRADE U8676

STCC SEBAGO 1010

JM BF H25

S A V ROYALTY 8471

STCC 059X

F B F EXPLOSION VALOR 8G

Lot 38

Bred to calve 1/18 to TLLC One Eyed Jack – PE 4/20-5/31 to TLLC One Eyed Jack – Safe-in-calf

CE 8.1 | BW 0.7 | WW 60.0 | YW 91.9 | M 23.9 | API 104.4 | TI 64.4

Blending proven genetics with ideal form, this favorite heifer is especially wide chested and boldly sprung with tremendous balance and good looks. Her pedigree stacks the strength of JM BF H25, the dam of Broker, and a proven bottom-side pedigree that has produced National Champions and the AI sire, Crossover. Come early to find several young leaders like this!



Lot 38



Lot 39

STCC MARLES MISTIC 011A

PB SM 2792125 DOB: 3/24/13 3011

SVF STEEL FORCE S701

TJSC OPTIMUS PRIME 12W

KS MISS SHES SO SWEET 9

GWS EBONYS TRADEMARK 6N

LAZY H MISTIC GOLD U2

SS U-NIGHTS MISTI M706M

Lot 39

Bred to calve 1/17 to TLLC One Eyed Jack – PE 4/20-5/31 to TLLC One Eyed Jack – Safe-in-calf

CE 7.7 | BW 1.7 | WW 60.0 | YW 85.0 | M 20.4 | API 93.8 | TI 58.0

These are the best bred heifers that we've ever been able to offer, and this one is really impressive! She is extra wide and thick with real muscle down her top and into a deep twist plus her size is ideal for blending a number of ways. Her dam is the super-consistent Mistic Gold U2 donor that was herself an Indiana State Fair Champion Female before selling to Marles Acres, OH, in our 2012 sale. OWNED WITH MARLES ACRES

STCC MS SHERRIFF 007A

5/8 SM 2771574 DOB: 2/15/13 3007

3C MACHO M450 BZ

STCC SHERIFF TAYLOR

AUNT BEA

MEYER RANCH 734

MISS YARDLEY S141

E BAR V ANNIE 434

Lot 40

Bred to calve 2/12 to TLLC One Eyed Jack – PE 5/10-6/23 to TLLC One Eyed Jack – Safe-in-calf

CE -0.3 | BW 0.7 | WW 34.9 | YW 47.1 | M 26.1 | API 63.5 | TI 44.2

A showpiece from the strength of our \$58,000 high seller a year ago, this heifer is really flashy! She is a full sister to the \$18,000 STCC Taylor Swift that went on to win at the NAILE and Reserve at the NWSS in the calf divisions, and this heifer is stout hipped, great haired, and has one of the best front ends in the offering!



Lot 40



STCC BFD VANITY 3012

3/4 SM pending DOB: 2013 3012

SVF NJC BUILT RIGHT
 SVF RIGHT OF WAY U055
 SVF SHEZA FANTASY N906
 SVF STEEL FORCE S701
 STCC STEEL VANITY 1037
 STCC VANITY FLAIRE

Lot 41

Bred to calve 2/12 to STCC Long Haul – PE 5/10-6/23 to TLLC One Eyed Jack – Safe-in-calf

Take advantage of this gorgeous daughter of one of the features of our 2012 Right by Design Sale. Her dam stems from our time-tested Vanity family and she sold for a \$20,000 valuation in that offering because she can produce gems like this ideally constructed, good looking heifer by the 2011 NAILE Champion Bull, Right of Way. One of our best young donor prospects!
 OWNED WITH DONALD BANGMA

Lot 41

STCC SHEZA FANTASY 020A

PB SM 2765633 DOB: 3/10/13 3020

HTP/SVF DURACELL T52
 SS/PRS HIGH VOLTAGE 244X
 KENCO MILEY COTTONTAIL
 HC POWER DRIVE 88H
 SVF SHEZA FANTASY N906
 SVF SHEZA LADY J900

Lot 42

Bred to calve 2/12 to TLLC One Eyed Jack – PE 5/10-6/23 to TLLC One Eyed Jack – Safe-in-calf

CE 10.9 | BW 1.7 | WW 70.1 | YW 101.8 | M 20.7 | API 121.1 | TI 69.7

The right size and the right look plus Cottontail, Sheza Lady, and Power Drive genetics with a One Eyed Jack on the way; this package is hard to resist!



Lot 42

STCC 016X/7127 175A

1/2 SM 2771581 DOB: 5/10/13 3175

STCC SHERIFF TAYLOR
 STCC RHF DEPUTY ONE 016X
 RUBYS UPTOWN U858
 DANNY BOY
 STCC 7127
 ANGUS

Lot 43

Bred to calve 2/13 to TLLC One Eyed Jack – PE 5/10-6/23 to TLLC One Eyed Jack – Safe-in-calf

CE 6.2 | BW 1.5 | WW 55.8 | YW 78.3 | M 25.3 | API 96.4 | TI 60.4

We can't wait for the One Eyed Jack to arrive from this big bodied, massive Deputy One daughter whose dam is a tank of an Angus cow.

HEARTHSTONE SHAINA Z55

PB SM 2758470 DOB: 12/25/12 2055

WLE POWER STROKE
 GWS EBONYS TRADEMARK 6N
 NJC EBONY ANTOINETTE
 BOLD FUTURE
 ESJ55
 ESFI

Lot 44

Bred to calve 1/18 to TLLC One Eyed Jack – PE 4/20-5/31 to TLLC One Eyed Jack – Safe-in-calf

CE 10.1 | BW 1.9 | WW 59.0 | YW 77.9 | M 25.3 | API 109.9 | TI 63.6

A big baldy from the heart of the Hearthstone Farms program, this long bodied purebred is safe to Jack and due early for a strong return!

Can't Attend the Auction?

Call the owners or the auction staff or register to bid live at www.liveauctions.tv

LiveAuctions.TV

Internet Bidding Questions: 937.515.1194

STCC DJCC MARIE 3006

PB SM DOB: 2013 3006

STF SHOCKING DREAM SJ14
STCC LONG HAUL 033X
MISS FANCY YARDLEY T85
SVF STEEL FORCE S701

STCC STELLA MARIE 1017
JM BF H25

Lot 45

Bred to calve 2/13 to STF Royal Affair Z44M – PE 5/10-6/23 to TLLC One Eyed Jack – Safe-in-calf

Genetic power blended with ideal structure and design, this young leader is the product of a \$10,000 top seller in our 2012 sale. She blends Long Haul and Onyx genetics into a fancy package that starts with great feet, wonderful movement, and a more efficient frame score. She'll make a top performer for sure!

OWNED WITH JARRETT AND TREMBLE



B&L EMPRESS PRIDE 20A

PB SM 2717171 DOB: 3/14/13 3020

MR NLC UPGRADE U8676
JF AMERICAN PRIDE 0987X
WLE CRUISIN SUSAN T26
SVF/NJC BUILT RIGHT N48
JF EMPRESS 7050T
TRIPLE C EMPRESS N3063L

Bred to calve 2/12 to TLLC One Eyed Jack – PE 5/10-6/23 to TLLC One Eyed Jack – Safe-in-calf

CE 6.2 | BW 1.5 | WW 55.8 | YW 78.3 | M 25.3 | API 96.4 | TI 60.4

Belly, balance, and bone... this heifer has some excellent tools to build around and her pedigree is strong as well. Her dam has been a leading donor in the Janssen Farms, IA, outfit, and her full sister was a Division Champion at the 2014 Simmental Breeders' Sweepstakes. When you find purebred heifers with this type of body depth and mass you just need to own them!

Lot 46

Lot 46

STCC MS SEBAGO 131A

3/4 SM 2768805 DOB: 5/05/13 3131

MR NLC UPGRADE U8676
STCC SEBAGO 1010
JM BF H25
3C MACHO M450 BZ

STCC MS 1011
9354

Lot 47

Bred to calve 2/26 to TLLC One Eyed Jack (sexed female) – PE 5/27-6/23 to TLLC One Eyed Jack – Safe-in-calf

CE 5.9 | BW 1.8 | WW 64.6 | YW 91.8 | M 24.8 | API 103.2 | TI 64.2

Own one of our very best this year! We love the tools that this three-quarter heifer brings to the table starting with her perfect feet and bone and continuing with her massive body shape. She'll make a gorgeous cow – especially with her first Jack heifer by her side!



Lot 47

Simmental and SimAngus™ Bred Heifers

Purebred and Percentage Females Bred for Quick Returns



RCCC PAM A005

1/2 SM 2736754 DOB: 1/01/13 3005

GDAR GAME DAY 449
CONNEALY GAME CHANGER
 BLACK MARLA OF CONANGA 8135
 SHS NAVIGATOR N2B
CLRWTR RCCC INDEPENDENCE
 HPF MS INDEPENDENCE

Lot 48

Bred to calve 1/18 to STCC Long Haul – PE 4/20-5/31 to TLLC One Eyed Jack – Safe-in-calf

CE 7.2 | BW 1.4 | WW 71.6 | YW 120.7 | M 24.6 | API 106.5 | TI 71.9

A real powerhouse from start to finish! From a great family anchored by the \$51,000 HPF Ms Independence, this Angus-sired half-blood is as massive and right as they come with exceptional depth, width, power, and good looks plus a gorgeous udder on the way. She'll be a "game changer" for sure with either Long Haul or Jack!

PSSS MISS FORCE 302

PB SM 2807018 DOB: 1/16/13 302

NICHOLS LEGACY G15T
HOOKS SHEAR FORCE 38K
 C&D TRACY
 SS EBONYS GRANDMASTER
RCCC VISION Y120
 BWCC VISIONARY 120T

Lot 49

Bred to calve 2/14 to TLLC One Eyed Jack – PE 5/27-8/08 to Shear Force son – Safe-in-calf

CE 13.1 | BW 0.4 | WW 57.5 | YW 78.5 | M 25.0 | API 147.6 | TI 72.6

Fantastic API value and total quality, this massive, extra-stout heifer by Shear Force will produce a breed leader - Top 1% for API - by One Eyed Jack in her first attempt. She is square and thick and filled with the best in maternal genetics!

OWNED BY SHUTER SHOW STOCK



STCC 016X/7124 048A

1/2 SM 2771566 DOB: 3/20/13 3048

STCC SHERIFF TAYLOR
STCC RHF DEPUTY ONE 016X
 RUBYS UPTOWN U858
 DANNY BOY
STCC 7124
 ANGUS

Lot 50

Bred to calve 2/13 to FBF1 Combustible – PE 5/10-6/23 to TLLC One Eyed Jack – Safe-in-calf

CE 6.9 | BW 0.8 | WW 44.8 | YW 62.0 | M 23.3 | API 96.5 | TI 54.7

Our Deputy One daughters are some of our favorite cows and this one has always been a leader for her deep ribbed, long necked form. She is fancy and this kind has worked great with Combustible.

STCC MS SEBAGO 132A

5/8 SM 2771575 DOB: 4/20/13 3132

MR NLC UPGRADE U8676
STCC SEBAGO 1010
 JM BF H25
 STCC OPIE
STCC OPIE 075X
 7100

Lot 51

Bred to calve 2/12 to TLLC One Eyed Jack – PE 4/20-5/31 to TLLC One Eyed Jack – Safe-in-calf

CE 5.1 | BW 2.1 | WW 54.9 | YW 80.0 | M 26.7 | API 92.2 | TI 58.1

Trennepohl genetics and backed by a great cow, this younger heifer is long, level, feminine and safe to Jack, one of the hottest purebred sires in the game today!

BESH MS NAKITA ZS34

PB SM 2645532

DOB: 1/19/12

2534

MAAS TRUE DREAM 404P
BESHEARS TRUE MANT7
RAVE MISS PROWL 972J
SS GOLDMINE L42
BESHEARS NEW YEARS EVE
STF EVE MK66

Lot 52

Bred to calve 1/18 to STCC Solution 094Z – PE 4/20-5/31 to TLLC One Eyed Jack – Safe-in-calf

CE 4.6 | BW 3.0 | WW 61.5 | YW 83.4 | M 20.9 | API 106.0 | TI 60.4

A unique blend of proven Beshear Simmental genetics, this impressive, older heifer had the misfortune of losing her first pregnancy. She is squared away now and ready to deliver quick profit and she'll make a powerful cow with her great looks, tremendous udder, and abundant muscle.

PSS MISS MAGIC RAIN 308A

PB SM 2807019

DOB: 2/17/13

308

FOUNDATION 724N
K-LER MAKE IT RAIN
HCC/CSC BEYONCE
WCS FROSTY 313N
HARKERS EXACTLY MAGIC
DRAKE MAGIC TIME

Lot 53

Bred to calve 2/24 to TLLC One Eyed Jack – PE 5/27-8/08 to Shear Force son – Safe-in-calf

CE 4.0 | BW 2.7 | WW 59.4 | YW 84.3 | M 26.0 | API 91.5 | TI 58.1

A long haired, long bodied baldy from a top daughter of WCS Frosty, this heifer has excellent size and capacity. She'll have a fancy baldy by One Eyed Jack!
OWNED BY SHUTER SHOW STOCK

STCC 1010/24 156A

1/2 SM 2771582

DOB: 4/25/13

3156

MR NLC UPGRADE U8676
STCC SEBAGO 1010
JM BF H25
ANGUS

Lot 54

24

ANGUS

Bred to calve 2/12 to TLLC One Eyed Jack – PE 5/10-6/23 to TLLC One Eyed Jack – Safe-in-calf

CE 7.3 | BW 2.0 | WW 68.0 | YW 96.1 | M 26.5 | API 108.2 | TI 66.0

By Sebago, our proven maternal brother to Upgrade, this heifer is correct and feminine; the right kind to start in your program. Safe to Jack, she'll get started quickly!



HF MILLY 22A

5/8 SM 2742293

DOB: 1/18/13

3022

MR NLC UPGRADE U8676
R&R CHAMBERLAIN X744
R&R MISS TRAVELER T744
NORTHERN IMPROVEMENT 4480 GF

Lot 55

13Y

HF UNBELIEVABLE

Bred to calve 1/18 to STCC Long Haul – PE 4/20-5/31 to TLLC One Eyed Jack – Safe-in-calf

CE 11.6 | BW 1.3 | WW 68.3 | YW 99.0 | M 23.6 | API 123.2 | TI 72.0

Great maternal genetics with extra pizzazz! This Upgrade x Northern Improvement blend is going to make a gorgeous cow with her fancy, balanced profile and extra muscle.

The Productive Core of the Program
Massive, Versatile Angus Cows Bred for SimAngus™ Premiums!



STCC 7119

FEMALE DOB: 2007 7119

Sire: **DANNY BOY**
 Dam: **COMM ANGUS**

Bred to calve 2/24 to TLLC One Eyed Jack - PE 5/21-6/29 to STCC Solution 094Z - Safe-in-calf

We're missing these Danny Boy daughters already and they haven't even sold yet. This one is a favorite for her ideal size and construction plus ultimate udder quality and optimum power. She always has a good calf.

Lot 56

Lot 56

STCC 7123

FEMALE DOB: 2007 7123

Sire: **DANNY BOY**
 Dam: **COMM ANGUS**

Bred to calve 2/17 to STCC Long Haul - PE 5/21-6/29 to STCC Solution 094Z - Safe-in-calf

Maybe the biggest boned and biggest footed among these Danny Boy daughters, this cow is another high-capacity favorite. We'd be happy to take these Long Haul calves off your hands next summer.

Lot 57



Lot 57

STCC 7131

FEMALE DOB: 2007 7131

Sire: **DANNY BOY**
 Dam: **COMM ANGUS**

Bred to calve 3/10 to STCC Long Haul - PE 5/23-7/25 to STCC/RHF Deputy One 016X - Safe-in-calf

These unregistered Angus cows by Danny Boy have been behind many of our best cattle in recent years and you will love them in production - like we do. This cow is especially large boned and long bodied and is bred to produce a near-duplicate to Jimmy John and other favorites from these Danny Boy daughters.

Lot 58

STCC 7103

FEMALE DOB: 2007 7103

Sire: **DANNY BOY**
 Dam: **COMM ANGUS**

Bred to calve 2/24 to Mr HOC Broker - PE 5/21-6/29 to STCC Solution 094Z - Safe-in-calf

Another Angus tank bred to Broker, this is the kind folks always ask for. She milks well and has the round, wide shape that makes premium SimAngus progeny. Load up on as many of these as you can fit!

Lot 59

STCC 7102

FEMALE DOB: 2007 7102

Sire: **DANNY BOY**
Dam: **COMM ANGUS**

Bred to calve 2/24 to Mr HOC Broker – PE 5/21-6/29 to STCC Solution 094Z – Safe-in-calf

These 7-series cows are impressive and if you like the first you will like the last one; they're so similar. This one might be a little sharper in her angles and straighter in her lines plus she still has the big bellied, useful build of her mates. Broker should be a hot ticket here!

Lot 60



Lot 60



Lot 61

STCC 7130

FEMALE DOB: 2007 7130

Sire: **DANNY BOY**
Dam: **COMM ANGUS**

Bred to calve 2/24 to FBF1 Combustible – PE 5/21-6/29 to STCC Solution 094Z – Safe-in-calf

Another grass tank by Danny Boy, this is a favorite performer and she is bred right this year! This should be an excellent calf and this cow is a real load with max capacity — the sturdy, square, attractive build that works.

Lot 61

STCC 7126

FEMALE DOB: 2007 7126

Sire: **DANNY BOY**
Dam: **COMM ANGUS**

Bred to calve 3/10 to STCC Long Haul – PE 5/23-7/25 to STCC/RHF Deputy One 016X – Safe-in-calf

Extra depth of rib and a long, clean front make this Danny Boy daughter a favorite. Long Haul is a cinch with these Angus cows.

Lot 62

STCC 156

FEMALE DOB: 2009 156

Sire: **JUNEAU**
Dam: **ANGUS**

Bred to calve 2/14 to TLLC One Eyed Jack – PE 5/23-6/29 to STCC Solution 094Z – Safe-in-calf

This is one powerful lineup of Angus cows; and cows like this are hard to let go, especially when they're bred to bulls like these. This cow is super wide and extra stout and she can raise them well!

Lot 63



Dear Cattlemen:

Welcome Back to one of the highlights of each fall sale season, the Trennepohl's great Right by Design Sale. This proven source of quality and value continues to gain steam as buyers from previous editions realize how much bang they're getting for their buck. The program is working because the Trennepohl Team continues to multiply some of the best cattle in multiple breeds, manage them appropriately with their customers in mind, and then follow them up with sound service. These guys farm and ranch for a living; they want — and need — cattle that help pay the bills, and they know their customers do as well.

It's a pleasure to be involved with hard-working, hard-charging cattlemen like Scott and Jeff. They're always interested in improving everything about their operation, you never have to tell them to get to work, and they're never afraid to invest in something that will help them reach their goals. In short, they're great managers and they really care about what goes out the drive on your trailer. They want you to be satisfied with your purchases; it is their Number 1 goal.

This edition of the Right by Design Sale is really loaded with quality in each division. You are going to see many cattle that you can make into profit engines in your outfit, and I am proud to present them to you. I hope you can join us in Middletown. I promise it will be worth your time.

Happy Thanksgiving,
Craig Reiter, Trennepohl Farms Auction Manager
419.350.9159 – mobile phone; craig@primetimeagrimarketing.com

Commercial Sim x Angus / Angus x Sim Bred Heifers

A Great Selection of No-Nonsense Females Bred to Your Favorites!

Heifers will sell in groups of 3-4 with the bidder's choice and privilege



LOT 65A – STCC 2147

FEMALE DOB: 2012 2147
Sire: RIST CHUCKWAGON (DCC New Look x Duff 001)
Dam: STCC 0097 (ROLE MODEL)

Bred to calve 1/18 to TILC One Eyed Jack – PE 4/20-5/31 to TILC One Eyed Jack – Safe-in-calf

Like we try to make them, this one is special! Check the next-level mass and power on this great looking heifer.



LOT 65B – STCC 2150

FEMALE DOB: 2012 2150
Sire: RIST CHUCKWAGON (DCC New Look x Duff 001)
Dam: STCC 0015 (ROLE MODEL)

Bred to calve 2/13 to Mr HOC Broker – PE 5/10-6/23 to TILC One Eyed Jack – Safe-in-calf

Another beautiful beast by Chuckwagon, check the total power and cool look on this favorite. She'll hit it big with Broker and many more.



LOT 65D – STCC 2163

FEMALE DOB: 2012 2163
Sire: RIST CHUCKWAGON (DCC New Look x Duff 001)
Dam: STCC 0093 (OPE)

Bred to calve 2/13 to Mr HOC Broker – PE 5/10-6/23 to TILC One Eyed Jack – Safe-in-calf

Tremendous maternal genetics and bred to Broker for a great first calf!

LOT 65C – STCC 2152

FEMALE DOB: 2012 2152
Sire: RIST CHUCKWAGON (DCC New Look x Duff 001)
Dam: STCC 0093 (CARNEY MAN)

Bred to calve 1/17 to STCC Sherriff Taylor – PE 4/20-5/31 to TILC One Eyed Jack – Safe-in-calf

Chuckwagon is gone but he did his job leaving us with great females like this one. This heifer is so versatile, powerful, and flat good. OWNED WITH RIST SHOW CATTLE

LOT 66A – STCC 3165

FEMALE DOB: 2013 3165
Sire: SHERIFF TAYLOR (75% Simmental)
Dam: COMM ANGUS

Bred to calve 2/27 to Playmate – PE 5/27-7/23 to Optimus Prime son – Safe-in-calf

These unregistered bred heifers are really impressive. This one is a particular favorite for great combination of size, power, and balance. You'll like several in this group!

LOT 66B – STCC 2380

FEMALE DOB: 2013 2380
Sire: 3C MACHO (PB Simmental)
Dam: 6807 COW

Bred to calve 2/28 to First Class Act – PE 5/27-7/23 to Optimus Prime son – Safe-in-calf

Look for this one! She is really heavy bodied and well built. She'll make a powerful cow and will likely deliver one of the first by our exciting full brother to Dameron First Class!

LOT 66C – STCC 3085

FEMALE DOB: 2013 3085
Sire: OPTIMUS PRIME
Dam: COMM ANGUS

Bred to calve 2/27 to Carpe Diem – PE 5/27-7/23 to Optimus Prime son – Safe-in-calf

This black & white heifer is super wide and massive with a perfect frame score.



Lot 66A



Lot 67A

LOT 67A – STCC 4433 4433

FEMALE DOB: 2013
Sire: HARWOOD 209 Son
Dam: COMM ANGUS

Bred to calve 2/27 to Who Made Who – PE
5/27-7/23 to Optimus Prime son – Safe-in-calf
The Cowman's kind here! Big ribbed, easy doing, and
working on a great udder.

LOT 67B – STCC 3084 3084

FEMALE DOB: 2013
Sire: Sandeen's S.O.S. Son
Dam: COMM ANGUS

Bred to calve 2/27 to Who Made Who – PE
5/27-7/23 to Optimus Prime son – Safe-in-calf
Long bodied, good haired and really good fronted.

LOT 67C – STCC 649 649

FEMALE DOB: 2013
Sire: HARWOOD 209 Son
Dam: COMM ANGUS

Bred to calve 2/27 to Total Improvement – PE
5/27-7/23 to Optimus Prime son – Safe-in-calf



Lot 68A

LOT 68A – STCC 7100 7100

FEMALE DOB: 2013
Sire: FINAL ANSWER Son
Dam: COMM ANGUS/SIM

Bred to calve 2/27 to Playmate – PE 5/27-
7/23 to Optimus Prime son – Safe-in-calf
A real workhorse! Big bellied, chunky, and stout; she'll
make a cool cow to work with.

LOT 68B – STCC 3159 3159

FEMALE DOB: 2013
Sire: RIST CHUCKWAGON
Dam: COMM ANGUS

Bred to calve 2/27 to Who Made Who – PE
5/27-7/23 to Optimus Prime son – Safe-in-calf
We need to keep more of these Chuckwagon daughters;
they're the real deal. This one is a tank!

LOT 68C – STCC 118 118

FEMALE DOB: 2013
Sire: RIST CHUCKWAGON
Dam: COMM ANGUS

Bred to calve 2/27 to Harwood 209 – PE 5/27-
7/23 to Optimus Prime son – Safe-in-calf
A great body shape with an equally good chest and shoul-
der. Another excellent heifer.

Genetically clean, high maternal cow makers bred for quick returns!



LOT 69A – STCC 6013
FEMALE DOB: 2013 6013

Sire: FINAL ANSWER Son
Dam: COMM ANGUS/SIM

Bred to calve 2/27 to Who Made Who – PE 5/27-7/23 to Optimus Prime son – Safe-in-calf

A great looking pasture sow! Check the udder quality as well.

LOT 69B – STCC 854
FEMALE DOB: 2013 854

Sire: FINAL ANSWER Son
Dam: COMM ANGUS/SIM

Bred to calve 2/27 to Who Made Who – PE 5/27-7/23 to Optimus Prime son – Safe-in-calf

A square hipped, flashy, well made blaze.

LOT 69C – STCC 8097
FEMALE DOB: 2013 8097

Sire: FINAL ANSWER Son
Dam: COMM ANGUS/SIM

Bred to calve 2/28 to First Class Act – PE 5/27-7/23 to Optimus Prime son – Safe-in-calf

One of our best and she is bred to First Class Act! Good looking, powerful, big and real stout.

LOT 70A – STCC 004
FEMALE DOB: 2013 004

Sire: HARWOOD 209 Son
Dam: COMM ANGUS

Bred to calve 2/28 to Who Made Who – PE 5/27-7/23 to Optimus Prime son – Safe-in-calf

Very docile and very good, check the deep, long, useful build of this one.

LOT 70B – STCC 811
FEMALE DOB: 2013 811

Sire: HARWOOD 209 Son
Dam: COMM ANGUS

Bred to calve 2/28 to Total Improvement – PE 5/27-7/23 to Optimus Prime son – Safe-in-calf

You'll love these in production. They're easy to handle and their first calves will be valuable.

LOT 70C – STCC 4419
FEMALE DOB: 2013 4419

Sire: HARWOOD 209 Son
Dam: COMM ANGUS

Bred to calve 2/28 to Who Made Who – PE 5/27-7/23 to Optimus Prime son – Safe-in-calf

More of the good kind! These heifers are big bodied, double-clean, and really impressive.

LOT 71A – STCC 4136
FEMALE DOB: 2013 4136

Sire: FINAL ANSWER Son
Dam: COMM ANGUS/SIM

Bred to calve 2/28 to Carpe Diem – PE 5/27-7/23 to Optimus Prime son – Safe-in-calf

Another big ribbed, easy keeping heifer with great feet.

LOT 71B – STCC 800
FEMALE DOB: 2013 800

Sire: FINAL ANSWER Son
Dam: COMM ANGUS/SIM

Bred to calve 2/28 to First Class Act – PE 5/27-7/23 to Optimus Prime son – Safe-in-calf

Tremendous depth and muscle. One of the heaviest in the set.

LOT 71C – STCC 712
FEMALE DOB: 2013 712

Sire: FINAL ANSWER Son
Dam: COMM ANGUS/SIM

Bred to calve 2/28 to Who Made Who – PE 5/27-7/23 to Optimus Prime son – Safe-in-calf

Good necked, deep ribbed, defect-free and ready to make money!

Reference Sire Information and Semen Auction

TLLC ONE EYED JACK

PB SM 2668223 DOB: 3/04/12

15Z

REFERENCE
SIRE

A



TLLC ONE EYED JACK

HOOKS SHEAR FORCE 38K

LONG'S SHEAR PLEASURE

MCM 514R

SVF STEEL FORCE S701

LONG'S MISS SWEET TREAT

LONGS MISS SWEETS

CE 8.6 | BW 1.9 | WW 69.7 | YW 99.0 | M 25.4 | API 121.1 | TI 71.2

AI and Natural Service Sire

Largely outcross pedigree with fantastic performance in his first crop.

One of the most popular bulls in the breed today!

OWNED WITH THE ONE EYED JACK GROUP



STCC LONG HAUL 033X

STCC LONG HAUL 033X

PB SM 2540264 DOB: 3/20/10

033X

REFERENCE
SIRE

B

CNS DREAM ON L186

STF SHOCKING DREAM SJ14

STF MISS J0114

3C MACHO M450 BZ

MISS FANCY YARDLEY T85

MISS YARDLEY P50

CE 14.8 | BW 0.4 | WW 66.9 | YW 91.3 | M 18.2 | API 127.6 | TI 70.6

AI and Natural Service Sire

Fantastic consistency and overall quality. One of the very best breeding bulls we have used. His dam sells as Lot 1!

OWNED WITH YARDLEY CATTLE COMPANY AND THE LONG HAUL CLUB

STCC SHERIFF TAYLOR

3/4 SM 2398913 DOB: 3/15/07 232T

MEYER RANCH 734

3C MACHO M450 BZ

3C CROCUS H112 B

WHO MADE WHO 411F

AUNT BEA

TREE LANE BLACK MOLLY

CE -1.8 | BW 2.2 | WW 50.4 | YW 70.5 | M 27.8 | API 61.3 | TI 50.9

Deceased - AI Sire

Making his mark as a legendary sire of premium females with several sons leaving their marks now. His daughters are some of the best we've worked.

OWNED WITH ABS GLOBAL AND THE SHERIFF TAYLOR GROUP

REFERENCE
SIRE

C



STCC SHERIFF TAYLOR

STCC OPIE

3/4 SM 2398912 DOB: 3/10/07

312T

REFERENCE
SIRE

D

MEYER RANCH 734

3C MACHO M450 BZ

3C CROCUS H112 B

WHO MADE WHO 411F

AUNT BEA

TREE LANE BLACK MOLLY

CE -1.8 | BW 3.2 | WW 52.7 | YW 70.8 | M 21.8 | API 63.9 | TI 50.0

Natural Service Sire

The proven full brother to Sheriff Taylor. Another very consistent breeding bull.

JS BULLDOZER 11Z

PB SM 2649210 DOB: 2/01/12

11Z

REFERENCE
SIRE

E

ELLINGSON LEGACY M229

MR NLC UPGRADE U8676

MS NLC MOJO S6119 B

HOOKS SHEAR FORCE 38K

JS BURNING DESIRE 22U

TRIPLEC BURNING POWER L3

CE 11.2 | BW 1.5 | WW 71.6 | YW 102.9 | M 32.1 | API 145.4 | TI 78.8

Natural Service Sire

This bull is really performing well. His first calves sell here and they look great plus his mother recently sold for \$40,000 and we tried hard to own her. We are using this bull hard in ET and naturally.



STCC RHF DEPUTY ONE 016X

STCC RHF DEPUTY ONE 016X

PB SM 2540262 DOB: 4/03/10 016X

3C MACHO M450 BZ
 STCC SHERIFF TAYLOR
 AUNT BEA
 HTP SVF IN DEW TIME

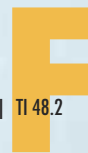
RUBYS UPTOWN U858

DOUBLE R SHESTHEONE K18
 CE 4.8 | BW 0.1 | WW 36.1 | YW 51.4 | M 27.2 | API 87.7 | TI 48.2

Natural Service Sire

A great female sire. Several of his daughters rank among our best.

**REFERENCE
SIRE**



TJSC OPTIMUS PRIME 12W

TJSC OPTIMUS PRIME 12W

3/4 SM 2494970 DOB: 1/04/09 12W

CNS DREAM ON L186
 SVF STEEL FORCE S701
 SVF SHEZA BEAUTY L901
 MAXIMUS 391

KS MISS SHES SO SWEET 9

LVCC MRS PICASSO 180
 CE 5.3 | BW 2.0 | WW 66.3 | YW 97.9 | M 18.1 | API 86.4 | TI 59.1

AI Sire

One of the best Steel Force sons in the breed! This bull continues to gain steam as a great maternal sire.

OWNED WITH JONES SHOW CATTLE AND HARWOOD CATTLE COMPANY

**REFERENCE
SIRE**



WAG ROLE MODEL 848T

WAG ROLE MODEL 848T

1/2 SM 2462109 DOB: 9/08/07 848T

MR BLACK GX 6W
 MEYER RANCH 734
 MISS GX 728R
 WHO MADE WHO 411F

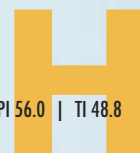
WAG HAIRIETTA 9145J CAX

ANGUS
 CE -1.3 | BW 1.7 | WW 49.9 | YW 65.0 | M 17.8 | API 56.0 | TI 48.8

AI and Natural Service Sire

A full brother to incredible females like Miss USA and Miss America, this bull left us with an outstanding lineup of daughters. The producing ability of this line of cattle is legendary!

**REFERENCE
SIRE**



STCC SEBAGO 1010

PB SM 2596972 DOB: 2/23/11 010Y

REFERENCE
SIRE

ELLINGSON LEGACY M229

MR NLC UPGRADE U8676

MS NLC MOJO S6119 B

G&L BLACKFOOT 716D

JM BF H25

YC MISS BIK B80

CE 8.1 | BW 1.4 | WW 69.0 | YW 102.7 | M 29.0 | API 120.5 | TI 71.6

AI and Natural Service Sire

A maternal brother to Mr HOC Broker, this bull is exceeding even our expectations. He is seeing a lot of use here.



STCC SEBAGO 1010

YARDLEY UTAH Y361

3/4 SM 2641894 DOB: 3/05/11 Y361

REFERENCE
SIRE

SVF STEEL FORCE S701

GCC HARD AS STEEL 144W

O C C JUANADA 898L

CNS DREAM ON L186

MISS YARDLEY T170

MISS YARDLEY L21

CE 10.4 | BW 2.1 | WW 76.6 | YW 115.8 | M 4.1 | API 132.6 | TI 75.5

AI Sire

This high-selling bull is fulfilling his destiny with the arrival of his first crop. The heifers selling here are from limited use a year ago. We will be using this bull much more.

OWNED WITH YARDLEY CATTLE, WERNING RANCH, JOHN GOGGINS, HARWOOD CATTLE CO.



YARDLEY UTAH Y361

STCC/ML FIRST CLASS ACT

AN +17796905 DOB: 4/26/13 3426

REFERENCE
SIRE

EXAR LUTTON 1831

EXG RS FIRST RATE S903 R3

RAFTER S BLACKCAP P909

DAMERON PVF RAPTOR 702

DAMERON NORTHERN MISS 3114

DAMERON MISS 550

BW 3.2 | WW 59.0 | YW 107.0 | M 31.0

AI and Natural Service Sire

Our fantastic full brother to the Angus legend First Class whose semen recently sold in excess of \$10.500 per straw.

OWNED WITH MARTIN LIVESTOCK



WAG ROLE MODEL 848T

Trennepohl Farms Semen Auction

We will sell semen from some of the bulls listed above at the conclusion of the regular auction. Please see those bulls listed above and consult the auction update sheet to see what will sell.



Cindy 2014 National Western Grand Champion Female



Jacob Wattenbarger (Jeff's grandson) at this first show!



2014 AJSA National Jr. Show Reserve Grand Female



2013 Hoosier Beef Congress "Champion Ugly Christmas Sweater" Team

WHAT'S ONE *more* CALF WORTH?

BENEFITS OF CONCEPT • AID[®] IN COWS:

- Improved Conception Rates
- Better Body Condition Score
- Greater A.I. Success
- Fewer Nonproductive Cow Days
- More Eggs Per Flush



Don Cooper,
Area Sales Manager
(816) 344-5750
dcooper@biozymeinc.com

Cody Sankey,
Area Sales Manager
(816) 344-5768
csankey@biozymeinc.com

Visit www.vitaferm.com to find a dealer near you.



VitaFerm[®]
Concept-Aid[™]
with the AMAFERM[®] advantage

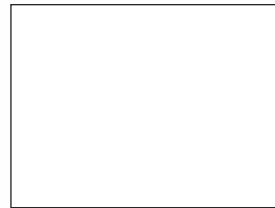


FAMILY - FARMING - STEWARDSHIP - SUCCESS



PO Box 305
Perrysburg, Ohio USA 43552
www.primetimeagrimarketing.com

DATED MATERIAL — Do Not Delay



HF Serena 74Y "Lola"
A true breed mover and a feature of this offering
Photographed 12 days postpartum