

VERSATILITY

bull sale



MARCH 1 • PIERCE, NEBRASKA



*Ranch Tough &
Competition Proven!*



**Selling 75 Tested,
Guaranteed Bulls**

ANGUS – SIMMENTAL – MAINE-ANJOU

VERSATILITY

bull sale



VERSATILITY. QUALITY. SERVICE.

Selling **75**
No-Nonsense
Beef Bulls

35 Angus
26 Simmental
7 Gateway Cowmakers
7 Exotics



ON DISPLAY NOW – FREE DELIVERY AVAILABLE
FIRST SEASON GUARANTEES – VOLUME DISCOUNTS
DISCOUNTS FOR SALE DAY LOAD OUTS – HOUSING AVAILABLE

Big Times. Big Opportunities.



LOT 1

ML/GTWY SLUGGER 411A

Reg. 87.50% AMAA Bull 441737 Polled Calved: 4/01/2013 Tag: 411A

Sire: DCC HARD DRIVE 138R (CMAC HARD CORE X NBH POLLED ENERGIZER)

Dam: GEF MISS SEDUCTION 88X (HAA WISDOM X BLACK IMPACT)

Act. BW 70

Selling full possession and two-thirds semen interest

Look to Gateway for versatility and quality to the max! This very unique, purebred sire has been so popular and impressive in our lineup that we just had to offer him here as a feature of our 2015 event even though we really want to keep him. Huge bodied, low BW Maines like Slugger are so hard to find and they lead to so many great rewards that we know that the future of this bull is so bright. His donor dam is a maternal sister to the top-producing sire, GEF Open Bar, and she has delivered big hits like a \$20,500 full sister to this bull whose unique pedigree makes him a great compliment to so many potential mates. If you saw Slugger in Denver or anywhere else, then you know his blend of frame score, body, balance, and style are extra rare and you know his future is very bright!

Slugger...A Modern Maine Like No Other.
Calving Ease. Fleshing Ability. Impeccable Design.



Albion and Pierce, Nebraska

Auction held in Pierce, Nebraska – See page 5 for details



Kevin, Laura, Brenna & Brylie Benes

Cell: 402-741-1419

Home: 402-329-4140

Mark, Aliscia, Braden, Brant, Brogan, Brielle & Brinklee Benes

Cell: 402-741-0380 - Home: 402-395-6227



**Herbolsheimer
Angus**

Mark & Brian
Herbolsheimer



**Brian and Mary
Herbolsheimer**

Brian cell: 402-649-7449



GUEST CONSIGNOR:
Windy Ridge Simmentals

Tom and Kristi Rathje • 402-643-9240

**Preview Videos of Every Bull Selling
After February 19 at
www.gatewaygenetics.com!**



Versatility+

BULL SALE

Sunday, March 1 – 2 pm CST - Pierce, Nebraska

15 minutes north of Norfolk, NE off Highway 81

Sale Location: 85218 550 Ave, Pierce, Nebraska 68767

Driving Directions to the Sale:

From Norfolk, NE (15 miles from sale site): Take Hwy 81 North out of Norfolk. Take Hwy 13 West into Hadar. Continue on Hwy 13 into Pierce. Turn Left on 1st Street and continue 1 mile.

From Yankton, SD (50 miles from sale site): Take Hwy 81 South to Hwy 98. Take Hwy 98 West into Pierce. Continue West until you come to a stop sign (Hwy 13). Turn South onto Hwy 13. (Hwy 13 will curve to the East). Continue three blocks. Turn Right on 1st Street and continue 1 mile.

Nearby Lodging:

Hampton Inn, Norfolk: 402-379-3585

Norfolk Lodge & Suites, Norfolk: 888-355-0553

Sale Day Phones:

Auction Manager: 419-350-9159

Mark Benes: 402-741-0380

Kevin Benes: 402-741-1419

Brian Herbolsheimer: 402-649-7449

Join Us For Lunch Prior to the Auction!

**The Cattle Are
On Display
Now...Stop In
Anytime!**



Marketing Staff:

Auction Manager:

Craig M. Reiter & Associates
P.O. Box 305 - Perrysburg, Ohio 43552
419/862-0117, office phone
419/350-9159, sale days
craig@primetimeagrimarketing.com



Livestock Press:

Randy Rasby, Livestock Plus.....308/539-6195
Chris Beutler, Midwest Messenger ..402/380-8244
Kent Jaecke, PrimeTIME, Inc.405/408-2440

Auctioneer: Ron Kreis 740/683-3235

Additional Auction Contacts:

Norm Reynoldson:	Mike Rist:	Quintin Smola:
402-741-0800	765-437-1665	402-641-3273
Nate Jelinek:	Craig Gana:	John Sachau:
402-270-2680	402-430-2526	712-267-2200



Powerful Simmental Sires from Elite Dams!



LOT 2 GTWY BROKER A001

50% SIMMENTAL BULL DOB: 10/05/13 TAG: A001

Sire: MR HOC BROKER
Dam: WAG HAIRIETTA 9145J (WHO MADE WHO)

Act. BW 96 | Act. WW 690



LOT 3 GTWY BROKER A002

50% SIMMENTAL BULL DOB: 10/09/13 TAG: A002

Sire: MR HOC BROKER
Dam: WAG HAIRIETTA 9145J (WHO MADE WHO)

Act. BW 90 | Act. WW 675



LOT 4 GTWY BROKER A003

50% SIMMENTAL BULL DOB: 9/30/13 TAG: A003

Sire: MR HOC BROKER
Dam: WAG HAIRIETTA 9145J (WHO MADE WHO)

Act. BW 94 | Act. WW 705

Three fantastic Broker x WAG Harietta 9145J full brothers! It's hard to beat the quality and potential of these exciting full brothers to two of the toughest and most successful heifers in the game now; their flush mates shown by Clayton Main, IN, and Stewart Skiles, TX, have been selected as Champion or Reserve Overall in each of their appearances including selections as the Supreme Champion of the Hoosier Congress and the Kansas Beef Expo, Grand Champion of the National Western SimAngus Show, Reserve Supreme of the Keystone International, and Grand Overall at the Scarlet & Gray/AGS Showdown. These bulls each have tremendous improvement potential and are ready to cover plenty of cows for you this spring. Check the enormous foot size and bone under these three that are way better headed and better necked than you might expect.



A full sister to Lots 2-4



A full sister to Lots 2-4

LOT 5 WRS BRAVO B405

PB SIMMENTAL BULL 2876643
TAG: B405

DOB: 1/12/14

SVF STEEL FORCE S701
FBFS WHEEL MAN 649W
SVF STAR STRUCK S199
HC POWER DRIVE 88H
TRIPLE C GIRLFRIEND S310
TRIPLE C GO GIRL K34G

CE 7.3 | BW 2.4 | WW 63.4 | YW 95.3 | MCE 8.4 | MM 18.2 | MWW 49.9
API 126.7 | TI 64.8
Act. BW 98 | Adj. WW 749

Limited Simmental genetics in fine form! This Wheel Man son is an embryo product of the \$12,500 Girlfriend S310 whose sons have been favorites in our last two auctions. This bull is surely the best of them with his heavy frame and leading growth plus great balance and improved rib shape. He will be one of our heaviest at sale time and he has been a leader all along. A maternal sister – shown here – was selected as the Champion Simmental Female of the 2014 SD State Fair and Reserve Champion of the 2014 Aksarben.

OWNED WITH WINDY RIDGE SIMMENTAL



Lot 5



Girlfriend S310



WRS Broke Girl



Jewel S306

LOT 6 WRS BOLD INTENTION B402

PB SIMMENTAL BULL 2876636
TAG: B402

DOB: 1/12/14

TNT TOP GUN R244
JF MILESTONE 999W
MS MAXIE LOU M112S
CNS DREAM ON L186
SVF NJC JEWEL S306
NJC BLACK JEWELL

CE 9.4 | BW 1.6 | WW 74.1 | YW 101.7 | MCE 10.3 | MM 12.1 | MWW 49.1
API 128.8 | TI 69.5

Act. BW 88 | Adj. WW 734

From Jewel S306, the dam of the #1 and #2 weaning weight Simmental bulls in our 2013 crop, this is a big, stout, fast-growing Simmental bull and a brother to several leaders. His maternal brothers brought \$7,500 and \$6,500 a year ago to Barins Cattle Company, TX, and Wagonhammer Ranch, NE, and a sister was the \$26,000 high seller of the Gonsior In the Heartland Sale. Other siblings include the \$19,000 Champion Bull of the 2014 Nebraska State Fair and the \$15,300 high seller of the 2014 NECC, and this bull will help to continue the tradition of total quality from his great donor dam!

OWNED WITH WINDY RIDGE SIMMENTAL



Lot 7 WRS BIONIC B406

PB SIMMENTAL BULL 2876639
TAG: B406

DOB: 1/22/14

CNS DREAM ON L186
SVF STEEL FORCE S701
SVF SHEZA BEAUTY L901
HC POWER DRIVE 88H
JM MISS DANA N31
JM BF H25

CE 7.1 | BW 1.0 | WW 53.7 | YW 83.7 | MCE 10.6 | MM 18.6 | MWW 45.5
API 122.7 | TI 59.7
Act. BW 96 | Adj. WW 773

The first of two big, stout, and impressive sons of Dana N31, the well-proven maternal sister to Mr HOC Broker whose daughters are averaging in excess of \$11,000 each. This Steel Force son blends dominant cow families with leading size and power. He is one of the biggest boned and thickest among the purebred bulls. His maternal brother is Lot 8.

OWNED WITH WINDY RIDGE SIMMENTAL

Lot 8 WRS BRAVE B415

PB SIMMENTAL BULL 2876646
TAG: B415

DOB: 3/09/14

SVF STEEL FORCE S701
FBF1 COMBUSTIBLE
LAZY H BURN BABY BURN R34
HC POWER DRIVE 88H
JM MISS DANA N31
JM BF H25

CE 6.2 | BW 1.8 | WW 50.4 | YW 78.9 | MCE 8.7 | MM 24.0 | MWW 49.3
API 111.3 | TI 56.3
Act. BW 97 | Adj. WW 700

A strong blend of two of the breed's most dominant donor cows, this long-bodied bull will record one of the heaviest weights at auction time among the yearling bulls. His dam has given us three years of top quality sons so far.

OWNED WITH WINDY RIDGE SIMMENTAL



Lot 8



JM Miss Dana N31



Important Sale Information:

Terms: Terms of sale are cash or good check made payable immediately after the sale and before any cattle are loaded. Invoiced (absentee) accounts are payable in full within 10 days of the sale or are subject to a 2% finance charge on the tenth day. A fee of \$50 will be assessed to all returned checks. **Liability:** All animals and merchandise will be at the buyer's risk as soon as bid off but will be cared for by the seller(s) for a reasonable amount of time during and immediately following the sale. Neither the owners, auctioneers, sale manager or other affiliated personnel may be held responsible for any accidents that may occur. PrimeTIME AgriMarketing NETWORK, Inc. acts only as an agent between buyer and seller and may not be held responsible for any livestock or merchandise. It is to be clearly understood that PrimeTIME AgriMarketing NETWORK, Inc. and its representatives act only as a medium between buyer and seller, and may not be held liable, financially or otherwise, for any failure on the part of the same to fulfill any obligations set forth in this sale or for the truth of any warranties expressed or implied. Neither does PrimeTIME AgriMarketing NETWORK, Inc. assume any financial obligations to collect or enforce the collection of monies between buyer and seller. This catalog has been prepared by the sale manager from information provided by the seller(s) and is assumed accurate as presented to us. However, PrimeTIME AgriMarketing NETWORK, Inc. will in no way guarantee age, pedigree, or reproductive status of the animals selling. All exceptions taken and adjustments made are between buyer and seller. **Health:** All animals will be accompanied by a health paper valid for interstate shipment. Buyers should make themselves aware of their respective state's health requirements prior to the sale. **Insurance:** Livestock insurance will be available at the clerk's desk through Great American Insurance. **Announcements:** Any announcements made from the sale block by the owners, auctioneer, or sale manager take precedence over any printed materials. **Sale Booklet Prepared by:** Craig M. Reiter, Sale Manager.

LOT 9 GTWY/IV 415

50% SIMMENTAL BULL 2938709 DOB: 2/19/14
TAG: B415

GW PREDESTINED 701T
GW PARAMOUNT 718Y
GW MISS PREM BEEF 545U
HART LTD 0018 4466
GTWY 135Y
REN SPECIAL DREAM S628

CE 15.1 | BW -2.9 | WW 53.1 | YW 80.4 | MCE 10.1 | MM 19.2 | MWW 45.8
API 143.1 | TI 68.9
Act. BW 82 | Adj. WW 849

Tremendous calving ease and genetic value from a young maternal sister to GTWY Authority 302A, the new ABS Global attraction that was a top seller of our 2014 sale! This bull is heavy duty in his design with increased bone and total stoutness despite his extra low BW EPD that ranks him among the best 7% of young SimAngus sires plus an API value among the best 10%.



GTWY Authority 302A

LOT 10 GTWY/IV 409

75% SIMMENTAL BULL 2938708 DOB: 2/14/14
TAG: B409

WHEATLAND BULL 131L
SAND RANCH HAND
SAND LUCKY CHARMER
SAV BRILLIANCE 8077
GTWY 109Y
REN STORMY JACK R515

CE 13.7 | BW -1.3 | WW 63.8 | YW 98.9 | MCE 12.4 | MM 24.3 | MWW 56.2
API 142.4 | TI 72.6
Act. BW 88 | Adj. WW 887

A total performance sire! This Ranch Hand x Brilliance blend is a real cowman's treasure with his fantastic performance and rugged, easy-doing design. He offers one of the most nicely balanced data profiles with exceptional API and TI values plus he is one of the stoutest, chunkiest, and deepest ribbed among the Simmental bulls.



Lot 10

LOT 11 GTWY B419

50% SIMMENTAL BULL 2940054 DOB: 3/02/14 TAG: B419

CONNEALY ANSWER 8748
WAR ANSWER Z107 X280
WAR UPGRADE X280 T129
GWS EBONYS TRADEMARK 6N
FBF1 GLORIA Z808
FBF1 GORGEOUS LADY

CE 11.5 | BW 1.7 | WW 69.9 | YW 98.3 | MCE 4.8 | MM 18.5 | MWW 53.4 | API 123.9 | TI 73.0
Act. BW 88 | Adj. WW 825

Produced from a first-calf heifer that is a maternal sister to the high-selling AI sire, FBF1/SF Ignition, this is another all-purpose beef bull with plenty of extras. He is deeper and thicker on a more efficient frame score and his explosive early performance will make him a great source of profit.



FBF1/SF Ignition



LOT 12 GTWY B420

50% SIMMENTAL BULL 2940068 DOB: 3/07/14 TAG: B420

CONNEALY ANSWER 8748
WAR ANSWER Z107 X280
WAR UPGRADE X280 T129
H3C REN BLACK JACK M223
REN TOUCH OF JACK R550
REN MIDNIGHT POTION J912

CE 10.3 | BW 0.6 | WW 63.8 | YW 99.1 | MCE 9.4 | MM 26.4 | MWW 58.3 | API 118.8 | TI 67.7
Act. BW 84 | Adj. WW 980

Another beef business leader from WAR Answer Z107 and our R550 cow, this is the #1 weaning weight SimAngus bull in the crop! His dam has delivered top gainers and top sellers in the past and her daughters have been strong sellers as well posting an average of \$4,550 each. This bull is long and thick with outstanding growth and efficient performance.

LOT 14 GTWY B425

25% SIMMENTAL BULL pending DOB: 3/20/14 TAG: B425

CONNEALY ANSWER 8748
WAR ANSWER Z107 X280
WAR UPGRADE X280 T129
WOODHILL MAINLINE
GTWY 101
REN EXTRA NICE T748

Act. BW 86 | Adj. WW 866

Produced from a young leader that is a maternal sister to two of the members of our 2014 NWSS Champion Pen of Simmental Bulls, this weaning weight leader stacks very proven genetics. He is big and high capacity with excellent testicle size.



LOT 15 GTWY B428

50% SIMMENTAL BULL 2940055 DOB: 3/26/14 TAG: B428

CONNEALY FINAL PRODUCT
WAR FINAL PRODUCT Z008 X352
WAR ADVANTAGE X352 680 1002
PVF-BF BF26 BLACK JOKER
REYNOLDSO ET JOKER 412
REYNOLDSO RED SIZZLER 774

Act. BW 94 | Adj. WW 846

Big league maternal genetics! This massive half-blood is a maternal brother to the dam of the Lot 2 and 3 bulls in our 2014 sale that averaged \$12,750 including GTWY Authority 302A that is now a featured sire at ABS Global. This bull is a deep, thick, sound female-maker with fantastic growth and maternal shape!

LOT 16 GTWY B435

50% SIMMENTAL BULL 2940056 DOB: 4/07/14 TAG: B435

CONNEALY FINAL PRODUCT
WAR FINAL PRODUCT Z008 X352
WAR ADVANTAGE X352 680 1002
H3C REN BLACK JACK M223
REN FOXY LADY W926
REYNOLDSO BLK MAGIC 313

Act. BW 78 | Adj. WW 789

Another stout son of the W296 cow, this massive cow-maker is a maternal brother to the \$9,500 bull that Elk Meadows Ranch, ID, selected from our 2012 lineup. This calving ease and growth leader is especially heavy, long, and deep yet still very good in his chest and excellent in his total construction.



Stout Half-Blood Sons of Mr HOC Broker!

LOT 17 GTWY BROKER B887

50% SIMMENTAL BULL DOB: 2/10/14 TAG: B887

Sire: MR HOC BROKER
Dam: ANGUS

Act. BW 87 | Adj. WW 718

A tremendous half-blood son of the dominant Simmental sire, Broker, this bull puts it all together! He is extra deep and good headed with a thicker, more versatile, and higher-premium design that should lead to plenty of extra income from his progeny.



Lot 17



Lot 18

LOT 18 GTWY/HERB BROKER B260

50% SIMMENTAL BULL DOB: 2/15/14 TAG: B260

Sire: MR HOC BROKER
Dam: WAR DUKE U260 49 3129 (RBM DUKE 49 X WAR MIDLAND 3129 9285)

Act. BW 86 | Adj. WW 714

Maybe the softest ribbed and deepest among these Broker sons, this bull is another great-footed, big-legged leader. He moves great and with extra shape and power. He'll make a very impressive mature bull and his daughters should be gold!



Lot 19

LOT 19 GTWY BROKER B9151

50% SIMMENTAL BULL DOB: 2/02/14 TAG: B9151

Sire: MR HOC BROKER
Dam: E&B LADY 5096 MIDLAND 9151 (A&B MIDLAND 5096 x E&B 3133 NEW DESIGN 606)

Act. BW 89 | Adj. WW 721

This is a stout set of Broker sons and this perfect-structured half-blood is a real leader. He is great at the ground with tremendous depth and total capacity for upgraded muscle and fleshing ability.



Lot 20

LOT 20 GTWY BROKER B45

50% SIMMENTAL BULL DOB: 2/15/14 TAG: B45

Sire: MR HOC BROKER
Dam: ANGUS

Act. BW 92 | Adj. WW 701

Another deep, thick Broker son, this half-blood takes the prize for immense bone and foot size. He is a real brute with outstanding thickness and extra size. Use him for pounds, added stoutness, and premium good looks.



LOT 21 GTWY/HERB CENTER STAGE B003

50% SIMMENTAL BULL DOB: 2/07/14 TAG: B003
Sire: CENTER STAGE (STAR POWER X WAG HAIRIETTA 9145J)
Dam: 3C MACHO X HSAF BANDO 1961
Act. BW 72 | Adj. WW 687

One of two impressive twin brothers from our winning Macho daughter that has become a beautiful donor cow for us, this bull is a stout, attractive baldy. He should make a premium sire with his excellent balance and spot-on structure plus his winning pedigree that is built around two of our best females!

LOT 22 GTWY/HERB CENTER STAGE B5161

50% SIMMENTAL BULL DOB: 2/07/14 TAG: B5161
Sire: CENTER STAGE (STAR POWER X WAG HAIRIETTA 9145J)
Dam: 3C MACHO X HSAF BANDO 1961
Act. BW 60 | Adj. WW 687

The twin brother to Lot 21, this bull also looks like a top female sire. He is square and thick in his design with great feet and more moderate and attractive shape and size.

LOT 24 GTWY/HERB PILGRIM B134

50% SIMMENTAL BULL DOB: 3/04/14 TAG: B134
Sire: WS PILGRIM
Dam: WAR EFFICIENT X134 9243 (CAR EFFICIENT 534 x WAR ADVANTAGE 9243 5196)
Act. BW 90 | Adj. WW 690

A deeper, thicker half-blood by the now-proven sire, Pilgrim, this bull should work great to add valuable fleshing ability and maternal quality like extra depth and substance.

LOT 23 GTWY SHEAR PLEASURE B202

75% SIMMENTAL BULL DOB: 2/01/14 TAG: B202
Sire: SHEAR PLEASURE SON
Dam: SAND RANCH HAND X SIMMENTAL
Act. BW 80 | Adj. WW 710

Produced from a first-calf heifer, this big, long baldy recorded a strong actual weaning weight and has the size and stoutness to add growth and muscle while keeping birth weights in line.

LOT 25 GTWY B408

50% SIMMENTAL BULL pending DOB: 2/11/14 TAG: B408
ASHW WHO DA MAN
I DA MAN
HEAT SEEKER x SULL 6651
GCF CHALLENGER
GTWY 131
REN SASSY THING T716
Act. BW 85 | Adj. WW 778

Here is the big-boned maternal brother to Brilliance that Mike Waid, SD, selected from our 2014 offering. This bull is all-clean by pedigree from a young cow that is 2-for-2 when it comes to producing top performing sons.

LOT 26 GTWY 483

50% SIMMENTAL BULL pending DOB: 3/14/14 TAG: E20 83
MR NLC UPGRADE U8676
WRS CHAIRMAN Z229
SS BABYS BREATH P035
OCC LEGEND SON
GTWY 183
WAR HALL OF FAME
Act. BW 88 | Adj. WW 754

The first of two half-blood sons of Chairman Z229, a top pick from our 2013 bull sale, this bull is long, growthy, and rugged. He has one of the bigger, deeper hips in the set with excellent foot and bone size.

LOT 27 GTWY 440

50% SIMMENTAL BULL pending DOB: 3/19/14 TAG: 977
MR NLC UPGRADE U8676
WRS CHAIRMAN Z229
SS BABYS BREATH P035
OCC LEGEND SON
GTWY 40
PRIME CUT
Act. BW 80 | Adj. WW 782

A long-bodied, big-boned half-blood with a strong maternal pedigree. Expect milk, muscle, and fleshing ability from this bull.

GATEWAY
GENETICS

Simmental Leaders from Gateway



2014 National Western Stock Show
Grand Champion
Pen of Simmental Bulls

2014 National Western
Stock Show
Grand Champion
Pen of SimAngus Bulls



VERSATILITY +



GTWY Authority 302A - Sold in our 2014 sale to
ABS Global



Real Steel - Sold in our 2013 sale to Swanson Farms, IA

Registered Angus Bulls – VERSATILITY+

Calving Ease Cow Makers from the Best of the Crop!



ANGUS BULL 17934181 DOB: 2/20/14
TAG: 509B

SAV FINAL ANSWER 0035
SAV PIONEER 7301
SAV BLACKBIRD 5297
CAR EFFICIENT 534
POHLMANS BARBARA 427 1 10
POHLMANS BARBARA 358 281 04
CED 6.0 | BW 1.7 | WW 57.0 | YW 103.0 | M 28.0
Act. BW 78 | Adj. WW 758

LOT **30** **ANA PIONEER 509B**

A real cow maker by Pioneer! This low BW, high-growth sire is backed by a top-performing Pohlman Angus dam that ranks with our best. This impressive bull blends massive depth and length of body with great testicle size and total performance. He is a powerhouse and he has looked great from the start.



ANGUS BULL 17796886 DOB: 8/26/13
TAG: 3798

SAV FINAL ANSWER 0035
COLEMAN REGIS 904
COLEMAN DONNA 714
SAV 8180 TRAVELER 004
COLEMAN EVERELDA ENTENSE 798
COLEMAN EVERELDA ENTENSE 422
CED 9.0 | BW 1.3 | WW 49.0 | YW 85.0 | M 22.0
Act. BW 78 | Adj. WW 861

LOT **31** **RF MR REGIS 3798**

Get some good work done early with this fall yearling son of Regis and one of the top new cows we acquired from our purchase of the LARGER, LLC Angus herd last spring. This low BW sire blends calving ease with plenty of performance and is especially attractive and complete. His dam has produced two previous herd sires and this powerful favorite is the best of the lot!

LOT 32 GTWY COMPLEMENT B788

ANGUS BULL pending DOB: 2/12/14 TAG: B788

BASIN FRANCHISE P142

EF COMPLEMENT 8088

EF EVERELDA ENTENSE 6117

HCC 1407 NEW DESIGN 4004

MOLITOR 4004 ERICA 469-788

MOLITOR 9511 ERICA 103-469

CED 16.0 | BW -0.8 | WW 49.0 | YW 93.0 | M 24.0

Act. BW 79 | Adj. WW 804

Extreme calving ease and total quality! This deep, loose, powerhouse ranks in the extreme Top 1% of young Angus sires for CED with BWEPP among the best 6% and more than 800 lbs of weaning performance. He is extra stout and rugged with a great turn to his top and plenty down low as well. A real beef bull!



Lot 32



Lot 33

LOT 33 GTWY CONSENSUS B9036

ANGUS BULL 18040831 DOB: 2/03/14 TAG: B9036

CONNEALY CONSENSUS

CONNEALY CONSENSUS 7229

BLUE LILLY OF CONANGA 16

STEVENSON MONEYMAKER R185

SANDPOINT BLACKCAP 9036

SANDPOINT BLACKCAP 6770

CED 4.0 | BW 2.0 | WW 55.0 | YW 90.0 | M 22.0

Act. BW 80 | Adj. WW 761

Leading performance and great looks from the muscle and \$B king, Consensus 7229! This rugged favorite is one of the stoutest and thickest among the Angus bulls and he is still very athletic and correct with an easy doing shape and more efficient size. Look for him to add pounds and total quality!

LOT 34 HERB IRON MOUNTAIN B1034

ANGUS BULL 18035971 DOB: 2/21/14 TAG: B1034

TC GRIDIRON 258

SAV IRON MOUNTAIN 8066

SAV MADAME PRIDE 3249

RITO REVENUE 5M2 OF 2536 PRE

HERB MISS REVENUE 1034

WAR HALL FAME 2034 0138

CED 7.0 | BW 2.0 | WW 51.0 | YW 90.0 | M 12.0

Act. BW 78 | Adj. WW 826

A great all-around Angus bull from one of our best young cows, this bull will impress you with his powerful body shape and excellent build. He has performed with the best of the crop since birth and will be one of the most massive and muscular Angus bulls on sale day. A maternal brother brought \$4,400 to Greg Vilwok, NE, a year ago.



Lot 34



LOT 35 HERB UPGRADE B081 T150

ANGUS BULL 18023982 DOB: 3/15/14 TAG: B081

SITZ UPWARD 307R
STYLES UPGRADE J59
PLAINVIEW LASSIE 71B
OCC EMBLAZON 854E
LIMESTONE PURE PRIDE T150
CAF PURE PRIDE EXT 99

CED 10.0 | BW 1.9 | WW 53.0 | YW 91.0 | M 23.0
Act. BW 80 | Adj. WW 825

From the embryo program and our great T150 donor whose three sons averaged \$4,600 a year ago, note the leading CED value of this big middled favorite that is sure to make a stout sire. Like his brothers, this bull has an excellent total design with more power and a maternal pedigree that will improve any program.

LOT 36 HERB MAINLINE B033 2020

ANGUS BULL 18035970 DOB: 3/04/14 TAG: B033

CONNEALY DANNY BOY
WOODHILL MAINLINE
WOODHILL BLACKBIRD 1288-138K
CONNEALY FOREFRONT
WAR FOREFRONT 2020 0015
WAR ADVANTAGE 0015 8004

CED 10.0 | BW -0.2 | WW 55.0 | YW 92.0 | M 17.0
Act. BW 70 | Adj. WW 896

Tremendous calving ease and explosive performance from a full brother to our 2014 leadoff Angus sire that brought \$5,500 to Carl Sholting, NE, this bull is exceptional in terms of total design. His foot placement and profile are outstanding and he blends a low 70 lb BW with one of the heaviest weaning numbers in the crop. We get nothing but quality from his donor dam that also gave us a \$4,400 son a year ago to Steve McKay, NE.



LOT 37 HERB IN LINE B254 Z254

ANGUS BULL 18038554 DOB: 3/13/14 TAG: B254

WOODHILL MAINLINE
HERB IN LINE 0034
WAR HALL FAME 2034 0138
SAV FINAL ANSWER 0035
HERB FINAL ANSWER 2254Z
WAR ALL AROUND W154 2138

CED 9.0 | BW -0.7 | WW 56.0 | YW 93 | M 15.0
Act. BW 65 | Adj. WW 733

A great calving ease prospect from a favorite first-calf heifer! This ultra-low BW bull comes in a softer, fuller package with excellent feet and fleshing ability.

LOT 38 GTWY/HERB FRONTMAN B361

ANGUS BULL 18040826 DOB: 3/27/14 TAG: B361

KESSLERS FRONTMAN R001
WAR FRONTMAN Y029 W214
WAR ADVANTAGE W214 680 S102
MOGCK TRAVELER 004 684
WAR TRAVELER X361 004 4112
WAR MIDLAND 4112 1113

CED 7.0 | BW 1.3 | WW 52.0 | YW 87.0 | M 26.0
Act. BW 78 | Adj. WW 932

More of the great consistency we are getting from Frontman W214, this super complete bull is #1 among the Angus bulls for weaning performance. He has continued to perform well with added muscle and fantastic body capacity that will make him a go-to sire for pounds, maternal quality, and consistency.



LOT 39 GTWY/HERB FRONTMAN B186

ANGUS BULL 18040825 DOB: 3/15/14 TAG: B186

KESSLERS FRONTMAN R001
WAR FRONTMAN Y029 W214
WAR ADVANTAGE W214 680 S102
CONNEALY THUNDER
WAR THUNDER W186 3032
WAR NEW DESIGN 3032 878 1361

CED 7.0 | BW 0.5 | WW 42.0 | YW 87.0 | M 30.0
Act. BW 75 | Adj. WW 816

Another strong son of Frontman W214, this younger bull is a great combination of calving ease, growth, and strong good looks. He has the deeper, dense body shape and style we love from his sire with the same great feet and structure.

LOT 40 GTWY FINAL ANSWER B075

ANGUS BULL 18038604 DOB: 3/18/14 TAG: B075

SITZ TRAVELER 8180
SAV FINAL ANSWER 0035
SAV EMULOUS 8145
CAR EFFICIENT 534
WAR EFFICIENT W075 T009
WAR IN FOCUS T009 5101

CED 11.0 | BW 0.0 | WW 61.0 | YW 101.0 | M 22.0
Act. BW 78 | Adj. WW 900

A calving ease and milk specialist from Final Answer, this is the #2 Angus bull in the crop in terms of weaning performance. He will make a strong profit source and handy property with his stacked pedigree for calving ease, growth, and milk.

LOT 41 GTWY B421

ANGUS BULL pending DOB: 3/08/14 TAG: B421

CONNEALY ANSWER 8748
WAR ANSWER Z107 X280
WAR UPGRADE X280 T129
SYDGEN MANDATE 6079
WAR MANDATE Y141 U073
WAR DUKE U073 49 4000

Act. BW 68 | Adj. WW 899

Great calving ease, great weaning performance, and great looks! Check the stout performance and 68 lb BW on this well-balanced, long fronted, deep twisted bull. His largely outcross pedigree completes a valuable package here.



LOT 42 HERB IRON MOUNTAIN B076 2169

ANGUS BULL 18023983 DOB: 2/22/14 TAG: B076

TC GRIDIRON 258
SAV IRON MOUNTAIN 8066
SAV MADAME PRIDE 3249
BON VIEW NEW DESIGN 878
WAR NEW DESIGN 2169 878 6241
WAR RANCHER 6241 2113

CED 7.0 | BW 1.5 | WW 45.0 | YW 77.0 | M 11.0
Act. BW 76 | Adj. WW 780

Iron Mountain gave us an excellent set of good-looking, calving-ease bulls like this well-made bull that should make a premium female sire. This bull is really good necked with a level, balanced profile that makes him easy to admire.

LOT 43 HERB IRON MOUNTAIN B109 Y109

ANGUS BULL 18038556 DOB: 2/18/14 TAG: B109

TC GRIDIRON 258
SAV IRON MOUNTAIN 8066
SAV MADAME PRIDE 3249
SAV FINAL ANSWER 0035
BRUSETT AMBUSH Y109
BRUSETT AMBUSH W472

CED 4.0 | BW 2.2 | WW 53.0 | YW 96.0 | M 14.0
Act. BW 75 | Adj. WW 669

Two shots of trusted calving ease and working ranch power, this low BW bull is very well built with impressive size and total construction.

This sale will be broadcast live on the internet.

DVAuction
Broadcasting Real-Time Auctions
Real time bidding & proxy bidding available.

Internet Sale Day Contact:
402/316-5460



LOT 44 HERB UPGRADE B130

ANGUS BULL pending DOB: 2/16/14 TAG: B130

SITZ UPWARD 307R
STYLES UPGRADE J59
PLAINVIEW LASSIE 71B
HSAF BANDO 1961
HERB MISS BANDO 0130
WAR BUSHWACKER 2230 8043

CED 10.0 | BW 1.4 | WW 50.0 | YW 86.0 | M 26.0
Act. BW 78 | Adj. WW 735

An all-around beef bull with calving ease and stout performance, this is another great product of Style's Upgrade. He is long, level and attractive with his square, extended build and extra muscle.

LOT 45 HERB FOCUS B589 6589

ANGUS BULL 18023980 DOB: 2/20/14 TAG: B589

SAF FOCUS OF ER
MYTTY IN FOCUS
MYTTY COUNTESS 906
STEVENSON CE DELUXE 1914
DIAMOND BLACKCAP 6589
DIAMOND BLACKCAP R205

CED 8.0 | BW 1.1 | WW 50.0 | YW 91.0 | M 26.0
Act. BW 77 | Adj. WW 739

Calving ease and muscle sell with this strong In Focus son. He ranks with the best of the crop for size and mass and he is surely one of the longest and most muscular bulls as well.

LOT 46 HERB FINAL ANSWER B298

ANGUS BULL DOB: 2/01/14 TAG: B298

SITZ TRAVELER 8180
SAV FINAL ANSWER 0035
SAV EMULOUS 8145
STYLES UPGRADE
HERB UPGRADE 298
HSAF BANDO 1961

Act. BW 70 | Adj. WW 711

A long bodied, deep ribbed, low BW ranch bull from a first-calf heifer, this big boned Final Answer son blends dominant performance and maternal sires on both ends of his pedigree.

Registered Angus Bulls – VERSATILITY+

Calving Ease Specialists!

LOT 47 HERB SOLUTION B162 0162

ANGUS BULL 18035973 DOB: 2/07/14 TAG: B162

CONNEALY ANSWER 71
CONNEALY FINAL SOLUTION
ESTE OF CONANGA 364
STYLES UPGRADE J59
HERB MISS UPGRADE 0162
WAR DIRECTION S062 4003P

CED 9.0 | BW -0.5 | WW 50.0 | YW 95.0 | M 29.0
Act. BW 70 | Adj. WW 816

Load some calving ease and cow-making power with this massive Final Solution son! He sports one of the biggest spreads among the Angus crop from a productive dam that also gave us the excellent bull that Rod Wachter, NE, selected a year ago. We strive to build more like this big-bodied cow maker that keeps calving ease and muscle in line.



LOT 48 HERB FINAL SOLUTION B280

ANGUS BULL DOB: 2/03/14 TAG: B280

WOODHILL MAINLINE
HERB IN LINE
WAR HALL FAME 2034 0138
WAR COWBOY UP
HERB COWGIRL 280
WAR ARCHITECT

Act. BW 75 | Adj. WW 727

Good looks and strong calving ease from a first-calf dam, this Final Solution son is the right kind! He starts with great feet and legs and completes the package with a smooth, no-miss pattern and surprising mass.

LOT 49 HERB IN LINE B2201

BULL DOB: 3/11/14 TAG: B2201

Sire: HERB IN LINE
(WOODHILL MAINLINE x WAR HALL FAME 2034 0138)
Dam: CONNEALY FINAL PRODUCT x SCHURRTOP MC 2500

Act. BW 65 | Act. WW 530

Tremendous calving ease and efficient performance from a first-calf dam, this unregistered Angus bull looks like a real profit source. He is sound and massive and he arrived with just a 65 lb BW!

LOT 50 HERB MAINLINE B214

ANGUS BULL DOB: 2/02/14 TAG: B214

Sire: WOODHILL MAINLINE
(CONNEALY DANNY BOY X WOODHILL BLACKBIRD 1288-138K)
Dam: SAV FINAL ANSWER 0035 x HSAF BANDO 1961

Act. BW 70 | Adj. WW 705

Another strong product of a top first-calver, this big hipped bull blends two of our favorite go-to sires. He is deep twisted and well balanced with an easy-doing, quality look.

Registered Angus Bulls – VERSATILITY+

Powerful Beef Bulls from the Breed's Best!



LOT 51 HERB SOLUTION B230 2230Z

ANGUS BULL 18035972 DOB: 2/01/14 TAG: B230

CONNEALY ANSWER 71
CONNEALY FINAL SOLUTION
ESTE OF CONANGA 364
WOODHILL MAINLINE
HERB MAINLINE 2230Z
HERB COWGIRL 9030

CED 5.0 | BW 2.4 | WW 58 | YW 100 | M 23
Act. BW 80 | Adj. WW 842

A real beef master! This massive Final Solution son is the first calf from a top-ranking Mainline daughter and he sports one of the heaviest weaning numbers in the entire crop. Aside from this leading growth this bull has awesome depth and muscle with excellent testicle size and the rugged bone of a top performer!

LOT 52 GTWY CONSENSUS B1125

ANGUS BULL 18040837 DOB: 2/05/14 TAG: B1125

CONNEALY CONSENSUS
CONNEALY CONSENSUS 7229
BLUE LILLY OF CONANGA 16
EXAR WADE IN 9738B
SANDPOINT LUCY 1125
BT LUCY 97P

CED 4.0 | BW 2.6 | WW 61.0 | YW 93.0 | M 29.0
Act. BW 80 | Adj. WW 821

Another deep, thick, high performer by Consensus 7229! This massive bull is one of our best when it comes to depth, thickness and total capacity plus he is really efficient with one of the heaviest weaning numbers in the crop.



LOT 53 GTWY SOLUTION B850

ANGUS BULL 18038601 DOB: 2/10/14 TAG: B850

MOGCK SURE SHOT
KG SOLUTION 0018
KG RITO LADY 8724
HSAF BANDO 1961
MOLITOR 1961 LASS 3503-850
JAF LASS ALLIANCE

CED 6.0 | BW -0.8 | WW 59.0 | YW 110.0 | M 29.0
Act. BW 70 | Adj. WW 785

Another stout and shapely son of KG Solution 0018, this low BW bull is heavy and thick from all angles. He is good headed and deep twisted with excellent testicle size and length of body.

LOT 54 HERB MAINLINE B733 Q733

ANGUS BULL 18038555 DOB: 2/02/14 TAG: B733

CONNEALY DANNY BOY
WOODHILL MAINLINE
WOODHILL BLACKBIRD 1288-138K
MYTTY IN FOCUS
BRUSETT ERISKAY Q733
BRUSETTS ERISKAY K130

CED 9.0 | BW 0.7 | WW 51.0 | YW 93.0 | M 18.0
Act. BW 82 | Adj. WW 690

This long bodied, flat shouldered Mainline x In Focus blend offers proven genetics with extra growth.

LOT 55 GTWY SOLUTION B785

ANGUS BULL 18038598 DOB: 2/07/14 TAG: B785

MOGCK SURE SHOT
KG SOLUTION 0018
KG RITO LADY 8724
CONNEALY DANNY BOY
MOLITOR BLACKBIRD 1050-785
MOLITOR BLACKBIRD 9021-1050

CED 7.0 | BW 0.1 | WW 58.0 | YW 99.0 | M 21.0
Act. BW 74 | Adj. WW 784

By the high-selling, maternal leader, KG Solution, this heavy-bodied bull is a leader for size and body mass. He is one of the thickest bulls in the set and arrived with just a 74 lb BW.

LOT 56 GTWY RIGHT ANSWER B795

ANGUS BULL 18038599 DOB: 2/13/14 TAG: B795

SAV FINAL ANSWER 0035
CONNEALY RIGHT ANSWER 746
HAPPY DELL OF CONANGA 262
SEDGWICKS NEWSLINE 5014
MOLITOR NEWS LANA 5011-795
MOLITOR 1333 LANA 842-5011

CED 7.0 | BW 1.4 | WW 51.0 | YW 101.0 | M 29.0
Act. BW 82 | Adj. WW 747

A docile, good headed, big backed Right Answer son that offers improved length of body and a sound, smooth design.

LOT 57 GTWY IN FOCUS B793

ANGUS BULL 18038597 DOB: 2/01/14 TAG: B793

SAF FOCUS OF ER
MYTTY IN FOCUS
MYTTY COUNTESS 906
HCC 1407 NEW DESIGN 4004
MOLITOR 4004 ERICA 5068-793
MOLITOR 9511 ERICA 238-5068

CED 10.0 | BW 0.8 | WW 46.0 | YW 84.0 | M 25.0
Act. BW 77 | Adj. WW 783

Study your videos and look for this complete beef bull that is one of the heaviest and thickest Angus bulls in the set. He is a leader for testicle size and length with one of the highest capacity shapes as well.

LOT 58 GTWY IN FOCUS B748

ANGUS BULL 18038600 DOB: 2/02/14 TAG: B748

SAF FOCUS OF ER
MYTTY IN FOCUS
MYTTY COUNTESS 906
HSAF BANDO 1961
MOLITOR BARBELLA 3006-748
MOLITOR 078 BARBELLA 0119 3006

CED 4.0 | BW 0.3 | WW 52.0 | YW 88.0 | M 25.0
Act. BW 76 | Adj. WW 781

Trusted genetics for calving ease and total performance, this In Focus x Bando 1961 blend is especially long bodied and high capacity.

LOT 59 GTWY/HERB ROCKY B017

ANGUS BULL 18038603 DOB: 2/01/14 TAG: B017

HARB ONWARD 786 JH
VAR ROCKY 80029
VERMILION LASS 0029
KCF BENNETT ARCHITECT M299
WAR ARCHITECT 5017 3212
WAR FOREFRONT 3212 3006

CED -5.0 | BW 3.3 | WW 54.0 | YW 96.0 | M 29.0
Act. BW 88 | Adj. WW 778

Load this guy for more pounds and power! He offers upgrades for length of body and muscle with some serious foot, bone, and sound running gears!

LOT 60 HERB FINAL SOLUTION B090

ANGUS BULL DOB: 2/26/14 TAG: B090

Sire: CONNEALY FINAL SOLUTION
(CONNEALY ANSWER 71 x ESTE OF CONANGA 364)
Dam: CONNEALY CHARGE ON x SAV 8180 TRAV 004

Act. BW 85 | Adj. WW 687

The kind we like to use for extra premiums and the kind that brings you back for more, this no-nonsense Angus bull is good from every angle. He is super attractive and correct with great angles and extra muscle plus the flat shoulder and clean look that insures total quality.

This sale will be broadcast live on the internet.

DVAuction
Broadcasting Real-Time Auctions
Real time bidding & proxy bidding available.

Internet Sale Day Contact:
402/316-5460



LOT 61 HERB FINAL ANSWER B2800

ANGUS BULL DOB: 2/23/14 TAG: B2800

SITZ TRAVELER 8180
SAV FINAL ANSWER 0035
SAV EMULOUS 8145
TC GRIDIRON
HERB MISS GRIDIRON 2800
CONNEALY FOREFRONT

Act. BW 75 | Adj. WW 657

A cow making machine with calving ease, muscle, and more! This Final Answer x Gridiron combination lines up favorite and proven Angus genetics in fine form with tremendous thickness and total body mass plus a pleasing design that sets him apart!

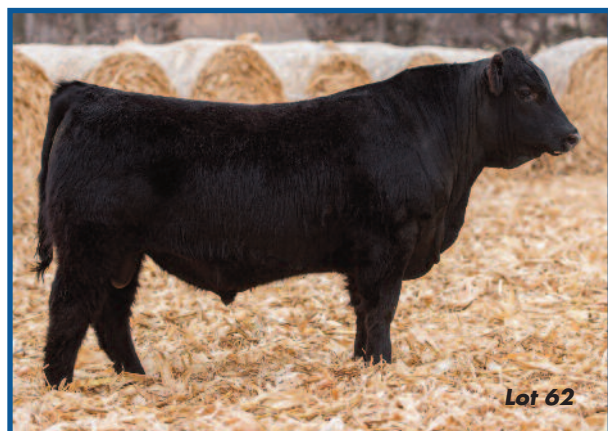
LOT 62 GTWY IN FOCUS B798

ANGUS BULL 18038602 DOB: 2/01/14 TAG: B798

SAF FOCUS OF ER
MYTTY IN FOCUS
MYTTY COUNTESS 906
SEDGWICKS NEWSLINE 5014
MOLITOR NEWS ANNIE L544-798
MOLITOR E161 ANNIE L 050-544

CED 10.0 | BW 0.4 | WW 49.0 | YW 93.0 | M 24.0
Act. BW 77 | Adj. WW 788

Another big, stout, high-performing product of Mytty In Focus, this bull will be one of the heaviest at sale time. He has grown well from the start and continues to add meat and muscle to a sound, easy-doing shape.



LOT 63 GTWY/HERB FACTOR B353

ANGUS BULL 18040828 DOB: 2/03/14 TAG: B353

SAV FINAL ANSWER 0035
VIN-MAR O'REILLY FACTOR
VIN-MAR EDELLA 2827
WOODHILL MAINLINE
WAR MAINLINE X353 S119
WAR ARCHITECT S119 2027

CED 9.0 | BW 2.1 | WW 57.0 | YW 105.0 | M 18.0
Act. BW 88 | Adj. WW 763

A big, long, impressive bull with excellent feet and leg placement and overall balance. This bull checks all the boxes for growth, toughness, and leading muscle.

LOT 64 HERB WATCH OUT B477 46P8

ANGUS BULL 18023981 DOB: 3/03/14 TAG: B477

BC LOOKOUT 7024
SILVEIRAS WATCHOUT 0514
SILVEIRAS ELBA 6546
TC RITO 416
POHLMANS BARBARA 454 08
POHLMANS BARBARA 327 343 06

CED 4.0 | BW 1.9 | WW 49.0 | YW 90.0 | M 14.0
Act. BW 79 | Adj. WW 766

Deep ribbed, good hiped, and fast growing from Watch Out!

LOT 65 HERB WATCH OUT B3

ANGUS BULL pending DOB: 2/12/14 TAG: B3

SILVEIRAS WATCHOUT 0514
HERB WATCH OUT B477 46P8
POHLMANS BARBARA 454 08 E161
4G PRECISION 187
WILSON BROS ANNA 2967
WB ANNA OF NORTHLANDER

Act. BW 87 | Act. WW 615
CED 0.0 | BW 2.6 | WW 39 | YW 71 | M 15

A powerfully-built son of Watch Out, this huge bodied bull is masculine and muscular from start to finish.

Gateway Cow-Maker Bulls

VERSATILITY+

Low Percentage Simmental x Angus Options

LOT 66 GTWY 444

25% SIMMENTAL BULL DOB: 3/18/14 TAG: 44

JF FOUNDATION 8010U
HARA'S FOUNDATION 21Y
HARA'S MISS AMERICA
RED ANGUS

GTWY 44
VERMILLION DATELINE

Act. BW 90 | Adj. WW 760

Versatility and quality to the max! The sire of this bull, Foundation 21Y, was a favorite in our 2012 offering and he is proving to be worth every penny with this first crop of calves. Several sons sell here, and this bull is a favorite in the crop for his powerful body shape, fantastic bone, and all-around great looks with added muscle.



lot 66

LOT 67 GTWY B442

25% SIMMENTAL BULL DOB: 4/25/14 TAG: B442

CONNEALY FINAL PRODUCT
WAR FINAL PRODUCT Z008 X352
WAR ADVANTAGE X352 680 1002
HART LTD

GTWY 133
REN BONANZA

Act. BW 90 | Adj. WW 956

The #2 bull in the crop for adjusted WW, this late-April bull is a powerful package! Expect him to sire quality of all kinds with his fantastic depth and compact, powerful form. He blends some of our favorite and most consistent genetics into one of the most exciting packages in our 2014 crop!



Lot 67

LOT 68 GTWY CENTER STAGE B2

25% SIMMENTAL BULL DOB: 2/20/14 TAG: B2

SVF STAR POWER
GTWY CENTER STAGE
WAG HAIRIETTA 9145J

ANGUS

Act. BW 83 | Act. WW 580

A great-looking bull from Center Stage, our winning bull that sires top sellers and great replacements, this is one of the flashiest low percentage bulls in the crop. He is really correct and attractive with leading muscle and bone.



Lot 68

LOT 69 GTWY 4083

25% SIMMENTAL BULL DOB: 3/29/14 TAG: E20 083

JF FOUNDATION 8010U
HARA'S FOUNDATION 21Y
HARA'S MISS AMERICA
OCC LEGEND SON

GTWY 83

ANGUS - COMM

Act. BW 86 | Adj. WW 735

These Foundation 21Y sons are the first from him and they are outstanding! This bull is another premium female sire with his deeper, looser, thicker build on the ideal frame score.



Lot 71

LOT 71 GTWY 4977

25% SIMMENTAL BULL DOB: 3/22/14 TAG: 977

JF FOUNDATION 8010U
HARA'S FOUNDATION 21Y
HARA'S MISS AMERICA
WAR HALL OF FAME

GTWY 977

DHD TRAVELER 6807

Act. BW 85 | Adj. WW 752

Another excellent, low-percentage option from Foundation 21Y. This bull has a very impressive pattern with impressive size, mass, and performance. With his ideal size and heavy-duty shape he should make another great female sire from this set of cowmakers!

LOT 72 GTWY CC&7 350

25% SIMMENTAL BULL DOB: 5/24/13

Sire: SYDGEN CC&7 x MYTTY IN FOCUS

Dam: GTWY 104 (SAV BRILLIANCE x PREFERRED BEEF)

Act. BW 68 | Adj. WW 806

This coming-2-year-old is a real maternal machine! He covered several heifers for us last summer and he makes handy ranch equipment with his 68 lb BW and 800+ lb WW. His dam is a very impressive young one by SAV Brilliance.



Lot 72

**Preview Videos at
gatewaygenetics.com!**

Gateway Bulls – VERSATILITY+

Maine-Cross Leaders with Power and Style

LOT 73 GTWY UNSTOPPABLE B190

BULL DOB: 2/01/14 TAG: B190

Sire: UNSTOPPABLE (Monopoly x Maine)

Dam: THE MAN x WAG HAIRIETTA 9145J (WHO MADE WHO)

Act. BW 90 | Act. WW 620

A big league "power sire" for all sorts of big rewards, this is one of many reasons you need to walk through this deep and versatile set of young sires. This guy checks all of the boxes for good looks and premium shape from his impressive size and great structure to his powerful feet, bone, and muscle. His dam is another great daughter of WAG Hairietta 9145J in our program and she blended her great style to this high-powered package!



lot 73

LOT 74 GTWY NO WORRIES B243

75% MAINE-ANJOU BULL DOB: 3/15/14 TAG: B243

Sire: NO WORRIES (I-80 x IRISH WHISKEY)

Dam: SOONER x WAG HAIRIETTA 9145J (WHO MADE WHO)

Act. BW 57 | Act. WW 550

The 57 pound product of a sweet, first-calf heifer whose dam is none other than our foundation WAG Hairietta 9145J, this bull should be just what many are looking for in a versatile, low BW sire. He has had a great look since birth and he has continued to add power to a softer, hairy, big footed package. His calving ease and high-premium blend of proven genetics is hard to match!



Lot 74

LOT 75 GTWY HARD DRIVE B036

MAINETAINER BULL DOB: 2/05/14 TAG: B036

Sire: DCC HARD DRIVE 138R

(CMAC HARD CORE X NBH POLLED ENERGIZER)

Dam: WAG HAIRIETTA 9145J (WHO MADE WHO)

Act. BW 90 | Act. WW 650

Another great Hairietta 9145J son, this maternal brother to a long list of sale toppers and AI sires is a big, stout, maternal package that will work in all sorts of schemes. He is heavy and stout all over with the classic good looks of his amazing dam that has provided an unmatched foundation for success with all sorts of sires. Look for him to leave a great set of daughters for the breeder that is smart enough to load him sale day!



lot 75



LOT 76 HERB BREATHE EASY B201

MAINTEINER BULL DOB: 2/02/14 TAG: B201

Sire: BREATHE EASY (Ali x WAG Hairietta 9145J)

Dam: GTWY PRETTY WOMAN 201 (BUILT RIGHT x ANGUS)

Act. BW 78 | Act. WW 625

Another great product of a great first-calf heifer, this is the stoutest and best bull we've gotten yet from Breathe Easy, the popular WAG Hairietta 9145J son. This guy looks like an exceptionally versatile female sire with his great hip and perfect profile plus his extended front, large testicle size, and all-clean pedigree. 78 lb BW and loads of good looks!

Lot 76

LOT 77 HERB NO WORRIES B063

BULL DOB: 2/01/14 TAG: B063

Sire: NO WORRIES (I-80 x IRISH WHISKEY)

Dam: SUPERMAN (STRICTLY BUSINESS x GTWY 9145)

Act. BW 78 | Act. WW 625

A great blend of new and proven pedigrees, this No Worries son is especially well made. His foot shape and placement are outstanding and he moves exceptionally well and with real authority. His dam is a proven donor in our outfit and she passed on her wonderful body shape and structure to this bull that is one of the heaviest and stoutest in the lineup.



Lot 77

LOT 78 HERB MERGER B075

PB MAINE-ANJOU BULL DOB: 3/01/14 TAG: B075

Sire: SLC MERGER (SOONER x THE WITCH DOCTOR)

Dam: SCHEETZ RAGGEDY ANN 4L

(DMCC BODY BUILDER x DMCC POLLEROID 29A)

Act. BW 90 | Act. WW 600

An embryo product with a unique, purebred Maine-Anjou pedigree, this long bodied, good footed bull is extra good in shoulder and head. He'll add a valuable shot of hybrid vigor and leave you with a top set of females to blend so easily with a variety of bulls.

**Stop in anytime to see the
bulls or preview videos online
after February 19 at
www.gatewaygenetics.com!**

VERSATILITY

bull sale



Thanks for Your Interest and Support!





P.O. Box 305
Perrysburg, Ohio U.S.A. 43552
www.primetimeagrimarketing.com



Dated Material — Do Not Delay

VERSATILITY

bull sale



Sunday, March 1
2 pm CST

Gateway Genetics Sales Center
Pierce, Nebraska

Selling 75 Bulls