

The  
19th



*Sale of Success*

SATURDAY, DECEMBER 28, 2013 | ZANESVILLE, OHIO USA



# Welcome Back...



...to The Sale that Pays YOU Back!

# HOLIDAY CLASSIC 2013

## The 19th Edition

Saturday, December 28, 2013 – 1:00 p.m. EST  
Muskingum Livestock Sales Company – Zanesville, Ohio  
944 Malinda Street – Zanesville, Ohio 43702



### Driving Directions:

**From Wheeling, WV and the east** take Interstate 70 west to Zanesville exit 155 Underwood St - turn right at light (Underwood St) - turn right at next light (St Rt 666 N) - exactly 3/10 of mile on left.

**From Columbus, OH and the west** take Interstate 70 east to Zanesville exit 155 7th St - turn left immediately at end of ramp Elberon Ave - at light turn left (Underwood St) - go to second light turn right (St. Rt 666 N) - exactly 3/10 of mile on left.

### Absentee Bidding:

If you would like to invest in some of the items selling here but will be unable to attend the auction, please contact the sale management staff as far ahead of the sale as possible. Absentee bidders may arrange for confidential proxy bidding or for live telephone bidding when available. All absentee bidders must register with the sale manager prior to the auction.

### Livestock Transportation:

Reliable and affordable commercial haulers will be available for local and long distance hauling. We will work to arrange loads to central points so as to minimize expense and travel time for your purchases. Please call the sale manager to arrange transportation for your purchases. Unless prior credit is established, all absentee purchases must be paid in full prior to delivery.

**Internet Bidding Procedures:** Live internet bidding is available at [www.liveauctions.tv](http://www.liveauctions.tv). You may watch the auction and bid on your favorite items in real-time. Bidders must register prior to the sale.



Internet Bidding Questions May Be Directed to 937/515-1194

Internet bidders are responsible for all published updates/corrections and/or announcements made from the auction stand prior to and during the auction. It is highly recommended that all bidders consult the sale update sheet and sale order and/or contact the owner(s) or sale manager prior to bidding. The sale management and auction staff bear no responsibility for the function of the internet broadcast. The sale management reserves the right to refuse bidding privileges at anytime.

### Sale Contact Numbers:

740/452-9984 - Sale Office  
419/350-9159 - Craig Reiter, Sale Manager  
513/256-8575 - Greg Meyer  
740/819-5120 - Denny Ruff, Sale Site Manager

### Marketing Personnel:

Auctioneer . . . . . Col. Kevin Wendt  
Ringman . . . . . Mark Murphy  
Ringman . . . . . Chad Day  
Ringman . . . . . Richard Carmichael  
Ringman . . . . . John Meents

### Event Management:



**Craig M. Reiter & Associates**  
P.O. Box 305, Perrysburg, Ohio 43552  
419/862-0117 - office  
419/350-9159 - sale days  
[www.primetimeagrimarketing.com](http://www.primetimeagrimarketing.com)

### Area Lodging:

Hampton Inn, 740/453-6511  
Comfort Inn, 740/454-4144

*Watch for updates and sale order information online at [www.primetimeagrimarketing.com](http://www.primetimeagrimarketing.com).*

*Plan to attend The Winners' Circle Sale on Sunday, December 29 at 1 pm. Two hours west on I-70 at New Paris, Ohio.*

## Important Sale Information:

**Terms:** Terms of sale are cash or good check made payable immediately after the sale and before any cattle are loaded. Invoiced (absentee) accounts are payable in full within 10 days of the sale or are subject to a 2% finance charge on the tenth day. A fee of \$50 will be assessed to all returned checks. **Liability:** All animals and merchandise will be at the buyer's risk as soon as bid off but will be cared for by the seller(s) for a reasonable amount of time during and immediately following the sale. Neither the owners, auctioneers, sale manager or other affiliated personnel may be held responsible for any accidents that may occur. PrimeTIME AgriMarketing NETWORK, Inc. acts only as an agent between buyer and seller and may not be held responsible for any livestock or merchandise. It is to be clearly understood that PrimeTIME AgriMarketing NETWORK, Inc. and its representatives act only as a medium between buyer and seller and may not be held liable, financially or otherwise, for any failure on the part of the same to fulfill any obligations set forth in this sale or for the truth of any warranties expressed or implied. Neither does PrimeTIME AgriMarketing NETWORK, Inc. assume any financial obligations to collect or enforce the collection of monies between buyer and seller. This catalog has been prepared by the sale manager from information provided by the seller(s) and is assumed accurate as presented to us. However, PrimeTIME AgriMarketing NETWORK, Inc. will in no way guarantee age, pedigree, or reproductive status of the animals selling. All exceptions taken and adjustments made are between buyer and seller. **Breeding Information:** Please see the footnotes regarding breeding information for each lot. All bred females will be examined for pregnancy by a qualified DVM prior to the sale and any changes to their breeding status will be made available sale day. Conception dates listed in this booklet are based on the results of said pregnancy examination and/or known breeding dates, and are intended as estimates of calving date only. **Health:** All animals will be accompanied by a health paper valid for interstate shipment. Buyers should make themselves aware of their respective state's health requirements prior to the sale. **Guarantee:** Those cattle described herein as "checked safe" or "safe" are guaranteed bred and do not carry further guarantee. No guarantee, expressed or implied, is made as to an animal's ability to produce transferable embryos or frozen semen. All registered cattle sell with the standard guarantee endorsed by their respective breed association. All claims on bred females must be made in writing within 60 days of the sale date, and any adjustments made will be in the form of sale credit on future purchases. **Insurance:** Livestock insurance will be available at the clerk's desk. **Trucking:** If you require assistance in transporting your purchases, please contact the sale manager. Every effort will be made to minimize costs to the buyer. **Announcements:** Any announcements made from the sale block by the owners, auctioneer, or sale manager take precedence over any printed materials. **Sale Booklet Prepared by:** Craig M. Reiter, Sale Manager.

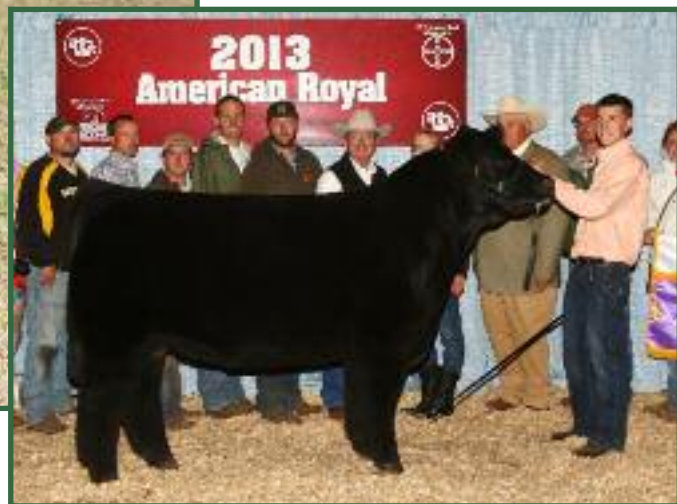


# The Power of One Great Female...138M.

*Special Features from One of the Best Our Game Has Known.*



The Emerald Lady 138M



2013 American Royal Grand Champion Steer

## Pregnancies of The Emerald Lady 138M

Reg. 50% Simmental Female

SIRE: MEYER 734

DAM: ANGUS 9053

Tested THF/PHAF/AMF/NHF

**Lot X1 – Confirmed, bull pregnancy by Believe In Me**  
Due to calve March 11, 2014

**Lot X2 – Confirmed, bull pregnancy by Believe In Me**  
Due to calve March 11, 2014

**Lot X3 – Confirmed, heifer pregnancy by BBBN X**  
Due to calve January 14, 2014

**Lot X4 – Confirmed, heifer pregnancy by BBBN X**  
Due to calve January 14, 2014

**Lot X5 – Confirmed, heifer pregnancy by ASHW Who Da Man**  
Due to calve January 1, 2014

**Lot X6 – Confirmed, heifer pregnancy by ASHW Who Da Man**  
Due to calve January 1, 2014

**Lot X7 – Three embryos by Walks Alone**

**Lot X8 – Three IVF embryos by ASHW Who Da Man**

Available for pickup or shipping sale night – Conception rate guarantee applies when terms are followed

- It's amazing, but The Emerald Lady 138M keeps getting better. She just works, big time, even when you think she will not. She continues to exceed expectations and pass her goodness to all that touch her.
- She blended with Believe In Me to produce the 2013 American Royal Grand Champion Steer for the Alliger family, IA, and with Who Da Man to produce the 2013 Heart of Texas Reserve Supreme Female, and her sons and daughters keep delivering big hits like several in excess of \$20,000 this season alone. Our 19th sale is proud to host more than 15 direct daughters, granddaughters, grandsons, and more. They're good and they get it honestly from this remarkable bovine.
- Her lifetime average of \$7,500 per calf is going up so fast it is hard to track – read this book. With National Champions in the steer, heifer, and bull divisions, jackpot winners in many breeds, herd sires, elite donor daughters working for so many, and so much more in the pipeline isn't it time you had at least one of these powerful packages?
- Choose from full brothers to the American Royal Champion, sisters to the NAILE Supreme Champion, and full sisters to Bainridge 11T and DSUL Man Up. Happy Holidays!



2013 Heart of Texas Res. Supreme Female

Lot X is offered by Solid Rock Farms, Curt Welch – Little Hocking, Ohio  
Huck Show Cattle, Dave Huck – Vincent, Ohio – 740/434-3689 or 740/749-0939

# To Make Your Season Brighter...



Lot 1

## Bainridge Beauty W2W

Reg 25% ASA Cow 2617793/ACA P345245

Calved: 4/15/09

WHO MADE WHO 411F

### DOCTOR WHO

VELD QUEEN  
MEYER RANCH 734

THE EMERALD LADY 138M  
9053

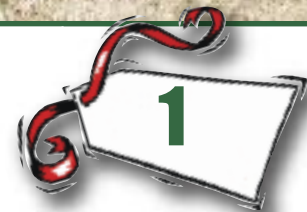
### Bred to calve February 27, 2014 to Jesse James

Selling one-half interest with the option to double hammer price to acquire full interest

*Our 19th Holiday Celebration of great show cattle is proud to host the nation's largest assembly of daughters and granddaughters of The Emerald Lady 138M, quite possibly the best pleasure stock cow in the game today. The offering is loaded with opportunity from start to finish but it is hard not to kick-off with this impeccable, young beauty that is a direct daughter of 138M and the only Dr. Who daughter in production today. She has been high potential since she arrived and she is now ready for the bright lights with a strong performance record and so much time to fulfill her pre-programmed destiny.*

*With so many productive siblings working now and a brother that was just selected as the American Royal Grand Champion Steer, this may be the one that fills her mother's giant footprints. She surely never misses her stride and she looks just like this photo; gorgeous, powerful, pipe necked, softer legged, and so shaggy with no TH in sight. Her first calf is a gorgeous In Dew Time daughter, her second daughter was by Monopoly that sold to Matt Lautner, IA, for \$7,500, and her first son is the stout one that sells here. She is dual registered and she posts a bulletproof flush record of 23 good ones per attempt. Oh yeah, you need this one, real bad. Do what you've got to do to make her yours this Christmas.*

McCauley Family Cattle



## MFC Who Dey 23A

Bull

Calved: 2/03/13

SIRE: MONOPOLY

DAM: BAINRIDGE MISS BEAUTY (DR WHO X 138M)

*From the first flush of the powerful matron that sells here, this bull calf is one to load early – before the rush – and keep forever. He brings plenty to the table with his great build and balance, ideal bone, tremendous shape, and perfect disposition. His dam is a one-of-a-kind and this bull will only increase in value as she produces.*

McCauley Family Cattle



Lot 1A



# Experience the Power of 138M!



## Bainridge Ms Who Da Lady 1Y

Reg 8.69% ACA Cow 359231

Calved: 9/03/11

WHO MADE WHO 411F

ASHW WHO DA MAN

ASHW CA X MA X SM 55

MEYER RANCH 734

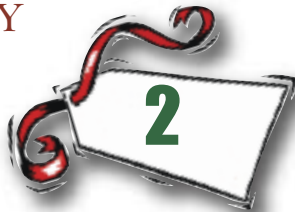
BAINRIDGE MS MEYER 138M "THE EMERALD LADY"

9053

**Sells open with an I-80 bull born 9/02/13**

*We are loaded with the best blood from the best in the game to headline our 19th edition and here is the first of two full sisters to proven leaders like DSUL Man Up and Bainridge Donor 11T, the 2009 ACA Reserve National Champion and Holiday Classic favorite donor that now works for Parker Farms, OH. This young mother was herself a Reserve Division Champion of the 2012 ACA National Show and the Grand Champion of the Ohio State Fair and she is now a proven donor with a first flush that produced 12 good embryos. She is a gorgeous first-calver that is nursing a great-patterned, really hairy I-80 son and she still looks as good as you see here. Her sister was a winning top seller that is the proven dam of recent favorites and her full brother was a powerful herd bull for Sullivan Ranch, TX, where he sired calves in excess of \$30,000. Your roadmap is already charted.*

Bainridge & Richard Jenkins



## JBT Sweet and Sexy 1Y

Reg 8.69% ACA Cow 361694

Calved: 9/15/11

WHO MADE WHO 411F

ASHW WHO DA MAN

ASHW CA X MA X SM 55

MEYER 734

JBT EMERALD LADY 138M

ANGUS

**AI 4/16 to Daddy's Money – PE to Daddy's Money – Safe-in-calf**  
THF/PHAF

*Another powerful full sister to Bainridge Donor 11T, the Reserve Supreme Female of the 2013 Heart of Texas, DSUL Man Up, and to the Lot 2 female in this sale, here is a young donor and another great offering of quality from the amazing Emerald Lady 138M. Like her winning siblings, this one is blessed with some amazing shape and power plus intense, TH-Free hair and look of a big player. Her blend of ideal belly shape and a horse neck plus some serious power up top and behind is hard to match. We've got the goods for you this year and you've got to have at least one of these 138M daughters!*

Tolle Family Show Cattle



## Bainridge Miss Taylor 9Y

Reg 62.5% ASA Cow 2622723 Calved: 4/02/11

3C MACHO M450 BZ  
**STCC SHERIFF TAYLOR**  
 AUNT BEA  
 MEYER RANCH 734  
**THE EMERALD LADY 138M**  
 9053



**Bred to calve December 17, 2013 to Hard Whiskey**

*A gorgeous, direct daughter of The Emerald Lady 138M, this very young female will calve by sale day to Hard Whiskey. She is as pretty as any young cow can be with fantastic depth, perfect bone, and the totally powerful and appealing shape that only her dam can deliver. Her first calf was a Jesse James son that sold well at Goff Show Cattle this fall so we are excited to see what comes next!*

Bainridge & Goff Show Cattle



## Bainridge Miss SOS 7Y

Reg 50% ASA Cow 2577414 Calved: 3/01/11

DJ SALUTE G509  
**SANDEENS SOS**  
 K022  
 MEYER RANCH 734  
**THE EMERALD LADY 138M**  
 9053



**Bred to calve December 19, 2013 to Man Among Boys**

*The dam of one of the best keeper heifers at Bainridge, this very young female is a sister to so many favorites and another must-have from the 138M foundation. Due before the sale to MAB, this blaze is sharp, feminine, and hairy with excellent udder quality. Own as many of these as you can before they are gone!*

Bainridge & Goff Show Cattle



## J-J Beauty 201Z

Reg 75% ASA Cow 2617152 Calved: 1/03/12

CNS DREAM ON L186  
**HTP SVF IN DEW TIME**  
 HTP SVF HONEYDEW  
 STCC SHERIFF TAYLOR  
**BAINRIDGE BEAUTY**  
 MS BAINRIDGE GOOD LOOKS



**Bred to calve December 5, 2013 to Grandmaster – Prob. Calf Sex: Heifer**

*A very powerful and attractive, three-quarter Simmental bred heifer from the 138M foundation, this is a strong option in this deep set of quality females. Her donor dam is a maternal sister to Lautner Farm's Megatron and her second dam is a full sister to a former Ohio Expo Supreme Female; all from the 138M line. You will enjoy the rare body shape and extra muscle of this heifer whose first heifer calf will put you in the profit!*

Goff Show Cattle and Barnhouse Farms







### Bainridge 005

Female Calved: 1/10/00

SIRE: **OCC EMBLAZON**  
DAM: **NEW EDITION X EMERALD LADY 138M** (MEYER 734 X AN)

**Sells open with an Ice Pick bull born 9/14/13**

*Pure cow power from a time-tested foundation, this big-bellied lady offers tremendous fleshing ability, udder quality, and total soundness. Her dam is a donor for Parker Farms, OH, and her sister sold this fall for \$6,500 for resale. Breed this Maine or Simmy and keep the power flowing!*

Bainridge



Lot 7

### Shegogs Ms 138Y

Reg 62.5% ASA Cow 2651134 Calved: 12/05/11

CNS DREAM ON L186

**HTP SVF IN DEW TIME**

HTP SVF HONEYDEW

EXAR NEW LOOK 2971

**BAINRIDGE GOOD LOOKS 12W**

BAINRIDGE MS MEYER 138M

**Bred to calve February 17, 2014 to Jesse James**

*What a powerhouse from the 138M tribe! It is hard to write a better or more versatile pedigree than this and this heifer backs it up in more ways than one. She might be the most massive and powerfully-built In Dew Time daughter you've seen and she is bound to raise something very special. Get the blood that works here!*

Shegog Farms



Lot 8



Lot 9

### JS GSC Virginia

Female Calved: 2/14/11

HEAT WAVE

**MONOPOLY**

HAZEL (TOUCHSTONE)

COWAN'S ALI 4M

**BAINRIDGE MISS ALI**

BAINRIDGE DONOR 11T

**Bred to calve January 28, 2014 to Jesse James**

*A flashy full sister to the many-time champion JA GSC Kokomo, this painted heifer is super hairy and great necked. Her dam is a proven daughter of Bainridge Donor 11T, the full sister to Lots 2 and 3.*

Goff Show Cattle & Richard Jenkins

### Embryos of Bainridge Miss Ali

DONOR SIRE: **COWAN'S ALI 4M**

DONOR DAM: **WHO DA MAN X EMERALD LADY 138M**

**Lot 9A – Three embryos by DCC Hard Drive**

**Lot 9B – Three embryos by SLC Sooner**

At least one 90-day confirmed pregnancy per package is guaranteed when terms are followed

Bainridge





# Young 138M Beauties...

## Bainridge Miss Lady 1A

Reg 9.744% ACA Cow 367742 Calved: 4/02/13

HEAT WAVE

**BELIEVE IN ME**

WADE MS PERFECTION

ASHW WHO DA MAN

**BAINRIDGE MISS WHO DA MAN 11T**

THE EMERALD LADY 138M

**Sells open**

*Crazy style and pizzazz from the Reserve National Champion, Bainridge 11T, this heifer will show well in the Chi divisions and is a full sister to the \$8,500 heifer now showing for Watson Cattle Company, OH.*

Bainridge



## Bainridge Lady 32A

Elig. MaineTainer Female

Calved: 4/03/13

SIRE: GOET I-80

DAM: BAINRIDGE LADY 2Y (SHERIFF TAYLOR X BAINRIDGE MISS WHO DA MAN 11T)

**Sells open**

*This MaineTainer show heifer has a great blend of front end extension and cool body shape. She is really sound and flexible and covered in valuable hair. Her dam is a full sister to the impressive young donor at McCauley Cattle, OH, and to Bainridge Rango, the featured herd sire at Martin Livestock, IN.*

Elegance Show Cattle and Goff Show Cattle



## Bainridge Megatron 1Z

Bull Calved: 9/02/12

GVC STATESMAN

**GVC SUH**

MISS GREEN VALLEY 535R

DCC NEW LOOK

**BAINRIDGE BEAUTY U800**

EMERALD LADY 138M

*The maternal brother to Lautner's Megatron, this bull is as deep, wide, and massive as MaineTainers get! He offers even more power from the 138M family!*

Bainridge & Jones Show Cattle

## Embryos of Bainridge Beauty U800

**Lot 12A - Three embryos by Broker**

Bainridge



Lot 12



### Bainridge 2Z

Bull Calved: 9/23/12

DMCC LIMITED EDITION 4F

#### SLC SOONER

PANNELL MISS 015

ASHW WHO DA MAN

#### BAINRIDGE 11T

EMERALD LADY 138M

*From Bainridge 11T – the proven full sister to Lots 2 and 3 and the dam of Lot 10 and the embryos selling in Lot 15 – this is a stout MaineTainer with a big hip, a deep twist, and stout bone.*

Bainridge

### Embryos of Bainridge 11T

DONOR SIRE: ASHW WHO DA MAN

DONOR DAM: THE EMERALD LADY 138M

**Lot 15A – Three embryos by Broker**

**Lot 15B – Three embryos by I-80**

**Lot 15C – Three embryos by Sooner**

At least one 90-day confirmed pregnancy per package is guaranteed when terms are followed

Bainridge





# Our Most Powerful Lineup Ever!

*Angus Royalty from Hara Farms...*



Dixie Erica 001



DCC New Look 101

Lot 16



## Hara's Dixie Erica 009

Reg AAA Cow +16571129 Calved: 2/23/09

DHD TRAVELER 6807

OCC EMBLAZON 854E

DIXIE ERICA OF CH 1019

OCC FREESTYLE 921F

DCC DIXIE ERICA 001

OCC DIXIE ERICA 814G

**Bred to calve March 15, 2014 to Mason Dixon**

Selling full possession and 75% embryo interest

*Angus royalty from the great Dixie Erica 001, this beautifully proven beast is a big part of the winning foundation at Hara Farms! Along with her two sisters this cow has produced heifer calves selling for \$48,000, \$27,000, \$18,500, \$11,000, \$10,000 and \$5,000 this year alone and she is bred for another hot calf with her whole lifetime in front of her. Her exceptional production has enabled us to offer her here and this is one Holiday opportunity you need to take home!*

*She is the gorgeous product of a powerful flush purchase that Hara Farms made when they decided to add some Angus females to their program. Her dam is the \$600,000+-producing Dixie Erica 001, the maternal sister to DCC New Look, formerly of Duff Cattle and Double J Cattle, OK, and a Frozen Gold mainstay during her day. Siblings and relatives include a large number of difference-making cattle and this cow herself has the ability to create big rewards that will last through the generations for you!*

## Embryos of Hara's Dixie Erica 009

### Lot 16A – Three embryos by Lazy JB Top Shelf 9000

*These embryos by the 2011 National Western Reserve Grand Champion Angus Bull produced maternal siblings to the \$27,000 high-selling Angus female in the 2013 Sullivan Farms Maternal Legends Sale.*

### Lot 16B – Three embryos by Conneally Final Solution

*More siblings to the high-selling Angus heifer of the 2013 Maternal Legends Sale, these embryos are by the proven sire of quality at Cherry Knoll, PA.*

### Lot 16C – Three embryos by WK Uptown

*At least one 90-day confirmed pregnancy per package is guaranteed when terms are followed*

Hara Farms



Style x Hara's Dixie Erica



First Class x Hara's Dixie Erica



First Class x Hara's Dixie Erica

# Rare, Proven Gems for the Holidays!

*The Sister to Irish Whiskey...*



## Hara's Whiskey Gal

Female Calved: 1/20/09

SIRE: DCC NEW LOOK 101

DAM: NTC 615 EVER READY (CUNIA 10 X ANGUS)

**Bred to calve March 19, 2014 to King Meyer**

*A wonderful blend of industry greats and another young leader from Hara Farms, here is a rare maternal sister to the great Irish Whiskey! You will not find many daughters of the 615 Ever Ready cow for sale and even fewer as young or proven as this one whose first two daughters sold for \$10,000 and \$5,000 right from her side. She is as good as you would expect her to be with this solid gold pedigree which only adds to her value in any breeding program. Her genetic versatility is hard to match and her physical gifts include wonderful mass, balance, and PHA-Free muscle and bone. This sister to Irish Whiskey will produce premium sons or daughters and this current mating to King Meyer blends as many legendary cattle into one pedigree as you can imagine!*

## Embryos of Hara's Whiskey Gal

**Lot 17A – Three embryos by Mr HOC Broker**

**Lot 17B – Three embryos by Man Among Boys**

**Lot 17C – Three embryos by Man Among Boys**

At least one 90-day confirmed pregnancy per package is guaranteed when terms are followed

Hara Farms







Lot 18



### MAC Irish Lullaby 835U

Reg 37.5% AMAA Cow 387883 Calved: 5/02/08

BK ICE PICK 472J

#### IRISH WHISKEY

NTC 615 EVER READY

OCC ANCHOR 771A

#### OCC DIXIE ERICA 771K

OCC DIXIE ERICA 778G

**Bred to calve January 2, 2014 to I-80**

Tested THF/PHAC

*The best in Maine maternal from Irish Whiskey and the way-powerful Dixie Erica 771K, this proven donor is built the way we need them and bred to the hilt. They do not come bigger middled or wider based and she is also great haired and super sound. Three lifetime flushes averaged 7 good ones and she may calve by sale day. You know what to do with this one.*

Tolle Family Show Cattle and Kevin Main



Lot 19



### GPKG Ms Kristin 966W

Reg 4.88% ACA Cow 360771 Calved: 4/17/09

TAKE CHARGE

#### WHO MADE WHO 411F

LSC MISS GLORY 411C

DRAFT PICK

#### GPKG KIRA

ANGUS

**AI 4/20 to Monopoly – PE to Daddy's Money – Safe-in-calf**

Tested THF/PHAC

*It's the season of giving and it just makes sense to offer one like this jawdropper that has so much to give. She is a proven donor for Sharp and Tolle with two impressive daughters you will hear from later plus embryos in the tank so it is time for this freak show to hit the road. She is built for premium production with amazing shag that belies her TH-Free status plus the best neck you can draw blended with an extreme amount of top and hip and agile movement. It's the Brent Tolle recipe; make them unique, multiply them, and turn them loose for others to enjoy. Merry Christmas.*

Tolle Family Show Cattle and Sharp Farms

# Breeders' Treasures...



A sister to Lot 20

Lot 20



## Gofg Miss Monica 31X

Reg 19.383% ACA Cow 354759 Calved: 11/15/10

RDD ACES HIGH 6N

BMS SPOCK

RDCA HOPE 210L

SAV 5175 BANDO 1024

HXC ARISTOCRAT 931P

HXC ARISTOCRAT 313J

**Bred to calve January 25, 2014 to Unstoppable**

Retaining the right to one flush or not less than 6 embryos

*A very young Chiangus donor that is being moved out to make more room for show heifers, this unique beauty is one that smart breeders will add to their fold. She is the last natural calf from the Green Oak donor, Aristocrat 931P, whose daughter by BC Raven was Grand Champion of the 2010 NAILE Junior Chiangus Show, and she is just getting started with one cool bull calf on the ground and 6 good eggs in the tank. She is sweet necked and perfect profiling with spot-on balance and a very versatile size. Other Aristocrats have made great investments in past Holiday Classic and other sales and this is surely the next one. Nearly everything to mate with this show piece will produce a Chi-eligible calf and this one can be a MaineTainer as well!*

Tooms Show Cattle



Lot 21



## Magnetic Lady W1

Reg PB ASA Cow 2481123 Calved: 2/06/09

NICHOLS LEGACY G151

CNS DREAM ON L186

CNS SHEEZA DREAM K107W

GFI MAGNUM K52

SVF NJC MAGNETIC LDY M25

NJC EBONY ANTOINETTE

**Sells open with an I-80 bull born 9/08/13**

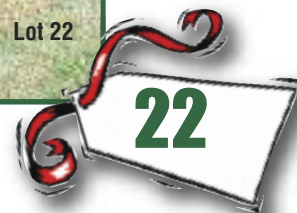
*Another proven donor and a 100% producer of premium quality from the famous Magnetic Lady at Sunset View Farm, KY, this beautiful red lady will be missed in the Bainbridge pastures. Aside from the studly calf she has on her side now, this great-bodied purebred is the dam of a \$16,000-valued first calf that sold to Adam Heil, OH, and a sweet replacement heifer that is being retained. This cow has always been a looker and she always looks great despite being one of the best milkers in the field. She is big backed and beautiful and will be ready to flush by sale time.*

Bainbridge & Shegog Farms





Lot 22



### MEK Brandy 3208

Reg AAA Cow 16175171 Calved: 3/03/08

SAF 598 BANDO 5175

HSAF BANDO 1961

JKS MISS CHEYENNE 196

WAR ALLIANCE 9126 6006

MAF BRANDY 546

MAF BRANDY 434

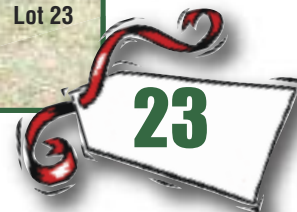
**Bred to calve March 25, 2014 to General Lee**

*Any investment in the McCauley Brandy family is a good one and you surely cannot guess wrong here! This unique Angus cow has been a favorite since birth and she has developed into one powerful female with leading substance, massive depth, and the best neck you can put on a tank. All of her daughters remain at MFC and she is bred for something special with the McCauley and Watson product that now works for Lautner Farms, General Lee!*

McCauley Family Cattle



Lot 23



### Champion Hill Mayflower 4308

Reg AAA Cow 16284643 Calved: 4/02/08

SAV 8180 TRAVELER 004

SAV 004 TRAVELER 4836

CHAMPION HILL LADY 2245

SAV LIMITED EDITION 9283

CHAMPION HILL MAYFLOWER 2994

CHAMPION HILL MAYFLOWER 1503

**Bred to calve March 3, 2014 to General Lee**

*The Mayflower has landed! This goose-necked powerhouse is filled with the good stuff like a pedigree that includes many Champion Hill leaders like a second dam that was an Atlantic National Champion Cow/Calf, a dam that was a winner in the 2007 Ohio Super Star Angus Sale, and her sire, Gator, is a full brother to the dams of Lots 56A and 56B. This cow is incredibly massive but still great looking and she works with everything.*

McCauley Family Cattle



Lot 24

### JMCB Foolish Lady S682

Reg 50% Simmental Female Calved: 9/15/06

SIRE: PVF BLACK JOKER  
DAM: ANGUS

**Bred to calve March 30, 2014 to Bodacious**

*A really stout half-blood Simmental that can raise them right, this is the productive dam of three top females in the Beckett herd including one by Steel Force that will be shown this year. She is absolutely monster ribbed with the right hip and foot to make them special. She will milk with the best of yours and this calf is a likely baldy by the Bojo x Meyer blend that makes them extra fuzzy!*

Beckett Cattle



Lot 25

### JMCB Venus 13W

Reg. PB Simmental Female Calved: 2/12/09

SIRE: STAR POWER  
DAM: POWER DRIVE GRANDDAUGHTER

**Bred to calve February 12, 2014 to Unstoppable**

*Quite a Simmental package for those that like them good looking, good doing, and profitable, this young cow is impressive and off to a great start! She is a former 2-time Division Winner of the Kentucky State Fair and her production includes the big-bodied daughter selling here plus a stout Monopoly son that she sold early this summer from her side. This cow is really stout hipped and big legged with a large hoof and as much look as you like. This should be perfect with Unstoppable!*

Beckett Cattle



Lot 25A

### JMCB Starlight 15Z

Reg. 75% Simmental Female Calved: 2/22/12

SIRE: MO MAGIC  
DAM: VENUS 13W (STAR POWER X POWER DRIVE)

**Bred to calve March 28, 2014 to Jesse James**

*No nonsense cow power from the top female selling here, this heifer is a reluctant sale offering because we know what she will do; make profits for a long time. This heifer is maternally constructed with a bold, deep rib, excellent udder development, and plenty of substance. She has longevity in her blood and a cool calf in her belly!*

Beckett Cattle





### GSC Meyer Lady 141Y

Female Calved: 9/18/11

SIRE: MEYER 734  
MGS: OCC ANCHOR

**Sells open with an GSC Moonshine bull born 10/12/13**

*Loaded with genetics and cow shape that never goes out of style, here is a very young Meyer 734 x Anchor blend with her first flashy calf at-side. Her dam was a donor for Shegog Farms, OH, and this young cow is really attractive with excellent feet and udder quality. Her fancy bull calf is by the calving-ease MaineTainer, GCC Moonshine.*

Goff Show Cattle



Lot 26

### BJ Donor 10

Female Calved: 2008

SIRE: 3C MACHO  
DAM: SIM X ANGUS

**Bred to calve March 23 to Monopoly – Checked safe**

*Here is another proven donor and a remarkable producer that will make her new owner very happy! This lovely half-blood always looks great and flushes exceptionally well. Calves have won county shows in North and South Carolina and she has worked well with this mating before. One flush produced 22 good embryos that were sold for export, and she is due with a calf that should put you in the profit column right away. She is the right size and extra fancy with great feet and balance.*

B&J Angus and Club Calves



Lot 27

### BJ Donor 126

Female Calved: 2007

SIRE: CHILL FACTOR  
DAM: SIM X ANGUS

**Bred to calve April 1 to Heat Wave – Checked safe**

*A proven B&J donor with a number of credits, this massive, double-clean Chill Factor is the dam of three calves that have sold well to New York – two heifers and one steer. They have shown well and this cow flushes equally well in the 12-15 embryo range per attempt. Three daughters remain to replace her, all from embryo transplant. She is big footed and big ribbed with the loose build that works with this mating to the original man, Heat Wave!*

B&J Angus and Club Calves



Lot 28



**GOET/TSC 33**

Female Calved: Spring 2008

SIRE: **MANCHILD**  
DAM: **GOET SASSY (COOKIE MONSTER)**

**Bred to calve January 15, 2014 to Bojo**

*Silly hairy and choke necked with the back and hip that works, this young cow is a productive daughter of Goettemoeller Show Cattle's great "Sassy" donor that has produced so well for them. She worked so well with Bojo to produce the heifer selling here that she is bred for a repeat shortly after you get her home!*

Tooms Show Cattle



**TSC Sassy Pants**

Female Calved: 1/17/13

SIRE: **BOJO**  
DAM: **TSC 33 (MANCHILD X GOET SASSY)**

**Sells open**

*Like mama makes them, check the square, thick, shaggy build of this blue favorite!*

Tooms Show Cattle



**BJ 21**

Female Calved: 2008

SIRE: **FULL FLUSH**  
DAM: **MEYER 734 X ANGUS**

**Bred to calve April 17 to Monopoly**

*A stout and good looking Full Flush x Meyer 734 blend whose 2012 steer went to North Carolina and won twice. She is bred for a repeat performance.*

B&J Angus and Club Calves



**BJ 46**

Female Calved: 2009

SIRE: **DR WHO**  
DAM: **ANGUS**

**Bred to calve March 23 to Heat Wave**

*A young Dr. Who that is clean-bred and just getting ready for heavy production. She is good haired and smooth on the move plus she milks very well. Bred for power and quick success with Heat Wave!*

B&J Angus and Club Calves



**BJ 30**

Female Calved: 2008

SIRE: **FULL FLUSH**  
DAM: **SIM X ANGUS**

**Bred to calve May 3 to Walkie Talkie**

*Another Full Flush with extra muscle and extension, this is a great-looking, young cow whose daughters are all working at B&J. She milks great and has the stoutness and toughness that her sire is known for.*

B&J Angus and Club Calves





## BJ 39

Female Calved: 2007

SIRE: **FULLBACK OF 9FB3 SON**  
DAM: **NORTHERN IMPROVEMENT X ANGUS**

**Bred to calve March 23 to Heat Wave**

*Three calves from this cow have sold to Shane Show Cattle, OH, that has the look, hair, and maternal ability you would expect from this pedigree. She has one bad quarter but she milks so well from the others that her 2013 calf was one of the first to sell for a show calf. She will not need any help with this Heat Wave!*

B&J Angus and Club Calves



## BJ 101

Female Calved: 2009

SIRE: **FULLBACK OF 9FB3 SON**  
DAM: **ANGUS**

**Bred to calve March 23 to Heat Wave**

*Big ribbed, stout boned and ready, this is a heavier-duty Angus cow with a Heat Wave coupon coming!*

B&J Angus and Club Calves



**Internet Bidding Procedures:** Live internet bidding is available at [www.liveauctions.tv](http://www.liveauctions.tv). You may watch the auction and bid on your favorite items in real-time. Bidders must register prior to the sale.

LiveAuctions.TV

Internet Bidding Questions May Be Directed to 937/515-1194

# Bulls and Show Heifers...



## CWTC I-77

Reg 75% AMAA Bull 436211

Calved: 9/13/12

COWAN'S ALI 4M

GOET I80

BPF MILEY 80T

GVC SPECIAL DELIVERY 42S

MAC JAZEE ROSE 050X

JPAL JAZEE 1T

BW: 72 - Tested THF/PHAF - Retaining one-third semen interest

*The first calf from a winning dam and a powerful line of stock, I-77 is a double clean, calving ease, and style specialist that should fill so many needs. He offers the versatility of a polled, three-quarter Maine profile with the good looks, performance, and power that made him the Grand Champion Maine-Anjou Bull of the 2013 Ohio State Fair. His dam won often and was a \$13,500 high seller of the 2012 OMAA Sale plus his second dam is the Frozen Gold powerhouse, JPAL Jazee 1T. Expect this guy to make calving season easier while adding style, hair, and more power than you might expect. He is filled with cow power and a pedigree that is so unlike his likely companions that he will make a very handy tool to use with confidence each year.*

Tooms Show Cattle



## JDR The Dictator 12Z

Reg 87.5% AMAA Bull 437747

Calved: 12/05/12

DCC PREMIUM BLEND 47S

BPF REVOLUTION 402X

PANNELL MISS 015

FJH GRAND SLAM 278M

WHRM SELMA 76W

DVMM VICTORIA 100S

*A royally bred and Christmas treat from the syndicated BPF Revolution - the maternal brother to Sooner - this stout bull is backed by a winning dam shown by Jake Ruffing, OH. He is rugged and stout yet smooth shouldered and arrived with a low birth weight. With his purebred, double-clean pedigree he will make a wise choice for better replacements and show prospects.*

STJ Ruffing Cattle Company



## SF Walkin' Lady

Female

Calved: March 2013

SIRE: WALKS ALONE

DAM: ANGUS

**Sells open**

*A fancy show heifer that has been shown twice and won her class both times, this Walks Alone daughter is great necked and super thick with excellent hair. Note the tremendous length of body.*

Shegog Farms





# THE BLACK GOLD DISPERSAL

*Selling Every Female and the Entire Frozen Inventory from a Winning Herd!*

## BG Pheona 160Z

Reg 25% AMAA Cow 428305 Calved: 2/01/12

COWAN'S ALI 4M

BOJO

MEYER RANCH 734

PRINCESS #17

COMM ANGUS

**Bred to calve January 7, 2014 to I-80**

Tested THF/PHAF

*The first of three strong daughters of the Princess 17 donor at Black Gold, this TH-Free Bojo daughter is going to make an awesome club calf cow. Her dam has done it all for Black Gold and this heifer is quite a powerful package with her wide, stout, chunky build that is still soft, flexible, and super hairy. Two brothers have been Grand Champions and this heifer has a rare shape that is so good to own!*

Black Gold Cattle Company



## Every Black Gold Female Sells!

## Dorothy 340

Female Calved: 4/29/12

SIRE: **MONOPOLY**

DAM: **PRINCESS #17** (MEYER RANCH 734 X COMM ANGUS)

**Bred to calve August 18, 2014 to I-80**

Tested THF/PHAF

*A very young sister to two winning steers and Lots 40A and 40C, this heifer was born at an embryo center in Kansas and she came in a little green but she is one you should not ignore. Like her sisters and productive dam, she has the sweet feet and leg set plus fantastic hair and an improved front end. She is TH-Free but you won't believe it and, in time, you'll remember her purchase as one of the best moves you've made.*

Black Gold Cattle Company



## BG Patty 168A

Female Calved: 1/12/13

SIRE: **ALIAS**

DAM: **PRINCESS #17** (MEYER RANCH 734 X COMM ANGUS)

**Sells open**

*A full sister to two champion steers like the one shown here from 2009, this double-clean heifer is deep, stout, and bred to make a strong cow.*

Black Gold Cattle Company

## Embryos of Princess #17

DONOR SIRE: **MEYER RANCH 734**

DONOR DAM: **COMM ANGUS**

**Lot 40AA – Three embryos by Heat Wave**

**Lot 40BB – Three embryos by Monopoly**

**Lot 40CC – Three embryos by Monopoly**

**Lot 40DD – Four embryos by Monopoly**

*The last embryos in the tank from Princess 17!*



# BLACK GOLD CATTLE COMPANY

*Every Black Gold Female Sells! None Held Back!*



## AH Coconut 601

Reg ASA Cow \*x4113346 Calved: 2/14/06

ELBEE IMPROVED LEADER  
**ELBEE LEADER C087**  
 ELBEE ROSY LADY  
 AR SU LU KOOL 1007  
**KS CHERRY ROO**  
 CHERRY'S SWEET VISION 22M

**Bred to calve August 3, 2014 to I-80**  
 Tested THC/PHAF

*A great producer! This purebred Shorthorn cow is the right kind with a stout, square hip, the right frame score, and a beautiful udder. She is the dam of the 6-time champion son by Alias shown here and his exciting full sister that sells as well. We intended to flush her this summer but did not get to it so she is fall bred but do not miss her – she works every time for exciting results!*

Black Gold Cattle Company



Alias x Lot 41



## BG Calamity Jane 170A

Female Calved: 4/28/13

SIRE: **ALIAS**  
 DAM: **AH COCONUT 601** (ELBEE LEADER C087 X KS CHERRY ROO)

**Sells open**  
 Tested THC/PHAF

*Get noticed in the show ring with this blue beauty whose brother was a 6 time champion! This heifer is a real powerhouse with a huge body and incredible hair. When she is done in the ring, she will make a great cow like her mother!*

Black Gold Cattle Company



## Baron Morgan Venus 5S

Reg 87.5% AMAA Cow 361676 Calved: 3/16/06

NHB POLLED ENERGIZER 688  
**COWAN'S ALI 4M**  
 FJH COUNTESS 115H  
 NAGE DART 76D  
**BARON SWEET RUBY**  
 BARON SWEETIE 34

**Bred to calve March 5, 2014 to I-80**  
 Tested THF/PHAF

*This sweet and clean high-Maine is a proven performer with credits like a past Grand Champion Steer of the Monroe County Fair by Alias and the very powerful Unstoppable son shown here that will win this year. She is a rare Ali daughter that throws hair and she has blended well with several bulls. Buy a proven favorite from this total dispersal of the Black Gold herd!*

## Embryos of Baron Morgan Venus 5S

**Lot 42A – Three embryos by Alias**

Black Gold Cattle Company





## Miss Foxy 701

Reg ASA Cow \*x4125355

Calved: 2/13/07

WF DILLON

SCC ESKIMO JOE G50 7/8

SCC ROAN PLUS E64 13/16

TKA OUTCAST

MISS ELLEN

CBS JAZZIE

**Bred to calve January 9, 2014 to Unstoppable**

Tested THF/PHAC

*This one nails it every time! You will be hard pressed to find a better-producing Shorthorn cow than this one whose daughter by The Headliner was a top seller of the Ohio Expo Shorthorn Sale and whose other calves have all made money. She should be perfect for Unstoppable with her huge leg shape, awesome hair, and great balance and structure. She adds power and looks to everything!*

Black Gold Cattle Company



The Headliner x Lot 43



## DF Improved Odyssey D2U

Reg AAA Cow 15999725

Calved: 2/20/08

TC STOCKMAN 365

NORTHERN IMPROVEMENT 4480 GF

BLACKCAP OF RR 5367

HARB HIGH PLAINS 975 JH

TJ ODYSSEY 0903

LONGACRES PURE PRIDE 019



**Bred to calve April 9, 2014 to Bigfoot (Monopoly x Kadabra)**

*A beautiful Northern Improvement daughter with the look and build of a winning show heifer, this young cow is hard to ignore. She is just getting started but she will be excellent with her extended front, smooth hip, and beautiful structure and udder shape.*

Black Gold Cattle Company

## CKG Abbie 802

Reg ACA Cow 336769

Calved: 3/13/08

WHO MADE WHO 411F

DOCTOR WHO

KHV QUEEN

VF NEW EDITION 201

VF EDIE 517R

ELBA OF BARKER CREEK L103

**Bred to calve March 8, 2014 to I-80**

Tested THF/PHAF

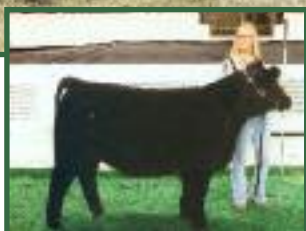
*A super-stout Dr. Who with some major top, hip, and belly, this cow has always been a favorite. She will knock you over with her capacity, bone, and total mass plus she is double clean and hooked up right with I-80!*

Black Gold Cattle Company





Lot 46



Alias x Lot 46

## Grannys Untouchable 21T

Reg 25% AMAA Cow 388223 Calved: 2/13/07

IRISH WHISKEY  
**GCC MR UNTOUCHABLE 423R**  
 GCC MS FINAL FORMULA 8423H  
 BAR EXT TRAVELER 205  
**RITA 9A2 OF 7E18 205**  
 RITA 7E18 OF 5R5 RITO 3B17

**Bred to calve February 21, 2014 to Believe In Me**

*A proven donor from a proven donor, this impressive Irish Whiskey granddaughter has been super and her daughters have been even better! She is a maternal sister to the Lot 77 heifer in this sale as her dam was the stout-producing 9A2 donor formerly of Bainridge that now works for Larry Simmons Farms, OH. A daughter by Alias was a top seller in the NAILE Chi Sale and two more strong ones sell here.*

## Embryos of Granny's Untouchable 21T

**Lot 46AA – Three embryos by Walks Alone**

**Lot 46BB – Four embryos by Walks Alone**

**Lot 46CC – Three embryos by Heat Seeker**

Black Gold Cattle Company



## BG Rihanna 161Z

Reg 3.45% ACA Cow 362125 Calved: 2/03/12

HEAT WAVE

**THE HEADLINER**

WTF RUTH MEDINA (HAZEL)  
 GCC MR UNTOUCHABLE 423R

**GRANNYS UNTOUCHABLE 21T**

RITA 9A2 OF 7E18205

**Bred to calve January 7, 2014 to I-80**

Tested THF/PHAF

*A bold-ribbed daughter of the impressive donor that sells here, this double-clean heifer looks a lot like her top-producing dam. She is great on her feet and really balanced – just like her mother – with excellent udder shape and a cool calf coming soon!*

Black Gold Cattle Company



Lot 46A

## BG Regina

Female Calved: 1/04/13

SIRE: **A CUT ABOVE "FAT BUTT"**

DAM: **GRANNY'S UNTOUCHABLE 21T**

**Sells open**

*A big ribbed, neat-necked cow prospect from the proven donor selling here, look for this one to make a strong producer as well!*

Black Gold Cattle Company





# THE BLACK GOLD DISPERSAL

*Selling Every Female and the Entire Frozen Inventory from a Winning Herd!*

## BG Emily 133X

Reg 4.88% ACA Cow 349914 Calved: 3/04/10

TAKE CHARGE

WHO MADE WHO 411F

LSC MISS GLORY 411C

DKHC COMM 5

**Bred to calve January 18, 2014 to Alias**

Tested THF/PHAF

*This gorgeous, very young Who Made Who daughter has the look and the size you need to make some big things happen! She's great necked with perfect bone and a softer leg set that should be just the trick with so many of your favorites. This is the right size and the right build of Who daughter to last for ages and make money each year!*

Black Gold Cattle Company



Lot 47

## Black Gold Alisha 103U

Reg 50% AMAA Cow 391011 Calved: 4/03/08

NBH POLLED ENERGIZER 688

COWAN'S ALI 4M

FJH COUNTESS 115H

IS X CA X AN X MA NR10

**Bred to calve February 12, 2014 to King of the Mountain**

Tested THF/PHAF

*A young, half-blood Ali daughter with a great neck, udder, and frame score, this cow milks very well and is very quiet. She is double-clean and bred to the Sullivan high seller, King of the Mountain, a Monopoly x Business x Total Play blend!*

Black Gold Cattle Company



## CKG Corrine 814

Reg 9.13% ACA Cow 336778 Calved: 4/07/08

NBH POLLED ENERGIZER 688

COWAN'S ALI 4M

FJH COUNTESS 115H

EXAR NACHO 3090

VF CORAH 631

VF CARLETTA 303

**Bred to calve January 16, 2014 to Boardwalk**

Tested THF/PHAF

*Another double-clean, former show heifer that is young and ready to win, this Ali is a notch stouter and wider. She raised a high-selling Alias steer in 2012 and should match with Boardwalk well. Like the rest of the Black Gold cows, she has a top attitude and milks well.*

Black Gold Cattle Company



## DF Miss Gold Medal D3R

Reg AHA Cow P42633351 Calved: 2/15/05

REMITALL KEYNOTE 20X

MSU MEDALIST 12M ET

WNH MS OPTIMA 9401

MSU STOCK AGENT 15H

LP SARA 428L

LP NICOLE 515H

**Bred to calve April 12, 2014 to I-80**

Tested THF/PHAF

*This registered Hereford is a club calf producer and a model cow! All her calves have done well in sales and she keeps easily, has a super attitude, and breeds AI each time. You can see why she works so well with her deep, moderate, correct build plus a top udder design and upgrade muscle shape. If she has a good I-80 it will not be the first or the last from her!*

Black Gold Cattle Company



Lot 50



Unstoppable x Lot 51



I-80 x Lot 51

## Grannys Amer Woman 37T

Reg AMAA Cow 388221

Calved: 2/07/07

IRISH WHISKEY

GCC MR UNTOUCHABLE 423R

GCC MS FINAL FORMULA 8423H

3C CROCUS D861

SM X MA D861



**Bred to calve March 1, 2014 to Believe In Me**

Tested THF/PHAC

*This cow raises them right! She is the dam of the Grand Champion Steer by I-80 shown here and her 2013 son by Unstoppable is in our show string and looks like a real winner. She is the product of an embryo purchase from Granny Creek Farms, OH, and she never misses. Her correct structure, powerful bone, and fancy shape works every time; a good daughter sells as well!*

Black Gold Cattle Company

## BG Storm 149Y

Reg ASA Cow \*xAR53330

Calved: 2/26/11

JAKE'S PROUD LEADER 243H

JAKE'S PROUD JAZZ 266L

JAKE'S JAZZY 250J 7/8

GCC MR UNTOUCHABLE 423R

GRANNYS AMER WOMAN 37T

3C CROCUS D861 BZ

**Bred to calve March 16, 2014 to King of the Mountain**

Tested THF/PHAF

*A former Champion Shorthorn+ Female of the MI Winter Classic, this very young cow is going to be a really fancy top performer – like her dam. She is a joy to be around and her design is first rate with loose, correct movement, a beautiful udder, and a very classy shape. Bred for her first show calf to King of the Mountain!*

Black Gold Cattle Company



Lot 51A



Lot 52

## CKG Hanna 009

Reg 11.92% ACA Cow 349838

Calved: 4/02/10

DCC THE MAN

GVC STATESMAN 4R ET

GVC JAZZMYN 001L

JMP FRONT PAGE NEWS

VF DREAM ANNIE 810

VF DREAM WEAVER 505

**Bred to calve August 2, 2014 to I-80**

Tested THF/PHAF

*A great show heifer that has become a top cow, this powerful redhead was Champion Chi of the Michigan Winter Classic and a class winner in the NAILE Junior Show. Her dam is VF Dream Annie, a former ACA National Champion and the dam of numerous top cattle for Ventura Farms, MI. This cow is very complete and correct and she is bred to last from a line of great females.*

Black Gold Cattle Company





## BG Amber 173A

Female Calved: 1/03/13

SIRE: I-80

DAM: SALLY'S VORTEC BJ72 (JM VORTEC X DD SALLY)

**Sells open – Tested THF/PHAF**

*This sweet show and cow prospect is the double-clean product of a strong-producing purebred dam that has been excellent. Her maternal sister was a Grand Champion and crowd-favorite sale heifer at the Ohio Expo and this heifer is neat and correct with excellent feet and no-miss structure. She may be registered as either a MaineTainer or Shorthorn+.*

Black Gold Cattle Company



## Embryos of Sally's Vortec BJ72

DONOR SIRE: JM VORTEC

DONOR DAM: DD SALLY

**Lot 53A – Three embryos by Hannibal**

**Lot 53B – Three embryos by Hannibal**

**Lot 53C – Three embryos by Hannibal**

*These embryos will produce full siblings to the winning heifer shown here and maternal sibs to the Lot 53 heifer.*

Black Gold Cattle Company

# The Entire Black Gold Semen Inventory

*Selling all the semen listed here plus a Millennium 2000 Nitrogen Tank!*

About Time - 5 units

Alias - 10 units

Boardwalk - 1 unit

Bodacious - 2 units

Cervaza - 7 units

Cowboy Cut - 27 units

Fat Butt - 2 units

Highlander - 8 units

I-80 - 2 units

Q-Dog - 3 units

Rocky Balboa - 1 unit

Sin City - 2 units

Smokin Joe - 1 unit

Unstoppable - 3 units

Who Made Who - 4 units

**Also selling 15 units of  
MR HOC Broker semen separately!**

# Holiday Classic 19

*The Bred Heifer Offering – Young Holiday Treats!*



Lot 55A



## WM Kate 033Z

Reg 50% AMAA Cow 429109

Calved: 3/11/12

**Bred to calve February 8, 2014 to Jesse James**

HEAT WAVE

*The first of two great products of a former Holiday Classic high seller, these sale features are great proof of how a strong investment in Holiday Classic quality will "Pay You Back" for years to come. Both of these shaggy delights are full sisters to Lautner's new General Lee sire that is seeing wide use and all were produced from a great flush that has to date produced in excess of \$50,000. Their dam, Henrietta 2W, is producing with the best in the game and these sisters are great ways to access her power. This one is flat boned, big haired, and she has the sweet look you need!*

MONOPOLY

WTF RUTH MEDINA

SLC SOONER 101M

BNWZ HENRIETTA 2W

BOSS BEAUTY 84M

McCaughey Family Cattle & Watson Cattle Company



Lot 55B



General Lee



## WM Black Pearl 034Z

Reg 50% AMAA Cow 429110

Calved: 3/11/12

**Bred to calve March 17, 2014 to Jesse James**

HEAT WAVE

*Check your pedigree here and remember the strength of the second dam of these heifers, Boss Beauty 84M, the Frozen Gold leader whose daughters have been amazing performers and whose brother sired the 2013 NAILE Supreme Junior Female. This sister to The General is another power-bodied, young donor with amazing shape, shag, and look. Get both of these Henrietta 2W daughters before we shut off the supply!*

MONOPOLY

WTF RUTH MEDINA

SLC SOONER 101M

BNWZ HENRIETTA 2W

BOSS BEAUTY 84M

McCaughey Family Cattle & Watson Cattle Company





Lot 56A



### ELF Ms Blackbird Z201

Reg 50% ASA Cow 2685846 Calved: 2/23/12

FB PRIME CUT 456L

**FLYING B CUT ABOVE**

DILLONS MS PRETTY WOMAN

SAV 8180 TRAVELER 004

**CHAMPION HILL LADY 5571**

CHAMPION HILL LADY 2245

**Bred to calve February 27, 2014 to I-80**  
THF/PHAF

*A stunning baldy from a donor dam that is a full sister to the Champion Hill sire, "Gator", this heifer has an uncommon blend of a powerful base and rib coupled with a sleek front end. She offers true F1 goodness from a tested cow line in a big backed, ideally-sized package.*

Tolle Family Show Cattle



Lot 56B



### ELF Ms Blackbird Z202

Reg 50% ASA Cow 2685835 Calved: 2/27/12

FB PRIME CUT 456L

**FLYING B CUT ABOVE**

DILLONS MS PRETTY WOMAN

SAV 8180 TRAVELER 004

**CHAMPION HILL LADY 5571**

CHAMPION HILL LADY 2245

**AI 4/15 to Daddy's Money – PE to Daddy's Money – Safe-in-calf**  
THF/PHAF

*You need at least one of these sisters on your team! Here is another plump bodied, choke-necked blaze from Gator's full sister with the ideal blend of style and substance. The feminine requirements of these two are spot-on – fleshing ability, udder quality, soundness, disposition – but they are also wide, shapely, and so high potential. What the heck, load them both!*

Tolle Family Show Cattle



Lot 57



### JMCB Beast Mode 150Y

Female Calved: 9/04/11

SIRE: WALKS ALONE

DAM: PALE FACE X MA X AN

Bred to calve February 8, 2014 to Jesse James

*A baldy beast to make your season bright, this popular heifer is way out there in terms of earning potential and exciting quality. Her name says it all as you rarely find this degree of power blended with this degree of look and soft quality. Her disposition is excellent and she was born for this combination and others like I-80 and Daddy's Money. Ho, ho, ho.*

Beckett Cattle

### SF 61

Female Calved: November 2011

SIRE: NORTHERN IMPROVEMENT

DAM: AFTER SHOCK X FULL DRAFT

Bred to calve January 29, 2014 to Jesse James

*These Shegog heifers are really impressive and this is another great option from a proven dam that has given strong results over the years. This high-maternal breeding piece is big backed and wide boned with a hot calf coming soon!*

Shegog Farms



### SF 79/706

Female Calved: September 2011

SIRE: DR WHO

DAM: HARA'S KATRINA (MEYER X ANGUS)

Bred to calve February 26, 2014 to Jesse James

*A very flashy, painted baldy from Hara's Katrina that was a featured donor of our 2012 Holiday Classic, this double-clean heifer is loaded with proven blood. She has two full sisters in the Shegog herd and both milk very well and have produced well with consistent color and quality. This heifer has a perfect disposition and a high-quality udder plus a sharp, hairy profile.*

Shegog Farms







**WLCF Joe Joe 455Z**

Reg 15.06% ACA Cow 366478 Calved: 1/06/12

HEAT WAVE

**WALKS ALONE**

WADE MS PERFECTION  
MLCO DISTURBED 012K

**455R**

WLCF CHAROLAIS 100

**Bred to calve February 10, 2014 to Daddy's Money 55Z**

*What a silver breeding piece to take you to the next level! Joe Joe 455Z was the Supreme Champion of the MTSU Block & Bridle Show and Mississippi Junior Livestock Expo and you'll be able to tell why when you study her beautiful build and real power. Her unique pedigree is filled with proven cattle, like the most productive Charolais cow at Woodlawn Farms and a maternal grandsire by FedEx which gives her a higher percentage of Chi blood to make her even more useful; every calf she has may be registered with the ACA, a rare commodity in one this good looking and modern. Silver bells and then some!*

Woodlawn Farms and Tolle Show Cattle

**STJR 130E**

Female Calved: Spring 2012

SIRE: **MONOPOLY**

DAM: **PAYOFF X MAINE ANJOU**

**Bred to calve January 21, 2014 to Hardcore**

*This Monopoly daughter is bold and rugged with a unique genetic twist. Her dam is an old-school Maine cow that has been excellent over the years and this heifer is her deepest ribbed, stoutest one yet!*

STJ Ruffing Cattle Company



**STJR 169E**

Female Calved: Spring 2012

SIRE: **RED ROCK**

DAM: **HEAT WAVE X FULL THROTTLE**

**Bred to calve March 5, 2014 to Maternally Yours**

*A really cool-marked baldie female, this one will mature into a fancy cow. She's great necked and long down her top with the right build to blend for power. Her first calf will be one of the very first by the new Lautner heifer sire, Maternally Yours!*

STJ Ruffing Cattle Company





### RFRJ Ms Knight Time Y188

Reg 50% ASA Cow 2697492 Calved: 11/20/11

HTP SVF IN DEW TIME

LAZY H KNIGHT TIME U55

SS U-NIGHTS MISTI M706M

TC TOTAL 410

HERITAGE 410 TOTAL 857

TODDS FELICIA

**AI 5/06 to I-80 and 5/07 to 80 Proof – PE 5/09-7/15 to CAJS Soul Patch – Safe AI – Due 2/11**

*This set of Reality Farms bred heifers is impressive and this heifer is surely a favorite. She is built so well with great balance, impressive depth, and spot-on structure that is hard to imagine her not raising plenty of premium babies. Her sire really did the trick at Reality Farms and this is some of his finest work with an upgraded front end, better hair, and plenty of feminine muscle.*

Reality Farms



### RFRJ Queen 250

Reg 50% ASA Cow 2697493 Calved: 7/24/12

HTP SVF IN DEW TIME

LAZY H KNIGHT TIME U55

SS U-NIGHTS MISTI M706M

ALBERDA TRAVELER 416

PAF E814 AT F001

PAF 9021 EXT E814

**AI 4/16 to WAGR Driver – PE 5/09-7/15 to CAJS Soul Patch – Safe AI – Due 1/21**

*A beautiful baldy half-blood from a high performance dam that has produced a premium calf every year at Reality Farms, this is another classic beauty that anyone can use. She is so deep and correct with so much cow power bred into her that she will produce consistently successful results in any scheme. She boasts an API in excess of 120 and is due for an exciting three-quarter calf by Driver!*

Reality Farms



### RFRJ Ms Macho 864Z

Reg 75% ASA Cow 2697494 Calved: 2/26/12

SVF STEEL FORCE S701

ZKCC CHOPPER 844U

MS MEYER 31S1 OF TH

3C MACHO M450 BZ

RFRJ MISS MACHO 864

WECC 907

**AI 4/15 to Mercedes Benz – PE 5/09-7/15 to CAJS Soul Patch – Safe AI – Due 1/20**

*This impressive three-quarter Simmental is filled with lasting cow power on both sides of her pedigree and anchored by a proven dam that was a great purchase in the West End Dispersal. Her maternal brother by Upgrade is a strong leader in the 2013 bull crop and this heifer is built great with ideal size, depth, and balance plus easy movement and a load of milk in her pedigree. Her first calf will be eligible as both a Maine-Tainer and a low Simmental.*

Reality Farms





## RFRJ Ms Star Power 13

Reg 50% ASA Cow 2636079 Calved: 10/14/11

CNS DREAM ON L186

SVF STAR POWER S802

SVF SHEZA STAR N902

3 - OCC ANCHOR X SIM

AI 4/16 to I-80 and 4/18 to 80 Proof - PE 5/09-7/15 to CAJS Soul Patch - Safe AI - Due 1/23

Another really stout and good half-blood Simmental, this curvy beauty is backed by one of the most consistent cows at Reality Farms. Every sister to this heifer has sold well with one being a consistent winner in Georgia for Craig Carver, including a win at the Georgia National Fair. This version is the stoutest one yet with tremendous bone and massive back and hip shape plus excellent hair all over. They really need to keep one of these daughters but when they are this good it's hard not to share!

Reality Farms



Lot 66

## Cliffsides 54 R Heidi 2353

Reg AHA Cow P43358739 Calved: 4/02/12

THM DURANGO 4037

GLENVIEW 4037 SILVERADO 8788 ET

H MISS WRANGLER 6052

PW VICTOR BOOMER P606

LAGRAND HEIDI 54R ET

BLAIR-ATHOL 20X HEIDI 26J

Bred to calve January 21, 2014 to Carpe Diem

A good hipped, good-haired Hereford with excellent balance, this registered purebred is sweet necked and really gentle. You won't have to wait long for her Carpe Diem to arrive and she should really compliment her. Seize the day!

Reality Farms



Lot 67

## TJSC Ruby 61Z

Reg 62.5% ASA Cow 2648437 Calved: 3/09/12

SVF STEEL FORCE S701

ZKCC CHOPPER 844U

MS MEYER 31S1 OF TH

MAXIMUS 391

TJSC MAXI 8X

835

AI 4/22 to Daddy's Money - PE to Daddy's Money - Safe-in-calf

Tested THF/PHAF

The coolest combination of Simmental goodness and required look, this beautiful baldy is backed by a top donor at Jones Show Cattle, OH. She should have been shown with her sweet combination of leading depth, ideal structure, and one of the best necks you've seen on this pedigree. She'll show you Daddy's Money!

Toile Family Show Cattle



Lot 68

# Holiday Classic 19

*The Bred Heifer Offering – Young Holiday Treats!*



Lot 69



## PY Zoe 50Z

Reg 50% ASA Cow 2774129

WSJ ENCORE

JF FOUNDATION 8010U

TRIPLE C EMPRESS N3063L

ULTRA DREAM CATCHER 97U

DAINES ZOE 59X

74S

Calved: 10/02/11

**AI 4/19 to Daddy's Money – PE to Daddy's Money – Safe-in-calf**

Tested THF/PHAF

*Awesome size and construction from a dam that was the Champion Percentage Simmental of the 2012 Iowa State Fair, this star-headed powerhouse will rank with the best bred heifers Brent Tolle has ever brought to the Holiday Classic. Her structure is perfect and she is so balanced and pleasing to the eye that she could win now. Perfectly sized and built with plenty of shape and power, you never go wrong when you start like this!*

Tolle Family Show Cattle



Lot 70

## Miss Sexy 464Z

Reg 50% ASA Cow 2645551

Calved: 3/15/12

CNS DREAM ON L186

SVF STAR POWER S802

SVF SHEZA STAR N902

JGCC BLACK PEARL

JBT MISS PEARL

JBT ANGUS 464

**AI 4/22 to Daddy's Money – PE to Daddy's Money – Safe-in-calf**

Tested THF/PHAF

*From the \$21,000 Lot 1 donor in our 2012 Holiday Classic that now works for Martin, IN, and Schumaker, IL, this double-clean workhorse is built like mama makes them: extra wide, super sound, and totally versatile. She is a full sister to Megan Hunt's Ohio State Fair and Ohio's BEST winner and a brother was the Grand Champion Steer of the Tennessee State Fair. This heifer is huge hipped and great bellied with the ideal size and structure to make Daddy's Money and so many more work just right!*

Tolle Family Show Cattle



Pearl





# Daughters and Embryos from Dixie Erica 258!



Dixie Erica 258 – The dam of Lot 71

## Bainridge Dixie Erica 85Z

Reg. 50% Maine-Anjou Female Calved: 1/05/12

SIRE: DRAFT PICK  
DAM: DCC JSO DIXIE ERICA 258

**Bred to calve December 2, 2013 to Jesse James**

*A real foundation F1 Maine-Anjou by the great Draft Pick, this is a beautiful Dixie Erica that will calve by sale day. She is softer, smaller, and cooler than you might expect and she should be so great in production. Her disposition is ideal and her udder quality will make you blush plus she is flat boned and straight haired. We will be hearing from this one before long!*

Bainridge & Goff Show Cattle



Lot 71A

## Bainridge Dixie Erica 127Y

Reg. 50% Simmental Female Calved: May 2011

SIRE: JADE'S DREAMWORKS (DREAM X RF BLACK JADE 950N)  
DAM: DCC JSO DIXIE ERICA 258

**Bred to calve January 9, 2014 to Broker**

*More of the good stuff from Dixie Erica 258 – this time with a Simmental flavor – this young beauty blends the strength of RF Black Jade with that of the Dixie Erica tribe. She is built right with a wide, round rib, excellent structure and udder shape, plus an overall attractive and problem-free design that should yield quality with everything – including this Broker that is due right after you get her unloaded!*

Bainridge & Goff Show Cattle



Lot 71B

## Embryos of DCC Jso Dixie Erica 258

Reg. Angus 14883259

DONOR SIRE: DCC JUST SO 833J (EMBLAZON X ANCHOR)  
DONOR DAM: DCC DIXIE ERICA 001 (FREESTYLE X ANCHOR)

**Lot 71AA – Three embryos by Irish Whiskey**

**Lot 71BB – Three female embryos by Irish Whiskey**

**Lot 71CC – Three embryos by Meyer 734**

At least one 90-day confirmed pregnancy per package is guaranteed when terms are followed

*The first natural calf from the amazing DCC Dixie Erica 001, the donor dam of Lot 16 and over \$600,000 in progeny sales, this powerful cow was a featured embryo donor in our 18th Holiday Classic. She is back again with a great selection of daughters selling here plus recent updates including a \$10,500 heifer by Irish Whiskey that sold in a 2013 Matt Lautner Sale. Dixie Erica 258 is a real Angus powerhouse!*

RICHARD JENKINS



Lot 72



Lazy H Last Chance S20

## Lazy H Last Chance Z78

Reg 50% ASA Cow 2755358 Calved: 3/15/12

SAV 8180 TRAVELER 004  
 SAV 004 TRAVELER 4836  
 CHAMPION HILL LADY 2245  
 CNS DREAM ON L186

LAZY H LAST CHANCE S20  
 SS KATE M821

**Bred to calve January 19, 2014 to Mr HOC Broker**

*By the noted Champion Hill sire "Gator" whose full sister produced Lots 56A and 56B, this half-blood Simmental is super fronted and great hipped. Her dam is a former Senior Champion Simmental Female of the National Western Stock Show that brought \$12,500 at Lazy H Farm, OH, and several siblings have been consistent winners as well with one selling for \$26,000.*

Goff Show Cattle/Double R Simmental/Prestige Show Cattle



Lot 73

## HEIL GSC Magic 211Z

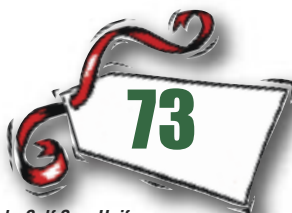
Reg. 50% Simmental Female Calved: 2011

SIRE: **MO MAGIC**  
 DAM: **ENCORE X ANGUS**

**Bred to calve December 24, 2013 to Grandmaster – Prob. Calf Sex: Heifer**

*A perfect half-blood Simmental by the winning sire, Mo Magic, this special heifer will bring her first present just when Santa is making his rounds. It should be a heifer calf – she was bred with sexed female semen – and it should be a good one because this young one is built right and bred to the hilt. Her young dam is a donor at Goff Show Cattle and her second dam was Grand Champion SimAngus of the 2007 North American International for Maplecrest Farm, OH. Her depth, bone, and structure are as good as they can be and she looks like the next donor in this tested line of cattle!*

Goff Show Cattle & Heil Farms



Lot 74

## Hara's Miss Liberty

Reg PB ASA Cow pending Calved: 2/01/12

CNS DREAM ON L186  
 STF SHOCKING DREAM SJ14  
 STF MISS J0114  
 WAGR DREAM CATCHER 03R

MISS LIBERTY 0120X  
 KA TCF INDEPENDENCE S30L

**Bred to calve February 1, 2014 to SCC First and Goal – Prob. Calf Sex: Heifer**

*Your first chance to access the new Hara donor, Miss Liberty 0120X, here is a powerful purebred Simmental baldy with a first heifer calf on the way! She is built right and developed from a pedigree that blends Dream Catcher, Power Drive, and the famous Hart Hollywood Queen. Bred with sexed heifer semen to the red-hot SCC First and Goal!*

Hara Farms





## Shegogs Ms Ness 2

Reg 50% ASA Cow 2651136 Calved: 11/02/11

NICHOLS LEGACY G151

CNS DREAM ON L186

CNS SHEEZA DREAM K107W

RITO 2 878 OF 2536BVND878

SHEGOG 9A12 OF 2-878-B

RITA 9A12 OF E511 205

**Bred to calve March 29, 2014 to Jesse James**

*A beautiful daughter of a beautiful cow, here is a great chance for you to access the producing power of Shegog Farms' great Ness family. Her dam was an Eastern Regional Champion and she blessed this daughter with fantastic depth, dimension, and true mobility. What a great investment this will make!*

Shegog Farms



Lot 75

## Wheeler/KNKC S240 Lutster

Reg 50% ASA Cow 2642441 Calved: 10/19/11

EXAR LUTTON 1831

PLAINVIEW LUTTON E102

PLAINVIEW PRIDE C123

CNS DREAM ON L186

GLS/GF SCARLET S240

MISS LUCKY

**Bred to calve January 30, 2014 to I-80**

*The first of two impressive cow prospects from Scarlet S240, a Frozen Gold donor and a former \$39,000 feature of The One Simmental Sale, these sisters are loaded with maternal power. This was a good flush that also produced a full sister that was selected as the Grand Champion SimAngus Female of the 2013 Keystone International. This heifer is really built right with excellent shape, width, and a totally sound and versatile build.*

K&K Cattle Company & Wheeler Show Cattle



Scarlet S240



Lut x Scarlet S24

## Wheeler/KNKC 240 Lut Girl

Reg 50% ASA Cow 2751510 Calved: 5/21/12

EXAR LUTTON 1831

PLAINVIEW LUTTON E102

PLAINVIEW PRIDE C123

CNS DREAM ON L186

GLS/GF SCARLET S240

MISS LUCKY

**Bred to calve February 20, 2014 to I-80**

*Another product of a great flush of the \$39,000 Frozen Gold donor, Scarlet S240, this heifer is sure to make a sweet cow. Her dam is a remarkable female and this heifer has the right build and the right pedigree to win in so many ways. Both calves from these females may be registered as both MaineTainer or percentage Simmental prospects.*

K&K Cattle Company & Wheeler Show Cattle



Lot 76B



**SF 63**

Female

Calved: September 2011

SIRE: IRISH WHISKEY

DAM: 9A2 ANGUS DONOR

**Bred to calve January 19, 2014 to I-80**

*A strong shot of Whiskey from the well-proven 9A2 donor formerly of Shegog/Bainridge and now working for Larry Simmons Farms, OH, this is one of many you need to come to see this year! This Whiskey will be a beautiful cow with her powerful, properly-sized body and no-miss structure plus a pedigree that is loaded with milk and maternal strength and also produced the Lot 46 donor selling here. Her disposition is perfect and you will love her when she calves this time and each year after!*

Shegog Farms

Lot 77



**Bainridge Rita 75Z**

Female

Calved: 1/08/12

Sire: GCC UNTOUCHABLE (by Irish Whiskey)

Dam: RITA 7X59 (Angus)

**Bred to calve December 13, 2013 to Jesse James**

*Blending two of our favorite lines, here is a young Irish Whiskey granddaughter from Rita 7x59, the most productive of the Angus donors that used to work at Bainridge. This one is going to make a special cow with her balanced, attractive, and moderate-sized build that will work so well with the popular sires of today. She has more hair than you might expect and you never need to worry about milk and fertility with this line of females. Due before the auction to Jesse!*

Bainridge & Goff Show Cattle

Lot 78A



**Bainridge Rita 108Y**

Female

Calved: 1/05/11

SIRE: IRISH WHISKEY

DAM: RITA 7X59 (ANGUS)

**Bred to calve January 23, 2014 to Monopoly 4**

*Expect this young Rita to make a gorgeous cow at maturity! She is another maternal gem from Rita 7x59 and this time by Irish Whiskey himself. She has a beautiful shoulder design and neck carriage with the perfect feminine stoutness. She is very young but she Al'd again early and will be a great value buy now!*

Bainridge & Goff Show Cattle

Lot 78B





# Holiday Classic 19

*The Bred Heifer Offering – Young Holiday Treats!*



Lot 79



## ELF Ms Premium Z205

Reg 12.5% ASA Cow 2685838  
3/12/12

Calved:

RDDS HIGH OCTANE 1905T

**APEX PREMIUM PLUS U805X**  
MISS 802U

**S601 (ANGUS X)**

**AI 4/15 to Daddy's Money – PE to Daddy's Money – Safe-in-calf**  
Tested THF/PHAF

*Whale bodied and giraffe necked, this is a unique favorite that should be a killer in production. She offers an outcross, double-clean pedigree with a beautiful blaze and a look you cannot ignore. Give her a look and you will agree that you do not find too many built like this heifer that will deliver one of the first by the red-hot Daddy's Money!*

Tolle Family Show Cattle

## TFSC 13

Female

Calved: Spring 2012

SIRE: **CURTAIN CALL (BY HEAT WAVE)**  
DAM: **HAIRY X 20/20 VISION**

**AI 4/15 to Daddy's Money – PE to Daddy's Money – Safe-in-calf**  
Tested THG/PHAC

*A freak on a leash that looks like she is ready to hit a home run with Daddy's Money, this new age beauty was produced from a past Holiday Classic female that now works for Sinclair Cattle Company, IN. She has enough hair for a trio of heifers and she is so good necked and big legged that she's got to work!*

Tolle Family Show Cattle



Lot 80



Lot 81

**STNW 162Z**

Reg 5.89% ACA Cow 363799

Calved: 4/19/12

HEAT WAVE

**MONOPOLY**

WTF RUTH MEDINA (HAZEL)

WHO MADE WHO 411F

**RAINEY 21R**

SHAZNAY 21H

**AI 5/26 to Daddy's Money – PE to Daddy's Money – Safe-in-calf**

Tested THC/PHAF

*Check the powerful shape and pleasant structure of this heifer whose dam is a favorite donor cow. She has the massive belly shape, dense hair, and pretty udder that the best Monopoly daughters have and she looks like a real cow. Her first calf will be by the NAILE and American Royal Grand Champion, Daddy's Money!*

Tolle Family Show Cattle



Lot 82

**MRGN Foxy Lady 201 ET**

Reg 43.75% ASA Cow \*xAR56903

CaVed: 3/09/12

WHO MADE WHO 411F

**SIMPLE MATH**

MEYER 734

DF VEGAS 310M ET

**RF MISS PARIS**

RF MISS STUFF 340

**Bred to calve February 21, 2014 to I-80**

Tested THC/PHAF

*This winning show heifer is a maternal sister to a former \$25,000 top seller of the Guyer Chosen Few Sale and she was selected as the Champion Shorthorn+ Heifer of the 2013 Kentucky State Fair for Sheldon Burks, KY. She should make a club calf machine with her intense shag-nasty, balanced profile and cool look.*

Tolle Family Show Cattle



Lot 83

**STNW Lexi 144Z**

Reg 75% AMAA Cow 430571

Calved: 3/01/12

COWAN'S ALI 4M

**GOET I-80**

BPF MILEY 80T

BK LIFELINE 258J

**LUNA**

ANGUS

**AI 4/23 to Optimus Prime – PE to Daddy's Money – Safe-in-calf**

Tested THF/PHAF

*The high Maine you need with better hair, better bone and the great look we all crave, this heifer is double-clean and due with some real versatility by either Optimus Prime or Daddy's Money.*

Tolle Family Show Cattle







Lot 84



### HHB Lady 232Z

Reg 50% AMAA Cow 432353 Calved: 2/14/12

COWAN'S ALI 4M

GOET I-80

BPF MILEY 80T  
LAFLINS INTREPID 7812

HB LADY 025X

HB LADY 72U

**AI 4/15 to Daddy's Money – PE to Daddy's Money – Safe-in-calf**  
Tested THF/PHAF

*A beautiful donor prospect that should blend so easily with anything you like, this heifer was Brent's pick of the 2012 crop at Horsley Bros, IL. She is built to show with perfect feet and belly shape and the soft, full-hipped, balanced design that makes them all come running. Backed by the time-tested strength of the Lady cow family, this MaineTainer is ready to rock!*

Tolle Family Show Cattle

## See Daddy's Money on Display at the Auction!

### **The 2013 American Royal and North American International Grand Champion**

*A featured service sire of the offering*

### Daddy's Money 55Z

75% Maine-Anjou 427013  
Polled – THF/PHAF – BW: 58

SIRE: I-80

DAM: HAA WISDOM X DR WHO

Bred by Pettigrew, IN  
Owned by Tolle/Woodlawn/Jones/Griswold  
Semen Available





**Daines Carly 73Z**

Reg 25% AMAA Cow 432233 Calved: 4/02/12

CMAC HARD CORE  
DAINES SIRE HARD CORE 35W  
ANGUS

ANGUS

*Bred to calve February 5, 2014 to Daddy's Money*  
Tested THF/PHAF

*Cool, stout, sound and versatile, this is the right kind of MaineTainer to build with. She'll make a gorgeous cow with upgraded muscle and an ideal front end plus a double-clean pedigree to breed your way.*

Tolle Family Show Cattle

Lot 85



**STNW Alicia 147Z**

Reg 25% AMAA Cow 431233 Calved: 3/14/12

COWAN'S ALI 4M  
BOJO  
HEAT SEEKER X ALIAS

K-BAR MEYER 734 X ANGUS

*AI 4/25 to Daddy's Money – PE to Daddy's Money – Safe-in-calf*  
Tested THF/PHAF

*Sweet balance and style come with this TH-Free Bojo heifer that moves great and gives you a sweet look all of the time. She is due with one of the first calves by the winning sire and OMAA top seller, Daddy's Money!*

Tolle Family Show Cattle

Lot 86



**PHY 25Z**

Reg 87.5% AMAA Cow 431808 Calved: 4/10/12

FJH SPECIAL EDITION 505M  
DAINES DR SEUSS 79P  
DAINES MISS BILT 19E  
WHO'S THE KING 42M  
PHY MISS 25S  
ZTA BLACK FETTE 90D

*AI 4/25 to Daddy's Money – PE to Daddy's Money – Safe-in-calf*  
THF/PHAF

*Outcross, purebred Maine genetics by Dr Seuss, the sire of the Champion Maine Heifer at the 2013 Aksarben, this one should be easy to use in a variety of ways. She is due with a first high-Maine calf and you might breed her back that way but she is pretty and sound enough with added bone and shape to go a variety of ways.*

Tolle Family Show Cattle

Lot 87





# Holiday Classic 19

*The Bred Heifer Offering – Young Holiday Treats!*



Lot 88



## JMCB Ms Trading Spaces

Female Calved: 3/25/12

SIRE: **TRADING FAVORS**  
DAM: **WHO MADE WHO X AN**

*Bred to calve February 23, 2014 to Jesse James*

*A big legged club calf machine that is bred for quick returns, this heifer is a favorite of many. She is so shaggy and soft hiped plus built with extra width and power. Load up on your favorites this year like this bred heifer that is perfectly mated to Jesse for a quick payoff!*

Beckett Cattle

## Welcome Back to The Holiday Classic!

*Happy Holidays!*

*Thank you for your interest and for 18 years of great support of this unique event. It is my pleasure to invite you back to Zanesville and to present this impressive lineup of cattle to you. Over the years, the cast of characters has changed a little from time to time but The Holiday Classic commitment to quality has always remained. Now more than ever, you need quality to make your program work.*

*Thank you to these breeders for bringing out another great lineup for your appraisal. This is a deep offering – perhaps as deep as we've ever offered – with diverse pedigrees and quality on every page of the catalog. Some will sell low and some will sell high but I know there will be real value on so many levels; there always is. Just like their predecessors, I know we will be hearing from some of these cattle for years to come. Wouldn't it be better if the ones we hear from work for you?*

*The world needs more breeders of better stock. Great opportunities exist for those that make the investments of time, knowledge, and effort; it's simple supply and demand. This is a historically great time for agricultural producers - most especially cattlemen – and it sure is about time. These are "the good ole' days" and these cattle will make them even better. Upgrade your program with us this year and treat yourself to some new genetics that are set to deliver for you right away.*

*Enjoy the Holidays. Do your homework. Then come early and get a comfortable seat because there will be great profit opportunities from start to finish. The Holiday Classic Team can't wait to see you and I know you'll enjoy your trip!*

**Here's to 19 more Holiday Classics!**

**Craig Reiter**  
**Holiday Classic Auction Manager**  
**419.862.0117 (office) – 419.350.9159 (sale day)**



The offering may be seen anytime by contacting any of the owners and will be on display at the auction site beginning December 27. See the owner listing on page 47 for contact information.



Lot 89



**TFSC 18**

Female Calved: Spring 2012

SIRE: **WHO MADE WHO**  
DAM: **HEAT WAVE X CUNIA**

*AI 4/22 to I-80 – PE to Daddy's Money – Safe-in-calf*  
Tested THF/PHAC

*As good as you want them and maybe better, this young donor is something to see this season! She is so sound and lovely but still filled with the necessary width and power that it takes to get it done. You get the look of Who Made Who with the hair and power of Heat Wave plus the ruggedness of Cunia yet no TH obstacle to breed around. Treat yourself to a young superstar here!*  
Tolle Family Show Cattle



Lot 90



**TFSC 10**

Female Calved: Spring 2012

SIRE: **TOTAL SOLUTION**  
DAM: **MEYER 734 X ANGUS**

*AI 4/16 to Daddy's Money – PE to Daddy's Money – Safe-in-calf*  
Tested THF/PHAF

*When you find them built and bred this way you just need to own them and then let the pieces fall into place. This Total Solution x 734 combination is built for elite production with the softer, hairier, smoother build that only gets better each time she calves. Safe to Daddy's Money, it is hard to find them this shaggy and delightful with no TH or PHA in the pedigree. Load up!*  
Tolle Family Show Cattle



## STJR 028E

Female Calved: Spring 2012

SIRE: EYE CANDY

DAM: WHO MADE WHO X GRAND SLAM

**Bred to calve February 16, 2014 to Ali 2**

*The cowman's kind and a real gem, this is the first calf from a young STJ donor that will be heard from. This heifer is super stout yet super sound with a unique and tested pedigree. With her soft, hairy, sound structure she should make a strong producer for years and she will get you going quickly with Ali 2!*

STJ Ruffing Cattle Company



Lot 91

## JMCB Northern Style 180Z

Female Calved: April 2012

SIRE: NORTHERN IMPROVEMENT

DAM: I AM LEGEND X 6807

**Bred to calve April 29, 2014 to Jesse James**

*A special youngster here that has the look and the pedigree to create something special, this April heifer is freak necked and so good at the ground. Combine her with bulls like Jesse James that will add mass and power because – like her famous sisters by Northern Improvement – this type of front end shape and balance are so hard to find.*

Beckett Cattle



Lot 92

## JMCB Loaded Lady 173Z

Female Calved: March 2012

SIRE: HEAT WAVE

DAM: MIMMS LOADED LADY 11 (LOADED GUN X FULL FLUSH)

**Bred to calve February 24, 2014 to Jesse James**

*Sweet pattern and promise from The Loaded Lady, a former Holiday Classic highlight that is now a feature of the Donors Unlimited lineup, this heifer is smooth and correct with a great calf on the way. Her dam has been the consistency queen over the years and with a long string of top calves like Reserve Grand Steer of the 2004 Kentucky State Fair, the Reserve Grand KY Steer of the 2005 Kentucky Expo, several jackpot winners, and more than one calf over \$10,000.*

Beckett Cattle



Lot 93

## Brandy 35Z

Female Calved: 3/02/12

SIRE: THRILLER

DAM: COWBOY CUT X SAUGAHATCHEE

**Bred to calve February 3, 2014 to Jesse James**

*From the Brandy foundation at McCauley Cattle, this Thriller daughter is TH-Free by pedigree but so hairy and slim necked. She is built right to work with Jesse!*

McCauley Family Cattle



# Irish Whiskey Embryos



## Embryos of NTC Donor 0610

DONOR SIRE: **CHILL FACTOR**  
DONOR DAM: **POWERS ANGUS**

**Lot 100A – Three embryos by Irish Whiskey**

**Lot 100B – Three embryos by Irish Whiskey**

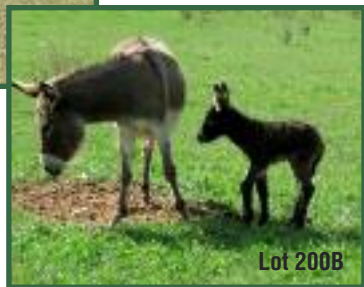
*Hara Farms acquired this donor as their choice of the proven Chill Factor daughters at Thrasher Cattle, OH, the home of Irish Whiskey. Donor 0610 was the top producing Chill Factor on the ranch with several high-selling Irish Whiskey daughters with the shown here selling for \$25,000 as the featured Lot 1 in the former Exposure Sale.*

At least one 90-day confirmed pregnancy per package is guaranteed when terms are followed

Hara Farms

# A Holiday Classic Tradition

*Working Calf-Breaking Donkeys*



## JJ

**Five year old male breaking donkey**

*JJ is a not our typical breaking donkey. He is a notch bigger than usual but it works in his favor because he has been perfect for breaking some tough calves and more than one 1,000+ pound bull. Last year he broke some steers for breeders that they had customers send back claiming they were un-breakable. He is suitable for children of any age, can also run with sheep for coyote protection, and is broke to ride. What could be better?*

Hoffman Show Stock



## Jenna

**Six year old female breaking donkey**

**Sells with a female foal born 9/13/13**

*Jenna is a six year old that is very docile and is a joy to be around. She can break extremely well and was used until three months before she foaled.*

Hoffman Show Stock



# The 19th Holiday Classic Crew

**Bainridge**

Bain Goff  
Norwich, OH  
740-319-7321

**B&J Angus**

Donald Michael  
Mt Solon, VA  
540-421-9973

**Beckett Cattle**

Joe Beckett & Family  
Brooksville, KY  
606-782-1180

**Black Gold Cattle Company**

David Himburg and Family  
Petersburg, MI  
734-576-0387

**Goff Show Cattle**

Jason Goff  
Zanesville, OH  
740-819-8925

**Hara Farms**

Mark, Jeff & Charles Hara  
Dublin, OH  
937-478-8431

**Hoffman Show Stock**

Barry & Stephanie Hoffman  
Kansas, OH  
419-680-1314

**K&K Cattle Company**

Chris & David Korn and Families  
Hyndman, PA  
301-707-1727

**McCauley Family Cattle**

Mike, Matt, & Eric McCauley  
Cambridge, OH  
740-439-5318

**Reality Farms, LLC**

Roy, Judy, & Matt Jackson  
New Castle, KY  
Matt: 502-667-0142

**Richard Jenkins Family**

Abingdon, VA  
276-608-8300

**Shegog Farms**

Tim Shegog  
Cambridge, OH  
740-255-0034

**STJ Ruffing**

Dennis & Diana Ruffing  
Republic, OH  
419-618-9278

**Tolle Family Show Cattle**

Brent Tolle & Family  
Taylorsville, KY  
502-905-7831

**Tooms Show Cattle**

Bert & Amy Tooms  
New Concord, OH  
740-255-0003

**Woodlawn Farms**

The Lehnert Family  
Lawrenceburg, TN  
931-629-0475

*Please contact any consignor or the sale manager should you have any questions regarding the sale offering of if you would like to arrange a pre-sale visit.*

Happy Holidays to You and Yours!

THE HOLIDAY CLASSIC 2013



PO Box 305  
Perrysburg, Ohio USA 43552  
www.primetimeagrimarketing.com



**DATED MATERIAL — Do Not Delay**



**Saturday, December 28, 2013  
Zanesville, OH**

*Featuring the Total Dispersal  
of Black Gold Show Cattle!*

