

# EXCLUSIVE

*genetics*

to benefit the Stanley E. Stout  
Livestock Marketing Center  
at Kansas State University



Offering elite genetics from the best purebred producers nationwide  
40+ lots from multiple breeds

*the stoutest offering in the cattle industry*

**K**

**OCTOBER 28, 2011 • 6:00 PM (CT)**  
**Wagstaff Sale Center at the American Royal**

# EXCLUSIVE *genetics*

What a fitting tribute to the legacy of the world's greatest auctioneer - an auction sale center on the campus of his beloved Kansas State University. If only Stout could be on the block to preside over future sales held there with his usual boisterous bravado!

If you knew Stanley, you knew his passion for livestock, auctions, youth and K-State. Please join us Friday, October 28th at one of his favorite stomping grounds, the American Royal in Kansas City. The evening will kick off at 5 p.m. with another of his favorite events - the social hour! The 6 p.m. auction will feature a variety of embryos, flushes, choices of the herd and semen consigned by Stanley's friends and clients, who had him conduct their sales over the years.

Our fundraising efforts are getting close to seeing this tribute to Stanley completed. This multi-functional facility will bear Stanley's name, in honor of his lifetime support of K-State, the Department of Animal Science and the livestock industry, along with the names of all donors. Checks for this auction will be made to the KSU Foundation - Stanley E. Stout Marketing Center.

Please join Stanley's family, lifelong friends and colleagues for this tribute on October 28th. Stick around afterward for more stories, and hear the lore of one of the most fun-loving characters of our lifetime. Just as when we were with him, there will be lots of smiling and laughter as we celebrate another chapter of his life!

See you there,

Greg Hubert • Joe Rickabaugh • Guy Peverley • Matt Caldwell  
Doug Paul • J. Neil Orth • Justin B. Stout

*the stoutest offering in the cattle industry*

# EXCLUSIVE *genetics*

to benefit the Stanley E. Stout  
Livestock Marketing Center  
at Kansas State University

## Schedule of Events:

Social and Drinks 5:00 PM  
Sale 6:00 PM

## Terms and Conditions:

The terms of the sale are cash or check payable at the close of the sale. Lots will be sold to the highest bidder with the auctioneer settling any disputes. Announcements at the sale by the auctioneer take precedence over statements in the sale book.

## Delivery:

Delivery cost and arrangements are the responsibility of the purchaser.

## Guarantee:

All guarantees are between the buyer and the donor.

## Absentee Bids:

Absentee bids by persons unable to attend the sale may be placed by phone with any of the sale staff.

## On-Site Televisions Provided By:

DV Auction, Brett Spader  
785-633-5512

## Sale Staff:

Justin Stout, Auctioneer  
913-645-5136  
Greg Hubert, Hubert Cattle Sales  
785-672-7449  
Joe Rickabaugh, *Hereford World*  
785-633-3188  
Matt Caldwell, *Angus Journal*  
913-755-1105  
Doug Paul, *The Stock Exchange*  
405-820-3982  
Guy Peverley, *High Plains Journal*  
785-456-4390  
Neil Orth, American Int'l Charolais Assn.  
210-872-2511

## View Sale Broadcast Online:

# LiveAuctions TV

Real-time bidding is available via the internet for this sale. Live audio and video will allow buyers to bid just as if they were present at the sale. Buyer account must be created prior to the sale. Please visit [www.liveauctions.tv](http://www.liveauctions.tv) to create an account and be approved for a buyer number. For more information, please contact Brad Fahrmeier 816-329-9241 or [bfahrmeier@aol.com](mailto:bfahrmeier@aol.com)

**OCTOBER 28, 2011 • 6:00 PM (CT)**  
**Wagstaff Sale Center at the American Royal**

## 2 Bar Angus embryo package



2 Bar Objective 6654 - Dam of Lot 1 donor.



Summitcrest Complete 1P55 - Sire of Lot 1.

### 1 Four Frozen Embryos

#### Purebred Angus Embryos

C F Right Design 1802  
**Summitcrest Complete 1P55**  
 14850409

Summitcrest Elba 1M17  
 Riverbend Mile High 3718  
**2 Bar Mile High 9339**  
 16407211

2 Bar Objective 6654

Bon View New Design 1407  
 Vision HF Blackcap 0015  
 Vermilion Dateline 7078  
 Summitcrest Elba 1F43  
 Bon View New Design 1407  
 G A R Precision 1919  
 S S Objective T510 0T26  
 2 Bar 208 New Design 4432

	BW	WW	YW	Milk	CW	Marb	RE	Fat	\$W	\$F	\$G	\$B
S	+2.5	+54	+99	+30	+43	+.63	+1.08	+.004	+31.14	+36.68	+38.49	+75.49
D	+2.0	+54	+101	+31	+29	+1.05	+.62	-.002	+28.59	+38.74	+43.12	+76.37

2 Bar Angus is offering four embryos by the popular ABS Global sire Complete out of an awesome young donor that earned a whopping 127 IMF ratio. The donor dam of this mating is out of a female that sold for \$6,000 as a weaned heifer through a past Texas Angus sale and stems from a foundation 2 Bar donor. This genetic combination should produce some extremely balanced and complete progeny with a pleasing phenotype and a breed leading EPD profile, if they were on the ground now they would be built in with EPDs of 2.3 for BW, 54 for WW, 100 for YW, .84 for Marb, .85 for RE and over +75 for \$Beef.

#### 2 BAR ANGUS

Steve & Laura Knoll

4020 US Hwy 385, Hereford, TX 79045

806-334-7444 • sknoll@amaonline.com • www.2barangus.com

# Benoit Angus embryo package



E&B Blueprint 691 - Full brother to Lot 2 donor dam.

## 2a CHOICE Five Frozen Embryos

### Purebred Angus Embryos

Emulation N Bar 5522  
**N Bar Emulation EXT**  
 10776479

Emulation 31  
 Ankony 8F78 Lass 8F275  
 Emulation 31  
 Primrose N Bar 9962

N Bar Primrose 2424

	BW	WW	YW	Milk	CW	Marb	RE	Fat	\$W	\$F	\$G	\$B
S	+1.8	+42	+78	+18	+27	+0.21	+0.05	+0.041	+28.10	+20.49	+9.22	+38.02

## 2b CHOICE Five Frozen Embryos

### Purebred Angus Embryos

S A V Final Answer 0035  
**S A V Pioneer 7301**  
 15688392

S A V Blackbird 5297  
 E&B 1680 Precision 1023

**E&B Lady 1023 Precision 919**  
 16454437

E&B Lady 878 New Design 441

Sitz Traveler 8180  
 S A V Emulous 8145  
 Boyd New Day 8005  
 S A V Blackbird 1082  
 G A R Precision 1680  
 E&b 6807 Lady Traveler 61  
 Bon View New Design 878  
 E&b 5706 Lady Arbitrator 824

	BW	WW	YW	Milk	CW	Marb	RE	Fat	\$W	\$F	\$G	\$B
S	+1.7	+61	+114	+29	+24	+0.38	+0.71	+0.032	+30.53	+49.63	+27.36	+61.33
D	+1	+54	+94	+21	+34	+0.39	+0.67	+0.002	+31.27	+31.60	+28.54	+62.55

Selling choice of five embryos sired by EXT or SAV Pioneer. Donor dam is a full sister to the ABS Global sire E&B Blueprint. 21 bulls sired by Blueprint in 2011 Benoit sale averaged \$4620. The sire of 919, E&B Precision 1023, has the best combination of \$W and \$B of any bull in the main sire summary. 919 posted individual weaning, yearling and ribeye ratios of 115 with a birth ratio of 98. These embryos represent true value to any segment of the beef industry. Embryos stored at Cross Country Genetics.

### BENOIT ANGUS

Everett & Bonnie Benoit

621 Hwy 36, Esbon, KS 66941

785-725-3231 • ebbenoit@ruraltel.net • www.benoitangus.com





E&B Lady Precision 16 - Dam of Lot 3.



G A R New Design 5050 - Sire of Lot 3.

### 3 Heifer Pregnancy

#### Purebred Angus Heifer Pregnancy

B/R New Design 036  
**G A R New Design 5050**  
 13728513

G A R Precision 706  
 G A R Precision 1680

**E&B Lady Precision 16**  
 13913529

E&b 6807 Lady Traveler 61

V D A R New Trend 315  
 B/R Blackcap Empress 76  
 G A R Precision 1680  
 G A R Ext 2114  
 Tehama Bando 155  
 9J9 G A R 856  
 D H D Traveler 6807  
 Lady 963 Dividend 404

	BW	WW	YW	Milk	CW	Marb	RE	Fat	\$W	\$F	\$G	\$B
S	+ .9	+56	+109	+38	+34	+ .87	+1.05	+ .014	+37.19	+46.34	+43.25	+80.53
D	+3.8	+41	+75	+21	+31	+ .37	+ .60	- .021	+21.73	+18.01	+29.65	+60.28

Evans Farms is offering a guaranteed clean heifer pregnancy by G A R New Design 5050 out of the visually stunning full sister to the popular ABS Global sire Precision 1023. The donor dam of this pregnancy has a production record of 4 at 95 for birth with 5 at 101 for weaning and 3 at 100 for yearling as well as 21 at 101 for RE. This heifer calf should be built in with an EPD profile that reads; CED 9, BW 2.4, WW 48, YW 92, Marb .63, RE .84 and over +70 for \$Beef.

**EVANS FARMS**

Bill & Nanette Evans

112 Beach Drive, Stephenville, TX 76401

254-967-2660 Aaron Kiser, manager • www.evansfarm.com

# Goode Angus embryo package



Goode Expectation 433 - Dam of Lot 4 donor dam.



Summitcrest Complete 1P55 - Sire of Lot 4.

## 4 Three Frozen Embryos

### Purebred Angus Embryos

C F Right Design 1802  
**Summitcrest Complete 1P55**  
 14850409

Summitcrest Elba 1M17  
 G A R Solution

**Goode Solution 753**  
 15734817

Goode Expectation 433

Bon View New Design 1407  
 Vision HF Blackcap 0015  
 Vermilion Dateline 7078  
 Summitcrest Elba 1F43  
 S S Traveler 6807 T510  
 G A R New Design 50  
 G A R Expectation 4915  
 G A R Max 659

	BW	WW	YW	Milk	CW	Marb	RE	Fat	\$W	\$F	\$G	\$B
S	+2.5	+54	+99	+30	+43	+ .63	+1.08	+.004	+31.14	+36.68	+38.49	+75.49
D	+1.0	+54	+92	+28	+32	+ .91	+ .60	-.010	+32.87	+29.60	+41.56	+74.26

Goode Angus is offering three embryos sired by the popular ABS Global sire Summitcrest Complete out of a daughter of the top producing \$8,500 donor for Pullen Angus, Goode Expectation 433. The donor dam of this mating has one natural progeny turned in to AHIR that ratioed 92 for birth, 110 for weaning and 104 for yearling and she combines an individual IMF ratio of 137 with progeny IMF ratios of 108 on four head. Two flush sisters to Goode Solution 753 were featured lots in the first PDF sale that sold for \$12,000 and \$10,000. If these calves were on the ground they would be built in with an EPD profile that reads; BW 1.9, WW54, YW 95, Marb .77, RE .84 and over +74 for \$Beef.

### GOODE ANGUS

Jimmy & Glennette Goode  
 PO Box 700, Pampa, TX 79066  
 806-665-9432 • jimmy@goodeangus.com • www.goodeangus.com

# Hartley Angus embryo package



Rally Barbaramere Nell 5005 - Dam of Lot 5.



S A V Final Answer 0035 - Sire of Lot 5.

## 5 Six Frozen Embryos

### Purebred Angus Embryos

Sitz Traveler 8180  
**S A V Final Answer 0035**  
 13592905

S A V Emulous 8145  
 B C Matrix 4132  
**Rally Barbaramere Nell 5005**  
 15047453

Rally Barbaramere Nell 3006

G D A R Traveler 71  
 Sitz Everelda Entense 1137  
 Bon View Bando 598  
 S A V Sky Emulous 2124  
 O C C Emblazon 854E  
 CAF Pure Pride Ext 99  
 Sitz Traveler 5556  
 Sitz Barbaramere Nell 1623

	BW	WW	YW	Milk	CW	Marb	RE	Fat	\$W	\$F	\$G	\$B
S	-1.0	+61	+105	+20	+20	+.42	+.38	+.041	+47.98	+40.08	+24.06	+53.14
D	+2.5	+48	+96	+17	+18	+.12	+.40	+.005	+21.53	+35.99	+17.44	+44.38

Hartley Angus Ranch is offering six embryos sired by the popular spread sire from Genex, Final Answer, out of their \$9,500 selection of the 2010 production sale at Evans Farms. The donor dam of this mating is responsible for over \$50,000 in progeny sales at Evans Farms and has daughters working in the Limestone and Buford herds in Oklahoma. Barbaramere Nell 5005 has three progeny turned in to AHIR that ratio 97 for birth with 4 at 101 for yearling and 34 at 103 for RE. The resulting progeny will be soft sided, easy fleshing cattle that have a big spread from birth to yearling, if they were on the ground now they would be built in with a birth EPD of .7 as well as 55 for weaning and 101 for yearling.

### HARTLEY ANGUS

Dwight & Gwen Hartley  
 496 PR 1251, Stephenville, TX 76401  
 903-450-6718 Levi Sasser, manager • levisasser@hartleyranch.net



# Ohlde Cattle Company semen package



D H D Traveler 6807



O C C Emblazon 854E

## 6a SEMEN D H D Traveler 6807

**Purebred Angus Semen**  
**10858958**

**Three Units**

Band 234 of Ideal 3163  
**Q A S Traveler 23-4**  
 Q A S Blackbird Eve 601 1  
 PBC 707 1M F0203  
**Bemindful Maid D H D 0807**  
 Bemindful Maid of R R 1079

BW	WW	YW	Milk	CW	Marb	RE	Fat	\$W	\$F	\$G	\$B
+1.2	+36	+74	+15	+6	+ .15	+ .16	-.024	+23.44	+18.90	+20.66	+34.31

DHD Traveler 6807 has solidified his place in Angus history as a unique sire of low birth - high growth genetics, maternal excellence, superior fleshing ability and excellent carcass traits. His daughters possess extra volume, power and fleshing ability along with moderate size, high fertility and excellent udders. Now deceased, semen is limited.

## 6b SEMEN O C C Emblazon 854E

**Purebred Angus Semen**  
**12514348**

**Twenty Units**

Q A S Traveler 23-4  
**D H D Traveler 6807**  
 Bemindful Maid D H D 0807  
 PBC 707 1M F0203  
**Dixie Erica of C H 1019**  
 Dixie Erica of C H 615

BW	WW	YW	Milk	CW	Marb	RE	Fat	\$W	\$F	\$G	\$B
+ .7	+49	+79	+10	-11	-.04	+ .48	+.004	+37.14	+18.86	+15.46	+10.98

Emblazon has depth, length, volume and muscle. His first progeny has proven to us that Emblazon is a worthy replacement for 6807 in our program. Emblazon has established an impressive set of low birth, superior growth EPDs similar to those of 6807. In addition, he records a scrotal EPD of -.07 with and accuracy of .99. The Emblazon daughters have great fleshing ability and excellent udder quality. We consider his full sister, O C C Dixie Erica 816B, to be the ideal Angus cow and his dam's contribution to our program is unequalled.

### OHLDE CATTLE COMPANY

Tim, Trudy, Jake & Jordan Ohlde  
 1362 2nd. Road, Palmer, KS 66962  
 785-692-4332 • tim-trudy@ohldecattle.com • www.ohldecattle.com

# Stucky Ranch embryo package



Stucky Eisa Erica 7403 - Dam of Lot 7.



G A R Ultimate - Sire of Lot 7.

## 7 Three Frozen Embryos

### Purebred Angus Embryos

**G A R Ultimate**  
15464043

S S Objective T510 0T26

G A R Load Up 1314  
Sinclair Net Present Value

**Stucky Eisa Erica 7403**  
16122530

Circle S Erica Erica 5266

S S Traveler 6807  
S S Miss Rita R011 7R8  
RAB-GAR Load Up 4049J  
G A R New Design 80  
N Bar Prime Time D806  
Ideal 4465 of 6807 4286  
G A R Retail Product  
Circle S Erica Erica 2007

	BW	WW	YW	Milk	CW	Marb	RE	Fat	\$W	\$F	\$G	\$B
S	+2.3	+62	+101	+28	+20	+83	+60	+014	+32.41	+35.56	+39.94	+68.07
D	-.7	+50	+90	+28	+15	+39	+24	+014	+31.54	+29.16	+25.42	+48.53

This powerful embryo mating from the Stucky Ranch combines the predictable Eisa Erica family with the popular, trait balanced sire, G A R Ultimate! This package of time-tested genetics is loaded with maternal efficiency and balanced with performance and end product merit. Selling three embryos. Embryos stored at Cross Country Genetics, Westmoreland, Ks.

**STUCKY RANCH**

Gordon Stucky Family

421 NE 70 Ave, Kingman, KS 67068

620-532-3220 • gordon@stuckyranch.com • www.stuckyranch.com

## Thomas Angus Ranch pick of the herd flush



### 8 Pick of the Herd Flush Opportunity

Thomas Angus Ranch is one of the premier Angus producers in the west. The ranch runs an exclusive AI program for its 1200 head Angus cowherd as well as an intensive ET program, implanting over 1,000 embryos in 2011. The ranch hosts two sales per year in March and October, selling over 600 bulls annually. Rob & Lori are both graduates of Kansas State University. This package is the pick of the herd flush. It includes all available donors at Thomas Angus Ranch with a guarantee of five embryos.

#### **THOMAS ANGUS RANCH**

Rob & Lori Thomas

42734 Old Trail Rd., Baker City, OR 97814

541-524-9322 • [rob.thomas@thomasangusranch.com](mailto:rob.thomas@thomasangusranch.com) • [www.thomasangusranch.com](http://www.thomasangusranch.com)

# Aschermann Charolais embryo package



ACE Ms Crocus 0002 - Dam of Lot 9.

## 9 Two Frozen Embryos

### Purebred Charolais Embryos

LT Wyoming Wind 4020  
**ACE-RC Elko 5224-0860PET**  
 M634396 CR Miss Mac IV 5221

LT Wyoming Wind 4020  
**ACE Ms Crocus 0002 ET**  
 F948097

KC Miss Crocus Maciv 7002ET

Schurrtop 5627  
 LT Chap's Lady 2170P  
 WCR Sir FA Mac 2244  
 CR Miss Duke 172  
 Schurrtop 5627  
 LT Chap's Lady 2170P  
 WCR Sir FA Mac 2244  
 Miss KC Crocus 904

	CE	BW	WW	YW	Milk	MCE	MTNL	SC	CWT	REA	Fat	Marb
S	1.9	1.1	42	62	0	1.1	21	1.3	16	0.32	0.001	0.15
D	-1.8	4.3	31	57	2	7.9	18	1.0	7	0.10	0.015	0.03

The dam of these embryos was a highly successful show heifer and donor dam later in life. She was the Grand Champion Female at three successive State Fairs in 2007 winning the Nebraska, Kansas and Tulsa State Fairs. She was also the 2007 Kansas Junior Charolais Show Grand Champion. She later produced several daughters that won numerous shows.

The sire of these embryos was also a highly successful sire of show champions topping that string with the 2007 AIJCA Junior National Grand Champion as a cow/calf pair and the National Show Champion Cow/calf Pair.

### ASCHERMANN CHAROLAIS

Larry & Peggy Aschermann  
 13467 Dogwood Rd., Carthage, MO 64836  
 417-793-2855 • hayhook@gmail.com • www.aschermanncharolais.com

# Donors Unlimited embryo package



KC Miss Impressed 5145P -  
Dam of Lot 10.



KC Miss Impressed  
5145P -  
Dam of Lot 10.



TR Ms Kaycee 7787T  
- first calf of 5145P.

## 10 Six Frozen Embryos

### Purebred Charolais Embryos

Thomas Oahe Wind 0772ET P  
**TR Mr Fire Water 5792RET**  
M704588

Thomas Swisser Sweet1764ET  
PF FL Duke 9021 P ET

**KC Miss Impressed 5145P**  
F1025731

KCMissDakota Wind 1645ET

LT Wyoming Wind 4020 Pld  
Thomas Ms Camelot 5646  
LHD Cigar E46  
Thomas Ms Bonanza 8698  
PF Impressed 620 P ET  
VCR Miss Duchess 351 Pld  
WCR Sir Dakota Wind 712P  
KC Miss Lois 6455P

	CE	BW	WW	YW	Milk	MCE	MTNL	SC	CWT	REA	Fat	Marb
S	-0.5	2.1	31	47	2	1.3	17	1.2	14	0.37	0.016	-0.05
D	5.0	0.4	19	24	6	3.6	16	0.4	3	0.12	-0.007	0.11

How do you find a purebred female more proven on a high level than this one? Miss Impressed 5145P was the 2007 National Western Grand Champion Charolais Female and her very first calf, TR Ms Kaycee 7787T by Firewater, was selected as the National Grand Champion of the Fort Worth Stock Show in 2009 and Reserve Grand Champion of the 2009 National Western Junior Show. That's two National Championships for this one and she might have more to give in the crossbred business. Five sons by Heat Wave and one heifer by Paddy O'Malley sold to Bonham Show Cattle, OK, from her first ET crop and our customers love this one's embryos. 5145P is so correct and balanced with hard-to-find hair and show ring style in a purebred female that it's no wonder she works with both pure and crossbred sires. Consider both of the options selling here; Firewater semen is getting harder to get – he is the most dominant Charolais bull in the breed today.

### DONORS UNLIMITED GROUP

Mike Mimms 806-364-1331 • Primetime AgriMarketing, Craig Reiter 419-350-9159  
www.donorsunlimited.com



# Fink Beef Genetics embryo package



Full sister of Lot 11 donor dam.



M6 Grid Maker 104 P - Sire of Lot 11.

## 11 Four Frozen Embryos

### Purebred Charolais Embryos

**M6 Grid Maker 104 P**  
M633377

WCR Sir Tradition 066

VCR Miss Mac IV 317

LT Bluegrass 4017

**MF Kisses 9725 BG**  
EF1110782

Swegle Creek Olympia ET

WCR Sir Tradition 4402  
Ideal 809 45 of 25  
WCR Sir FA Mac 2244  
VCR Miss Duchess 113  
LT Assertion 1277  
LT Pearl's Breeze 2236  
LT Wyoming Wind 4020  
Swegle Creek Picabo 801

	CE	BW	WW	YW	Milk	MCE	MTNL	SC	CWT	REA	Fat	Marb
S	6.7	0.5	32	66	14	1.6	30	0.8	23	0.76	-0.032	0.12
D	5.2	-0.7	22	41	-4	5.0	7	0.8	5	0.18	0.018	0.06

The dam of these embryos is a full sister to the Grand and Reserve Grand Champion bulls at the 2010 National Jr. Charolais Show. Another full sister was a winner at the same show. Maternal sisters include Grand Champion Bred and Owned Female, Senior Champion and Reserve Senior champion females in the owned division at the 2009 National Jr. Charolais show as well as Reserve division winner at the 2008 National Jr. Charolais Show. The grandam, Swegle Creek Olympia, was the 2005 National Jr. Charolais Show reserve Grand Champion owned female and was recently named the #5 dam in the breed for show animals for 2010-2011 by the AICA.

### FINK BEEF GENETICS

Galen, Lori & Megan Fink

15523 Tuttle Creek Blvd., Randolph, KS 66554

785-293-5106 • finkbull1@twinvalley.net • www.finkbeefgenetics.com

# Hi View Ranch embryo package



M6 Ms E46's Duke 248 - Full sibling to the Lot 12 embryos.

## 12 Ten Frozen Embryos

### Purebred Charolais Embryos

<b>LHD Cigar E46</b> M434790	LHD Mr Perfect Y416 LHD Ms Classic Bell X613	WCR Sir Perfection 734 LHD Ms Showme Off W159 LHD Mr Bellmark R113 OCR Classic Queen 46N WCR Sir Duke 761 WCR Miss Mac IV 534 M6 Mortgage Maker 590 CR Ms Perfection 4102
<b>M6 MS Duke 009</b> F937344	VCR Sir Duke 914 Moore's Ms Maker 7410	

	CE	BW	WW	YW	Milk	MCE	MTNL	SC	CWT	REA	Fat	Marb
S	-3.2	3.2	31	50	9	6.1	25	0.8	14	0.56	-0.007	-0.37
D	4.7	1.3	39	65	-5	0.8	14	0.7	12	0.00	-0.023	0.10

Selling 10 full sibling embryos to the great M6 Ms E46's Duke 248. She is the dam of two of our breed's highest selling bulls at \$170,000 and \$50,000 – M6 Right Now and M6 Density. This embryo donor is one of the premier donors in the breed and quite an opportunity to purchase full sibs to another of the breeds great donors #248.

### HI VIEW RANCH

Mark & Stephanie Ebeling  
1900 CR 310, Cleburne, TX 76031  
817-645-5505 • 817-313-3368 • markstephanie@yahoo.com

# Hubert Charolais Ranch embryo package



Miss HCR Wind 0013 - Dam of Lot 13.



LT Ledger 0332 - Sire of Lot 13.

## 13 Two Frozen Embryos

### Purebred Charolais Embryos

<b>LT Ledger 0332</b> M791626	LT Bluegrass 4017 LT Brenda 6120	LT Assertion 1277 LT Pearl's Breeze 2236 LT Rio Bravo 3181 LT Brenda's Ease 3055 Schurrtop 5627
<b>Miss HCR Wind 0013</b> F904760	LT Wyoming Wind 4020 Miss HCR Mac 8010	LT Chap's Lady 2170 BBCR Sir Mac 112 Mis HCR Foundation 6132

	CE	BW	WW	YW	Milk	MCE	MTNL	SC	CWT	REA	Fat	Marb
S	8.7	-1.9	31	60	8	3.7	23	1.5	23	0.58	0.036	0.17
D	3.7	0.0	34	53	7	2.2	24	0.9	11	0.06	0.014	-0.01

These two frozen embryos are sired by the \$105,000, 2011 high-selling yearling bull of our breed – LT Ledger 0332 P. Ledger attracted a legion of admirers at the annual Lindskov-Thiel Bull Sale in South Dakota this past April. The same cow family has also produced these high-sellers and trait-leading sires; LT Distance, LT Blue Value, LT Polled Value and LT Easy Blend.

The donor dam of these embryos is a major donor for years in the HCR program. Her last four natural bull calves have an average weaning weight of 707 pounds! Purebred herd sires out of her have sold to Texas, Kentucky, Oklahoma and Kansas. She was also the number one weaning weight heifer in her calf crop with a 705 weight and 122 ratio.

**HUBERT CHAROLAIS RANCH**  
David & Shelby Hubert  
510 Maple Ave, Oakley, KS 67748  
785-672-3528

## King Charolais pick of bred heifers



KM Miss Easy Pro 8063 - 2009 National Western Reserve Grand Female and bred heifer from King Charolais

## 14 Pick of Bred Heifers

This will be a feature lot of this sale. These heifers are A.I. sired by a strong representation of Lindskov-Thiel sires including LT Easy Blend 5125, LT Western Edge 4057, LT Easy Pro 1158 and LT Wind Raven 4325 Pld, a LT Wyoming Wind son and senior herd sire at King Herefords and Charolais. Most are bred A.I. to the calving ease specialist LT Bluegrass 4017. These heifers are quite maternal and are due to calve in January 2012, so Bill would like this selection to be completed by December 1, 2011.

The most well-known female to come out of the King herd is KR Miss Easy Pro 8063, that Cally Thomas from South Dakota showed in 2009 to the Reserve Grand Female spot at the both the National Western Stock Show Junior Show and the R.O.E. open show.

### **KING CHAROLAIS**

Bill King  
Box 5, Stanley, NM 87056  
505-220-9909

# Mid Continent Farms semen package



SCC Time Bandit 290W

## 15a SEMEN SCC Time Bandit 290W

Purebred Charolais Semen      Five Units  
M772482

## 15b SEMEN SCC Time Bandit 290W

Purebred Charolais Semen      Five Units  
M772482

HFCC Pld Evolution 5L  
SVY Freedom Pld 307N  
SVY Purrfect 184L  
VMN Cavalry Pld 803H  
PC Ms Cavalry P310 PldET  
Thomas Ms Bonanza 8673

CE	BW	WW	YW	Milk	MCE	MTNL	SC	CWT	REA	Fat	Marb
2.6	2.1	17	32	3	4.1	12	n/a	n/a	n/a	n/a	n/a

One of the most exciting bull calves to hit the scene in 2010. Time Bandit was the 2010 National Junior Bull Calf Champion in Denver in mid-January and then went to Fort Worth and was the Grand Champion Bull in late January 2010. Many breeders marveled at his awesome thickness, combined with a 82 pound birth weight and then on to a powerful 913 pound adjusted weaning weight.

**MID CONTINENT FARMS**

Gregg Stewart and Family  
Washington, KS



# Thomas Ranch embryo package



Thomas Swissler Sweet 1764 ET - Full sister to the Lot 10 donor dam.



TR Mr Fire Water 5792R - Full sibling to Lot 10 embryos.

## 16 Three Frozen Embryos

### Purebred Charolais Embryos

LT Wyoming Wind 4020 Pld  
**Thomas Oahe Wind 0772ET P**  
 M519111

Thomas Ms Camelot 5646  
 LHD Cigar E46

**TR Ms Cigar 5785R ET**  
 F1024820

Thomas Ms Bonanza 8698

Schurrtop 5627  
 LT Chap's Lady 2170P  
 Mr Camelot Polled  
 Thomas Ms Immortal 7300  
 LHD Mr Perfect Y416  
 LHD Ms Classic Bell X613  
 Schurrtop Bonanza Pld  
 Thomas Ms Immortal 7300

	CE	BW	WW	YW	Milk	MCE	MTNL	SC	CWT	REA	Fat	Marb
S	1.3	2.1	23	43	-6	3.0	6	0.8	10	0.30	0.013	-0.19
D	-1.0	2.0	25	50	9	3.2	22	0.5	16	0.28	-0.012	-0.15

These embryos are full sibs in blood to the National Champion Bull TR Mr Fire Water 5792R! The dam is a full sister to the National Champion Female Thomas Swissler Sweet 1764 ET "ZSA ZSA." She also was the highest selling female in the 2010 Thomas Ranch Mature Cow Herd Dispersal at \$15,500 selling to Greg Slack and Polzin Cattle.

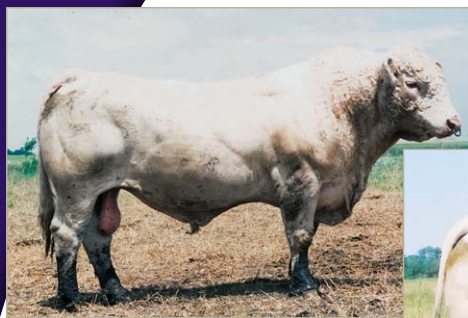
With daughter Cally Thomas at K-State, working on the livestock judging team, the rodeo team and soon to find her way around Aggeville and being friends of Stanley, it was a sure deal that the Thomas family would donate to this great endeavour.

### THOMAS RANCH

Troy & Veal Thomas  
 18439 Capri Place, Harrold, SD 57536  
 605-973-2448 • thomas@venturecomm.net • www.thomasranchcattle.com

# Wienk Charolais embryo package

Select your embryo mating from the following sire and dam choices available - you pick the mating!



WCR Tradition 066

Your choice of two embryos from Tradition 066 one of the breeds top proven carcass sires or sired by KC Design 4246, a young sire with over the top maternal numbers, his Milk EPD is 26 and his Total Maternal EPD is 41, both numbers in the top 1% of the breed.



KC Design 4246 P

## 17 CHOICE Five Frozen Embryos

### Purebred Charolais Embryos

#### SIRE CHOICES

WCR Sir Tradition 4402  
**WCR Sir Tradition 066**  
 M318119  
 Ideal 809 45 of 25

ABC Weinks Tradition  
 WCR Miss Century Mac 126  
 WCR Sir Fab Mac 809  
 Ideal D'Artagan 250F 08

CE	BW	WW	YW	Milk	MCE	MTNL	SC	CWT	REA	Fat	Marb
-1.8	1.7	27	51	2	-2.9	16	0.4	9	0.37	-0.038	0.03

PF EL Duke 9021 P ET  
**KC Design 4246 P**  
 M679384  
 KC Dakota Elim 2046 P

PF Impressed 620 P ET  
 VCR Miss Duchess 351 PLD  
 ASC Eliminator 032  
 KC Miss Dakota Wind 046

CE	BW	WW	YW	Milk	MCE	MTNL	SC	CWT	REA	Fat	Marb
-10.2	1.6	30	48	26	-7.5	41	1.3	7	0.19	-0.013	-0.05

#### DAM CHOICES

WCR Prime Cit 764 Pld  
**WCR Miss Prime Cut 0779**  
 F872002  
 WCR Miss L06 II 5163

JWK Impressive D040 ET  
 WCR Miss Ease 4314  
 WCR Sir L06 299 ET  
 WCR Miss Duke 9947

CE	BW	WW	YW	Milk	MCE	MTNL	SC	CWT	REA	Fat	Marb
5.2	0.6	31	58	6	2.4	21	1.1	21	-0.10	0.023	0.08

Paul 109/9  
**WCR Paulette 8013 ET P**  
 F824444  
 WCR Miss Mac 9516 ET P

Mr S O S  
 Miss Panky Good McKinney  
 WCR Sir Fab Mac 809  
 WCR Miss Duke 8742

CE	BW	WW	YW	Milk	MCE	MTNL	SC	CWT	REA	Fat	Marb
-15.9	4.4	24	37	7	-15.9	19	-0.2	11	-0.02	0.018	-0.15

### WIENK CHAROLAIS

Arnold & Carol Wienk

44210 205th St., Lake Preston, SD 57249

605-860-1111 • acwienk@rapiddatasystems.net • www.wienkcharolais.com

# B&D Herefords embryo package



HH Miss Advance 5053R - Dam of Lot 18a and 18b.



HH Advance 9016W - Sire of Lot 18a.



CL 1 Domino 042X - Sire of Lot 18b.

## 18a CHOICE Two Frozen Embryos

### Purebred Hereford Embryos

HH Advance 5061R  
**HH Advance 9016W**  
 42999303  
 HH Miss Advance 0023K  
 CL 1 Domino 2136M  
 L1 Dominette 93451  
 HH Advance 836H  
 HH Miss Advance 0023K

BW	WW	YW	Milk	M&G	Fat	REA	Marb	BMI	CEZ	BII	CHB
+1.8	+42	+70	+29	+50	+0.023	+0.13	+0.15	+19	+17	+18	+20

## 18b CHOICE Two Frozen Embryos

### Purebred Hereford Embryos

CL 1 Domino 7139T  
**CL 1 Domino 042X**  
 43082236  
 CI 1 Dominette 5142R  
 HH Advance 0024K  
**HH Miss Advance 5053R**  
 42576307  
 L1 Dominette 93451  
 CL 1 Domino 590R  
 CL 1 Dominette 530R  
 CL1 Domino 1172L  
 CL 1 Dominette 810H  
 CL 1 Domino 824H  
 HH Ms Advance 894H  
 L1 Domino  
 L1 Dominette

BW	WW	YW	Milk	M&G	Fat	REA	Marb	BMI	CEZ	BII	CHB
+0.2	+43	+75	+31	+52	+0.054	+0.03	+0.00	+14	+18	+10	+16
+3.9	+50	+88	+31	+56	-0.005	+0.50	-0.03	+18	+12	+17	+23

5053 is a tremendous donor that combines loads of pigment, performance and eye appeal with outstanding EPD's. 5053 is a great uddered, heavy-milking female out of the great 93451 Miles City cow. She has pigment on her teats and has posted average progeny ratios of 106.5 on WW and 107.7 on YW.

### B&D HEREFORDS

Craig & Michelle Beran and Family  
 1350 NE 100 Ave., Clafin, KS 67525  
 620-587-3709 • beranbrothers@hbcomm.net

# C&M Herefords semen package



H5 Solution 064

## 19 SEMEN H5 Solution 064

Purebred Hereford Semen  
43087867

Ten Units and Five Certificates

GH Neon 17N  
Churchill Yankee ET  
Churchill Lady 202  
JA L1 Domino 9213  
H5 Ms 9213 Domet 410  
H5 Ms 767 Advan 298

BW	WW	YW	Milk	M&G	Fat	REA	Marb	BMI	CEZ	BII	CHB
+2.0	+57	+89	+27	+55	+0.011	+0.22	+0.29	+19	+18	+14	+31

The \$21,000 top-selling bull at the 2011 Harrell Hereford Ranch Spring Bull Roundup, Solution offers a straight horned pedigree with the ability to moderate BW while adding muscle, volume and performance. Backed by two great females that are both Dams of Distinction, Solution has the balance, eye appeal and structural correctness to produce high-quality females and herd sire prospects. Dam - WR 106 on 5 calves, Grandam - WR 107 on 6 calves, Maternal Sister - WR 109 on 3 calves. Solution has been selected for the National Young Herd Sire Test program at the Olson Ranch in Nebraska. He is the "right kind" for today's market and for developing the next generation of Hereford cattle. Look for him in Kansas City.

Video can be viewed at [www.CandMHerefords.com](http://www.CandMHerefords.com) or by scanning the QR Code above with your Smartphone.



**C&M HEREFORDS**  
Nara Visa, NM  
CandMHerefords.com  
575-403-7971



**HARRELL HEREFORD RANCH**  
Baker City, OR  
HarrellHerefordRanch.com  
541-403-2210



**S-W HEREFORDS**  
Bennington, OK  
SWHerefords.com  
580-775-8053



## CK Ranch pick of the herd



UPS Domino 3027 -  
CK Ranch herd sire



MCR Harlands  
Domino 978 ET - CK  
Ranch herd sire

## 20 Pick of 2012 Heifer Calves

This will be a feature lot of this sale. The home of UPS Domino 3027! This is an ultra rare opportunity to purchase female genetics from the historic CK Ranch. Traditionally a closed herd, CK Ranch has opened its gates for this offering. 3027, one of the hottest AI sires in the breed is the calving ease cowmaker. His daughters are moderate, big ribbed, easy fleshing with fantastic udders. Another powerful sire in use is the newest addition to their herd sire lineup, MCR Harlands Domino 978 ET. Both 3027 and 978 have each bred over 25 females to calve in 2012, in addition to CK's exceptional lineup of sires in use. Buyer will have his choice of 2012 heifer calves.

### CK RANCH

John Vanier

PO Box 127, Brookville, KS 67425

785-225-6767 • 785-826-0140 Ray Negus, *manager* • [rmnegus@wtciweb.com](mailto:rmnegus@wtciweb.com)



# Colyer Herefords embryo package



C New Era ET - Sire of Lot 21.



Daughter of Lot 21 donor dam.

## 21 Four Frozen Embryos

### Purebred Hereford Embryos

C New Era ET 42992025	UPS TCC Nitro 1ET	GH Neon 17N LCC Two Timin 438 ET C-S Pure Gold 98170 HH Miss Advance 104A King Ten Dr Erica 255 CL 1 Domino 590 C Ms Magnum 92045
C 8403 Ms Achv 96044 19570205	C Notice Me ET Dr Achiever 8403	
	C 590 Ms Dom 94007	

	BW	WW	YW	Milk	M&G	Fat	REA	Marb	BMI	CEZ	BII	CHB
S	+4.9	+56	+88	+21	+49	-0.015	+0.69	-0.02	+16	+12	+13	+26
D	+2.0	+34	+55	+22	+39	+0.068	-0.14	+0.31	+15	+16	+14	+16

This mating combines the power and performance of "New Era" with the maternal strength of the great "Achiever" daughter "6044". "New Era" was Denver Reserve Grand Champion as a March bull calf and was Grand Champion bull at the Nugget National show as a yearling. His first set of calves are exciting and are proving him to be a great breeding bull. The "6044" cow has exceptional milk and udder quality with extra volume and capacity. She has produced over \$100,000 in actual progeny sales. Her most noted sons have served in the Largent herd in Wyoming, Big Gully Farms in Canada, and Whispering Pines Farms in MN. There are currently 6 daughters in production at Colyer Herefords and several more will be added next year.

### COLYER HEREFORDS

Guy, Sherry & Katie Colyer • Kyle, Bobby Jean, Piper & Cruz Colyer • Ray & Bonnie Colyer  
31058 Colyer Road, Bruneau, ID, 83604  
208-845-2313 • www.hereford.com

# Hoffman Ranch embryo package



H Phyllis 6062 ET - Dam of Lot 22.



HH Advance 8050U ET - Sire of Lot 22.

## 22 Three Frozen Embryos

### Purebred Hereford Embryos

L1 Domino 01384  
**HH Advance 8050U ET**  
 42897061

HH Miss Advance 365N  
 RCR 804 Domino 2025  
**H Phyllis 6062 ET**  
 42712969

C Ms Pure Gold 2003

L1 Domino 01284  
 L1 Dominette 00532  
 HH Advance 0024K  
 HH Miss Advance 103L  
 GB L1 Domino 804  
 RCR L1 Dominet 8224  
 C-S Pure Gold 98170  
 C 8403 Ms Activ 96047

	BW	WW	YW	Milk	M&G	Fat	REA	Marb	BMI	CEZ	BII	CHB
S	+0.5	+50	+80	+26	+50	+0.072	+0.21	+0.03	+11	+15	+7	+19
D	+4.2	+47	+83	+28	+52	+0.021	+0.23	+0.29	+18	+14	+16	+26

This is a straight horned mating that I think should be able to do it all! 8050 is a bull we recently bought a semen interest in from Holden Herefords and Deber Herefords. He is a low birth weight bull that has growth, power, and muscle. He is out of the great 365 cow. My favorite sire group this year at Holden's were the 8050 calves. He is exactly what the breed needs! 6062 is a huge bodied, easy fleshing cow with a lot of bone and power. A direct daughter of 2003 that replicates the potency of her famous dam. This mating is one of our most exciting all year!

### HOFFMAN RANCH

Jason, Kaycee & Haxton Hoffman • Dennis & Dixie Hoffman  
 P.O Box 287, 39575 E. Antelope Valley Rd., Thedford, NE 69166  
 530-604-5096 • jason@hoffmanranch.com • www.hoffmanranch.com



KJ 520E Pure Vickie 750P ET - Dam of Lot 23.



KJ HVH 33N Redeem 485T ET - Sire of Lot 23.

## 23 Two Frozen Embryos

### Purebred Hereford Embryos

SHF Radar M326 R125  
**KJ HVN 33N Redeem 485T ET**  
 42834201

HVH Oksana 4L 33N  
 C-S Pure Gold 98170

**KJ 520E Pure Vickie 750P ET**  
 42518728

SPH VCR Miss Vickie 520E

KCF Bennett 3008 M326  
 SHF Positive Miss 73C M15  
 HVH Kremlin 57F 108K  
 HVH Genetic Queen 53H 4L  
 C Gold Rush 1ET  
 C Ms Dom 93218 1ET  
 DL Victor 85X 7A  
 S&S Vickie 498C

	BW	WW	YW	Milk	M&G	Fat	REA	Marb	BMI	CEZ	BII	CHB
S	+3.5	+72	+106	+18	+54	+0.044	+0.76	+0.19	+23	+14	+18	+35
D	+2.8	+42	+61	+27	+48	-0.053	+0.41	-0.25	+14	+16	+13	+16

This mating ties together the best genetics Jensen Bros could offer this event. The sire Redeem is quickly being found as an AI sire for many progressive herds. He ties eye appeal and total performance into a very complete package. The Dam 750P was a Denver Champion as well as her dam 520E. She is also a full sister to KJ 520E Investor 532M who was a three time calf champion himself. 750P has worked really well with a number of herd sires. The future is pointed towards the "Kind" Redeem is producing here's a chance to get in on the ground floor for a very worthy cause.

### JENSEN BROS.

Kevin & Sheila Jensen  
 PO Box 197, Courtland, KS 66939  
 785-243-6397 • jensenks@courtland.net • www.jensenbros.net

# Michigan State University embryo package



MSU Queen 18S - Dam of Lot 24.



CRR About Time 743 - Sire of Lot 24.

## 24 Three Frozen Embryos

### Purebred Hereford Embryos

THM Durango 4037  
**CRR About Time 743**  
 42797564

CRR D03 Cassie 206  
 BR Moler ET  
**MSU Queen 18S**  
 42709404

MSU Miss Keynote 6J

CS Boomer 29F  
 THM 7085 Victra 9036  
 SHF Interstate 20X D03  
 CRR 475E Cassie 838  
 Remitall Online 122L  
 DM L1 Dominette 820  
 Remitall Keynote 20X  
 MSU Optima 33B

	BW	WW	YW	Milk	M&G	Fat	REA	Marb	BMI	CEZ	BII	CHB
S	+2.0	+54	+77	+16	+43	-0.062	+0.58	+0.23	+25	+18	+21	+33
D	+4.8	+55	+93	+11	+39	-0.073	+0.78	-0.09	+19	+16	+15	+29

Selling three grade 1 embryos out of CRR About Time 743, the 2009 National Grand Champion Bull and MSU Queen 18S. MSU Queen 18S was the high selling female in the 2006 Fall Fest Sale and was shown very successfully by Dylan Evans from Kansas. The grand dam of these embryos is MSU Queen 6J; she was Grand Champion female at the 2000 North American International Livestock Show. The great grand dam of these embryos MSU Miss Excel 9D is claimed by many to be one of the best cows every to be raised at MSU. Here is your opportunity to select genetics that have unlimited potential.

### MICHIGAN STATE UNIVERSITY

Cody Sankey, *beef cattle manager*

1290 Anthony Hall, East Lansing, MI 48824

517-355-7452 • sankeyc@msu.edu • www.msupurebred.com



# Lowderman Cattle Co. semen package



H Richochet 0314 ET



LCC Back N Time ET



LCC Wally 948



LCC Chancellor 614 ET

**Two straws offered on each of the following bulls and all semen is located at one location. Please contact LCC for shipping instructions. Shipping will be at the buyer's expense.**

## **LOWDERMAN CATTLE CO.**

Jack and Sherry Lowderman  
Monte, Carrie and Rhett • Brent, Kris, Blake and Morgan • Cody and Abbey  
309-833-5543



## 25 SEMEN H Richochet 0314 ET

Purebred Hereford Semen

Two Units

43111902

BW	WW	YW	Milk	M&G	Fat	REA	Marb	BMI	CEZ	BII	CHB
+2.8	+44	+76	+20	+42	+0.010	+0.26	-0.10	+16	+17	+14	+17

2011 National Western Reserve Champion Polled Bull. This son of TH 75J 243R Bailout 144U ET was first named spring calf champion bull in Denver. He weighed 1,088 and had a WDA of 3.57.

## SEMEN LCC Back N Time ET

Purebred Hereford Semen

Two Units

42909938

BW	WW	YW	Milk	M&G	Fat	REA	Marb	BMI	CEZ	BII	CHB
+5.0	+66	+102	+26	+59	+0.003	+0.47	+0.05	+17	+11	+13	+29

This past American royal champion saw heavy use by his owners and reports on his first calves have been great. Bright future, his sire, was on the top 5 list for progeny registrations in 2009. You can be ahead of the curve by using this young sire as he will be a big part of LCC's future.

## SEMEN LCC Wally 948

Purebred Hereford Semen

Two Units

42999663

BW	WW	YW	Milk	M&G	Fat	REA	Marb	BMI	CEZ	BII	CHB
+3.7	+49	+76	+18	+43	-0.037	+0.44	+0.01	+19	+16	+17	+24

This great young "Wallace" son was the talk of the yards in Denver and semen has been in high demand. This picture perfect bull will see heavy service and this will be your opportunity to join in the long line of progressive breeders that will be utilizing "Slick Willy".

## SEMEN LCC Chancellor 614 ET

Purebred Hereford Semen

Two Units

42687161

BW	WW	YW	Milk	M&G	Fat	REA	Marb	BMI	CEZ	BII	CHB
+2.5	+53	+81	+15	+41	+0.012	+0.56	-0.02	+19	+16	+16	+23

This two time Illinois State Fair Champion is an own son of Channing. This sire can moderate BW while adding REA. His first daughters have topped sales around the country and have the look that they will make great cows. The dam of this bull has 2 calves at 97 BW and 102 WW.

## SEMEN TH 14M 63N Tundra 1S

Purebred Hereford Semen

Two Units

42702789

BW	WW	YW	Milk	M&G	Fat	REA	Marb	BMI	CEZ	BII	CHB
+6.0	+52	+96	+14	+40	+0.013	+0.27	+0.01	+16	+12	+13	+23

This powerful son of tundra was the top selling bull in the 2007 Topp Herefords sale where he was chosen by Ned and Jan Ward. This sire will add growth and REA while maintaining that great look in his progeny. The dam of this bull has had 5 calves reported at birth with a 99% ratio while maintaining a nursing ratio of 105% on 4 calves.



WAGR Driver 706T - Sire of Lot 26.

## 26 Three Frozen Embryos

### Simmental Embryos

**WAGR Driver 706T**  
2411975

3C Melody M668 BZ  
3D

**WR Miss Gracie 315R**  
2332248

WAG Hairietta 9145J CAX

Nichols Legacy G151  
CNS Sheeza Dream K107W  
Hart Subzero G322  
3C Crocus G374 BZ  
Meyer Ranch 734  
135\_  
Who Made Who 411F  
Angus

Gracie is sired by 3D out of the famous Hairietta cow. Gracie is the dam of Time Saver who is a club calf bull that Select Sires is promoting. She is also the dam of Game Plan who is a bull Dax Lautner, Tracy Goretska and Clint Barnes are promoting. This should be an exciting Simmental mating. Sharp Fronted and lots of bone and body.

**BELLAR CATTLE CO.**

Randy & Gina Bellar

908 5th St., Wisner, NE 68791

402-380-3710 • bellarcattleco@cablone.net • www.bellarcattleco.com

# Collins Cattle, Inc. embryo package



Collins Grizz 950 - Lot 27 donor dam cloned from.



Money Honey 4000



Sure-as-Sugar 7080



Kurkova 355N

## 27 Two Frozen Embryos

Without question, Collins Grizz 950 is and has been one of the most productive donors in embryo transfer to Meyer 734 in history. She produced over \$175,000 in Meyer progeny in less than five years. She is the dam of Money Honey, Dolly Python, Sure as Sugar and Kurkova, plus others. These four females commanded close to \$100,000 in original cumulative purchase price. She is consistent, and every female she has produced has been a high seller, or a leading replacement.

Collins Grizz 950 was cloned in 2008 by Dr. Don Coover. There were three resulting clones, with one set of twins, born in 9/2008. The embryos offered will be from the clones of 950. 950 is impeccable in phenotype...she is moderate, thick and great haired. This is a sure fired mating that has valuable and tremendous potential. No mating of Meyer 734 X Angus has ever been more proven or more successful.

### **COLLINS CATTLE, INC.**

C.A. & Judy Collins and Families • Colby & Shellie Collins • Christy Collins

Frederick, OK

580-305-0001 • [www.collins-cattle.com](http://www.collins-cattle.com)

**SEK GENETICS** Dr. Don Coover



SVF Steel Force S701

## 28 SEMEN SVF Steel Force S701

### Simmental Semen

### Ten Units

2340262

Nichols Legacy G151  
**CNS Dream On L186**  
 2144976  
 CNS Sheza Dream K107W  
 PVF-8F Bf26 Black Joker  
**SVF Sheza Beauty L901**  
 2136200  
 SVF Sheza Lady J900

Nichols Blk Destiny D12  
 Nichols Debra D81  
 SRS Franchise F601  
 Nichols Joliette 107W  
 Harts Black Casino B408  
 PVF-BF Mabelle C131  
 Hart Black Oasis F301  
 JBH Sheza Dandy

Steel Force has become one of the more proven and successful sires in the Simmental breed. Bringing a breath of fresh air to mainstream Simmental genetics. His offspring are different. They're classy and carry the style that many thought was lost to the purebred industry. They are the type of cattle that work in real world scenarios for real world cattlemen. Big bodied, and heavy structured, with the mass and power to perform in the purebred and commercial world alike. He is proving his ability to sire cattle that work in the pasture and win in the showing. He swept Louisville clean, Grand and Reserve heifer and Grand Champion bull were all sired by Steel Force. High sellers across the Nation have worn Steel Forces name proudly at the top side of the pedigree chart, demanding as much as six figures

**GRISWOLD CATTLE CO.**

John Griswold

5922 South Brush Creek, Stillwater, OK 74074

405-780-3300 • gccattle@gmail.com • www.gccattle.com

# Black Hereford Ranch semen package



Made Right

## 29 SEMEN Made Right

### Five Units

Made Right may be the most consistent, most productive sire ever in club calf producing history for major champions won in relation to the amount of semen sold. His record would easily top any sire, ever, in history. In addition to the impressive list of major show champions, his record of high selling Hereford steers is also one for the record books, too many to list and reaching in the 100's of thousand in progeny sold. As of June 2009, Made Right semen is only sold twice a year. This is a rare opportunity to purchase this semen outside of Black Hereford Ranch's auctions.

Recent Major Champions Sired by Made Right:

- Champion Hereford Steer- 2011 Ft. Worth Stock Show
- Reserve Champion Hereford Steer- 2011 Ft. Worth Stock Show
- Champion Hereford Steer- 2011 San Antonio Stock Show
- Reserve Champion Hereford Steer- 2011 San Antonio Stock Show
- Champion Polled Hereford Steer- 2010 Ft. Worth Stock Show
- Reserve Champion Polled Hereford Steer- 2010 Ft. Worth Stock Show
- Champion Hereford Steer- 2010 San Antonio Stock Show
- Reserve Champion Hereford Steer- 2011 Sand Hills Stock Show

### BLACK HEREFORD RANCH

Kris, Gay & Phyllis Black

Rt. 1 Box 23, Crawford, OK 73638

580-309-0711 • 580-983-2363 • [www.blackherefordranch.com](http://www.blackherefordranch.com)



# DeRouchey Cattle Co. embryo package



DCC Jewel 230L - Dam of Lot 30.



DCC Jewel 63W - Daughter of Lot 30 donor dam.

## 30 Three Frozen Embryos

### Maine Anjou Embryos

<b>SLC Sooner 101M</b> 331256	DMCC Limited Edition 4F	DMCC Polleroid 29A ET
<b>DCC Jewel 230L</b> 289478	Pannell Miss 015 Nage Top Pick 140J	Dazzlers Fancy Dancer
	Harding's Fancy Gal	Hall's Legacy Plus 738G
		Pannell Miss 582
		Draft Pick
		Nage Alexis 114D
		DMCC Pollstar 36D
		Harding's Duende

230L is one of our leading Maine Anjou Donor Cows. She has raised many powerful herd sires and outstanding females for DeRouchey Cattle Company and Bushy Park Farms. 230 L was included in our Maine Anjou Cows sold to Bushy Park, and in 2009 we had the opportunity to reacquire her. She is one of the great breeding females of the Maine breed.

*Some of her progeny includes:*

DCC Artic Ice, sired by Madrid	\$ 7,500
DCC Way Cool, sired by Ali	\$11,000
BPF Crown Jewel, sired by Premium Blend	\$17,500 <i>top selling bull in 2010 Bushy Park Sale</i>
Two Heat Wave steers	\$10,000
Smokin' Joe female	\$ 6,800

Last year in Bushy Park Farm's fall 2010 female sale a full sib to these embryos sold for \$48,000. 230L has been the dam of additional bulls and heifers that have sold in the \$5,000 - \$25,000 range. Invest with Confidence!

### DEROUCHEY CATTLE COMPANY

Fred & Joan DeRouchey  
1001 Hurst Ave, Mitchell, SD 57301  
derouchey@mitchelltelecom.net

# Donors Unlimited embryo package



Heat Wave x 7063



Heat Wave x 7063



Heat Wave x 7063



## 31a Three Frozen Embryos by Heat Wave

## 31b Three Frozen Embryos by Heat Wave

## 31c Three Frozen Embryos by Smilin' Bob

A proven leader in the Donors Unlimited lineup – and industry wide - 7063 leads the way in terms of bankable consistency and profit for breeders from coast to coast. We're proud to call her ours and she continues to amaze us with her ability to produce upper-level success with each calf crop. If you haven't experienced her power, here is a great chance to see what so many breeders are talking about.

What makes her truly great?

- Ky Stierwalt, OK, showed a powerful son to the 2009 National Western Stock Show Market Steer Grand Championship. Produced from a flush sale to the Blackburn family, NM, in our second sale
- Kirbe Schnoor, CA, showed the Reserve Grand Champion Prospect Steer of the 2007 National Western Stock Show. Produced from embryo sales to Nowatzke Cattle, IN
- "Denver Heat" – A \$15,000 AI prospect owned by Granny Creek Farm, OH, and HK Cattle, TX. Produced from an embryo sale
- The 2008 Mimms Club Calf Auction featured 13 calves by Heat Wave that sold for a \$6,701 average. Another 100% crop of sale qualifiers
- The 2009 Mimms Club Calf Auction featured a \$10,000 son – the only one in the crop
- The 2010 Mimms Club Calf Auction top-seller at \$15,000 plus another steer at \$5,400
- The 2011 Mimms Club Calf Auction included one son by Heat Wave – he sold for \$5,800
- 7063 puts the "Power" in "Power Cow" and continues to create success, enjoyment, and profit for everyone that touches her. Dig in on a large and valuable offering from one of the best in the business!

### DONORS UNLIMITED GROUP

Mike Mimms 806-364-1331 • Primetime AgriMarketing, Craig Reiter 419-350-9159  
[www.donorsunlimited.com](http://www.donorsunlimited.com)

## Green Valley Cattle semen package



Polled Purebred Maine-Anjou (Deceased). One of the best bulls ever produced by Green Valley Cattle. Sired by The Man and out of the great Jazzmyn cow. A legitimate calving ease sire he is widely respected as one of the top female sires in the breed. Always a contender for the Show Sire Of The Year he has consistently sired champions and top sellers at Green Valley Cattle and Hartman Cattle Company.

GVC Statesman 4R ET

### 32 SEMEN GVC Statesman 4R ET

Maine Anjou Semen  
351746

Twenty Units

#### GREEN VALLEY CATTLE

Dennis Garwood Family  
46974 866 Road, Atkinson, NE 68713

402-925-2970 • [greenvallycattle@hughes.net](mailto:greenvallycattle@hughes.net) • [www.greenvallycattle.com](http://www.greenvallycattle.com)

## Ard Ridge Genetics semen package



Entourage is a lower percentage Chiangus bull that we found a few years back and had to add to our program. We saw great success with his first calf crop as his calves were selling for top dollar and winning shows. Unfortunately we lost him at a young age as semen sales were increasing and calf demand was on fire. His most recent champions have been at Louisville, Kansas Beef Expo, Wyoming State Fair, and the list continues. Recent semen sales have been valued at \$100 per straw. There are only 100 units left and this may be the last 10 we let go!!! DIG IN.

BLFM Entourage

### 33 SEMEN BLFM Entourage

Chiangus Semen  
317883

Ten Units

#### ARD RIDGE GENETICS

Neal & Rebekah Branscum and Family  
814 Ard Ridge Road, Nancy, KY 42544  
606-872-5395 • [www.artridge.com](http://www.artridge.com)

## Horsley Brothers embryo package

Three time National Champion ChiAngus Bull Show Sire of the Year in three consecutive years. His progeny have won numerous championships throughout the country. Quality runs deep through Eagle Scout's pedigree as his sire was also a champion. Few producers would question that Eagle Scout is likely the most well rounded bull in the Chianina breed. Show winning phenotype with breed leading performance is why he is a breed legend. Bulls like Eagle Scout come along very rarely.



Eagle Scout 2CA

### 34 SEMEN Eagle Scout 2CA

**Chiangus Semen**  
**246389**

**Five Units**

#### **HORSLEY BROTHERS**

Bob, Jim & Chad Horsley  
27804 Saxon Road, Glava, IL 61434  
309-883-1223 • [horsleybrother@hotmail.com](mailto:horsleybrother@hotmail.com) • [www.horsleybrothers.com](http://www.horsleybrothers.com)

## Talmo Ranch embryo package

TR Trail Blazer PCA is making a fast track to the top with just a handful of calves hitting the ground in Fall of 2009. He is on his way to making a big impact on the Chiangus breed.

TR Trail Blazer PCA was named show sire of the year in 2010. He sires cattle with performance and style. TR Trail Blazer has something to offer in any operation whether its breeding stock or club calves



TR Trail Blazer 2CA

### 35 SEMEN TR Trailblazer 2CA

**Chiangus Semen**  
**331294**

**Ten Units**

#### **TALMO RANCH**

Wayne & Jim Miller  
PO Box 68, Talmo, GA 30575  
706-693-4133 • [info@talmoranch.com](mailto:info@talmoranch.com) • [www.talmoranch.com](http://www.talmoranch.com)

## The Stock Exchange advertising package

# THE STOCK EXCHANGE

## 36 Advertising Package

The Stock Exchange is offering two junior pages ads with ring service in any upcoming publication.

### THE STOCK EXCHANGE

Doug Paul  
Oklahoma City, OK  
405-820-3982



# EXCLUSIVE *genetics*

to benefit the Stanley E. Stout  
Livestock Marketing Center  
at Kansas State University

Thank you to all who have assisted with and donated to this sale to make this vision a reality.



## Sale Notes

