



THE WINNERS' CIRCLE

at Green Oak Farms

Friday, December 31 – 1 pm EST
At Green Oak Farms near New Paris, Ohio
Located along I-70 just east of the Indiana line



***Selling 50 Bred and Open Females
in a New Year's Celebration
of Winning Stock!***

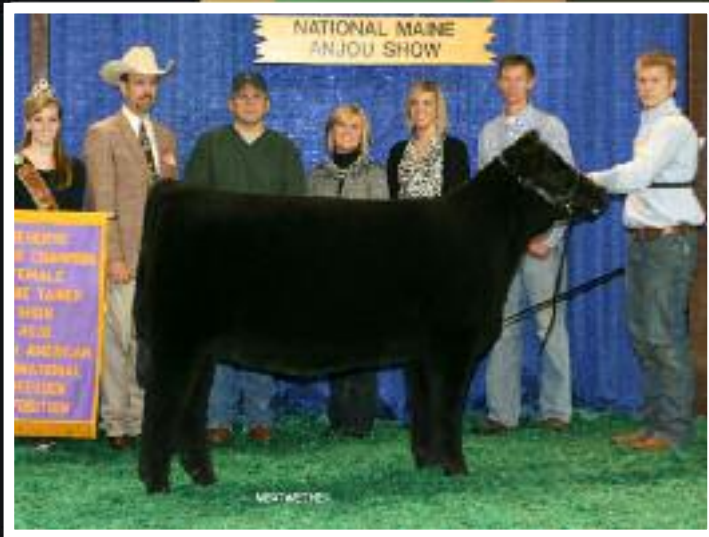
Get To The Winners' Circle

With Champions Fed the RITE Way!



SHOW·RITE®
Show Feeds... Done Rite!

Crystalux®



It's In the Bag!

www.showrite.com
www.hubbardfeeds.com

To locate a Hubbard Feeds/ShowRite feed dealer
or ask about our EASY MONEY tag reimbursement
program for 4-H or FFA Chapters,
call Rita at 1-800-837-8222.



THE WINNERS' CIRCLE

Friday, December 31 – 1 pm EST
At Green Oak Farms near New Paris, Ohio
Located along I-70 just east of the Indiana line
Selling Bred and Open Females and Winning Genetics!

Driving Directions:

From Dayton, OH take I-70 West to Exit 10 (the last exit in Ohio).
Take 127 North to US 40 West. Follow 40 West to Orangeburg Road.
Watch for signs along US 40 and I-70!

From Richmond, IN take the US 40 Exit (the last exit in Indiana). Follow
40 East to Orangeburg Road and watch for signs along US 40 & I-70!

Physical Address: 5495 Orangeburg Road – New Paris, Ohio 45347

**Plan to Join Us Early for a Great Lunch
and then Stay After the Sale for
a Special New Year's Eve Celebration
in Our Heated Sale Facility!**



Gale Long, Owner
5945 Orangeburg Rd.
New Paris, OH 45347

HALDERMAN SHOW CATTLE

Alan & Thelma Halderman
New Paris, Ohio
937/533-0489 or 937/437-0564
Andy Armstrong, 937/533-0771
www.haldermanshowcattle.com

Sale Headquarters & Area Lodging:

Sale Headquarters: Holiday Inn, Richmond, Indiana
.....765/966-7511
Hampton Inn, Richmond, Indiana765/939-9500
Lees Inn, Richmond, Indiana.....765/966-6559
Richmond, Indiana is 15 minutes west of Green Oak Farms.

Goettemoeller SHOW CATTLE

Brian, Dru, & Spencer Goettemoeller
Winchester, Indiana
937/459-0209
765/584-7219

HUNT FARMS

New Madison, Ohio
Tom, Deanna, & Megan Hunt
937/459-3050 or 937/533-0155

Pre-Sale Inspection of the Offering:

The sale cattle are available anytime at their respective farms – all
close to New Paris, Ohio – and will be in place at the sale site after
Monday, December 27. Stop by anytime!

***We Look Forward to Hosting You In the Newly-Renovated
and Heated Green Oak Marketing Center!***



THE WINNERS' CIRCLE

Friday, December 31 – 1 pm EST
At Green Oak Farms near New Paris, Ohio
Located along I-70 just east of the Indiana line
Selling Bred and Open Females and Winning Genetics!

Auction Staff:

Sale Manager

Craig M. Reiter & Associates
P.O. Box 85
Elmore, Ohio 43416
419/862-0117 — office phone
419/350-9159 — sale days
www.primetimeagrimarketing.com
primetime@primetimeagrimarketing.com



Auctioneer Ron Kreis, 740/683-3235
Marketing Agent Jered Shipman, 806/983-7226
Ringman Dale Vonderhaar
PrimeTIME, Inc. Greg Meyer, 513/256-8575
PrimeTIME, Inc. B.J. Eick, 330/234-7425
PrimeTIME, Inc. John Meents, 419/306-7480
PrimeTIME, Inc. Mark Murphy, 937/459-2530
PrimeTIME, Inc. Chad Day, 260/388-2876
American Chi. Assoc., Stan Comer 816/431-2808

Acknowledgments:

Sale Site Coordinator: Jason Manning
Photos: Josiah Pirogowicz

Sale Office Phone:
419.350.9159

Absentee Bidding:

For interested buyers unable to attend we invite you to inspect the offering prior to the auction and then use our free buying service. Please contact any of the owners or auction staff as far ahead of the auction as possible to learn more about the offering and to arrange for this service. We will bid in your absence and arrange to have your purchases delivered to you. Live phone bidding is available but not guaranteed.

Important Sale Information:

Terms: Terms of sale are cash or good check made payable immediately after the sale and before any cattle are loaded. Invoiced (absentee) accounts are payable in full within 10 days of the sale or are subject to a 2% finance charge on the tenth day. A fee of \$50 will be assessed to all returned checks. **Liability:** All animals and merchandise will be at the buyer's risk as soon as bid off but will be cared for by the seller(s) for a reasonable amount of time during and immediately following the sale. Neither the owners, auctioneers, sale manager or other affiliated personnel may be held responsible for any accidents that may occur. PrimeTIME AgriMarketing NETWORK, Inc. acts only as an agent between buyer and seller and may not be held responsible for any livestock or merchandise. It is to be clearly understood that PrimeTIME AgriMarketing NETWORK, Inc. and its representatives act only as a medium between buyer and seller, and may not be held liable, financially or otherwise, for any failure on the part of the same to fulfill any obligations set forth in this sale or for the truth of any warranties expressed or implied. Neither does PrimeTIME AgriMarketing NETWORK, Inc. assume any financial obligations to collect or enforce the collection of monies between buyer and seller. This catalog has been prepared by the sale manager from information provided by the seller(s) and is assumed accurate as presented to us. However, PrimeTIME AgriMarketing NETWORK, Inc. will in no way guarantee age, pedigree, or reproductive status of the animals selling. All exceptions taken and adjustments made are between buyer and seller. **Breeding Information:** Please see the footnotes regarding breeding information for each lot. All bred females will be examined for pregnancy by a qualified DVM prior to the sale and any changes to their breeding status will be made available sale day. Conception dates listed in this booklet are based on the results of said pregnancy examination and/or known breeding dates, and are intended as estimates of calving date only. **Health:** All animals will be accompanied by a health paper valid for interstate shipment. Buyers should make themselves aware of their respective state's health requirements prior to the sale. **Insurance:** Livestock insurance will be available at the clerk's desk through Great American Insurance. **Announcements:** Any announcements made from the sale block by the owners, auctioneer, or sale manager take precedence over any printed materials. **Sale Booklet Prepared by:** Craig M. Reiter, Sale Manager.

It's Your Turn to Win!

1

HXC Aristocrat 931P 1CA

Chiangus Female 304441

Calved: March 26, 2004

SAF 598 BANDO 5175

SAV 5175 BANDO 1024

CHAMPION HILL SLEEPY MISS

EAGLE SCOUT 2CA

HXC ARISTOCRAT 313J CAX

HXC MS ARISTOCRAT 313F CAX

Sells open with a November heifer by FBF Spook

Selling one-half interest with no possession

One of the newest donors in the Green Oak lineup, this proven cow is Chiangus gold! She is the dam of Abby Collins' 2010 NAILE Grand Champion Junior Chiangus Heifer and one of the most talked about females of the show, LSB Raven Rebel 311W. Furthermore, she is a descendant of one of the truly elite Chiangus families in the breed; the same line that produced Cardinal Cattle's 2010 ACA National Champion Chiangus Heifer and the well-known HXC Aristocrat 313N that has been a Frozen Gold favorite and a longtime top-performer. The opportunity to purchase half interest in one of the breed's best and hottest females has got to rank highly on anyone's list of New Year's Resolutions. There is much to be accomplished with this one!

GREEN OAK FARMS



Meriwether

LSB Raven Rebel 311W

THMT Hot Sauce...Still the One!

2

Pregnancy of THMT Hot Sauce

DONOR PEDIGREE:

PISTOL PETE

FGJ HABANERO

JDA MS POWER PLANT 19A

BAD MEDICINE TER 2Y

CAMPBELLCO GOOSE 512D

CAMPBELLCO DENMAR 051Z

Lot 2 – Confirmed, Unsexed Pregnancy of THMT Hot Sauce

Service Sire: Monopoly

Due to calve approximately February 14, 2011

A fantastic confirmed pregnancy from the backbone of the Hunt Farms success, Hot Sauce! Now with 19 progeny listed in the ACA herd book and many more that have been crossbred specials, THMT Hot Sauce continues to prove herself with each calf crop. She was a dominant champion for Megan Hunt during her stretch run of 18 championships including a victory at the National Junior Heifer Show and the NAILE Junior Show; and Megan's 2010 show string featured a multiple-winning daughter by Who Made Who. Hot Sauce has worked well with numerous sires and her list of top calves includes a daughter, THMT Reddy, that sold for \$12,500 in the 2004 Winner's Circle Sale to Jeff Hicks, TX, and two sons that dominated the Ohio steer show scene in 2004-05 for Nick Pontius, OH, and Terry Oakes, OH. Nick and Terry's steers combined to win more than 20 shows including the Ohio, Michigan, and Oklahoma Beef Expos. Trends come and go but Hot Sauce has remained a steady source of extreme quality and profit for several years. Monopoly might make the best Hot Sauce yet!

HUNT FARMS



THMT Hot Sauce



Proven Winners from The Winners' Circle!



2008 Ohio Expo Supreme Champion Heifer

3 GOET 47

Female Calved: 2004

SIRE: HEAT SEEKER

DAM: BONNELL COW (BFSC MEYER 734 X OCC BLACK LADY 778D)

THF/PHAF

Bred to calve 2/21 to Highliner – No exposure

A sale feature that is certain to please even the pickiest of customers, here is a well-proven Goettemoeller donor that will deliver success of the highest level. The dam of Megan Hunt's "Diddy" heifer that was a dominant winner in 2008 when she was selected, among other titles, as the Supreme Champion Female of the Ohio Beef Expo, this ultra-complete female covers all the bases from fertility, to profit, to good looks and proven blood. She was bred in the well-respected herd at Bonnell Farms, IN, from a deep maternal pedigree and two generations of donors before her. Aside from Megan's winning heifer, this cow also produced the Filges family's multiple-champion steer plus she averaged 8 embryos from two lifetime flushes.

GOETTEMOELLER SHOW CATTLE

4 GOET 319

Female Calved: 2003

SIRE: HEAT SEEKER

DAM: MAINE ANJOU X ANGUS

AI 5/13 to Smilin' Bob – Exposed to Handy – Safe-in-Calf

"Wow Power" from the Goettemoeller donor lineup, this gorgeous creature is proven machinery ready to work for you! She is the dam of Samantha Brooke's many-time champion Pale Face daughter, another daughter by Dr. Who that sold for \$12,500, and an impressive selection of daughters that remain to replace her. She has been flushed one time when she produced 18 valuable embryos and she is ready to deliver again either with Smilin' Bob or Handy, the Ali son of the Chamberlin family's great All About Who daughter. This horse-necked, big-ended beauty has a great attitude and a habit for fast success!

GOETTEMOELLER SHOW CATTLE

5 JBSF Miss Macho 211U

Simmental Female 2480435

Calved: April 17, 2008

MEYER RANCH 734

3C MACHO M450 BZ

3C CROCUS H112 B

211 (AN X CS)

Bred to calve 1/29 to Maximus – No exposure

A special selection from the young cows at Green Oak Farms, this Macho daughter is very correct and feminine with great hair. Safe to Maximus for a sure bet!

GREEN OAK FARMS

6a GOET 71

Female Calved: 2007

SIRE: FOREPLAY

DAM: GG (HEAT WAVE X TRELANE DONOR)

Bred to calve 3/13 to Boardwalk – No exposure

One of two impressive daughters of the "GG" donor at Goettemoeller's, this young Foreplay daughter is impressive in many ways. Like you might expect, she offers plenty of smooth power on a well-balanced build and she is an excellent mother. This should be a great mating with the best Monopoly son from 2009, Boardwalk.

GOETTEMOELLER SHOW CATTLE

6b GOET 952

Female Calved: April 2009

SIRE: DR WHO

DAM: GG (HEAT WAVE X TRELANE DONOR)

AI 5/23 to Jakes Proud Jazz – Exposed to Handy – Safe-in-Calf

Another striking daughter of the well-proven GG, this bred heifer by Dr. Who is going to be an excellent replacement selection. She is built right on a smaller frame with a shaggy, cocky look and great length and balance. This mating to Proud Jazz should make for colorful, quick success!

GOETTEMOELLER SHOW CATTLE

Two Daughters of GSC Mandy!

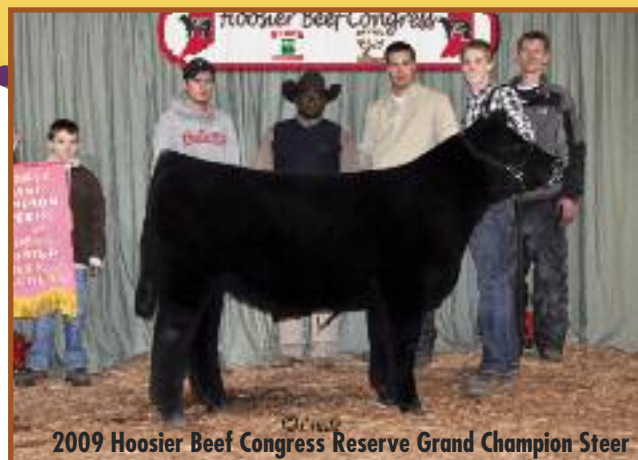
7a GOET 944

Female Calved: April 2009
 SIRE: **HEAT WAVE**
 DAM: **MANDY** (DOUBLE VISION X DOUBLE STUFF)

AI 5/19 to Mercedes Benz – Exposed to Handy – Safe-in-Calf

A high-potential red and white paint from the great Mandy donor, here is another feature that we never intended to sell. A full sister to the 2009 Hoosier Beef Congress Reserve Grand Champion Steer and two heifer calves that averaged \$37,000 in the 2009 Wade Rodgers Sale, this heifer is as cool as they come with big hair, a hip to match, and the right design to work well. A stout maternal sister sells here as well!

GOETTEMOELLER SHOW CATTLE



2009 Hoosier Beef Congress Reserve Grand Champion Steer

7b GOET 838

Female Calved: 2008
 SIRE: **TYCOON**
 DAM: **MANDY** (DOUBLE VISION X DOUBLE STUFF)

THF/PHAF
Bred to calve 2/04 to I-80 – No exposure

From the embryo program, here is another valuable daughter of the mega-producing Mandy donor that is surely a one-of-a-kind in the industry. Seven maternal siblings to this heifer sold for a staggering average of \$23,000 in 2009 and a three-quarter sister is the Chamberlin family's great "Tippy" heifer that claimed a slew of titles in 2008-2009. This heifer is a high-potential breeding piece with great parts like a goose neck, incredible hair, and a great show ring look. This mating should be just right to the high-seller of our 2009 sale, I-80!

GOETTEMOELLER SHOW CATTLE



A maternal sister to Lot 7B

Two Daughters of GSC Sassy!

8a GOET 900

Female Calved: March 2009
 SIRE: **HEAT WAVE**
 DAM: **SASSY** (COOKIE MONSTER X POLLED PREMIER)

AI 5/22 to I-80 – Exposed to Handy – Safe-in-Calf

One of two very valuable daughters of the great "Sassy" donor at Goettemoeller Show Cattle that was selected as the Grand Champion MaineTainer Female of the 2005 North American International, this wide and soft Heat Wave daughter will make a high-potential breeding piece. She offers more extension and femininity than a typical Heat Wave. And her sisters – like the cool blue one we sold to Tooms Show Cattle, OH, a year ago – have proven themselves to be strong performers. You won't go wrong here!

GOETTEMOELLER SHOW CATTLE



"Sassy"

8b GOET 930

Female Calved: March 2009
 SIRE: **SUN SEEKER**
 DAM: **SASSY** (COOKIE MONSTER X POLLED PREMIER)

Bred to calve 1/30 to I-80 – No exposure

Sassy daughters make great cows, like the maternal sister to this pair of heifers that was selected as the Grand Champion Chianina Female of the 2007 Tennessee Agribition and is now a key performer at RJ Keene Ranch, FL. This rare Sun Seeker is very correct and powerfully built with tremendous muscle and balance. A maternal brother by Hannibal was the Champion Chi Steer of the 2008 OCA BEST for the Clark family, OH.

GOETTEMOELLER SHOW CATTLE



A maternal sister to Lots 8A & 8B

Our Best Bred Heifers!



9 THMT 5W

Elig. Chi Female Calved: 2009

SIRE: **ALI**
DAM: **MRH SCHWARZIE 175T (PADDY O'MALLEY)**

Bred to calve 2/19 to WAGR Dream Catcher (sexed heifer semen)

Extreme shape and club calf appeal from MRH Schwarzie, a winning show heifer and a top-selling favorite from our 2009 sale that is now owned by David Schneider, IN. This massive heifer offers leading muscle shape and a ripped front end with an exciting heifer calf on the way!

HUNT FARMS



10 THMT 9411

Elig. Chi Female Calved: 2009

SIRE: **HB SOMETHING DIFFERENT**
DAM: **EAGLE SCOUT X AN**

Bred to calve 2/19 to Smart Choice

The gorgeous first calf from the top-selling bred heifer in the 2008 HB Eastern Xposure Sale, this heifer by the National Champion, HB Something Different, is some of his finest work. She has all of the look you'll ever need plus more shape and power than nearly any you'll find that are still this feminine and correct. Happy New Year!

GREEN OAK FARMS



HB Something Different



11 THMT 928

Elig. Chi Female Calved: 2009

SIRE: **DOCTOR WHO**
DAM: **FRICTION X SIM**

Bred to calve 3/10 to Smart Choice

Explosive power and eye appeal! This baldie is an easy favorite in this group due to her extra size, shape, and pizzazz. Project her to maturity and you'll see a beautiful, top-producing female just like her dam that is a leader at Green Oak.

GREEN OAK FARMS

12

HF Foxy 7W

50% Simmental Female Calved: January 3, 2009 Black/Polled

SIRE: DJ SALUTION (R&R WAREHOUSE K609 X MEYER 734 X BLACK MAX)

DAM: HF PAULA (HABANERO X WF MISS FOXY LADY)

AI 4/24 to Suh – PE to HF Juneau 7/04-8/20 – Safe-in-calf

Produced from a very productive full sister to HF Hot Diva – the winning donor that produced HF Get It Done – this is a special selection from the top of the Halderman replacements. Plenty of proven cow power sells with this smooth, feminine, and complete bred heifer that is carrying the service of the syndicated Maine-Anjou sire, GVC Suh. What a cow this one will be, and she'll get you started with a valuable MaineTainer by one of the best in the business!

HALDERMAN FARMS



Lot 12



GVC Suh

14

HF Barbie 136W

Female Calved: March 10, 2009 Black/Polled

SIRE: HF GET IT DONE (DOCTOR WHO X HF HOT DIVA)

DAM: ROWE MS BARBIE 84KGL (KGST FEAR THIS X ROWE MS BARBIE 84KG)

AI 4/28 to Breathe Easy – PE to HF Juneau 5/25-7/04 – Safe-in-calf

We have had outstanding success with our Barbie calves in sales and in the show ring and this one will help the average. She is huge boned and rocket necked with great hair – like everything we've gotten from her now-deceased donor dam that was a top-seller and winner during her show career.

HALDERMAN FARMS



Lot 14



Rowe Ms Barbie 84KGL

15

HF Silver Queen 80W

Female Calved: March 10, 2009 Smoke/Polled

SIRE: HOO TOO (HOO DOO CROOK X MCF 2556 (CUB X 116 CUNIA))

DAM: WESTWARD DIVA 314W (GAR GRID MAKER X KM BARB 93)

AI 4/28 to Breathe Easy – PE to HF Juneau 5/25-7/04 – Safe-in-calf

A smoky wide-body from the great Westward Diva 314W! This powerful female will have no problem catching your eye sale day, and she is a safe bet for stout production. Her high-maternal pedigree is built around the proven strength of her donor Angus dam, and a full sister was one of our top-sellers a few years ago to Scott and Barb Stockslager, OH. This Hoo Too daughter is big bellied and very feminine and correct with a Breathe Easy on the way!

HALDERMAN FARMS



Lot 15



Westward Diva 314W



Lot 16



THMT Hot Sauce

16

MRH Susie 52W/8851

Chimaine Female 343035 Calved: March 23, 2009 Black/Polled

ALL ABOUT YOU

BCSN ABOUT TIME

BCSN CHEYANNE 49
FGJ HABANERO 1CM

THMT HOT SAUCE

CAMPBELLCO GOOSE 512D

Bred to calve 2/19 to WAGR Dream Catcher (sexed heifer semen)

From the Hunt Farms embryo program and the great Hot Sauce whose progeny continue to win on a high level, this heifer is a predictably impressive replacement. Like her pedigree tells us, she is crazy hairy and thick with a super-clean front end. Her sisters have been favorite property for many, and this one will start off right with a heifer calf by Dream Catcher!

HUNT FARMS



Lot 17

17

YR Miranda 216W

Chiangus Female 342715 Calved: May 2, 2009 Black/Polled

OCC ANCHOR 771A

OCC LINEBACKER 870L

OCC DIXIE ERICA 786F
CJB FLASH

PCC MISS MIRANDA

MGM MS TOTBACK 642F

Bred to calve 3/20 to Sandman

A gorgeous, high-maternal Chiangus package from the top of the Yellow Rose program, this show heifer is going to be quite a cow. She is extra wide and deep with a smooth, maternal look; and she is due to the new Green Oak herd sire, Sandman!

HUNT FARMS



Lot 18

18

GOFG Miss Grizz 77

Chiangus Female 341385 Calved: January 25, 2009 Black/Polled

GOLDSPUR EIGHT MILLION

GCC GRIZZ 0065

GCC MS IMPRINTESSA 6065
EAGLE SCOUT

THMT SHEDAISY

FBF DAISY 21K

Bred to calve 2/19 to Smart Choice

From the winning show heifer THMT Shedaisy, this high-maternal Chiangus heifer has plenty to offer and was selected as a Division Champion of the 2009 AJCA Junior National Heifer Show. She is good from all angles with wonderful depth, movement, and surprising muscle shape from a first-calf dam. She is one of our best and we know you'll succeed with this one. Her dam is from our embryo program and her pedigree combines two Chiangus legends.

GREEN OAK FARMS

19**THMT Sheila 551W**

Chimaine Female 343019 Calved: April 6, 2009 Black/Polled
 PISTOL PETE
FGJ HABANERO
 JDA MS PWR PLANT 19A
 OVERHEATER
THMT SHEQUEILA
 CAMPBELLCO GOOSE 512D

Bred to calve 3/10 to Who Made Who

Here is a certain club calf donor on the come from the world's only maternal sister to THMT Hot Sauce – the Lots 2 and 16 donor in this sale - by Overheater! This one has the shag with the choke of the neck to match and a wonderfully correct and powerful structure. Bred to Who Made Who for her own version of the success that her sister had a year ago.

HUNT FARMS



Lot 19

20**THMT Sara**

Elig. Chi Female Calved: 2009
 SIRE: **GET IT DONE**
 DAM: **GRIZZ**

Bred to calve 3/15 to Sandman

All the hair and style you'd expect from this low birth weight, high-class heifer and she is due to the new Green Oak herd sire, Sandman!

HUNT FARMS



Lot 20

21**MRH Sadie 550W**

Chimaine Female 343020 Calved: February 2, 2009 Black/Polled
 NBH POLLED ENERGIZER 688
COWANS ALI 4M
 FJH COUNTESS 115H
 THMT E-MAIL 375K
THMT BLUEBIRD 50M
 ANGUS 032B

Bred to calve 1/29 to Smart Choice

A full sister to DeRouchey Cattle Company's leading 550L donor, look at the top and front end on this outstanding Ali daughter! She'll make a gorgeous cow and she is due early to Smart Choice, a customer favorite!

HUNT FARMS

22**GOET 99**

Female Calved: March 2009
 SIRE: **DIRTY HARRY**
 DAM: **GOET 79** (COOKIE MONSTER X 319)

AI 5/14 to I-80 – Exposed to Handy – Safe-in-Calf

A chisel-necked, cool-made heifer with great hair, this should be just the ticket with Goettemoeller's \$53,000 I-80!

GOETTEMOELLER SHOW CATTLE

23**GOET 91**

Female Calved: May 2009
 SIRE: **DIRTY HARRY**
 DAM: **GOET 1** (CONTAGIOUS)

AI 5/24 to Wisdom – Exposed to Handy – Safe-in-Calf

This exciting replacement has the big hair and the choke of the neck that Brian Goettemoeller knows so well and has proven to work time and again. Project her to maturity; she'll be worth whatever she brings and more!

GOETTEMOELLER SHOW CATTLE

24**GOET 911**

Female Calved: April 2009
 SIRE: **HEAT WAVE**
 DAM: **THROGMARTIN SALLY** (MEYER 734 X ANGUS)

AI 5/21 to Mercedes Benz – Exposed to Handy – Safe-in-Calf

A very stout Heat Wave daughter with the look of a productive cow, this star-faced heifer is extra big legged and thick with tremendous depth and fleshing ability. Her dam gives her a valuable shot of cow power as well.

GOETTEMOELLER SHOW CATTLE

25**GOET 94**

Female Calved: April 2009
 SIRE: **HARD DRIVE**
 DAM: **GOET 431** (DR WHO X DEBULL)

Bred to calve 2/13 to I-80 – No exposure

From the embryo program and backed by one of the most consistent females in the Goettemoeller program, this 431 daughter makes a great place to start something special. She is sound and versatile with an easy-keeping design and a well-proven lineage.

GOETTEMOELLER SHOW CATTLE

**Sale Time:
1:00 pm EST**



26 HF Miss Magic 17W

Female Calved: March 1, 2009 Black/Polled
 SIRE: **HF MAGIC** (HABANERO X WF MISS FOXY LADY)
 DAM: **MAINE ANJOU CROSS**

AI 5/16 to Dream Catcher (sexed female semen) – PE to HF Juneau 5/25-7/04 – Safe-in-calf
A big-ribbed powerhouse by the proven full brother to HF Hot Diva, this HF Magic daughter has all the tools you need to succeed. She is as wide and deep as anything we can offer plus she blends her maternal power into a smooth, clean front end, and she has a wonderful disposition. She'll turn some heads sale day and is coming with a likely heifer calf by Dream Catcher, one of the hottest sires in the Simmental breed today!
HALDERMAN FARMS



27 HF Wilma 789W

Female Calved: March 1, 2009 Black/Polled
 SIRE: **WHO MADE WHO**
 DAM: **HF 789** (MAJOR LEAGUE X RENO)

AI 5/12 to DJ Salution – PE to HF Juneau 5/25-7/04 – Safe-in-calf
789W is a female that will go on to make some awesome steer prospects. She is extra hairy and big boned, with a huge top and bred to calve easily to Salution. Don't let this super stout Who daughter get away!
HALDERMAN FARMS

28 HF Mary Lou 8W

Female Calved: March 22, 2009 Black/Polled
 SIRE: **HEAT SEEKER**
 DAM: **AHF MARY LOU** (FOREPLAY X PB ANGUS)

AI 5/16 to DJ Salution – PE to HF Juneau 5/25-7/04 – Safe-in-calf
8W is a cocky, choked fronted female mated perfectly for her first calf. Salution should work great here – look at the selection of deep-ribbed daughters in this offering – and this heifer is backed by the reliable style of AHF Mary Lou, our top Foreplay daughter.
HALDERMAN FARMS

29 HF Winnie 43W

Female Calved: April 19, 2009 Polled
 SIRE: **HF NIXON** (EBB STRICTLY BUSINESS X WF MISS FOXY LADY)
 DAM: **TOTALLY TUNED** (DYNAMITE (SIMMENTAL X POWER PLANT) X ANGUS)

PE to HF Juneau 5/25-7/04 – Safe-in-calf
Sired by the Halderman Farms National Champion, HF Nixon, this smooth, complete heifer is one to mark with a star. She is bred to calve easily to HF Juneau whose first calves sell here and have surpassed our expectations for quality each time. You'll get a good one here and she could be the steal of the day!
HALDERMAN FARMS

30 HF Diva 754W

Female Calved: February 7, 2009 Black/Polled
 SIRE: **GRIZZ**
 DAM: **HF HOT DIVA 54T** (NORTHERN IMPROVEMENT X HF HOT DIVA)

AI 6/15 to Dream Catcher (sexed female semen) – PE to HF Juneau 7/04-8/20 – Safe-in-calf
A farm favorite since she was a calf, 754W is the first calf of HF Hot Diva 54T, an own daughter of the multiple-winning show heifer and well-proven donor, HF Hot Diva. This heifer is sound and flawless in her design with excellent length, great hair, and plenty of bone. Her first heifer calf is due in March which is truly something to get excited about!
HALDERMAN FARMS





**It's like having
a partner in the field.**

Farming today is a year-round job that requires precision, good judgment and the latest technology. We know how hard you work to ensure healthy and abundant crops come harvest. That's why Trupointe works hard to make a wide range of quality agronomy solutions available to you. Trupointe is there with trusted products, service and advice — like having a partner in the field.

Trupointe Agronomy | Osgood, OH | 419.582.3502 | 866.528.2667 tf | trupointe.com

Simmental and SimAngus Bred Heifers!



31 FBFS Wanda 210W

PB Simmental Female 2505473 Calved: March 18, 2009
 NICHOLS LEGACY G151
CNS DREAM ON L186
 CNS SHEEZA DREAM K107W
 SVF/NJC MO BETTER M217
FBFS SLACKS BETTER 047S
 CRCC PRIDE LASS 2613M

Bred to calve 2/18 to Grizz – No exposure

A unique and powerful purebred Simmental with exciting versatility, this heifer stacks several breed leaders in her pedigree. She offers ideal movement with large bone, impressive depth, and real muscle. She is uniquely moderate and balanced with a great look for pure or crossbred production.

GREEN OAK FARMS



32 HF Molly 634W

50% Simmental Female Calved: January 11, 2009 Black/Scurred
 SIRE: **DJ SALUTION** (R&R WAREHOUSE K609 X MEYER 734 X BLACK MAX)
 DAM: **HF CURLY** (DOCTOR WHO X HF MOLLY)

AI 5/10 to Northern Improvement – PE to HF Juneau 7/04-8/20 – Safe-in-calf

A sale feature! This star-faced DJ Salution daughter is produced from a full sister in-blood to the proven sire, HF Get It Done, and the same family that produced winners like HF Nixon, HF Magic, and much more. She has certain donor potential with tremendous performance, fleshing ability, and good looks plus one of the most proven pedigrees we can offer. Your sale day investment will look small as this one matures – trust us!

HALDERMAN FARMS

33 PRTY PCC 9103W

50% Simmental Female 2538891 Calved: February 19, 2009
 CNS DREAM ON L186
SVF STAR POWER S802
 SVF SHEZA STAR N902

MOON 790 (COMM. ANGUS)

Bred to calve 3/01 to Kessler's Frontman

This half-blood SimAngus might be the deepest and widest of these bred heifers! She adds valuable hair to her massive, loose build and should work nicely with Frontman, the high-selling and easy-calving son of Connealy Front Page that is featured at ABS Global.

GREEN OAK FARMS

35 PRTY PCC 950W

50% Simmental Female 2538894 Calved: February 26, 2009
 MEYER RANCH 734
3C MACHO M450 BZ
 3C CROCUS H112 B

MOON 78 (COMM. ANGUS)

Bred to calve 2/22 to Kessler's Frontman

GREEN OAK FARMS

34 PRTY PCC 9125W

50% Simmental Female 2538888 Calved: March 3, 2009
 3C MACHO M450 BZ
PARTI BOY 7159T
 PARTISOVER BURGESS 813

MOON 80 (COMM. ANGUS)

Bred to calve 2/22 to Kessler's Frontman

This Macho granddaughter is a leader in terms of length, depth and volume. This kind gets more valuable all the time!

GREEN OAK FARMS

36 PRTY PCC 976W

50% Simmental Female 2538889 Calved: February 20, 2009
 MEYER RANCH 734
3C MACHO M450 BZ
 3C CROCUS H112 B

MOON 165 (COMM. ANGUS)

Bred to calve 2/22 to Kessler's Frontman – Exposed to OCC Magnitude son – Due mid-March

GREEN OAK FARMS

37**PRTY PCC 975W**

50% Simmental Female 2538890

Calved: February 17, 2009

MEYER RANCH 734

3C MACHO M450 BZ

3C CROCUS H112 B

MOON 164 (COMM. ANGUS)*Bred to calve 2/22 to Kessler's Frontman**A favorite from this set of high-maternal half-blood Simmental bred heifers, this Macho daughter is smooth and sweet fronted with excellent hair and ideal belly and bone shape.*

GREEN OAK FARMS

**3C Macho****38****PARTI GIRL 231-926U**

50% Simmental Female 2529098

Calved: October 13, 2008

MEYER RANCH 734

3C MACHO M450 BZ

3C CROCUS H112 B

AAR NEW TREND

PARTISOVER BURGESS 231

PARTISOVER BURGESS 653

*Bred to calve 2/22 to Kessler's Frontman**Smooth, sound, and feminine and safe to Frontman!*

GREEN OAK FARMS

40**PRTY PCC 935W**

50% Simmental Female 2538895

Calved: February 7, 2009

MEYER RANCH 734

3C MACHO M450 BZ

3C CROCUS H112 B

MOON 547 (COMM. ANGUS)*Bred to calve 2/22 to Kessler's Frontman**Extra hair, extra style – this one will really work!*

GREEN OAK FARMS

42**PRTY PCC 953W**

50% Simmental Female 2538893

Calved: February 14, 2009

MEYER RANCH 734

3C MACHO M450 BZ

3C CROCUS H112 B

MOON 118 (COMM. ANGUS)*Bred to calve 2/22 to Kessler's Frontman**These Macho daughters are going to make some really profitable cows. Like her sisters, this half-blood is the proper size with excellent hair and width and she will make a fancy cow.*

GREEN OAK FARMS

39**PRTY PCC 902W**

50% Simmental Female 2538892

Calved: February 12, 2009

MEYER RANCH 734

3C MACHO M450 BZ

3C CROCUS H112 B

MOON 502 (COMM. ANGUS)*Bred to calve 2/22 to Kessler's Frontman*

GREEN OAK FARMS

41**PRTY PCC 9756W**

50% Simmental Female (pending)

Calved: February, 2009

MEYER RANCH 734

3C MACHO M450 BZ

3C CROCUS H112 B

COMM. ANGUS*Bred to calve 2/22 to Kessler's Frontman**You'll love the length, capacity, performance and lasting maternal value of these registered Simmental half-bloods as you get them into production.*

GREEN OAK FARMS

43**PRTY PCC 902W**

50% Simmental Female 2538892

Calved: February 12, 2009

MEYER RANCH 734

3C MACHO M450 BZ

3C CROCUS H112 B

MOON 502 (COMM. ANGUS)*Bred to calve 2/22 to Kessler's Frontman*

GREEN OAK FARMS



Kessler's Frontman
ANGUS BULL 15180461
 SIRED BY CONNEALY FRONT PAGE
 BW EPD -2.3

Open Heifers for The Winners' Circle!



44 HF Molly 834X

Chi/MaineTainer Female Calved: March 1, 2010 Black/Polled

SIRE: **WHO MADE WHO**
DAM: **HF MOLLY U (ALI X HABANERO)**

Sells open – Retaining one flush or at least 8 total embryos

One of the best heifers ever produced in the Halderman program, this powerful and exciting Who Made Who daughter is hard to let go. It takes top females like this one to build for the future, but we also need to share our best so be sure to take advantage of this valuable opportunity. 834X is produced from a tremendous first-calf Ali daughter that goes back to the Foxy Lady foundation. We know she'll be versatile and productive as she matures, but she needs to be shown, as she offers as much feminine power as you'll find. She has looked great since birth, and she just continues to add shape and mass to a very correct, stylish package. Celebrate New Year's Eve by owning one of our very best!

HALDERMAN FARMS



45 RHMC Cocos Puff 677X 1CM

Chimaine Female 350000 Calved: April 3, 2010 Black/Polled

TC STOCKMAN 365
NORTHERN IMPROVEMENT 4480
BLACKCAP OF RR 5367
COWANS ALI

JHD COCO
JHD 5 BY HEAT SEEKER

Sells open

The first calf from the winning dam "Coco", this impressive heifer was selected as the Calf Champion of the 2010 NAILE Junior Chi Show. Her dam was a super show heifer as well with multiple Top 5 placings in the Ohio's BEST Program and a selection as the Calf Champion Female of the 2008 NAILE MaineTainer Show.

HANES FAMILY

JHD Coco



46 AHF DDET 837X

Shorthorn Female Calved: May 16, 2010 Red & White/Scurred

SIRE: **ASSET (SOLUTION X MONA LISA)**
DAM: **DDET 837 (DOUBLE DANDY X DDET 3734)**

Sells open – Retaining one flush or at least 8 total embryos

The latest, and arguably the best, calf from our sensational Shorthorn donor, DDET 837, this uniquely-marked heifer is sure to catch the judge's eye when she enters the show ring. She has a rocket front, a smooth shoulder, excellent depth, and fabulous hair with problem-free movement. When a May calf excels this much, it's hard not to get excited about what the future holds. Like her sisters, this purebred will make great property!

HALDERMAN FARMS

DDET 837



47**HF Mary Lou 853X**

Female Calved: May 1, 2010 Black/Polled
 SIRE: **HF JUNEAU** (JUNEAU X HF HOT DIVA)
 DAM: **HF MARY LOU** (HF NIXON X AHF MARY LOU (FOREPLAY X ANGUS))

Sells open

Be sure to take a good look at this May heifer. This girl's pedigree gives her plenty of maternal ability but her phenotype is all show ring. 853X will go on to be an outstanding club calf momma. Hairy, long, and very correct describe this one best.

HALDERMAN FARMS

**48****HF Baby 3X**

Female Calved: May 3, 2010 Black/Polled
 SIRE: **HF NIXON** (EBB STRICTLY BUSINESS X WF MISS FOXY LADY)
 DAM: **ROWE MS HABANERO TF1HL** (HABANERO)

Sells open

By the Halderman Farms National Champion Bull, HF Nixon, this flashy, big-boned heifer calf is another standout in this impressive set of younger heifers. She has the signature style of her sire and she is backed by an excellent, moderate-framed Habanero daughter that stamps out classy, eye appealing cattle.

HALDERMAN FARMS and 4D FARMS

**49****HF Paris 804X**

Female Calved: May 12, 2010 Black/Polled
 SIRE: **HF JUNEAU** (JUNEAU X HF HOT DIVA)
 DAM: **HF PARIS U** (TOTALLY TUNED X NORTHERN IMPROVEMENT)

Sells open

Extra fancy show power! This leading heifer from the first crop by the very consistent HF Juneau will make a winning selection from this offering. She is big-legged and big-haired with excellent shape to her rib and top. Her Totally Tuned dam always adds style, and this surely the case here. Find this one!

HALDERMAN FARMS



Show Steers for The Winners' Circle!

50**Steer calf**

Calved: April 1, 2010
 SIRE: **MONOPOLY**
 MGS: **WHO MADE WHO**
 HANES FAMILY

51**Steer calf**

Calved: February 1, 2010
 SIRE: **DIRTY HARRY**
 MGS: **HANNIBAL**
 GREEN OAK FARMS

Show and Cattle Equipment:

After the cattle auction will also sell a good selection of working show and cattle equipment like:

- Schafer Fans
- Misc. Mixed-Color Feed Pans (brand new)
- Aluminum grooming chute
- 25-30 gates and panels
- Feed wagon with auger
- More to be added sale day – look for details

Heir to the farm.



Nobody can predict what your children's future will be, but you have a big say in the where. Thousands of farm families admit they don't have an organized plan of succession, which could eventually make it difficult for their daughters and sons to inherit rightful ownership. That's why Pioneer supports the *Farm Journal* Legacy Project, a dedicated service that provides free resources to help families keep their farms in the hands of their children — and future generations beyond. To learn more, simply visit www.pioneer.com to find a local sales professional.



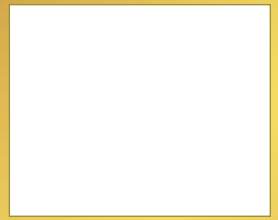
PIONEER
A DU PONT BUSINESS

*Science with Service
Delivering Success™*





Craig M. Reiter & Assoc.
P.O. Box 85
Elmore, Ohio U.S.A. 43416
www.primetimeagrimarketing.com



at Green Oak Farms

Friday, December 31 – 1 pm EST
At Green Oak Farms near New Paris, Ohio
Located along I-70 just east of the Indiana line

A New Year's Celebration of Winning Stock!