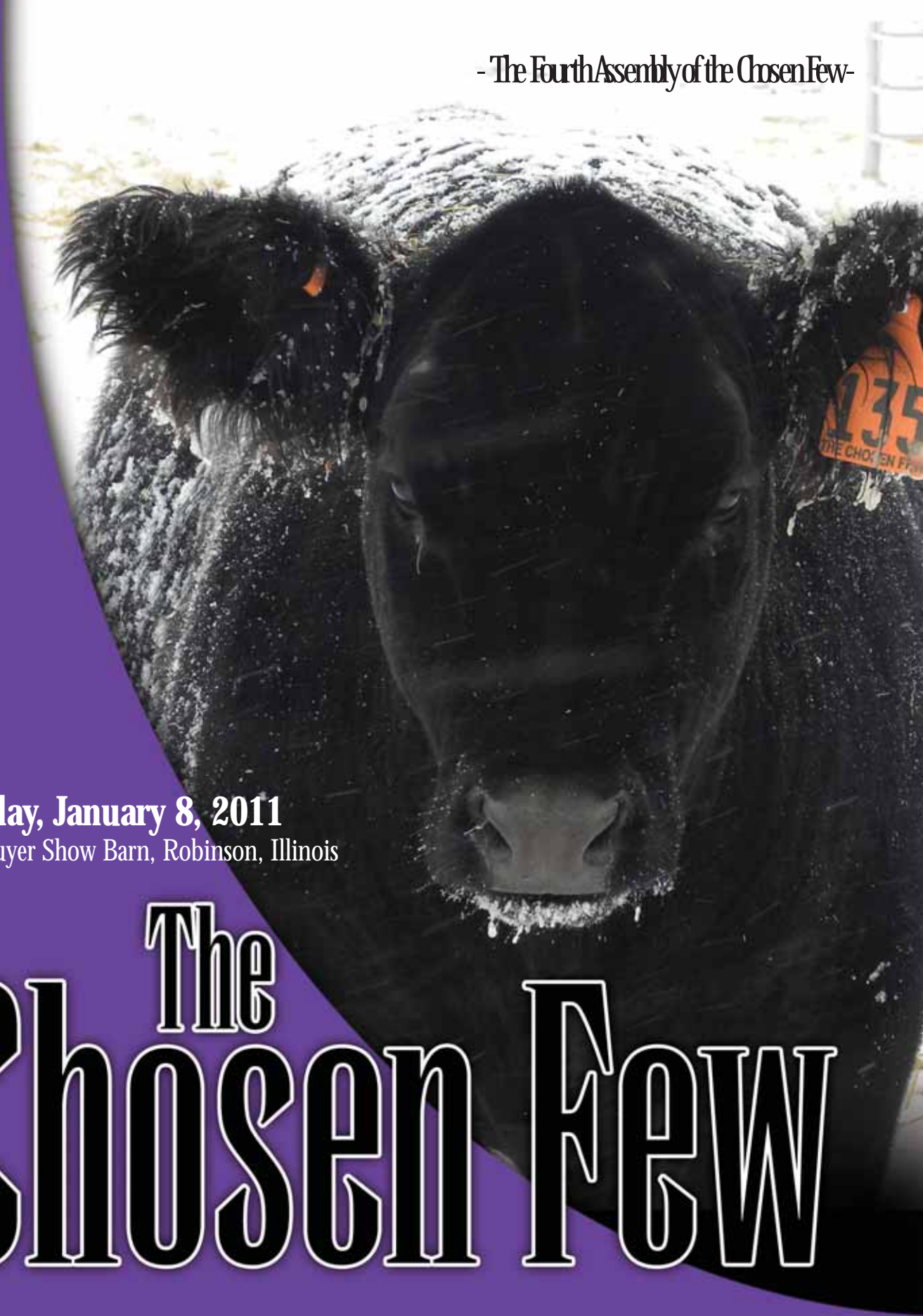


- The Fourth Assembly of the Chosen Few -

Saturday, January 8, 2011
at the Guyer Show Barn, Robinson, Illinois

The Chosen Few



Sale Day Contacts...

Sale Office, 618.546.5035
Dave Guyer, 812.243.1676
Kevin McKinzie, 618.554.1541

Ringman...

Delvin Heldermon, 405.205.1116
Craig Talkington, 785.623.1789
Scott Manley, 417.860.5250
Alan Sears, 970.396.7521
Mark Murphy, 937.459.7386

Auctioneer...

Steve Bonham IL@441001658

Sale Staff...

Chad Day, 260.388.2876
Brent Tolle, 502.905.7831
Humphrey Agri Marketing
Tyler Humphrey, 419.230.3450
Michael Stultz, 812.583.3243
Jeff Trennepohl, 765.620.0733
Dwyer Cattle Service,
Bob Dwyer, 309.337.1404
Tim Burke, 402.750.0440
Brad Hanewich, 812.593.0069
Joe Beckett, 606.782.1180

Sale Manager...



Craig M. Reiter

PrimeTIME AgriMarketing
NETWORK, Inc.
PO Box 85 • Elmore, Ohio USA 43416
419.862.0117 - office
419.350.9159 - mobile
419.862.0119 - facsimile
primetime@primetimeagrimarketing.com
www.primetimeagrimarketing.com

Insurance...

Jame Secondino, 765.832.2697
www.livestockins.com

Trucking...

Jason Reffitt, 859.585.4490

Join us for a great weekend of excitement!



Dave, Lucy, Ashtin and Nalaney Guyer
812.243.1676

Kevin, Christy, Conner, Collin
& Kyndall McKinzie
618.554.1541

Ron & Lisa Colburn
559.269.3175

office: 618.546.5035
guyercattleco@gmail.com
www.guyercattle.com

Schedule of Events...

Friday, January 7th -

"The Chosen Few" on display all day

6:00 pm Dinner & Pre-Sale Social Mixer at the Guyer Show Barn

Saturday, January 8th -

10:00 am Fitting and Grooming Clinic
Free to everyone - young and old invited.

12:00 Noon Product demonstrations from our sponsors
and lunch brought to you by Dennis Wilber

1:00 pm Guyer Cattle Company "The Chosen Few" Sale

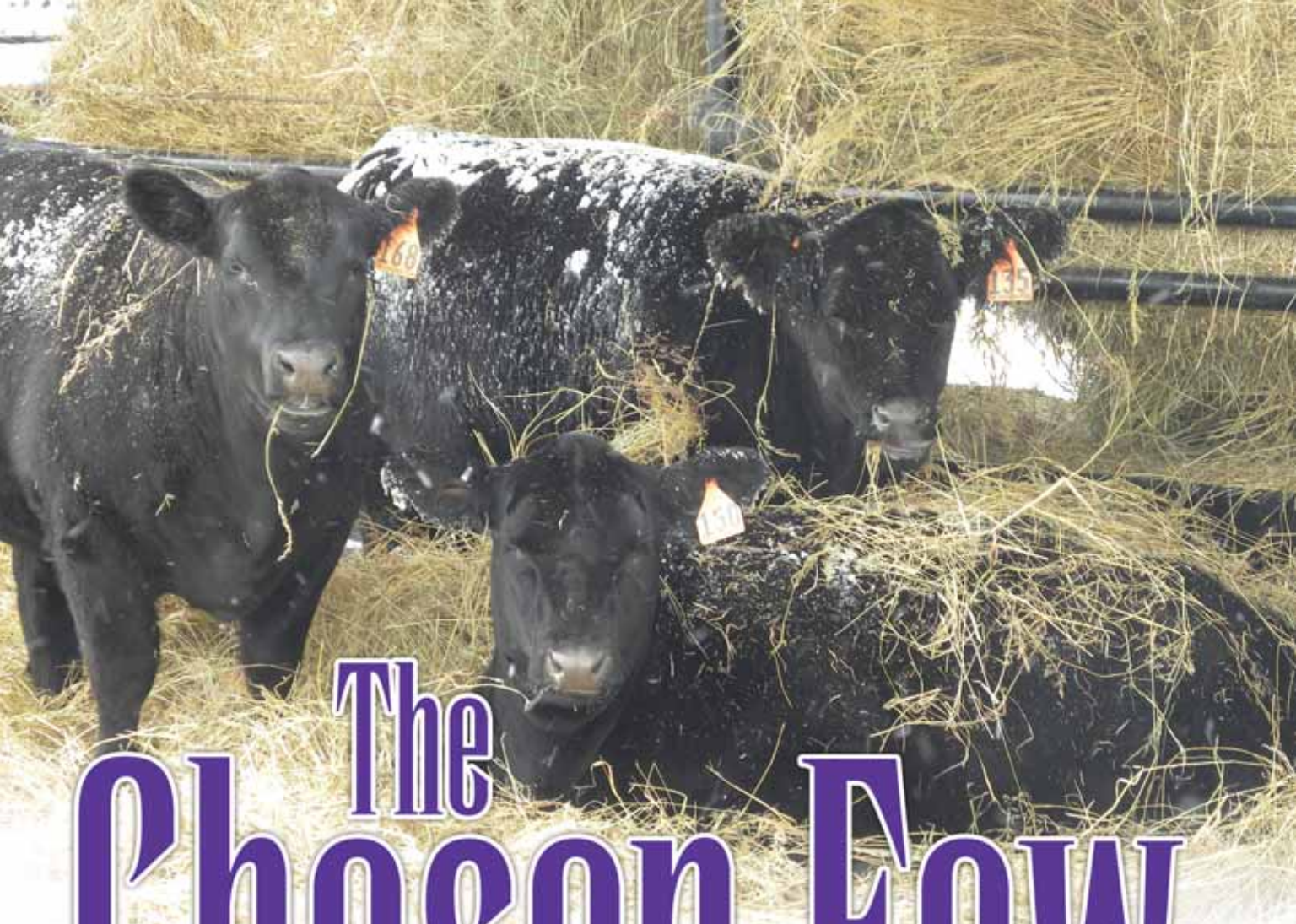
Nearby Lodging...

Best Western, Robinson, IL
618.544.8448

Also several hotels in Terre Haute, IN,
one hour Northeast & Vincennes, IN,
30 minutes Southeast.

Presented in part by our sale sponsors...





The Chosen Few

Saturday, January 8, 2011 • 1:00 PM CST
Guyer Show Barn, Robinson, Illinois

DIRECTIONS . . . From Jct. Rt 1 & 33 just East of Robinson, IL, go South on Rt 1 3.5 miles to Duncanville Rd.; West 2 miles to 1200; South to T; East to mailbox; and South back dead end lane to barn. *Physical address: 12251 E. 625th Ave.*

Welcome to Guyer Cattle Company...

Welcome Back to The Chosen Few!

We can't wait to host you in Robinson again for the best offering yet from The Chosen Few! This elite show cattle source continues to mature into one of the established and proven sources of the best females and genetics in the land. Stop in and compare for yourself; we think we've got the goods for 2011.

Dave Guyer has always searched high and low for the best cattle of all breeds and types and he always brought them to Illinois. Over the years the Guyer Cattle Company donor and herd sire batteries have developed to rival any in the nation and now the fruits of those labors are evident in this sale and those of our partners. For 2011, again Guyer Cattle Company will present the best females from our program and leading herds throughout the nation in this annual showcase of elite show stock. The results of past sales speaks for themselves - with winning donors and show heifers nationwide - and once you see this offering you'll be a believer as well.

New this year is our online "virtual" catalog. We did this in an effort to streamline the information process and provide you with latest photos and videos available on the cattle. We hope you like it and we invite you, as always, to view and bid on the cattle in person or to purchase from the comfort of your home through the services provided by Superior Livestock.

The best and the brightest will be up for bid in The Chosen Few 2011. Contact Dave, Kevin, myself or any member of the marketing team for more information and plan to attend this one-of-a-kind event!

Happy New Year!

Craig Reiter

Auction Manager

Welcome!

We would first of all like to welcome you to Guyer Cattle Company where we would like to thank you for taking the time to look at the offering at the fourth annual Chosen Few sale. Our goal here at GCC is to provide you a complete program. With the new edition of Colburn and McKinzie to the GCC team and many other new things on the horizon we feel that you too will be excited about the future.

We truly feel this is the best set of cattle, top to bottom, yet to date. Please take your time because if you are anything like we are, you will be changing your mind within this group.

Enjoy the day, the cattle, and the food. If there is anything we can do to help out in your success please don't hesitate to ask.

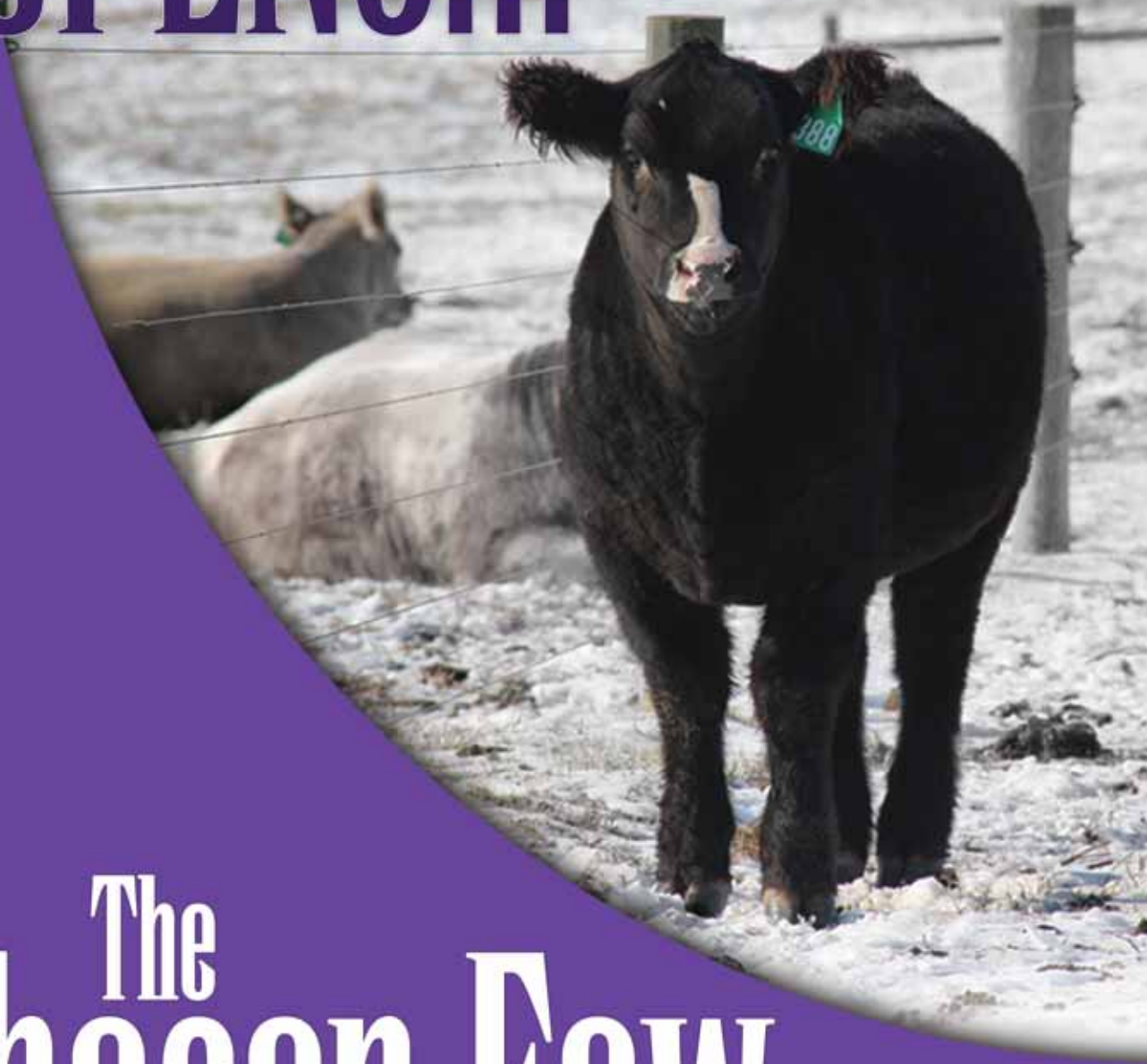
"True leader are not those who strive to be first but those who are first to strive and who give their all for the success of the team."

The GCC Team



GUYER
CATTLE COMPANY

OPENS...



The Chosen Few

- PAGE 5



IOF100 GCC Miss Heavenly Gift

Eligible Chianina Female • Calved: April 2010 • Sire: Unforgiven • Dam: Meyer 734

- As good as it gets and ready to roll! The judges are going to love the powerfully complete look of this young beauty that makes the short list of many visitors. She's got all of the tools you'll need; the rest is up to you.



IOF101 GCC Miss Game Girl

Eligible Chianina Female
Calved: March 2010
Sire: Monopoly • Dam: Angus

- More than enough power to handle the toughest tests, this massive heifer is the rare, young female that blends leading muscle with leading good looks and function. She is a favorite in the group due to her exciting profile, fault-free movement, and all that power that will push her to the front every time!

ICF102 GCC Miss Xtra Sweet

Open Female • Calved: February 2010
Sire: Dirty Hairy • Dam: Optimizer

• As long and clean as a show heifer needs to be, this heifer is super sound and attractive. Her maturity pattern is just right for summer and fall success and it will be hard to compete with her pattern.



ICF103 GCC Miss Joy

Eligible Chianina Open Female
Calved: February 2010
Sire: Monopoly • MGS: Kadabra

• Ready to go right away, this high-powered Monopoly daughter is extremely big boned and great haired. She is big and stout with problem-free movement and more than enough shape to get it done.

ICF104 GCC Miss Teneal

Open Female
Calved: April 2010
Sire: Milkman • MGS: Final Answer

• This smoky Milkman daughter is way different than you might expect and she just keeps getting better. She is easy to spot in the offering for more reasons than color alone, and she'll surprise you with her loose, free movement and soft cow shape plus great hair on a very classy design. Study this one awhile!

ICF105 GCC Miss Crystal

Eligible Chianina Open Female
Calved: April 2010 • Sire: Manchild • Dam: Angus

• Killer good looks! This Manchild daughter is younger but her pattern is spot-on with amazing hair and one of the prettiest head/shoulder/neck combinations that you'll find anywhere!





IOF106 GCC Miss Tezer

MaineTainer Open Female • Calved: April 2010
Sire: Monopoly • Dam: Mossy Oak x Maine-Anjou

- As cool as young ones get, this MaineTainer by Monopoly has as much potential as anything we'll offer. She packs a lot of shape and power on to a perfectly correct and balanced body with extra depth and a surprising choke of the neck. The smooth, no-miss movement on this one might be the best part but there is plenty to get excited about here. She alone is worth the trip!



IOF107 GCC Miss Ivy

Eligible Chianina Female
Calved: April 2010
Sire: Unforgiven • MGS: OCC Legend

- A whole lotta heifer with a whole lotta future, this Unforgiven daughter is a high-powered front runner in this deep set of future winners. She is big and ready to roll with eye-catching curves and totally free movement. She'll give them all they can handle right from the start!

ICF108 GCC Miss Meyer's Turn

Eligible Chianina Open Female • Calved: April 2010
Sire: My Turn • MGS: Meyer 734

• A young blaze-face with wild hair and a front end to match, this heifer is smooth and feminine throughout. She is bred just like plenty of recent winners and we wouldn't bet against her.



ICF109 GCC Miss Roxann

Open Female • Calved: April 2010
Sire: Solid Gold • Dam: Maine-Anjou x Angus

• Another young and special one, this heifer is from the first crop by Solid Gold – the clone to the 2008 Houston Livestock Show Grand Champion Steer and one of the most talked-about bulls in the industry. Check the wide, cool hip in this one blended with her perfectly arrogant front end. She is soft and sound with a versatile design and plenty of shag to go around!

ICF110 GCC Miss Hop Scotch

Eligible Chianina Open Female
Calved: March 2010
Sire: Powertrip • MGS: Who Made Who

• Wow, what a powerful cow prospect! This is one of those young females that you know will grow into something very valuable. We love the powerful top and hip shape in this fuzzball plus she is great on her feet and deeper than the national debt. She is the best one we saw by Powertrip and her dam is a knockout! Get in early!

ICF111 GCC Miss Better Than Never

50% Maine-Anjou Female • Calved: January 2010
Sire: Sooner • Dam: GDAR Russ (Angus)

• Valuable property from the most dominant sire of Maine-Anjou champions today, this Sooner half-blood has the longest, neatest front we've found on one with this pedigree. She is all class and feminine style with surprising size and style.





IOF112 GCC Miss Pretty in the Face

Eligible Chianina Open Female • Calved: April 2010
Sire: Monopoly • MGS: Meyer 734

- If you're searching for extra power and a female that can – and will – win right away, then be sure to mark this one in your catalog. The brockle-faced powerhouse is ready for the toughest tests and she can handle herself well with tremendous depth, balance, and ideal structure. She is built wide and correctly with flexible movement and plenty of muscle. Get ready to rock with this one!



IOF113 GCC Miss Cool Girl

Open Female
Calved: April 2010
Sire: Moderator • Dam: Dr. Who

- BIG haired, BIG legged, and BIG hipped, this is a super-sporty model that can handle some heavy action. You won't have any trouble finding this one as she might have the biggest four feet and legs in the set and she is one of the longest bodied as well. Pack an extra set of blades when you go to the show with this one!

IOF114 GCC Miss She's Rock Solid

50% Simmental Open Female • Calved: February 2010
Sire: Foundation • MGS: Legacy

• By the syndicated half-blood sire, Foundation, this heifer is all SimAngus cow power and more! You'll have a hard time finding one with any more body or muscle, plus she is sound and totally maternal. There is plenty of earning power bred in this special female!



IOF115 GCC Miss Kitty

Eligible Chianina Open Female
Calved: April 2010
Sire: Hollywood • MGS: Raptor

• A big-haired big-body that will yield plenty of strong returns, check the feet and impressive capacity of this standout Hollywood daughter. She is all power from every angle plus she is loose structured and very correct.

IOF116 GCC Miss Tweener

Open Female • Calved: April 2010
Sire: Leroy Brown • MGS: Fired Up

• Unreal shag and unmatched width make this exciting female the perfect choice for a winning market heifer. She's got the choke of the neck with a shocking caboose and she moves with power. Hard to find and hard to beat!

IOF117 GCC Miss Ginger

Open Female • Calved: April 2010
Sire: Primo (Cervesa x Angus) • MGS: Macho

• Backed by the high-selling bred heifer of our 2009 sale that was selected by Travis Miller, this heifer is sired by GCC Primo that is a Chosen Few graduate. Like her mother, this young heifer has powerful curves and explosive depth with a cool, correct build. Imagine her as a bred yearling!



Dam to Lot 117, the high selling bred heifer from the 2009 Sale.



IOF118 GCC Miss Girl Next Door

Eligible Chianina Open Female • Calved: April 2010
Sire: Smooth Sailing • Dam: Simmental

- Like her daddy's name implies, this is one smooth sailing, sweet looking show piece that we think can accomplish plenty. Her perfect blaze makes her easy to find but it's her cool body, softer leg, and gorgeous neck that really set her apart. There are plenty of tough decisions to be made in this set of opens and this one might be the toughest. Come early!



IOF119 GCC Miss Classie Chassey

Eligible Chianina Female
Calved: March 2010
Sire: Monopoly • Dam: Juneau x Draft Pick

- A great donor prospect by Monopoly, this is one huge legged, huge bodied, huge potential female. She offers so much power but she is still so sound and flexible plus she has grown well and has a massive, productive cow look about her. Show her right away and we'll expect to hear big things from this one as she matures.

IOF120 GCC Miss Twisted Sister

50% Simmental Open Female • Calved: March 2010
Sire: Macho • Dam: Angus

• Gorgeous cow power! This half-blood Simmental is big all over with great capacity and femininity. Her extra depth combines with a sweet, smooth front end and she moves great on a soft leg. You never go wrong with a female like this one!



IOF121 GCC Miss True Statement

Eligible Chianina Open Female
Calved: April 2010
Sire: Point Taken • Dam: Meyer 734 x Draft Pick

• Powerful stuff from a powerful dam, here is a versatile show prospect with a great foundation. She has sweet feet plus added degrees of width, bone, and wild hair.

IOF122 GCC Miss Ashley

Eligible Chianina Open Female
Calved: March 2010
Sire: Immortal • MGS: Meyer 734

• You won't be able to miss this one! She might have the most striking head, neck, and shoulder blend of anything in the sale. Plus, she is very feminine and soft in her makeup with a clean, smooth structure. Very eye catching!

IOF123 GCC Miss Charlie's Angel

Eligible Chianina Open Female
Calved: March 2010
Sire: Monopoly • Dam:

• This one, is as cool as possible! All the muscle, all the neck, all the body. They'll know you're there when you arrive with this one and she is ready to roll right now!





IOF124 GCC Miss Fall From Grace

Eligible Chianina Open Female • Calved: April 2010
Sire: Unforgiven • MGS: Lash (Cunia x Rambo's dam)

- A dazzling supermodel by Unforgiven, this high-potential female is built right from every angle. She has the tools to be a major-winning female with her wonderful balance and extension blended with a smooth, powerful design and great belly shape. Her feet and pasterns are perfect and she presents herself like a winner at all times. Study this one closely!



IOF125 GCC Miss Hollyberry

PB Shorthorn Female
Calved: April 2010
Sire: Salute • Dam: Myrtle Bo

- Sometimes one good Shorthorn is all it takes and this heifer will be a stout competitor as soon as you are ready to go. She is big and extended with great color and a wonderfully feminine design. Her dam descends from one of the most decorated families in the breed with more than one major winner to its credit, and this heifer will move right to the front of the class once she enters the ring.

LOT 126 GCC Miss GTO Upgrade

50% Simmental Open Female • Calved: April 2010
Sire: Upgrade • Dam: Heavens Angel (Who Made Who)

• The first daughter to be offered from the \$20,000 Heaven's Angel that was a top-seller of our 2008 sale to Tolle Show Cattle, KY, here is an exciting feature by the limited NLC Upgrade. Like her winning dam, this heifer offers tremendous length and balance with a flat shouldered, feminine and clean profile. Count on her to be a winner as well!



*Heavens Angel, dam of Lot 126
and was a high selling open
heifer in our 2008 Sale.*

LOT 127 GCC Miss Dream Girl

75% Simmental Open Female • Calved: March 2010
Sire: Dream Catcher • Dam: 50% Simmental

• One of two exceptional high-Simmental females in this offering, this Dream Catcher daughter is going to make a wonderful show heifer. She has added size and a sweet, complete form that will never let her down. Her perfect color markings are an added bonus and don't think they won't set her apart from the pack in the end. She doesn't need much help, though. Be sure to find this one!



LOT 128 GCC Miss Cold Chills

Eligible MaineTainer Open Female • Calved: March 2010
Sire: Shiver • MGS: Meyer 734

• Here is a sweet MaineTainer by Shiver that is as sound and feminine as they come. She is flat and cow-like all over with excellent depth of side and hair. A star on her head makes her easy to find, especially among the other low-Maine females.





IOF129 GCC Miss It's Happening

Eligible Chianina Open Female • Calved: April 2010
Sire: Monopoly • Dam: Doctor Who

- Come early because there are plenty of tough decisions to make in this set of Chosen Few open heifers and this special female is sure to make the short list of any showman who wants to play hardball. Backed by a fantastic daughter of Dr. Who, this heifer is super-stout and gorgeous with added mass and eye-catching balance. She is ready to win right away and there is no telling what she might do for you!



IOF130 GCC Miss Pink

Eligible Chianina Female
Calved: April 2010
Sire: Grizzly • Dam: Siimmental x Angus

- A star-faced great one by Grizzly, the wildly popular top-selling bull of our first Chosen Few, this heifer has all the equipment she needs to be a heavy hitter very soon. We've always loved her great joints and skeleton plus her long, sleek design but now she has added powerful muscle in just the right shape. If you weren't a believer before, this one will really show you what Grizzly can do!

IC131 GCC Miss Bridgett

Eligible Chianina Open Female • Calved: March 2010
Sire: Monopoly • Dam: Angus

• This Monopoly daughter is another big, strong show heifer that is ready to walk into the ring and make them all take notice. She has a notch extra frame size plus huge feet and awesome belly shape. Her great hair coat goes from nose to toes and she always makes you look twice!



IC132 GCC Miss On Target

50% Simmental Open Female • Calved: April 2010
Sire: Upgrade • MGS: Precision

• A sweet, stout one from the first crop by the syndicated breed-mover, NLC Upgrade! This half-blood Simmental heifer is predictably deep and wide with explosive rib and hip shape. Expect her to mature into something very valuable!



IC133 GCC Miss Arianna

Eligible Chianina Open Female • Calved: April 2010
Sire: Monopoly • MGS: Meyer 734

• Very powerful stuff! Here is a way-stout brockle-face by Monopoly with a ton of cow behind her! Study the massive belly and ideal feet on this one. She is a rare jewel!





IO134 GCC Miss Sparkle N Shine

Open Female • Calved: April 2010
Sire: Ali son • Dam: Crossbred Angus

- This one has all the right parts in all the right places and she is going to make a great senior yearling show heifer. She might need a little time yet as her first-calf dam gave her everything but extra milk. Check the smooth joints and front end, ideal depth, and full hip on this star-headed youngster that may be recorded as a MaineTainer if desired.



IO135 GCC Miss Candlelight

Eligible Chianina Female
Calved: April 2010
Sire: Grizzly • MGS: Monopoly

- Hot looks and a cool pedigree, here is a heifer you need to be sure to see before someone steals her away. She is a notch younger but she is rising through the ranks quickly due to her first-rate profile, ultra complete design, and generally eye-catching form. She'll be one to watch to sneak up on the competition a little later.



LOT 136 GCC Miss Eyes on the Prize

Maine-Anjou Open Female • Calved: March 2010
Sire: Boomer • Dam: Paddy O'Malley x Imprint

• It seems like a white-faced Maine-Anjou is hard to beat and this high-percentage female certainly fits the mold of our next major winner. She loads a killer profile with wonderful movement, extra size, and the perfect maturity pattern to give the competition all they want this spring and summer. We think you'll agree that high Maines like this one are hard to find and hard to ignore!



How to participate as an absentee buyer - We prefer for each of you to be in attendance on sale day. Realistically, we know there will be some scheduling conflicts and distance limitations. In these cases, we have arranged for you to be able to participate in the sale on an absentee basis.

If possible, you can come by and evaluate the cattle prior to sale day. If distance is a problem, we can also provide you with a DVD of all the cattle for home viewing. All of the lots in the sale will be available for viewing online prior to sale day at www.guyercattle.com, www.primetimeagrimarketing.com, www.superiorlive.com and www.superiorlivestock.com.

Here is how it works - Please call Superior Productions at 800-431-4452 and pre-register for your buyer's number. A registration form needs to be filled out and returned to Superior Productions with a signature on it. This registration form can be found by clicking on the "REGISTER FOR YOUR BUYER'S NUMBER" link online at www.superiorlive.com. The registration form can be printed, completed and either faxed or mailed in at the number or address provided on the form. Upon receipt of this information Superior will call you with a buyer's number and the bid line phone number that you will use on sale day to place bids over the phone.

The sale will be broadcast via satellite on RFD-TV - Dish Network channel 231 and DirecTV channel 345. Also, Superior Productions now offers the convenience of participating on sale day by following the auction on the internet at www.superiorlivestock.com and www.superiorlive.com. Simply go to either website and on the home page click on the link titled "To watch today's Auction - click here". Regardless of internet connection, you will be able to view and listen to the same video feed as seen on the satellite. The bidding process is the same - follow the auction on the internet and call the bid line number to place your bids. Your computer must have Flash Media Player installed to view the auction.

Bidders who are successful in making purchases via satellite or internet will be contacted by the ranch after the sale to settle payment and make shipping arrangements.



IOF137 GCC Miss Baby Got Back

Eligible Chianina Open Female • Calved: April 2010
Sire: Carnac • MGS: Doctor Who

- Major fuzz with the choke and plenty of back to back it up, this is a rare and wonderful market heifer prospect that is ready to win right now! She has all the width and dimension she needs on just the right frame score but what separates her from the pack is her great feet, joints, and total structure. We'll bet some of you have been looking for this one.



IOF138 APS Lady Prada 189

Reg. Angus Female • AAA# 16599547
Calved: December 10, 2009

Sire: Gambles Jaguar
Dam: Schurrtop Global x
Schurrtop R S 1413 2153

- Our next Angus Champion, Lady Prada 189 is a big and beautiful December heifer with a winning pedigree and plenty to enjoy. She is by Gambles Jaguar, the 2008 National Western Reserve Grand Champion and Dixie National Grand Champion Bull, and her dam stems from the same family that produced the \$200,000 MC 2500. This heifer is completely ready to roll with great lines and balance plus extra body and performance.

LOT 139 GCC Miss Noel

Eligible Open Female • Calved: March 2010
Sire: Q-Dog • MGS: Mr Success

• A Dog of a different color, this Q-Dog daughter is bigger and longer than you expect but she still has all the other good stuff you'll need. She has the signature depth of The Dog with his great hair, plus she is really sound and correct.



Important Sale Information

TERMS: Terms of sale are cash or good check made payable immediately after the sale and before any cattle are loaded. Invoiced (absentee) accounts are payable in full within 10 days of the sale or are subject to a 2% finance charge on the tenth day. A fee of \$50 will be assessed to all returned checks. **LIABILITY:** All animals and merchandise will be at the buyer's risk as soon as bid off but will be cared for by the seller(s) for a reasonable amount of time during and immediately following the sale. Neither the owners, auctioneers, sale manager or other affiliated personnel may be held responsible for any accidents that may occur. PrimeTIME AgriMarketing NETWORK, Inc. acts only as an agent between buyer and seller and may not be held responsible for any livestock or merchandise. It is to be clearly understood that PrimeTIME AgriMarketing NETWORK, Inc. and its representatives act only as a medium between buyer and seller, and may not be held liable, financially or otherwise, on any failure on the part of the same to fulfill any obligations set forth in this sale or for the truth of any warranties expressed or implied. Neither does PrimeTIME AgriMarketing NETWORK, Inc. assume any financial obligations to collect or enforce the collection of monies between buyer and seller. This catalog has been prepared by the sale manager from information provided by the seller(s) and is assumed accurate as presented to us. However, PrimeTIME AgriMarketing NETWORK, Inc. will in no way guarantee age, pedigree, or reproductive status of the animals selling. **BREEDING INFORMATION:** Please see the footnotes regarding

breeding information for each lot. All bred females will be examined for pregnancy by a qualified DVM prior to the sale and any changes to their breeding status will be made available sale day. Conception dates listed in this booklet are based on the results of said pregnancy examination and/or known breeding dates, and are intended as estimates of calving date only. **HEALTH:** All animals will be accompanied by a health paper valid for interstate shipment. Buyers should make themselves aware of their respective state's health requirements prior to the sale. **GUARANTEE:** Those cattle described herein as "checked safe" or "safe" are guaranteed bred and do not carry further guarantee. No guarantee, expressed or implied, is made as to an animal's ability to produce transferable embryos or frozen semen. All registered cattle sell with the standard guarantee endorsed by their respective breed association. All claims on bred females must be made in writing within 60 days of the sale date, and any adjustments made will be in the form of sale credit on future purchases. **INSURANCE:** Livestock insurance will be available at the clerk's desk through Great American Insurance. **TRUCKING:** If you require assistance in transporting your purchases, please contact the sale manager. Every effort will be made to minimize costs to the buyer. **ANNOUNCEMENTS:** Any announcements made from the sale block by the owner, auctioneer, or sale manager take precedence over any printed material. **SALE BOOKLET PREPARED BY:** Craig M. Reiter, Sale Manager. **SALE BOOKLET DESIGNED BY:** Designs by Arin



IOF140 GCC Miss Hot to Trott

Eligible Chianina Open Female • Calved: April 2010
Sire: Hairy • Dam: Meyer 734 x 9FB3

- As smooth and good as anything we'll offer, this heifer is a favorite of many for obvious reasons. For starters, the structure and movement here is spot-on and always has been. Second, she is as deep-sided and balanced as a great show heifer needs to be. Next, she continues to add power to her smooth, extended frame. Come see her, we think you'll love her like we do.



IOF141 GCC Miss Shooting Star

50% Simmental Female
Calved: March 2010
Sire: Momma's Boy
MGS: Meyer 734

- Two shots of Meyer 734 plus the great WAG Hairietta make this heifer a must-have without even looking at her. Her pedigree is all maternal gold and this heifer backs it up with her complete, correct, stylish design. Star-faced and very balanced, you can never go wrong with one like this.

IO142 GCC Miss Up Town Girl

Open Female • Calved: April 2010
Sire: Who's Bailout • Dam: Direct Hit x Habanero

• This one is as furry and deep as they come and she never misses her stride. She is smooth and complete and she'll be hard to ignore!



IO143 GCC Miss Sunshine

75% Simmental Open Female • Calved: March 2010
Sire: M Magic
Dam: Lazy H Burning Desire S121 (Dream On x Burn It Up)

• A gorgeous, high-potential Simmental female from our first embryo crop from Lazy H Burning Desire S121, the great Burn It Up daughter that we own with Lazy H Farm, OH, and Campbellco, OH. Sisters to this heifer have been popular winners so far - like one ring of the recent Heart Of It All Preview for the Reed family, OH - but this Mo Magic daughter might be the best of the lot. She offers fantastic power and width with great feet placement and - like her major-winning dam whose full brother was selected as the National Champion Bull in 2007 - a great head and neck carriage that makes her look like a winning show heifer. This family of Simmental cattle pays as well as any in the business.



*Lazy H Burning Desire S121,
dam of Lot 143.*

IO144 GCC Miss Goodnight

Eligible MaineTainer Open Female
Calved: April 2010
Sire: Ali • Dam: Who Made Who x Northern Improvement

• Here is the hard-to-find MaineTainer style of female that always wins in the end. This Ali daughter is the prettier, longer, more feminine variety and her maturity and design are just right to make her an excellent breeding heifer. She offers classic femininity with leading balance and problem-free movement.

IO145 GCC Miss Unforgettable

Open Female
Calved: April 2010
Sire: Unforgiven • Dam: Angus

• A younger heifer with fantastic length and depth of body. She is built like her sister that we sold to Taylor Tolle, KY, in the 2010 Chosen Few that eventually was selected as the Supreme Champion Female of the Kentucky State Fair. This one has the balanced, feminine look you need and she'll make a great spring and summer show prospect.

SHOW·RITE®

Show Feeds... Done Rite!

GREAT FAMILIES *Great Results*

NATURAL SOLUTIONS
FOR LIVESTOCK

HIDE AND HAIR

GLU COAT
BY NATURAL SOLUTIONS FOR LIVESTOCK

NATURAL STRIDE



CONGRATULATIONS CHAMBERLIN FAMILY
Grand Heifer Overall
2010 Hoosier Beef Congress



CONGRATULATIONS GILBERT FAMILY
Reserve MaineTainer Heifer
2010 North American



CONGRATULATIONS CHAMBERLIN FAMILY
Champion MaineTainer Heifer
2010 Hoosier Beef Congress



CONGRATULATIONS SIMMONS FAMILY
Reserve Commercial Heifer
2010 Hoosier Beef Congress

We are extremely excited to have Dave Guyer as a member of the ShowRite team and are looking forward to distributing Natural Solutions for Livestock through our dealer organization.

FOR INFORMATION:

TODD KENNEDY, 405-550-6769
RED GOODSON, 580-920-9788
RYAN SITES, 580-695-0429
KEVIN MOCK, 512-787-2948

DAVE GUYER, 812-243-1676
CHAD DAY, 260-388-2876
DENNIS WILBER, 209-482-6858
TY OLSON, 217-248-2767

WWW.SHOWRITE.COM
WWW.NATURALSOLUTIONSFORLIVESTOCK.COM



FIND US ON FACEBOOK
SEARCH SHOW-RITE



DONOR SOLUTIONS



- Donor housing & management
- Embryo recovery, freezing and implant services
- Semen and embryo storage and shipping services
- Located just minutes from I-65 in Rensselaer, Indiana
- Brand new facility with shaded, sandy lots to maximize cow comfort & production.

BRIAN HANNON
cell: 219.869.8030
brianrhannon@hotmail.com
8651 S. 380 W
Rensselaer, IN 47978

FROZEN...

The Core of the Program

Embryo and Pregnancy Opportunities From Our Best Females!

LOT 150 Produce of GCC Donor 203

50% Registered Simmental ASA# 2461321
Sire: Hotmail • Dam: PB Simmental



• The gorgeous Donor 203 - the dam of Grizzly - is one of the most valuable cows we own. The quality of her calves has been exceptionally consistent and strong, just like the Grizzly progeny. Her 2010 son by Upgrade was recently selected as the Reserve Grand Champion Bull of the 2010 American Royal from the calf division, and Grizzly has now sold in excess of 10,000 straws of semen with more excellent calf reports coming in all of the time. This chance to own what we know will be a very valuable full brother plus several maternal siblings has the profit and promotional value built and bred in!

• Donor 203 is owned with Larry Simmons Farms, OH, and will be on display sale day.

LOT 150A Bull Pregnancy

**Selling one confirmed Bull Pregnancy sired by Grizzly Bear.
Due to Calve March 19, 2011.**

• We have never had a bull calf out of this mating. This is the first full brother to Grizzly to date!

LOT 150B Three Embryos

Selling three embryos Sired by NLC Upgrade.

• At least one pregnancy is guaranteed when terms are followed. Available on sale day.

LOT 150C Three Embryos

Sired by Mo Magic.

• At least one pregnancy is guaranteed when terms are followed. Available on sale day.



Grizzly



Simmental Breed Leaders

Leading the Way and Building a Foundation for Success!

IO151

Produce of Matlock Miss S031 "Cinderella"

PB Simmental Cow ASA# 2370370

Sire: Dream On • Dam: Leighbert Miss M031

• A customer favorite for good reason, this \$48,000-valued top-seller of the first Chosen Few Sale is a proven power source that can create quick and easy success. Long admired for her uniquely powerful form, the first embryo crop from Cinderella arrived with a big bang this past spring. A daughter by SLC Sooner was a \$40,000 top-seller of the High Standards Female Sale for co-owner Jones Show Cattle, OH, and will be a female to watch this season. Her full brothers will be features of our spring bull sale as this female is delivering as promised.

• *Matlock Miss S031 is owned with Jones Show Cattle, OH; Larry Simmons Farms, OH; and Moore Land & Cattle, IL, will be on display sale day.*



Cinderella

This Cinderella daughter was the \$40,000 seller at the High Standards Female Sale.



IO151A

Pregnancy

Selling one confirmed, Unsexed Pregnancy by SVF Steel Force. Due to calve February 27, 2011.

IO152

Produce of Leighbert Miss M031

Simmental Cow ASA# 2153903

Sire: Black Bear • Dam: JSS Tiger

• Miss M031 is the dam of Cinderella, the \$48,000 valued Lot 1 female of our first Chosen Few Sale and the featured Lot 2 donor here. This favorite donor is really performing well with a recent daughter selling for \$7,800 in first Customer Appreciation Sale - produced from a past embryo sale - not to mention the great success of Cinderella's first ET crop. This pregnancy and embryo offering is sure-fire success with a full siblings to Cinderella.

• *Leighbert Miss M031 is owned with Jones Show Cattle, OH; Larry Simmons Farms, OH; and Moore Land & Cattle, IL, will be on display sale day.*

IO151B

Three Embryos

Selling three embryos sired by GWS Trademark.

• At least one pregnancy is guaranteed when terms are followed. Available on sale day.



Leighbert Miss M031

IO152A

Pregnancy

Selling one confirmed, Unsexed Pregnancy by CNS Dream On. Due to calve March 6, 2011.

IO152B

Three Embryos

Selling three embryos sired by CNS Dream On.

• At least one pregnancy is guaranteed when terms are followed. Available on sale day.



*SVF Sheza
Star S803*



SVF Sheza Star N902, dam of Lot 153

LOT153 Embryos of SVF Sheza Star S803

PB Simmental Cow ASA# 2387900

Sire: SVF/NJS Built Right • Dam: SVF Sheza Star N902

- The best Simmental genetics are available in this power-packed genetic offering and they certainly would not be complete without this special "Star". She is the \$54,000 top-seller of the 2009 sale at Sunset View Farms and she carries some of the best blood in the breed with a pedigree that traces to the \$144,000 valued SVF Sheza Star, Sheza Lady J900 and major champions such as JHS Sheza Dandy, WAR Nitro, Sheza Dandy Too, WAR Diva, CLO Shania, CLO Radiance, and the \$50,000 valued Lazy H Sheza Dandy T46. Plus, she is just flat good cattle. Sheza Star Produced enough value to pay for her \$54,000 cost in just 14 months. Her most recent sale was \$16,000 for half interest at Hudson Pines Production Sale.

- *Sheza Star S803 is owned with Keith Lambright, IN, Hudson Pines Farm, NY, and Tolle Show Cattle, KY*

LOT153A Three Embryos

Selling three embryos sired by EXAR Lutton.

- At least pregnancy is guaranteed when terms are followed. Available sale day.

LOT153B Three Embryos

Selling three embryos sired by CNS Pays to Dream.

- At least pregnancy is guaranteed when terms are followed. Available sale day.

IOF154 Embryos of Lazy H Burning Desire S 121

PB Simmental Cow ASA# 2382199

Sire: CNS Dream On • Dam: Triple C Burn It Up

• Pure power from the great Burn It Up N34L line! This is our first embryo offering from this great, young female that we selected along with Campbellco, OH, from the top of the winning program at Lazy H Farm, OH. She is the stoutest and most productive daughter of the foundation Burn It Up N34L donor whose progeny have created so much success throughout the breed. She was a major-winning show heifer in her day and a full brother was selected as the Grand Champion Bull of the 2007 American Royal. The first embryo calves from this massive donor averaged over \$7,000 at Lazy H this fall and we've got a powerful daughter that sells here as Lot 143. Also, a maternal sister to S121 sold one-half interest for \$24,000 as the Lot 1 feature of the 2010 Lazy H Game Day Sale. Grizzly should only add to this gem!

• *Lazy H Burning Desire S121 is owned with Campbellco, OH, and Lazy H Farm, OH.*



Lazy H Burning Desire S121

IOF154A Three Embryos

Selling three embryos sired by Grizzly.

• At least one pregnancy is guaranteed when terms are followed. Available on sale day.

IOF154B Three Embryos

Selling three embryos sired by Grizzly.

• At least one pregnancy is guaranteed when terms are followed. Available on sale day.

IOF155 Progeny from Donor 9T

PB Simmental Cow ASA# 2433602

Sire: S A V 004 Traveler 4836 • Dam: Country Dream R50

• New to the program, this is the first genetic offering from this fabulous half-blood female. A former top-seller of the Ohio Simmental Sale where her full sister was among the top-sellers last year, this unique beast is just what we want in a percentage donor. She has a unique pedigree - Gator x a very productive Mr MT daughter - with the classic, feminine power and design that we know will work with this and many other sires. Study the immense body and soft flank on this one plus her perfect leg, frame score, and rare bone/leg hair combination on a female with this pedigree. These Grizzly eggs will make chubby, hairy, white-faced delights!

• *Halls Country Gator 9T is owned with Siegrist Show Cattle, OH and will be on display sale day.*



Donor 9T

IOF155A Three Embryos

Selling three embryos sired by Grizzly.

• At least one pregnancy is guaranteed when terms are followed. Available on sale day.

IOF155B Three Embryos

Selling three embryos sired by Grizzly.

• At least one pregnancy is guaranteed when terms are followed. Available on sale day.

Genetic Power from the Core of GCC!!



Miss Daisy 130

A \$19,500, full brother to 156A & 156B, that sold for Adam Pryor.



IO156 Embryos of GCC Miss Daisy 130

Sire: Totally Tuned • MGS: Payback

• The small but mighty source of an incredible string of success, this eye-catching female keeps cranking them out with several steer calves over \$10,000 like her I Am Legend son that topped the 2010 Pryor Pasture Sale at \$19,500. That should be enough proof that you need to own these embryos but you might also consider that her maternal brother by 20/20 Vision was Fourth Overall Market Steer of the 2004 Ohio State Fair for the Harner family and that her natural sons include the Dr. Hook son that was a winner at the Purdue AGR Preview and another son by Express Male that was a multiple winner shown in Texas for Jordan Nalen. This little cow delivers with extreme power, every time.

• Miss Daisy 130 is owned with Larry Simmons Farms, OH.

IO156A Three Embryos

Selling three embryos sired by I Am Legend.

- At least pregnancy is guaranteed when terms are followed. Available sale day.

IO156B Three Embryos

Selling three embryos sired by I Am Legend.

- At least pregnancy is guaranteed when terms are followed. Available sale day.



GCC Donor 3369

IO157 Embryos of GCC Donor 3369

Sire: Who Made Who • Dam: Angus

• Let's just say she didn't make the cover of the 2010 Chosen Few catalog by chance! This one has it all; sound as you can make one, maternal, pretty to look at and double clean pedigree with the bone, hair and power of one you might expect from a double carrier. Her 2010 Q Dog is a stud, and when he hits the ring this year, we expect big things. We can only imagine that these eggs will be a golden ticket for their new owner.

IO157A Three Embryos

Selling three embryos sired by Heat Wave.

- At least pregnancy is guaranteed when terms are followed. Available sale day.

IO156B Three Embryos

Selling three embryos sired by Monopoly.

- At least pregnancy is guaranteed when terms are followed. Available sale day.

IO158 Embryos of GCC Donor 8113 —

Sire: Doctor Who • Dam: Angus

• A favorite from our 2010 Chosen Few, this Dr Who donor continues to impress us every day. She absolutely looks incredible - see her for yourself sale day - and we think it is just a matter of time until she delivers on a very high level. She sold one-half interest to top our sale a year ago and she still looks like she would do it again today with her phenomenal and rare power and design. Dr. Who daughters are catching fire in the business and we think this is his best daughter. These embryos by Dream On will create quick-selling percentage Simmental babies!

• Donor 8113 is owned with Maple Lane Farm, IN and will be on display sale day



GCC Donor 8113

IO158A Three Embryos —

Selling three embryos sired by CNS Dream On.

• At least one pregnancy is guaranteed when terms are followed. Available on sale day.

IO158B Three Embryos —

Selling three embryos sired by CNS Dream On.

• At least one pregnancy is guaranteed when terms are followed. Available on sale day.



GCC Fun!





GUYER
CATTLE COMPANY

DONORS & BRED HEIFERS...



IC159 GCC Donor 27

Open Donor Female • Calved: 2004 • Sire: Black Bear son • MGS: Who Made Who

• *Retaining the rights to one flush or 50% of two flushes.*

• A sale feature and a proven donor at GCC, this beautiful blaze is a stout one that needs to play for your team! You'll look a long time before you find one bred like her or with her great looks. Her first ET calves arrived this spring and we'll feature two of her sons this spring. We love the pattern, udder, and great legs this donor possesses not to mention the giant snow shoes she moves on. Cows like her are easy to use and we'll miss her!



IC160 VNAR Barbara 238A

Open Donor Female • Registered Angus AAA# 13840460
Calved: December 11, 2000

BAR EXT TRAVELER 205

N BAR EMULATION EXT
BAR QUEEN TRAVELER 3015
SAF FAME
AUCH BARBARA A553

VNAR AUCH BARBARA 318J

• Another proven treasure from our donor lineup, this registered Angus cow is the dam of the famous quartet of Gold Club daughters that averaged \$6,700 in our 2009 Chosen Few. She was a former top-seller of the Rowe Genetics program and she is still sound and productive in every way. One flush is all it takes with this one!

• Owned with A&M Cattle – Tarpon Springs, FL



*All full sibs out of
VNAR Barbara
238A, Lot 160*

*Sold in our 2009
Sale for \$6,750.*



*Sold in our 2009
Sale for \$6,000.*



*Sold in our 2009
Sale for \$7,000.*

IC161 BJ84

Bred Donor Female • Calved: 2006
Sire: Black Jack (Meyer 734)
Dam: Full Throttle

• **Bred to calve March 16 to Traction.**

• Bred to the full brother to Friction, this red-baldie cow is one to be sure to find. She is just hitting her prime years and she'll deliver with her cool size, choke front, and great hair.



*Sold in our 2009
Sale for \$5,500.*



IOF162 GCC Donor 30

Open Donor Female • Calved: 2005 • Sire: Grizz • MGS: Heat Seeker

- Sells open - Retaining 50% embryo interest.
- Extremely unique and extremely right for the times! This is one of the coolest cows we run and she is destined to hit it big. One look at this smaller, elephant legged, snake necked charmer and you'll be convinced. She has so much hair we could sell it separately and she is ready to roll - we just haven't gotten to her yet. We're dying to flush her to Who Da Man and we've got the semen which will throw in on this purchase. Trust us, this is one ride you need to take.

IOF163 LF Miss 95

Bred Female • Calved: 2004
Sire: Check's In The Mail • Dam: Angus

- **AI 5/21 to Grizzly; PE to Grizzly Bear 5/25-7/20. Safe.**
- These Check's daughters have become very popular cows - see the dam of the \$83,000 I Am Legend for starters. They add extra bone and stoutness and this one is no exception. This is a fuzzy, stout one in her prime producing years. She is a proven producer at Loudermilk's place and she is coming with some proven GCC genetics this time!

IOF164 GCC 5841

Open Donor Female • Calved: Spring 2005
Sire: Meyer 734 • MGS: Imprint



IO165 Miss Sunshine 166W

Registered Simmental Female ASA# 2519873 • Calved: March 3, 2009
Sire: SVF Star Power S802 • Dam: Imprint 1H x Akers Miss Lucy P082

• *Retaining the rights to one flush or 50% of two flushes.*

• **Bred to calve February 17 to BKRI Trendsetter.**

• The first of many young donors you have to choose from this in this best-ever set of bred females, this special Star Power daughter is a real beauty that is capable of doing whatever you want. Her photo tells the story of her great profile and wonderful balance and there is more shape and muscle here than you often find in a three-quarter Simmental. She will deliver one of the first spring calves by the \$150,000-valued BKRI Trendsetter, a half-blood Maine son of Northern Improvement. Dig in!

IO166 GCC 9419

Bred Female • Calved: Spring 2009
Sire: Grizz x Whiplash
Dam: Simmental x Angus

• **AI 5/17 to Total Solution; PE to Total Solution x Meyer 734 5/30 - 7/15. Check safe to AI; due 2/24.**

• Here is an easy-to-spot favorite in the bred heifer offering! This flashy heifer has a unique pedigree with plenty of pieces you need to succeed. Check this snake neck and then consider the stout bone and great hair!





IOF167 Freckles 924W

Registered ChiMaine Female ACA# 347275 • Calved: April 12, 2009
Sire: Heat Wave • Dam: Northern Improvement x Meyer 734

- *Retaining the rights to one flush or 50% of two flushes.*
- **Bred to calve January 31 to Grizzly.**

• Quite a female! The gorgeous curves and serious power are what you might expect to find on this unique Heat Wave daughter but check the perfect udder development, smooth joints, and soft flank for more proof of the power cow that this one will become. She is due early to Grizzly and you'll have time for a valuable flush or two before it's time to get this one back in calf. Really powerful and really good!



IOF168 HCC Carnival

Bred Female • Calved: March 2009
Sire: Carney Man (the Witch Doctor x Meyer 734)
Dam: Proven Queen (Angus)

• **AI 5/12 to Eye Candy; PE to DHF External Secret. Checked safe to AI; due 2/19.**

• The Carney Man females have proven themselves to be excellent club calf cows and this is a good one! The bottom side of this pedigree stems from one of the most productive Angus cow families in show business as evidenced by the winning track record of her mother that has been mainstay for Silvera Livestock of Sanger, CA. Safe to Eye Candy, this should work either way!



IC169 Lucy Rose 140U

Registered 5/8 Simmental Female ASA# 2525475 • Calved: March 1, 2008
Sire: Maximus 391 • Dam: Meyer Ranch 734 x B&D 707M

- *Retaining the rights to one flush or 50% of two flushes.*
- **AI 4/21 to Trendsetter; PE to Star Power. Safe.**

• Another outstanding donor option from this deep set of females, this registered Maximus daughter is super fancy and complete. She is double-bred to Meyer 734 with the flat, correct, angular design of a great, young cow plus tremendous body depth and great hair. Females like her are the reason her sire has lasted so long. If she makes her AI date it will be one of the first spring calves by the Sim-Solution Triple Crown Winner, Trendsetter!

IC170 HCC Jenny

Bred Female • Calved: April 2009
Sire: Echo
Dam: Simmental x Angus x H. Hereford

- **AI 5/12 to Yellow Jacket; PE to DHF External Secret. Checked safe to AI; due 2/19.**

• A super-smooth and correct red-baldie with the right look and genes to get the job done. The Echo daughters at Hannewich Cattle Company, IN, have proven themselves to out-produce themselves as they averaged \$7,500 on their first calves this fall. This one is safe to Yellow Jacket for a high-potential, colorful mating that will be the first of many profitable ones to come.





IO117 BNWZ Becky 478W

Bred Female • Registered 75% Maine Anjou AMA# 406110
Calved: April 7, 2009
Sire: SLC Sooner 101M
Dam: Fear This x Strictly Business/Blazer

• **AI 7/16 to DHF Jades Secret Agent; PE to DHF External Secret. Checked safe to AI; due 3/26.**

• The flush sister to one of the winningest show heifers from the 2010 show season for the Udell family, IA, this is a deep and proven Maine pedigree with a stout heifer to match. She has the blood and the build to be a donor someday and she is coming with a valuable half-blood Simmental baby by DHF Jades Secret Agent, the Dream On son of the great RF Black Jade whose full brother is the well-proven Jade s Dreamworks.

IO1172 HCC Cali

Bred Female • Calved: May 2009
Sire: Grizz
Dam: Heat Seeker x Full Flush x Meyer 734 x Cunia

• **AI 5/12 to DHF Jades Secret Agent; PE to DHF External Secret. Checked safe to AI; due 2/19.**

• This is quite a pedigree on an outstanding young female! This one's look, design, and shape is only complimented by her great hair quality plus she is bred for a valuable half-blood Simmental baby by DHF Jades Secret Agent, the Dream On son of the great RF Black Jade whose full brother is causing quite a stir with his first crop. The possibilities and mating options with this young female are endless.



IO1173 GCC 57

Bred Female • Calved: Spring 2009
Sire: Who Made Who • Dam: Maine-Anjou

• **AI 5/16 to Doc; PE to Total Solution x Meyer 734 5/30-7/15. Checked safe to AI; due 2/23**

• A big ended, cool necked Who Made Who daughter that you know how to use. She is clean boned and big enough to use with the bulls you like.

IO1174 GCC 90

Bred Female • Calved: Spring 2009
Sire: Hypnotic • Dam: Angus

• **PE to Total Solution x Meyer 734 5/30 - 7/15. Safe.**

• A favorite in the offering, this baldie has a lot of future. She has a very attractive design with a sleek front end, plenty of fuzz and she is really stout from the ground up.

IO175 STCC 33

Bred Female • Registered Charolais Female
Calved: September 29, 2008
Sire: SCC Borderline 32N ET
Dam: Maine Anjou x Simmental x Draft Pick

• **AI 5/01 to Carpe Diem; PE to Chuck Wagon 5/16-6/10. Safe**

• Extra muscle and a cool, show ring shape go along with this granddaughter of Wilson Cattle Company's great Charolais donor, Struttin'. This family has produced a string of winning cattle and this heifer will surely work - especially with Carpe Diem!



IO176 SPEN Norah 950

Bred Female • Registered Shorthorn Female ASA# 4158709
Calved: April 26, 2009
Sire: SULL Sinister 7082 ET
Dam: CF Trump X x LHS Oragne Girl 92X

• **PE to WHR Fort Worth 5/01 - 7/10. Safe.**

• Bred up from a winning and valuable Shorthorn cow family, this purebred former show heifer has the right look and size to make a versatile performer. She is sound and complete with more muscle than most.



IO177 STCC 37

Bred Female • Calved: September 17, 2008
Sire: Full Force x WAG Hairietta 9145J
Dam: Maine Anjou

• **AI 4/23 to Total Improvement; PE to Optimus Prime 5/07 - 6/14. Safe.**

• Sired by a powerful son of the \$1 Million producing WAG Hairietta whose full sister was a past Aksarben Supreme Champion Female, this older bred heifer is rock-solid good looks and style. She got a valuable shot of Who Made Who style from her amazing granddam plus extra muscle from her dam and extra maturity to get you started easily.

IO178 VCC Masle 2900

Bred Female • Calved: January 15, 2009
Sire: HVR Diamond Ct 204 (by RA Big Cat) • Dam: Angus

• **AI 5/13 to Duff Outer Limits; PE to LSF 6108 New Edition 5/19 - 8/01. Checked safe to AI; due 2/17.**

• This smoky bred heifer will make an easy-to-use breeding piece in club calf programs. She is an outcross to nearly anything you'll find and she is super sound and loose in her body and movement. She still has the hair and cool look you'll and she is extra gentle. Due early to Outer Limits!



IC179 STCC 36

Bred Female • Registered Charolais Female Pending
Calved: September 20, 2008
Sire: SCC Borderline 32N ET
Dam: Maine Anjou x Simmental x Angus

• **AI 5/12 to Carpe Diem; PE to Chuck Wagon 5/16-6/10. Safe.**

• A high-powered smoke with all the tools to make a top producer, this is another excellent daughter of SCC Borderline. Her paternal granddam is Wilson Cattle Company's great Charolais donor, Struttin', that has produced a string of winning cattle like the 2009 ACA National Champion Bull, WCC Gunsmoke. This heifer is big and stout and very correct; she'll work plenty of ways for better club calves.

IC180 STCC 150W

Bred Female • Calved: March 18, 2009
Sire: STCC Sinker (OCC Anchor x Vanity Fair)
Dam: STCC Lula 146P (MCS Power Trend)

• **AI 4/22 to Total Improvement. Checked safe to AI; due 1/30.**

• As deep and female-like as anything you'll find, here is an interesting breeding piece loaded with quality. Her sire is an impressive female-making son of the great Trennepohl donor, Vanity Fair, that was herself a Louisville champion and the best member of a deep and winning family of cattle that includes no less than 9 NAILE class winners. Udder quality, fleshing ability, muscle - this is a top female!



IC181 STCC 310W

Bred Female • Calved: March 20, 2009
Sire: Doctor Who
Dam: STCC 310 by Hardwood 209 son

• **AI 4/22 to Total Improvement. Checked safe to AI; due 2/05.**

• Young Dr. Who daughters like this make excellent producers, especially when they are out of stout, Sim-cross cows like the dam of this heifer. She is sound and feminine with leading hair and body shape and she'll milk with the best of them. Safe to one of the hottest bulls in Denver a year ago, Total Improvement!

IC182 GCC 903

Bred Female • Calved: March 2009
Sire: Doctor Who • Dam: Meyer 734 x Angus

• **AI 5/08 to Grizzly; PE to low birth weight Angus. Checked safe to AI; due 2/12.**

IO183 GCC 907

Bred Female • Calved: March 2009
Sire: RSVP • Dam: Angus (LB 148)

• AI 5/08 to Grizzly; PE to low birth weight Angus. Checked safe to AI; due 2/12.

IO185 GCC 214

Bred Female • Calved: Spring 2009
Sire: Kadabra
Dam: Angus

• AI 5/16 to Total Solution; PE to Total Solution x Meyer 734 5/30 - 7/15. Safe.

IO187 GCC 615

Bred Female • Calved: Spring 2009
Sire: Meyer 734 son
Dam: Angus

• AI 5/16 to Who Made Who; PE to Total Solution x Meyer 734 5/30 - 7/15. Checked safe to AI; due 2/23.

• Perfect depth and femininity, here is another versatile, profitable 734 granddaughter safe to Who!

IO189 GCC 613

Bred Female • Calved: Spring 2009
Sire: Meyer 734 son
Dam: Angus

• AI 5/16 to Who Made Who; PE to Total Solution x Meyer 734 5/30 - 7/15. Checked safe to AI; due 2/23.

• A baldie "power cow" in the making, this is another 734 granddaughter that is a favorite in this deep group of bred females. She has the fault-free maternal look that we know works well plus added thickness and width on an ideal frame score. Who Made Who is a great place to start here!

IO184 GCC 139

Bred Female • Calved: Spring 2009
Sire: Good Business • Dam: Simmental x Angus

• AI 5/28 to RSVP; PE to Total Solution x Meyer 734 5/30 - 7/15. Checked safe to AI; due 3/07.

• Tremendous muscle and length of body sell along with this Strictly Business granddaughter that is likely safe to RSVP!

IO186 GCC 376

Bred Female • Calved: Spring 2009
Sire: Meyer 734 son • MGS: Cunia

• AI 5/19 to New Solution; PE to Total Solution x Meyer 734 5/30 - 7/15. Checked safe to AI; due 2/26.

• Many storybook producers have started just like this one – same look, same pedigree. This Meyer 734 x Cunia blend is way stouter than most and she is just the right size with exceptional muscle shape. She'll make an easy-keeping profit-maker just like so many with this pedigree have before her. Find her!

IO188 GCC 617

Bred Female • Calved: Spring 2009
Sire: Meyer 734 son • Dam: Angus

• AI 5/19 to New Solution; PE to Total Solution x Meyer 734 5/30 - 7/15. Safe.



IC1190 GCC 622

Bred Female • Calved: Spring 2009
Sire: Meyer 734 son
Dam: Angus

• **AI 5/11 to Total Solution; PE to Total Solution x Meyer 734 5/30 - 7/15. Checked safe to AI; due 2/18.**

• Total Solution works great on cows like this one to add hair and style and she'll provide the milk and performance needed all the time.

IC1191 GCC 9229

Bred Female • Calved: Spring 2009
Sire: RSVP
Dam: Strictly Business

• **AI 5/18 to Carpe Diem; PE to Total Solution x Meyer 734 5/30 - 7/15. Checked safe to AI; due 2/25.**

• RSVP sires feminine style as well as any 734 son in the business and this star-headed daughter is a great example of the quality you get from his daughters. She covers all the bases with excellent structure, good feet and bone, and extra eye appeal. A little Business on the bottom side makes her more exciting and Carpe Diem should do the job as well!

IC1192 GCC 932

Bred Female • Calved: Spring 2009
Sire: RSVP son
Dam: Meyer 734 son x Angus

• **AI 5/08 to Grizzly; PE to lo w birth weight Angus bull. Safe.**

IC1193 STCC 12W

Bred Female • Registered Simmental Female ASA# 2514120
Calved: March 1, 2009
Sire: SAND Ranch Hand
Dam: STCC 12R (Angus)

• **AI 5/11 to Optimus Prime; PE to Optimus Prime 5/12 - 6/14. Safe.**

• The rare registered half-blood Simmental that can go either direction - club calf or purebred - with equal success, this Ranch Hand daughter is perfectly sized and very thick with good hair. She'll make a gorgeous cow and she is ready for a hot one right away with one of the first calves by the syndicated SOS son from the mega-high-selling KS She's So Sweet!



IC1194 GCC 920

Bred Female • Calved: Spring 2009
Sire: Meyer 734 son • Dam: Angus

• **AI 5/08 to Grizzly; PE to lo w birth weight Angus bull. Safe.**

IC195 STCC 152W

Bred Female • Registered Simmental Female ASA# 2514110
Calved: March 13, 2009
Sire: JH 9142S (Meyer Ranch 734)
Dam: STCC 152

- **PE to Optimus Prime 5/07 - 6/14; Safe.**
- Here is a thick and good-looking, registered quarter-blood bred for one of the first calves by the popular Optimus Prime. Her first calf will be a high-percentage Simmental by the syndicated son of Sandeen's SOS from the world's best Maximus daughter, KS She's So Sweet.

IC196 STCC 350

Bred Female • Calved: March 18, 2009
Sire: JH 005 • Dam: Miss Yardley N109

- **AI 5/11 to Optimus Prime; PE to Optimus Prime 5/12 - 6/14. Safe.**
- A very pretty, unregistered half-blood Simmental with a largely outcross pedigree. She has one of the best profiles in this set of bred heifers plus her first calf will be a high-percentage Simmental by the syndicated son of Sandeen's SOS from the world's best Maximus daughter, KS She's So Sweet.

IC197 GCC 9403

Bred Female • Calved: Spring 2009
Sire: 3C Macho
Dam: Angus

- **AI 5/10 to Total Solution; PE to Total Solution x Meyer 734 5/30 - 7/15. Checked safe to AI; due 2/17.**
- Another high-maternal, flexible Macho daughter with extra muscle and body shape. Total Solution should be an easy-calving, profitable first trip and she has the quality to make you much more!

IC198 GCC 101

Bred Female • Calved: Spring 2009
Sire: Simmental x Angus • Dam: Simmental x Angus

- **AI 5/18 to New Solution; PE to Total Solution x Meyer 734 5/30 - 7/15. Checked safe to AI; due 2/25.**
- Very stout and easy-to-use, this double-bred half-blood Simmental is an outcross to nearly anything you want to try. She is extra wide and easy doing and she is working on an excellent udder.

IC199 GCC 9402

Bred Female • Calved: Spring 2009
Sire: 3C Macho
Dam: Angus

- **AI 5/10 to Total Solution; PE to Total Solution x Meyer 734 5/30 - 7/15. Checked safe to AI; due 2/17.**
- Beautiful Macho daughters like this one are good property, it's well-proven. This is a big, sound, deep, baldie that is working on a gorgeous udder. She'll be quite a sight with her Total Solution on her side!



IOF 200 GCC 201

Bred Female • Calved: Spring 2009
Sire: Simmental x Angus
Dam: Simmental x Angus

• **AI 5/18 to Who Made Who; PE to Total Solution x Meyer 734 5/30 - 7/15. Checked safe to AI; due 2/25.**

• This baldie half-blood Simmental is real stout and out on the corners with extra depth and thickness. She'll make a whale of a cow and we love this mating to Who Made Who to give her an extra shot of hair and style. Should work well!



IOF 201 GCC 103

Bred Female • Calved: Spring 2009
Sire: Simmental x Angus
Dam: Simmental x Angus

• **AI 5/19 to Who Made Who; PE to Total Solution x Meyer 734 5/30 - 7/15. Checked safe to AI; due 2/26.**

• A big, deep baldie with a totally feminine look and build; she is the right match with Who Made Who! This has worked before many times!

IOF 202 GCC 118

Bred Female • Calved: Spring 2009
Sire: Simmental x Angus
Dam: Simmental x Angus

• **AI 5/12 to Step Aside; PE to Total Solution x Meyer 734 5/30 - 7/15. Checked safe to AI; due 2/19.**

• Another good-looking, double-half Simmental that should make an ideal cow. This one is extra deep and angular and every bit the cow. Check the udder she is making for this February delivery.

IOF 203 GCC 120

Bred Female • Calved: Spring 2009
Sire: Simmental x Angus
Dam: Simmental x Angus

• **AI 5/19 to Step Aside; PE to Total Solution x Meyer 734 5/30 - 7/15. Checked safe to AI; due 2/26.**

• These double half-blood Simmental will make versatile, easy-to-use cows that should match up nicely with the bulls you like. This is another deep, sound, useful cow with enough size and look to work well.

IOF 204 GCC 9415

Bred Female • Calved: Spring 2009
Sire: Paddy O'Malley • Dam: Angus (050)

• **PE to Total Solution x Meyer 734 5/30 - 7/15. Safe.**

• Extra bone, extra fuzz, extra power! Buy this Paddy daughter young and then take her to a power bull for some real fun. Cows like this one create extreme prospects when you hook them up right!

LOT 205 GCC 9424

Bred Female • Calved: Spring 2009
Sire: Total Solution
Dam: Maine-Anjou x Angus

• AI 5/14 to Total Recall; PE to Total Solution x Meyer 734 5/30 - 7/15. Checked safe to AI; due 2/21.

• A smaller package but she is built right and good to go! We love the extra depth and thickness of this heifer plus she has the slick front end we like and she is built wide on good feet and joints. Safe to Total Recall, a OCC Missing Link son, a popular calving ease bull.



LOT 206 GCC 9430

Bred Female • Calved: Spring 2009
Sire: Grizzly • Dam: Simmental x Angus

• AI 5/12 to Total Solution; PE to Total Solution x Meyer 734 5/30 - 7/15. Checked safe to AI; due 2/19.

• This impressive brockle-faced heifer is a good example of the strong quality we're getting from the popular top-selling bull of our first Chosen Few Sale. She is big and rugged but still very attractive and versatile. You can mate females like this one to plenty of popular sires and expect success!



IOI 207 GCC 9433

Bred Female • Calved: Spring 2009
Sire: Crimson Tide
MGS: Full Throttle

• **AI 5/18 to Carpe Diem; PE to Total Solution x Meyer 734 5/30 - 7/15. Checked safe to AI; due 2/25.**

• A sweet redhead! This one is extra stout and cool with enormous bone. Her extra hair - and there is plenty to go around - and trunk legs will be just the ticket for Carpe Diem and many others. This should be colorful and good!



IOI 208 GCC 2-0

Bred Female • Calved: Spring 2009
Sire: Monopoly • MGS: Meyer 734

• **AI 5/20 to New Solution; PE to Total Solution x Meyer 734 5/30 - 7/15. Checked safe to AI; due 2/27.**

• A goose-necked Monopoly daughter from a heavy-milking Meyer 734 daughter, this one should make a top female as well. She's got the look with added shape. We like the kind!



IOI 209 GCC 1-0

Bred Female • Calved: Spring 2009
Sire: Heat Wave
MGS: Meyer 734

• **PE to Total Solution x Meyer 734 5/30 - 7/15. Safe.**

• Plenty of paint and plenty of depth set this one apart from the others. She makes the cut for The Chosen few due to her extra mass, sound movement, and leading fleshing ability.

LOT 210 GCC 459W

Bred Female • Calved: Spring 2009
Sire: Heat Wave
MGS: Chill Factor

- **AI 5/08 to Grizzly; PE to low birth weight Angus. Checked safe to AI; due 2/12.**
- Huge bone and plenty of milk from a strong Chill Factor dam, this Heat Wave will work - especially with Grizzly!



High selling open heifer in last years Chosen Few at \$18,000 and full sib to Lot 210.



High selling heifer in Vanhove's 2010 heifer sale for \$8,500 and full sib to Lot 210.

LOT 211 GCC 015

Bred Female • Calved: Spring 2009
Sire: Heat Wave
MGS: Carney Man

- **AI 4/27 to Northern Improvement. Checked safe to AI; due 2/01.**
- This is a classy Heat Wave daughter with extra depth of body. She is wide-sprung and great haired as well. Safe to Northern Improvement, her first calf will be bred just like the \$25,500 donor that Travis Miller, IL, purchased in the first Chosen Few.



Champion Steer 2010 Western Bonanza and full brother to Lot 211.



Grand steer at the 2010 VCCP Winter Classic and full brother to Lot 211.



ICF 212 GCC MS 169

Bred Female • Calved: Spring 2008 • Sire: Heat Wave • MGS: Angus

• **Safe to T031 (Dream On x Angus). Est. due 4/28.**

• A very stout show heifer that was a winner in Mississippi, this older bred heifer is very sound and large boned with extra muscle. She's got the look you need with extra maturity to get her started with ease.



How to participate as an absentee buyer - We prefer for each of you to be in attendance on sale day. Realistically, we know there will be some scheduling conflicts and distance limitations. In these cases, we have arranged for you to be able to participate in the sale on an absentee basis.

If possible, you can come by and evaluate the cattle prior to sale day. If distance is a problem, we can also provide you with a DVD of all the cattle for home viewing. All of the lots in the sale will be available for viewing online prior to sale day at www.guyercattle.com, www.primetimeagrimarketing.com, www.superiorlive.com and www.superiorlivestock.com.

Here is how it works - Please call Superior Productions at 800-431-4452 and pre-register for your buyer's number. A registration form needs to be filled out and returned to Superior Productions with a signature on it. This registration form can be found by clicking on the "REGISTER FOR YOUR BUYER'S NUMBER" link online at www.superiorlive.com. The registration form can be printed, completed and either faxed or mailed in at the number or address provided on the form. Upon receipt of this information Superior will call you with a buyer's number and the bid line phone number that you will use on sale day to place bids over the phone.

The sale will be broadcast via satellite on RFD-TV - Dish Network channel 231 and DirecTV channel 345. Also, Superior Productions now offers the convenience of participating on sale day by following the auction on the internet at www.superiorlivestock.com and www.superiorlive.com. Simply go to either website and on the home page click on the link titled "To watch today's Auction - click here". Regardless of internet connection, you will be able to view and listen to the same video feed as seen on the satellite. The bidding process is the same - follow the auction on the internet and call the bid line number to place your bids. Your computer must have Flash Media Player installed to view the auction.

Bidders who are successful in making purchases via satellite or internet will be contacted by the ranch after the sale to settle payment and make shipping arrangements.

ICF23 GCC 9416

Bred Female • Calved: Spring 2009
Sire: Heat Wave
MGS: Who Made Who

• **AI 5/14 to OCC Legend; PE to Total Solution x Meyer 734 5/30 - 7/15. Checked safe to AI; due 2/21.**

• The right style of Heat Wave to try, this one is smoother, looser and more feminine but she is still just as stout as she needs to be. You'll be pleasantly surprised what you get from the proven easy-calving OCC Legend on a cow like this one will be.



ICF24 GCC 922

Bred Female • Calved: Spring 2009
Sire: Heat Wave
Dam: Fullback Angus

• **AI 5/08 to Grizzly; PE to low birth weight Angus bull. Safe.**
• A longer, cleaner Heat Wave with major fuzz and extreme bone!

ICF25 GCC 9422

Bred Female • Calved: Spring 2009
Sire: Unforgiven
Dam: Who Made Who

• **AI 5/16 to OCC Legend; PE to Total Solution x Meyer 734 5/30 - 7/15. Checked safe to AI; due 2/23.**

• The Colonel will love this one and we'll bet you will too! She's got the choke of the neck with extreme hair and sex appeal but she is still very correct and mobile. OCC Legend has proven himself to be a great match with cows like this one and a bull like Yellow Jacket might be next!

ICF26 GCC 2507

Bred Female • Calved: Spring 2009
Sire: Unforgiven
Dam: Simmental x Angus

• **AI 5/19 to New Solution; PE to Total Solution x Meyer 734 5/30 - 7/15. Safe.**

• You can't go wrong with young replacements built like this one! She is young but she has the perfect club calf shape with a softer leg, excellent feet, great hair, and you can't take your eyes off her. She'll create some real enjoyment in time!



LOT 217 GCC 3259

Bred Female • Calved: Spring 2009
Sire: Hollywood
Dam: Who Made Who x Simmental

- **AI 5/16 to RSVP; PE to Total Solution x Meyer 734 5/30 - 7/15. Checked safe to AI; due 2/23.**
- A special Hollywood daughter with all the flash you'll ever need! This heifer is a leader in the pack in terms of style, balance, and valuable hair that grows from every inch of her body. Her young sisters are making excellent cows so far and we'll bet this one will be a favorite as she matures. Very intriguing!

Angus Bred Heifers



LOT 218A GCC 915

Angus Bred Female • Calved: Spring 2009
Sire: BC Marathon
Dam: Elba 3307 (SVF Russ)

- **AI 5/08 to Grizzly; PE to low birth weight Angus bull. Checked safe to AI; due 2/12.**
- The first of two full sisters from the highly-productive Elba 3307 donor, this Marathon daughter is very correct and every bit the ideal Angus cow prospect.



LOT 218B GCC 930

Angus Bred Female • Calved: Spring 2009
Sire: BC Marathon
Dam: Elba 3307 (SVF Russ)

- **AI 5/08 to Grizzly; PE to low birth weight Angus bull. Checked safe to AI; due 2/12.**
- Just like her impressive full sister, this Elba 3307 daughter is bred to be efficient and great looking. Grizzly is a lock with this pair! A maternal sister is Lot 218C.

ICF218 GCC 9416

Angus Bred Female • Calved: Spring 2009
Sire: Duff New Edition
Dam: Elba 3307 (SVF Russ)

• **AI 5/08 to Grizzly; PE to low birth weight Angus bull. Safe.**

• More good looks from the top-producing Elba 3307! This is a wide body with the right look. She'll mature into a great looking, money maker!



ICF219 LSF Blossom 835

Bred Female • Registered Angus Female AAA# 16315515
Calved: November 2, 2008
Sire: SAV Bismarck 5682
Dam: SAF 598 Bando 5175 x Champion Hill Blossom 1077

• **AI 5/08 to Duff Outer Limits; PE to LSF New Edition 4 5/20-8/01. Checked safe to AI; due 2/15.**

• Here is a very good, registered Angus heifer with a stout and proven pedigree based around SAV Bismarck and the winning Champion Hill Blossom family. This heifer is big and complete with excellent balance and good looks plus she is due for a pure-bred baby by the easy-calving Outer Limits!

ICF220 LSF Dora 832

Bred Female • Registered Angus Female
Calved: July 10, 2008
Sire: SAV New Worth
Dam: Schoenes Fix It 826 x Bon View Dora 1930

- **PE to LSF 6108 New Edition 5/19-8/01. Est. due 5/13.**
- These Net Worth daughters are massive, powerful Angus cows. This one is extra wide and easy-keeping!

ICF221A LSF Emblynette 900

Angus Bred Female • Registered Angus Female
Calved: January 1, 2009
Sire: SAV 004 Traveler 004
Dam: SAV 598 Bando 5175 x Emblynette 7319

• **PE to LSF 6108 New Edition 5/19-8/01. Est. due 4/01.**

• The first of two valuable 004 daughters from the famed and productive SAV Emblynette family, this is a powerful pasture whale that can really do some good. She is a huge bodied, easy keeper with a great disposition.

ICF221B LSF Emblynette 831

Angus Bred Female • Registered Angus Female
Calved: October 20, 2008
Sire: SAV 004 Traveler 004
Dam: SAV 598 Bando 5175 x Emblynette 7319

• **PE to LSF 6108 New Edition 5/19-8/01. Est. due 4/01.**

• A valuable 004 daughter from the SAV Emblynette family, this Angus heifer is as soggy as you can make one. She is huge bodied, big backed and would work great in Angus or Sim-cross programs. Her full sister sells also.



ICF 222 LSF 931

Bred Female • Calved: March 1, 2009
Sire: SAV 5175 Bando 4597
Dam: Angus

- PE to LSF 6108 New Edition 5/19-8/01. Est. due 4/01.
- This female is ideal when it comes to femininity and style.

ICF 224 LSF Blossom 834

Bred Female • Registered Angus Female AAA# 16315514
Calved: November 1, 2008
Sire: SAV Bismarck 5682
Dam: SAF 598 Bando 5175 x Champion Hill Blossom 1077

- PE to LSF New Edition 4 5/20-8/01. Est. due 3/11.
- A full sister to Lot ??, this heifer has the ideal depth and build to make a strong producer.

ICF 223 LSF 930

Bred Female • Calved: March 12, 2009
Sire: SAV 5175 Bando 4597
Dam: Angus

- PE to LSF 6108 New Edition 5/19-8/01. Est. due 3/13.
- Very deep with great Angus hair!

ICF 225 LSF Skymere 904

Bred Female • Registered Angus Female AAA# 16527372
Calved: February 22, 2009
Sire: SAV Net Worth 4200
Dam: QAS Traveler 23-4 x Mengs Skymere 19S

- PE to LSF New Edition 4 5/20-8/01. Est. due 4/01.
- A very stout Net Worth daughter from the top-producing Skymere family!

ICF 226 LSF Lady 909

Bred Female • Registered Angus Female AAA# 16527375
Calved: February 28, 2009
Sire: SAV Net Worth 4200
Dam: BCC Bushwacker 41-93 x Champion Hill Ext Lady 1124

- PE to LSF New Edition 4 5/20-8/01. Est. due 3/13.
- Extra performance, fleshing ability and good looks from Net Worth and the famous Champion Hill Lady tribe that produces as many Angus champions as any in the breed!

ICF 227 LSF Lady 910

Bred Female • Registered Angus Female AAA# 16527376
Calved: March 4, 2009
Sire: SAV Net Worth 4200
Dam: BCC Bushwacker 41-93 x SAV Errolline 6039

- PE to LSF New Edition 4 5/20-8/01. Est. due 3/01.
- Check the extra body and correct design of this well-bred female from Schaff's great Errolline family!



ICF 228 LSF 78R

Bred Female
Calved: March 2009
Sire: LSF Traveler 5333
Dam: Comm Angus

- PE to LSF New Edition 4 5/20-8/01. Est. due 3/01.

ICF 229 LSF 936

Bred Female
Calved: March 2009
Sire: LSF Paradise 5058
Dam: Commercial Angus

- PE to LSF New Edition 4 5/20-8/01. Est. due 4/01.

ICF 230 LSF Blossom 833

Bred Female • Registered Angus Female AAA# 16527372
Calved: November 1, 2008
Sire: SAV Bismarck 5682
Dam: SAF 598 Bando 5175 x Champion Hill Blossom 1077

- PE to LSF New Edition 4 5/20-8/01. Est. due 3/01.
- Show heifer good looks with body and size to be a top female!



ICF 231 LSF 20R

Bred Female • Calved: March 2009
Sire: LSF Paradise 5058
Dam: Commercial Angus

- PE to LSF New Edition 4 5/20-8/01. Est. due 4/30.

ICF 232 LSF 33R

Bred Female • Calved: March 2009
Sire: LSF Paradise 5058
Dam: Commercial Angus

- PE to LSF New Edition 4 5/20-8/01. Est. due 4/01.

ICF 233 LSF 62R

Bred Female • Calved: March 2009
Sire: Rocky Balboa
Dam: Shorthorn cross

- PE to LSF New Edition 4 5/20-8/01. Est. due 3/01.

eZall v.s. The Competition



- All natural ingredients
- Spray on, rinse off in 5 minutes or less
- No buckets, sponges or scrubbing
- 2009 Horse Journal best sprayer
- 100% guaranteed

Harsh chemicals
Messy and time consuming
Wet clothing
Multiple products needed
Expensive



No Contest!

It's Safe. It's Easy. It Works. And it's Green!

www.ezall.com



Trendsetter

SIRE: Trademark

DAM: Vortec X 6807

Owned with Tolle, Sinclair, Combs, Schubert & Parke

*** THE, PHAE, AME, NHF!**



Mo Magic

SIRE: Mo Better

DAM: Akers Ruby (Angus)

Owned with Pembroke, Daniels, Phillips, Shoal Creek & Tuell

*** THE, PHAE, AME, NHF!**



GUYER SIREs

We will be offering
Sale Day Discounts
on all the bulls.



I Am Legend

SIRE: Heat Wave X

Checks in the Mail

Owned with Bonham, Lautner & Caldwell

*** THC & PHA Free**



Radioactive

SIRE: X-Ray Vision

DAM: Mary Kaye (Boxer)

Owned with D&O, LLC

*** TH Free!**



SUL-GNCC Asset

SIRE: Solution

DAM: Mona Lisa 35L

Owned with Lawrence Cattle Co. & Waldock Bros.

*** TH Free!**



CCC Grizzly

50% Reg. Simmental

SIRE: Grizzly Bear

DAM: Hotmail/Simmy

Owned with Jason Johns, GA

*** THE, PHAE, AME & NHF!**



CCC Black Label

SIRE: Irish Whiskey

DAM: Wents Supermom

Owned with Diamond L Ranch

*** TH Free & PHAC**



Q Dog

SIRE: Heat Wave

DAM: Cub/Cunia

Owned with Quimby Show Calves

*** THC & PHA Free**



Saturday, January 8, 2011
at the Guyer Show Barn, Robinson, Illinois

A close-up photograph of a dark-colored horse's head, showing its eyes and ears. A bright green ear tag is attached to the right ear, featuring the white number 356. The background is a blurred outdoor setting, likely a show barn.

356

The
Chosen Few